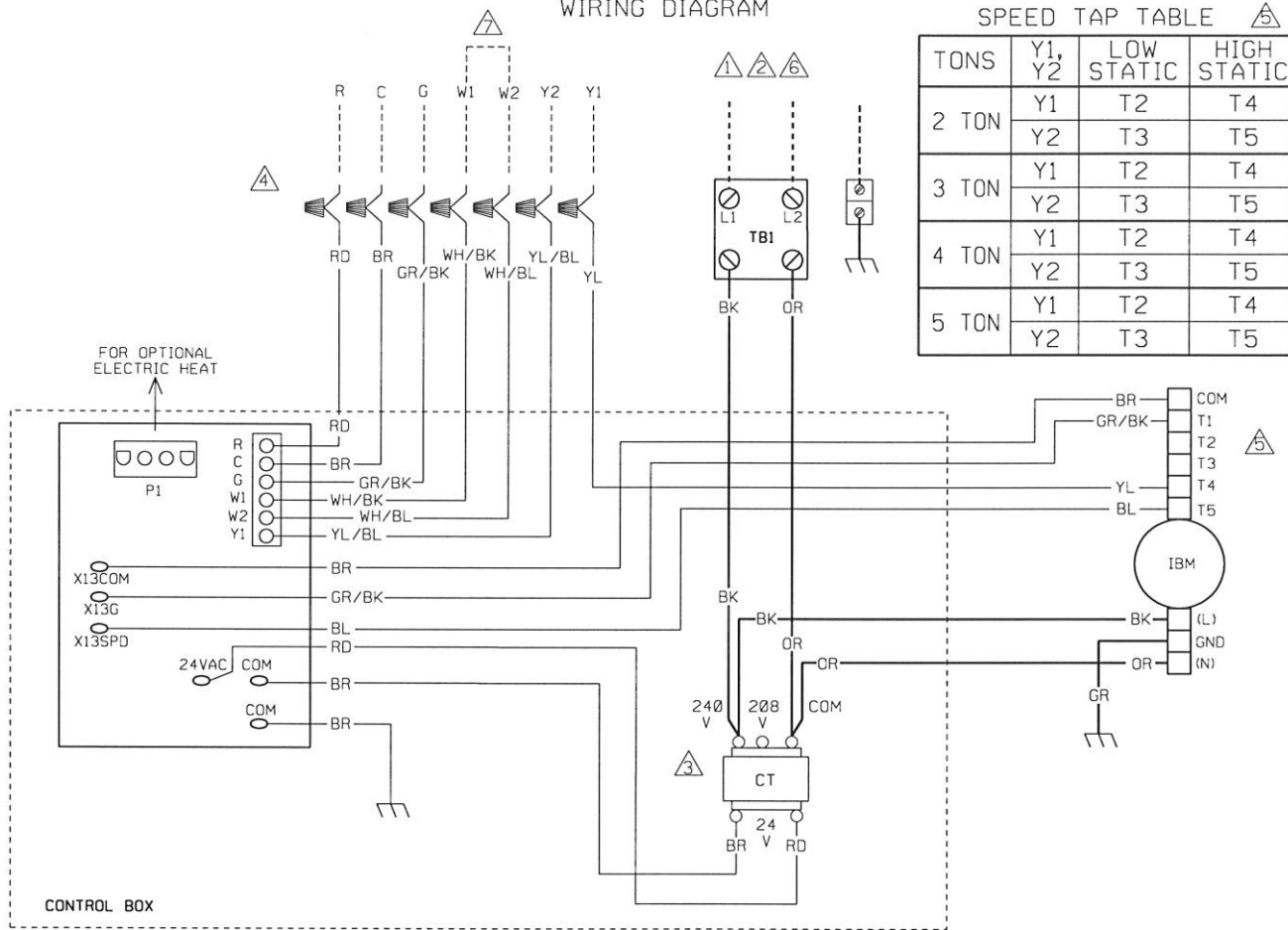


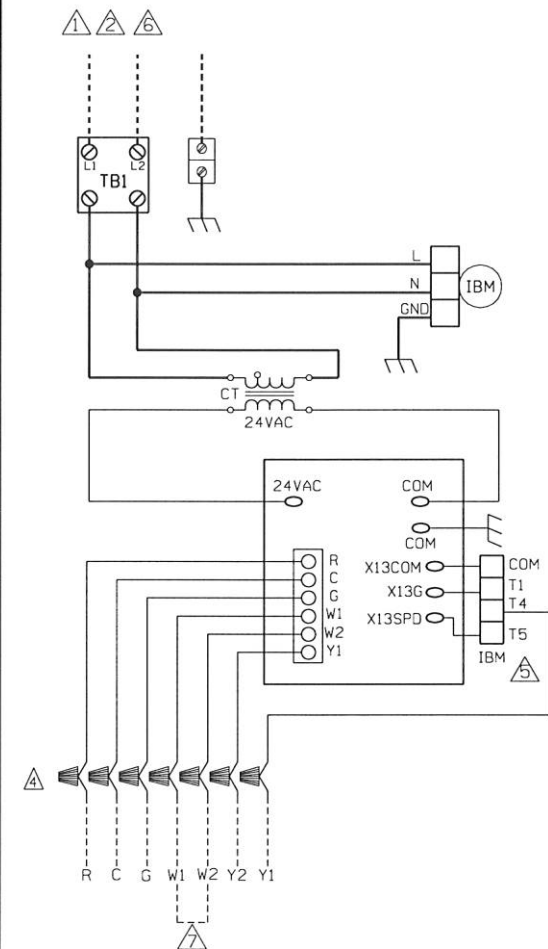
WIRING DIAGRAM



SPEED TAP TABLE

TONS	Y1, Y2	LOW STATIC	HIGH STATIC
2 TON	Y1	T2	T4
	Y2	T3	T5
3 TON	Y1	T2	T4
	Y2	T3	T5
4 TON	Y1	T2	T4
	Y2	T3	T5
5 TON	Y1	T2	T4
	Y2	T3	T5

SCHEMATIC DIAGRAM



COMPONENT CODE

CT CONTROL TRANSFORMER
 GND GROUND
 IBM INDOOR BLOWER MOTOR
 TB TERMINAL BLOCK (HI VOLT)
 ▲ WIRE NUT

NOTES:

1. CONNECT SUPPLY WIRING FOR VOLTAGE, PHASE AND HERTZ SHOWN ON RATING PLATE.
2. SUPPLY WIRE MUST BE RATED AT 75° C MIN. SEE INSTRUCTIONS FOR SIZE.
3. CT FACTORY WIRED FOR 240 VOLTS. MOVE WIRES FROM 240V TO 208V FOR 208V OPERATION.
4. CONTROL WIRING TO THERMOSTAT.
5. BLOWER SPEED SELECT (BL WIRE Y1) IS FACTORY WIRED TO HIGH STATIC SPEED TAB T4, AND THE (YL/BL WIRE Y2) IS WIRED TO HIGH STATIC SPEED TAB T5. (SEE SPEED TAP TABLE FOR ALTERNATE CONFIGURATION).
6. FOR USE WITH COPPER CONDUCTORS ONLY.
7. WHEN USING 13KW AND HIGHER IT IS RECOMMENDED TO JUMP W1 AND W2 TOGETHER FOR MAXIMUM TEMPERATURE RISE.

WIRING INFORMATION

LINE VOLTAGE
 -FACTORY STANDARD _____
 -FACTORY OPTION - - - - -
 -FIELD INSTALLED - - - - -

LOW VOLTAGE
 -FACTORY STANDARD _____
 -FACTORY OPTION - - - - -
 -FIELD INSTALLED - - - - -

REPLACEMENT WIRE
 -MUST BE THE SAME SIZE AND TYPE OF INSULATION AS ORIGINAL (105 C*MIN.)

WARNING
 -CABINET MUST BE PERMANENTLY GROUNDED AND CONFORM TO I.E.C., N.E.C., C.E.C. AND LOCAL CODES AS APPLICABLE.

WIRE COLOR CODE

BK BLACK	OR ORANGE
BR BROWN	PR PURPLE
BL BLUE	RD RED
GR GREEN	WH WHITE
GY GRAY	YL YELLOW

ELECTRICAL WIRING DIAGRAM

ELECTRICAL AIR HANDLER
 230V X-13 MOTOR