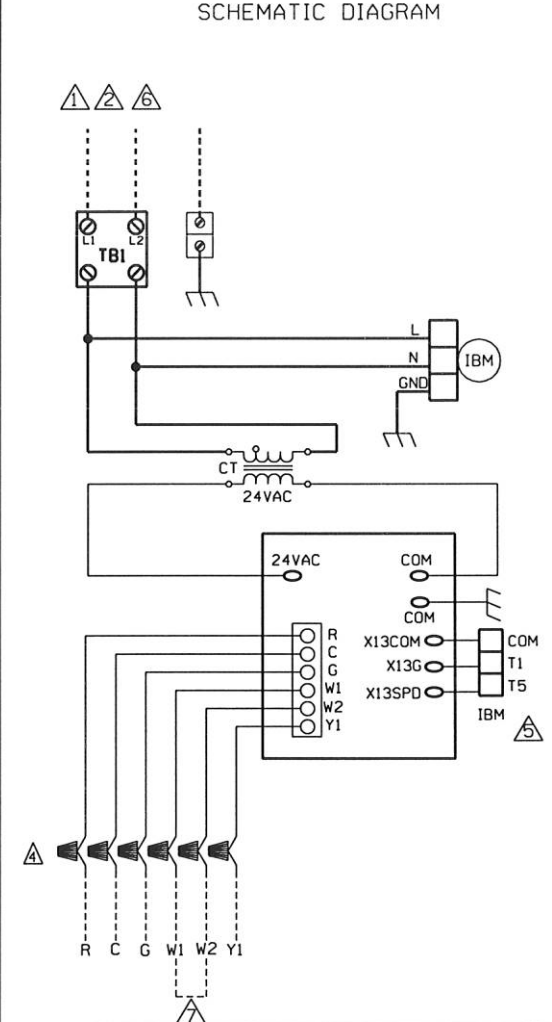
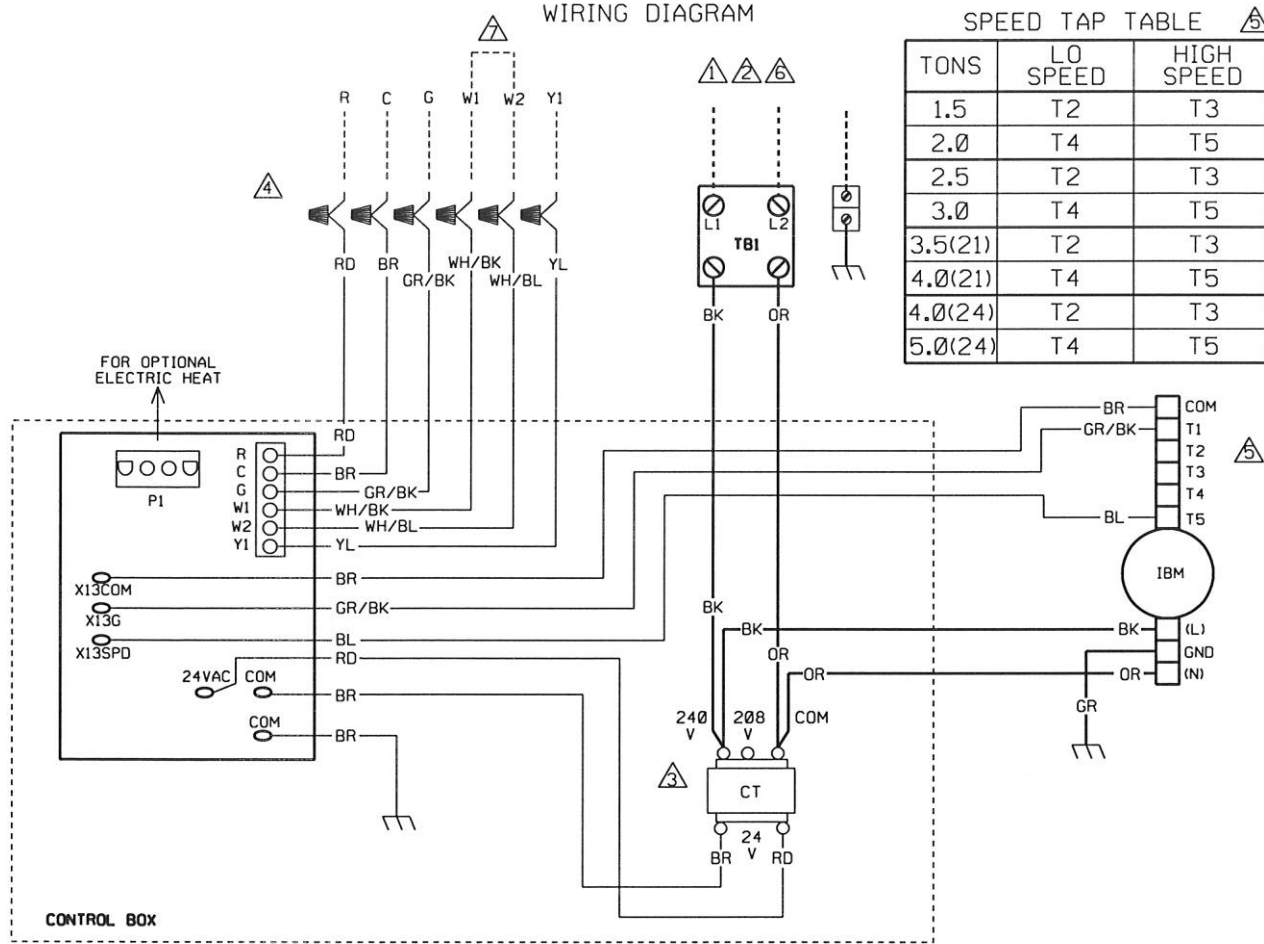


WIRING DIAGRAM

SPEED TAP TABLE

TONS	LO SPEED	HIGH SPEED
1.5	T2	T3
2.0	T4	T5
2.5	T2	T3
3.0	T4	T5
3.5(21)	T2	T3
4.0(21)	T4	T5
4.0(24)	T2	T3
5.0(24)	T4	T5

SCHEMATIC DIAGRAM



COMPONENT CODE

- CT CONTROL TRANSFORMER
- GND GROUND
- IBM INDOOR BLOWER MOTOR
- TB TERMINAL BLOCK (HI VOLT)
- ▲ WIRE NUT

NOTES:

- ⚠ CONNECT SUPPLY WIRING FOR VOLTAGE, PHASE AND HERTZ SHOWN ON RATING PLATE.
- ⚠ SUPPLY WIRE MUST BE RATED AT 75°C MIN. SEE INSTRUCTIONS FOR SIZE.
- ⚠ CT FACTORY WIRED FOR 240 VOLTS. MOVE WIRES FROM 240V TO 208V FOR 208V OPERATION.
- ⚠ CONTROL WIRING TO THERMOSTAT.
- ⚠ BLOWER SPEED SELECT (BL WIRE) IS FACTORY WIRED TO FULL TONNAGE HIGH SPEED TAB T5, EXCEPT FOR 4-TON IN 24" WIDE CABINET. 4-TON 24" IS FACTORY WIRED TO T3. (SEE SPEED TAP TABLE FOR ALTERNATE CONFIGURATION)
- ⚠ FOR USE WITH COPPER CONDUCTORS ONLY.
- ⚠ WHEN USING 13KW AND HIGHER IT IS RECOMMENDED TO JUMP W1 AND W2 TOGETHER FOR MAXIMUM TEMPERATURE RISE.

WIRING INFORMATION

- LINE VOLTAGE
 - FACTORY STANDARD _____
 - FACTORY OPTION - - - - -
 - FIELD INSTALLED - - - - -
- LOW VOLTAGE
 - FACTORY STANDARD _____
 - FACTORY OPTION - - - - -
 - FIELD INSTALLED - - - - -
- REPLACEMENT WIRE
 - MUST BE THE SAME SIZE AND TYPE OF INSULATION AS ORIGINAL (105 C° MIN.)
- WARNING
 - CABINET MUST BE PERMANENTLY GROUNDED AND CONFORM TO I.E.C., N.E.C., C.E.C. AND LOCAL CODES AS APPLICABLE.

WIRE COLOR CODE

- | | |
|----------|-----------|
| BK BLACK | OR ORANGE |
| BR BROWN | PR PURPLE |
| BL BLUE | RD RED |
| GR GREEN | WH WHITE |
| GY GRAY | YL YELLOW |

ELECTRICAL WIRING DIAGRAM

ELECTRICAL AIR HANDLER
230V X-13 MOTOR