

Ideal for applications where additional clearance is needed between the bottom of the fan and the roof. Perfect for snowy areas, flat or "S" tile roofs where less clearance could cause airflow problems. This provides an additional 2" of height from the roof deck. Only product certified through Dade County and approved for high winds. (160 mph)



Technical Information

Weight

Fan Weight: 19 lbs / 8.61 kg

Fan Packaged: 27 lbs. / 12.24 kg

Performance

Air Flow Rate:
900 to 1200 CFM
Depending on solar exposure
Ventilation: Up to 1250 sq.ft.
Attic must support intake air
for best performance

Electrical

Solar Panel: 25 watt, 17 to 22 DC,
1.25 amp, 36 mono-crystalline
cell, solar cells with black back
sheet
Motor: Solaro Max Aire
Brushless DC Motor, 10-22VDC

Material

Housing System: Spun Formed,
Aircraft Grade Aluminum
Fan Blade: 12" Aluminum, Factory Balanced
Mesh Screen: Stainless Steel, 1/4"
Mesh, Rodent Control
Wiring: 18 Gauge Copper Conductors
with PVC Insulation



Housing & Flashing System

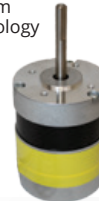
Aircraft grade, spun-formed
aluminum for the utmost
quality protection
Inner housing system is
aerodynamically designed
to produce the highest
possible radial air exhaust
Powder coated outer shell



Solaro Max Aire Motor

Maximum Efficiency Yield Technology

Brushless Electronic Motor with Maximum
Yield Technology. This new motor technology
was developed by Solaro Energy - Our
engineers leveraged lessons learned
from our original brushless electronic
motor that we used for over 12 years.
This new motor technology offers about
30% better efficiency and air moving
performance, with an amazing 100,000
hours average motor run time!



Components

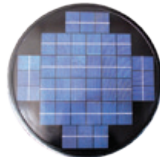
Mesh Screen

Constructed specifically for
the Solaro Aire
1/4" mesh screen keeps
animals and rodents
out while allowing
maximum air exhaust
Stainless Steel



Solar Panel

25 watt, 1.25 amp proprietary,
high purity, mono-crystalline
cell solar panel
Weather proof in the most
severe conditions
High transparent, low iron
tempered glass
Built for maximum performance and safety



Fan Blade

Specifically designed for the
Solaro Aire solar powered
ventilation system
12" - 5 blade aluminum fan,
aerodynamically optimized
blade to improve airflow
Operates whisper quiet
throughout the day

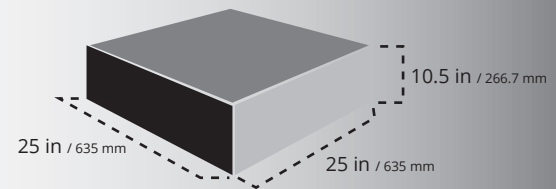
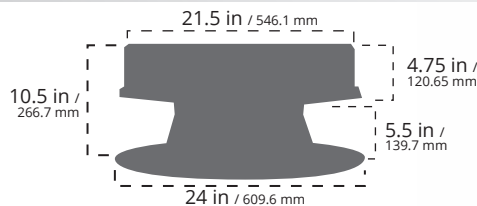


Motor & Fan Mount

The Max Aire motor is
mounted under the
aluminum air
deflector. Keeping it
out of the air stream



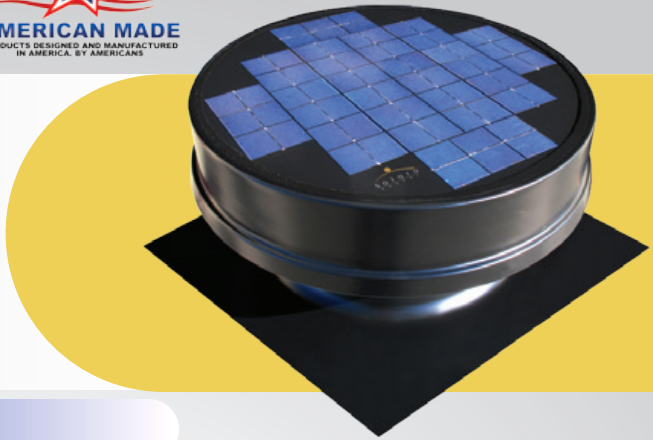
Dimensions & Weight



Important Note: The Solaro Aire Attic Fan Ventilation System is 100% fire proof and all electrical components are hidden under the air diverting cowling creating an extremely safe and efficient ventilation system

Limited Lifetime Warranty - See warranty details for additional information.

Provides the same performance as the high profile base, when additional clearance is not necessary. Tucks in closer to the roof to be less conspicuous and more resistant to high winds. Only product certified through Dade County and approved for high winds. (160 mph)



Technical Information

Weight

Fan Weight: 19 lbs / 8.61 kg

Fan Packaged: 27 lbs. / 12.24 kg

Performance

Air Flow Rate:
900 to 1200 CFM
Depending on solar exposure

Ventilation: Up to 1250 sq.ft.
Attic must support intake air
for best performance

Electrical

Solar Panel: 25 watt, 17 to 22 DC,
1.25 amp, 36 mono-crystalline
cell, solar cells with black back
sheet

Motor: Solaro Max Aire
Brushless DC Motor, 10-22VDC

Material

Housing System: Spun Formed,
Aircraft Grade Aluminum
Fan Blade: 12" Aluminum, Factory Balanced
Mesh Screen: Stainless Steel, 1/4"
Mesh, Rodent Control
Wiring: 18 Gauge Copper Conductors
with PVC Insulation



Housing & Flashing System

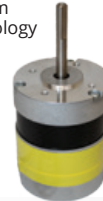
Aircraft grade, spun-formed
aluminum for the utmost
quality protection
Inner housing system is
aerodynamically designed
to produce the highest
possible radial air exhaust
Powder coated outer shell



Solaro Max Aire Motor

Maximum Efficiency Yield Technology

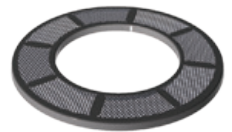
Brushless Electronic Motor with Maximum
Yield Technology. This new motor technology
was developed by Solaro Energy - Our
engineers leveraged lessons learned
from our original brushless electronic
motor that we used for over 12 years.
This new motor technology offers about
30% better efficiency and air moving
performance, with an amazing 100,000
hours average motor run time!



Components

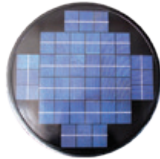
Mesh Screen

Constructed specifically for
the Solaro Aire
1/4" mesh screen keeps
animals and rodents
out while allowing
maximum air exhaust
Stainless Steel



Solar Panel

25 watt, 1.25 amp proprietary,
high purity, mono-crystalline
cell solar panel
Weather proof in the most
severe conditions
High transparent, low iron
tempered glass
Built for maximum performance and safety



Fan Blade

Specifically designed for the
Solaro Aire solar powered
ventilation system
12" - 5 blade aluminum fan,
aerodynamically optimized
blade to improve airflow
Operates whisper quiet
throughout the day

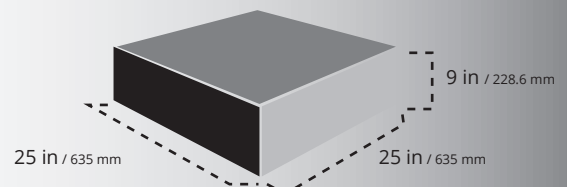
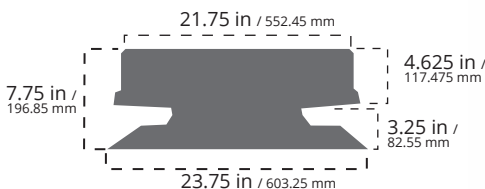


Motor & Fan Mount

The Max Aire motor is
mounted under the
aluminum air
deflector. Keeping it
out of the air stream



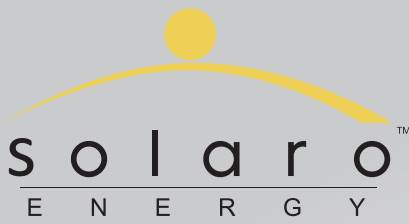
Dimensions & Weight



Important Note: The Solaro Aire Attic Fan Ventilation System is 100% fire proof and all electrical components are hidden under the air diverting cowling creating an extremely safe and efficient ventilation system

Limited Lifetime Warranty - See warranty details for additional information.

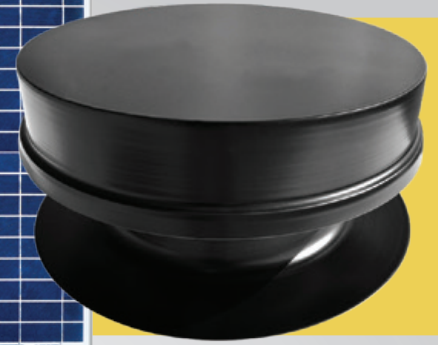
888-355-5786



Specification Sheet

Model # SA-27WR-HPE

The Remote Solar Panel models are perfect for installing the attic fan and solar panel separately, due to limited light access in a desired fan location. Includes 25 ft. of Interconnect Cable. Only product certified through Dade County and approved for high winds. (160 mph)



Technical Information

Weight

Fan Weight: 19 lbs / 8.61 kg

Fan Packaged: 28 lbs. / 12.7 kg

Performance

Air Flow Rate:
900 to 1200 CFM
Depending on solar exposure

Ventilation: Up to 1250 sq.ft.
Attic must support intake air
for best performance

Electrical

Solar Panel: 27 watt, 17 to 22 DC,
1.25 amp, 36 mono-crystalline
cell, solar cells with black back
sheet

Motor: Solaro Max Aire
Brushless DC Motor, 10-22VDC

Material

Housing System: Spun Formed,
Aircraft Grade Aluminum
Fan Blade: 12" Aluminum, Factory Balanced
Mesh Screen: Stainless Steel, 1/4"
Mesh, Rodent Control
Wiring: 18 Gauge Copper Conductors
with PVC Insulation



Housing & Flashing System

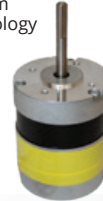
Aircraft grade, spun-formed
aluminum for the utmost
quality protection
Inner housing system is
aerodynamically designed
to produce the highest
possible radial air exhaust
Powder coated outer shell



Solaro Max Aire Motor

Maximum Efficiency Yield Technology

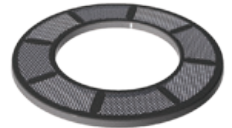
Brushless Electronic Motor with Maximum
Yield Technology. This new motor technology
was developed by Solaro Energy - Our
engineers leveraged lessons learned
from our original brushless electronic
motor that we used for over 12 years.
This new motor technology offers about
30% better efficiency and air moving
performance, with an amazing 100,000
hours average motor run time!



Components

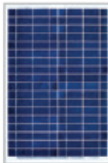
Mesh Screen

Constructed specifically for
the Solaro Aire
1/4" mesh screen keeps
animals and rodents
out while allowing
maximum air exhaust
Stainless Steel



Solar Panel

27 watt, 1.25 amp proprietary,
high purity, mono-crystalline
cell solar panel
Weather proof in the most
severe conditions
High transparent, low iron
tempered glass
Built for maximum performance and safety



Fan Blade

Specifically designed for the
Solaro Aire solar powered
ventilation system
12" - 5 blade aluminum fan,
aerodynamically optimized
blade to improve airflow
Operates whisper quiet
throughout the day

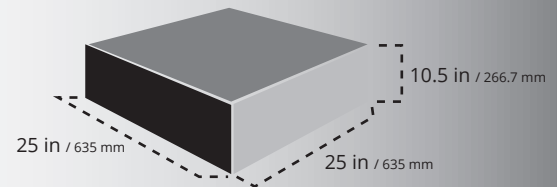
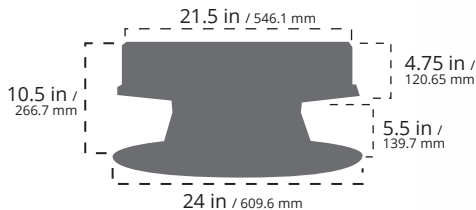


Motor & Fan Mount

The Max Aire motor is
mounted under the
aluminum air
deflector. Keeping it
out of the air stream



Dimensions & Weight



Important Note: The Solaro Aire Attic Fan Ventilation System is 100% fire proof and all electrical components are hidden under the air diverting cowling creating an extremely safe and efficient ventilation system

Limited Lifetime Warranty - See warranty details for additional information.

888-355-5786



solaroenergy.com

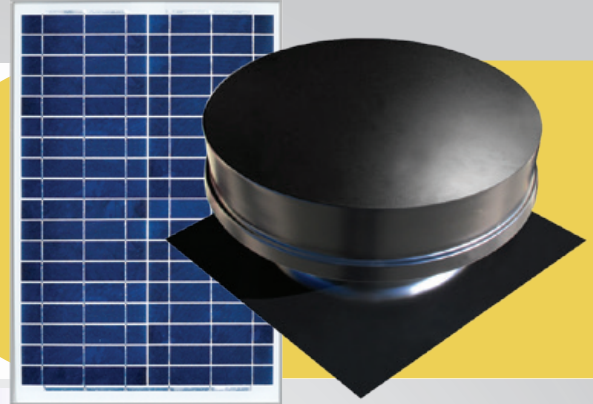
22955 McAuliffe Drive, Suite A • Robertsdale, AL 65767



Specification Sheet

Model # SA-27WR-LPE

The Remote Solar Panel models are perfect for installing the attic fan and solar panel separately, due to limited light access in a desired fan location. Includes 25 ft. of Interconnect Cable. Tucks in closer to the roof to be less conspicuous and more resistant to high winds. Only product certified through Dade County and approved for high winds. (160 mph)



Technical Information

Weight

Fan Weight: 19 lbs / 8.61 kg

Fan Packaged: 28 lbs. / 12.7 kg

Performance

Air Flow Rate:
900 to 1200 CFM
Depending on solar exposure
Ventilation: Up to 1250 sq.ft.
Attic must support intake air
for best performance

Electrical

Solar Panel: 27 watt, 17 to 22 DC,
1.25 amp, 36 mono-crystalline
cell, solar cells with black back
sheet
Motor: Solaro Max Aire
Brushless DC Motor, 10-22VDC

Material

Housing System: Spun Formed,
Aircraft Grade Aluminum
Fan Blade: 12" Aluminum, Factory Balanced
Mesh Screen: Stainless Steel, 1/4"
Mesh, Rodent Control
Wiring: 18 Gauge Copper Conductors
with PVC Insulation



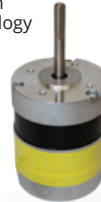
Housing & Flashing System

Aircraft grade, spun-formed
aluminum for the utmost
quality protection
Inner housing system is
aerodynamically designed
to produce the highest
possible radial air exhaust
Powder coated outer shell



Solaro Max Aire Motor

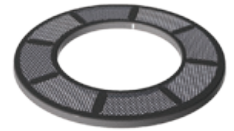
Brushless Electronic Motor with Maximum
Yield Technology. This new motor technology
was developed by Solaro Energy - Our
engineers leveraged lessons learned
from our original brushless electronic
motor that we used for over 12 years.
This new motor technology offers about
30% better efficiency and air moving
performance, with an amazing 100,000
hours average motor run time!



Components

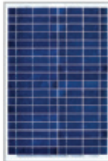
Mesh Screen

Constructed specifically for
the Solaro Aire
1/4" mesh screen keeps
animals and rodents
out while allowing
maximum air exhaust
Stainless Steel



Solar Panel

27 watt, 1.25 amp proprietary,
high purity, mono-crystalline
cell solar panel
Weather proof in the most
severe conditions
High transparent, low iron
tempered glass
Built for maximum performance and safety



Fan Blade

Specifically designed for the
Solaro Aire solar powered
ventilation system
12" - 5 blade aluminum fan,
aerodynamically optimized
blade to improve airflow
Operates whisper quiet
throughout the day

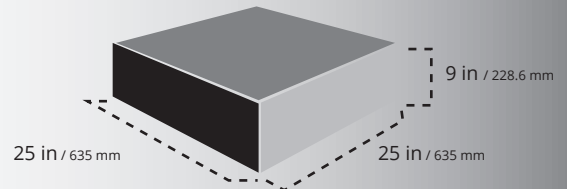
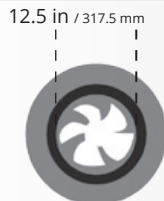
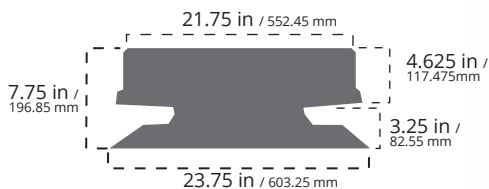


Motor & Fan Mount

The Max Aire motor is
mounted under the
aluminum air
deflector. Keeping it
out of the air stream



Dimensions & Weight



Important Note: The Solaro Aire Attic Fan Ventilation System is 100% fire proof and all electrical components are hidden under the air diverting cowling creating an extremely safe and efficient ventilation system

Limited Lifetime Warranty - See warranty details for additional information.

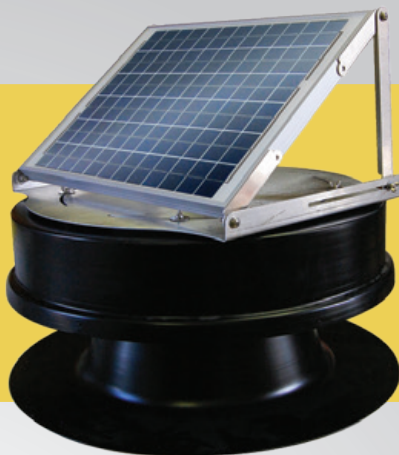
888-355-5786



solaroenergy.com

22955 McAuliffe Drive, Suite A • Robertsdale, AL 65767

Perfect for any installation requiring movement of the solar panel. Can be tilted and raised to 35 degrees or set flat against the solar fan. The Tilt Fan can also be rotated 360 degrees. As the seasons change, so does the angle of the sun. This solar panel can be changed year round to provide maximum performance.



Technical Information

Weight

Fan Weight: 24 lbs / 10.88 kg

Fan Packaged: 29 lbs. / 13.15 kg

Performance

Air Flow Rate:
900 to 1200 CFM
Depending on solar exposure
Ventilation: Up to 1250 sq.ft.
Attic must support intake air
for best performance

Electrical

Solar Panel: 27 watt, 17 to 22 DC,
1.25 amp, 36 mono-crystalline
cell, solar cells with black back
sheet
Motor: Solaro Max Aire
Brushless DC Motor, 10-22VDC

Material

Housing System: Spun Formed,
Aircraft Grade Aluminum
Fan Blade: 12" Aluminum, Factory Balanced
Mesh Screen: Stainless Steel, 1/4"
Mesh, Rodent Control
Wiring: 18 Gauge Copper Conductors
with PVC Insulation



Housing & Flashing System

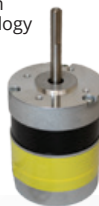
Aircraft grade, spun-formed
aluminum for the utmost
quality protection
Inner housing system is
aerodynamically designed
to produce the highest
possible radial air exhaust
Powder coated outer shell



Solaro Max Aire Motor

Maximum Efficiency Yield Technology

Brushless Electronic Motor with Maximum
Yield Technology. This new motor technology
was developed by Solaro Energy - Our
engineers leveraged lessons learned
from our original brushless electronic
motor that we used for over 12 years.
This new motor technology offers about
30% better efficiency and air moving
performance, with an amazing 100,000
hours average motor run time!



Components

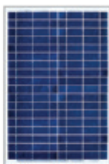
Mesh Screen

Constructed specifically for
the Solaro Aire
1/4" mesh screen keeps
animals and rodents
out while allowing
maximum air exhaust
Stainless Steel



Solar Panel

27 watt, 1.25 amp proprietary,
high purity, mono-crystalline
cell solar panel
Weather proof in the most
severe conditions
High transparent, low iron
tempered glass
Built for maximum performance and safety



Fan Blade

Specifically designed for the
Solaro Aire solar powered
ventilation system
12" - 5 blade aluminum fan,
aerodynamically optimized
blade to improve airflow
Operates whisper quiet
throughout the day

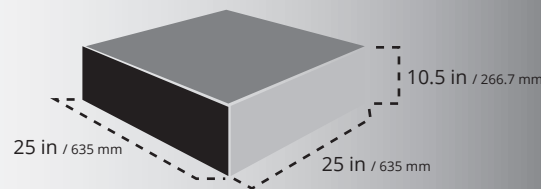
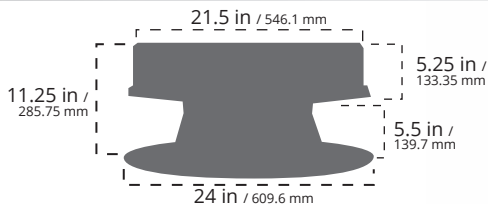


Motor & Fan Mount

The Max Aire motor is
mounted under the
aluminum air
deflector. Keeping it
out of the air stream



Dimensions & Weight



Important Note: The Solaro Aire Attic Fan Ventilation System is 100% fire proof and all electrical components are hidden under the air diverting cowling creating an extremely safe and efficient ventilation system

Limited Lifetime Warranty - See warranty details for additional information.

Provides the same performance as the high profile base, when additional clearance is not necessary. Tucks in closer to the roof to be less conspicuous and more resistant to high winds. Perfect for any installation requiring movement of the solar panel. Can be tilted and raised to 35 degrees or set flat against the solar fan. The Tilt Fan can also be rotated 360 degrees. As the seasons change, so does the angle of the sun. This solar panel can be changed year round to provide maximum performance.



Technical Information

Weight

Fan Weight: 24 lbs / 10.88 kg

Fan Packaged: 29 lbs. / 13.15 kg

Performance

Air Flow Rate:
900 to 1200 CFM
Depending on solar exposure
Ventilation: Up to 1250 sq.ft.
Attic must support intake air
for best performance

Electrical

Solar Panel: 27 watt, 17 to 22 DC,
1.25 amp, 36 mono-crystalline
cell, solar cells with black back
sheet

Motor: Solaro Max Aire
Brushless DC Motor, 10-22VDC

Material

Housing System: Spun Formed,
Aircraft Grade Aluminum
Fan Blade: 12" Aluminum, Factory Balanced
Mesh Screen: Stainless Steel, 1/4"
Mesh, Rodent Control
Wiring: 18 Gauge Copper Conductors
with PVC Insulation



Housing & Flashing System

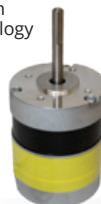
Aircraft grade, spun-formed
aluminum for the utmost
quality protection
Inner housing system is
aerodynamically designed
to produce the highest
possible radial air exhaust
Powder coated outer shell



Solaro Max Aire Motor

Maximum Efficiency Yield Technology

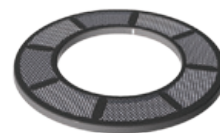
Brushless Electronic Motor with Maximum
Yield Technology. This new motor technology
was developed by Solaro Energy - Our
engineers leveraged lessons learned
from our original brushless electronic
motor that we used for over 12 years.
This new motor technology offers about
30% better efficiency and air moving
performance, with an amazing 100,000
hours average motor run time!



Components

Mesh Screen

Constructed specifically for
the Solaro Aire
1/4" mesh screen keeps
animals and rodents
out while allowing
maximum air exhaust
Stainless Steel



Solar Panel

27 watt, 1.25 amp proprietary,
high purity, mono-crystalline
cell solar panel
Weather proof in the most
severe conditions
High transparent, low iron
tempered glass
Built for maximum performance and safety



Fan Blade

Specifically designed for the
Solaro Aire solar powered
ventilation system
12" - 5 blade aluminum fan,
aerodynamically optimized
blade to improve airflow
Operates whisper quiet
throughout the day

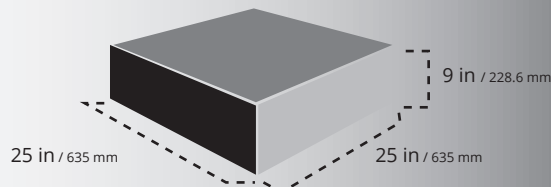
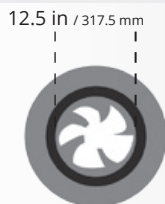
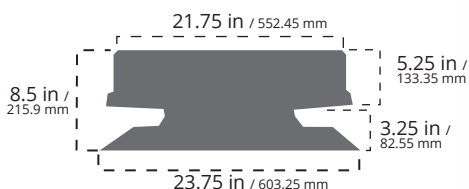


Motor & Fan Mount

The Max Aire motor is
mounted under the
aluminum air
deflector. Keeping it
out of the air stream



Dimensions & Weight



Important Note: The Solaro Aire Attic Fan Ventilation System is 100% fire proof and all electrical components are hidden under the air diverting cowling creating an extremely safe and efficient ventilation system

Limited Lifetime Warranty - See warranty details for additional information.