

SUBMITTAL DATA: MSY-GE09NA & MUY-GE09NA

9,000 BTU/H WALL-MOUNTED AIR-CONDITIONING SYSTEMS

Job Name:	Location:	Date:
Purchaser:	Engineer:	
Submitted to:	For <input type="checkbox"/> Reference <input type="checkbox"/> Approval <input type="checkbox"/> Construction	
Unit Designation:	Schedule No.:	

GENERAL FEATURES

- Wall-mounted indoor unit
- Standard Hybrid Catechin Prefilter is included with indoor unit
- Quiet operation
- Choice of fan speeds: Quiet, Low, Medium, High, and Super High; Auto fan speed control also included
- Wireless remote controller is included; PAR-21MAA wired remote controller can be installed as an option
- Indoor unit powered from outdoor unit using A-Control
- Auto restart following a power outage
- Limited warranty: five years on parts and defects and seven years on the compressor

OPTIONAL ACCESSORIES
Outdoor Unit

- Drain Socket Assembly (MAC-860DS)

Indoor Unit

- M-NET Control Adapter (MAC-399IF)
- MA Contact Terminal Interface (MAC-397IF)
- Wired Remote Controller (PAR-21MAA; requires MAC-397IF)
- Condensate Pump (230V; SI3100-230)
- Anti-allergy Enzyme Filter (Two pieces per set; MAC-408FT-E)

Cooling*

Rated Capacity 9,000 Btu/h
 Minimum Capacity 3,800 Btu/h
 SEER 21.0 Btu/h/W
 Total Input 660 W
* Rating Conditions (Cooling) - Indoor: 80°F (27°C) DB, 67°F (19°C) WB; Outdoor: 95°F (35°C) DB, 75°F (24°C) WB.

Electrical Requirements

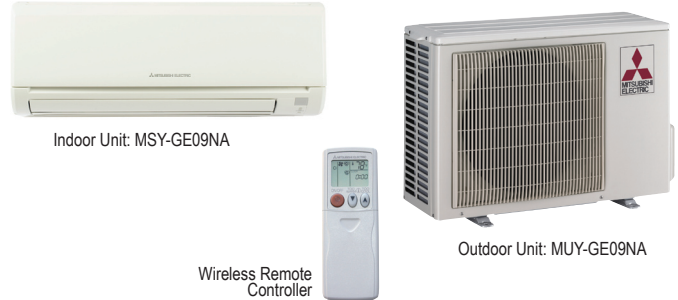
Power Supply 208 / 230V, 1-Phase, 60 Hz
 Breaker Size 15 A

Voltage

Indoor - Outdoor S1-S2 AC 208 / 230V
 Indoor - Outdoor S2-S3 DC 12-24V
 Indoor - Remote Controller Wireless

OPERATING RANGE

		Indoor Intake Air Temp.	Outdoor Intake Air Temp.
Cooling	Maximum	90°F (32°C) DB, 73°F (23°C) WB	115°F (46°C) DB
	Minimum	67°F (19°C) DB, 57°F (14°C) WB	14°F (-10°C) DB


Indoor Unit

MCA 1 A
 Fan Motor 0.76 F.L.A.
 Airflow (Quiet - Lo - Med - Hi - Super Hi)
 Cooling 145 - 170 - 237 - 321 - 399 Dry CFM
 109 - 134 - 201 - 286 - 364 Wet CFM
 Sound Pressure Level (Quiet - Lo - Med - Hi - Super Hi)
 Cooling 19 - 22 - 30 - 37 - 43 dB(A)

DIMENSIONS	UNIT INCHES / MM
W	31-7/16 / 799
D	9-1/8 / 232
H	11-5/8 / 295

Weight 22 lbs. / 10 kg
 External Finish Munsell No. 1.0Y 9.2 / 0.2
 Field Drainpipe Size O.D. 5/8" / 15.88 mm
 Remote Controller Wireless
 (Optional Wired Remote Controller PAR-21MAA;
 see Data Submittal Sheet)

Outdoor Unit

Compressor DC Inverter-driven
 MCA 12 A
 Fan Motor 0.50 F.L.A.
 Sound Pressure Level
 Cooling 46 dB(A)

DIMENSIONS	INCHES / MM
W	31-1/2 / 800
D	11-1/4 / 286
H	21-5/8 / 549

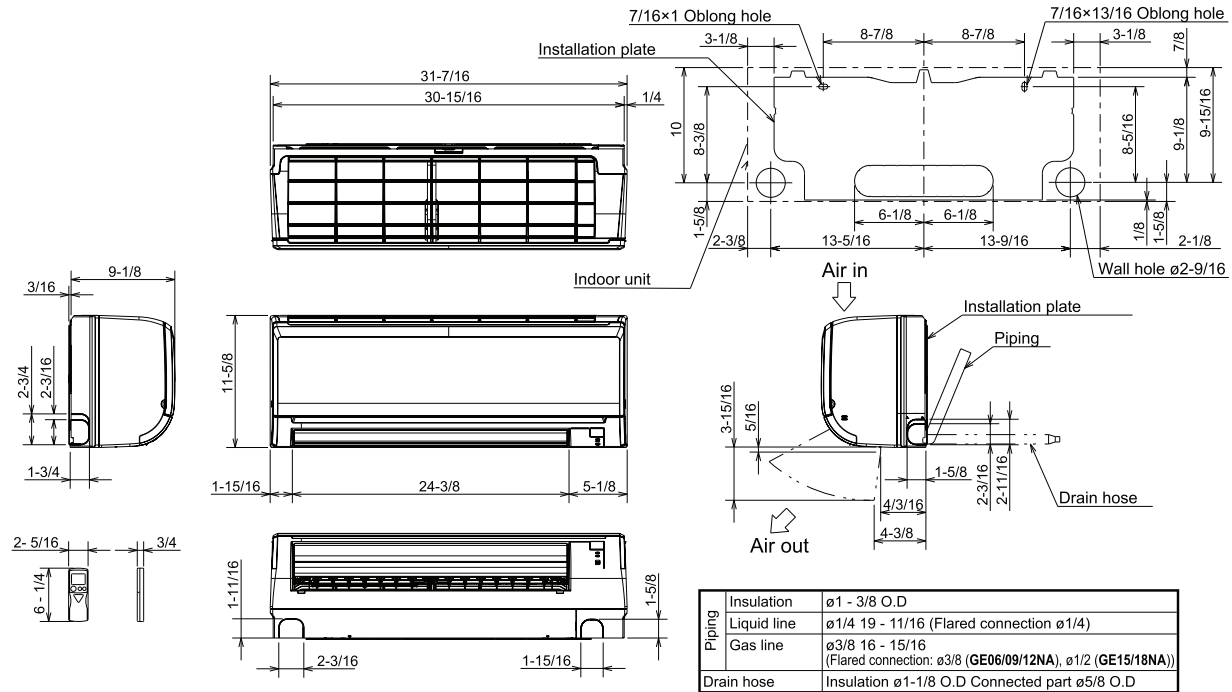
Weight 66 lbs. / 30 kg
 External Finish Munsell No. 3Y 7.8 / 1.1
 Refrigerant Type R410A
 Refrigerant Pipe Size O.D.
 Gas Side 3/8" / 9.52 mm
 Liquid Side 1/4" / 6.35 mm
 Max. Refrigerant Pipe Length 65 ft. / 20 m
 Max. Refrigerant Pipe Height Difference 40 ft. / 12 m
 Connection Method Flared



DIMENSIONS: MSY-GE09NA & MUY-GE09NA

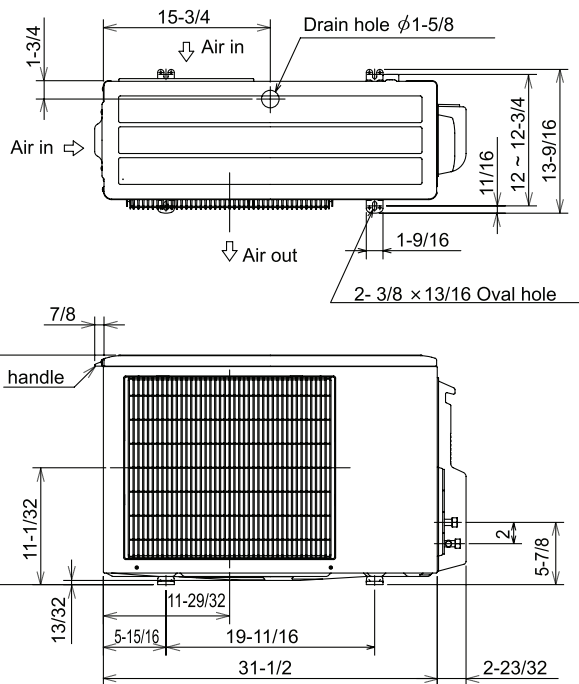
MSY-GE09NA

Unit: inch

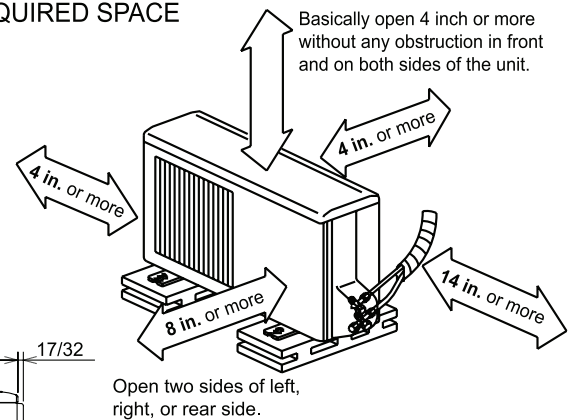


MUY-GE09NA

Unit: inch



REQUIRED SPACE



Liquid pipe :1/4 (flared)
 Gas pipe :3/8 (flared) (GE09/12)
 :1/2 (flared) (GE15)



HVAC Advanced Products Division
 3400 Lawrenceville Suwanee Rd
 Suwanee, GA 30024
 Tele: 678-376-2900 • Fax: 800-889-9904
 Toll Free: 800-433-4822 (#3)
 www.mehvac.com
Specifications are subject to change without notice.

SUBMITTAL DATA: MSY-GE12NA & MUY-GE12NA

12,000 BTU/H WALL-MOUNTED AIR-CONDITIONING SYSTEMS

Job Name:	Location:	Date:
Purchaser:	Engineer:	
Submitted to:	For <input type="checkbox"/> Reference <input type="checkbox"/> Approval <input type="checkbox"/> Construction	
Unit Designation:	Schedule No.:	

GENERAL FEATURES

- Wall-mounted indoor unit
- Standard Hybrid Catechin Prefilter is included with indoor unit
- Quiet operation
- Choice of fan speeds: Quiet, Low, Medium, High, and Super High; Auto fan speed control also included
- Wireless remote controller is included; PAR-21MAA wired remote controller can be installed as an option
- Indoor unit powered from outdoor unit using A-Control
- Auto restart following a power outage
- Limited warranty: five years on parts and defects and seven years on the compressor

OPTIONAL ACCESSORIES
Outdoor Unit

- Drain Socket Assembly (MAC-860DS)

Indoor Unit

- M-NET Control Adapter (MAC-399IF)
- MA Contact Terminal Interface (MAC-397IF)
- Wired Remote Controller (PAR-21MAA; requires MAC-397IF)
- Condensate Pump (230V; SI3100-230)
- Anti-allergy Enzyme Filter (Two pieces per set; MAC-408FT-E)

Cooling*

Rated Capacity 12,000 Btu/h
 Minimum Capacity 3,800 Btu/h
 SEER 20.5 Btu/h/W
 Total Input 960 W

* Rating Conditions (Cooling) - Indoor: 80°F (27°C) DB, 67°F (19°C) WB; Outdoor: 95°F (35°C) DB, 75°F (24°C) WB.

Electrical Requirements

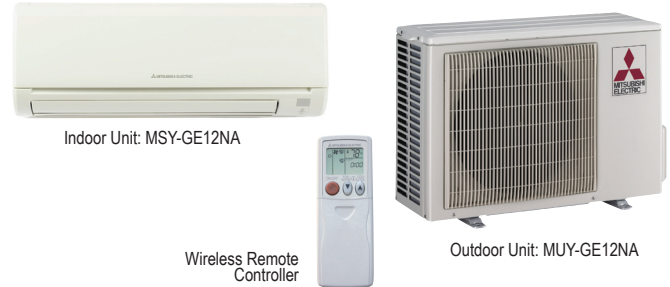
Power Supply 208 / 230V, 1-Phase, 60 Hz
 Breaker Size 15 A

Voltage

Indoor - Outdoor S1-S2 AC 208 / 230V
 Indoor - Outdoor S2-S3 DC 12-24V
 Indoor - Remote Controller Wireless

OPERATING RANGE

		Indoor Intake Air Temp.	Outdoor Intake Air Temp.
Cooling	Maximum	90°F (32°C) DB, 73°F (23°C) WB	115°F (46°C) DB
	Minimum	67°F (19°C) DB, 57°F (14°C) WB	14°F (-10°C) DB


Indoor Unit

MCA 1 A
 Fan Motor 0.76 F.L.A.
 Airflow (Quiet - Lo - Med - Hi - Super Hi)
 Cooling 145 - 170 - 237 - 321 - 399 Dry CFM
 109 - 134 - 201 - 286 - 364 Wet CFM

Sound Pressure Level (Quiet - Lo - Med - Hi - Super Hi)
 Cooling 19 - 22 - 30 - 37 - 45 dB(A)

DIMENSIONS	UNIT INCHES / MM
W	31-7/16 / 799
D	9-1/8 / 232
H	11-5/8 / 295

Weight 22 lbs. / 10 kg
 External Finish Munsell No. 1.0Y 9.2 / 0.2
 Field Drainpipe Size O.D. 5/8" / 15.88 mm
 Remote Controller Wireless
 (Optional Wired Remote Controller PAR-21MAA;
 see Data Submittal Sheet)

Outdoor Unit

Compressor DC Inverter-driven
 MCA 12 A
 Fan Motor 0.50 F.L.A.
 Sound Pressure Level
 Cooling 49 dB(A)

DIMENSIONS	INCHES / MM
W	31-1/2 / 800
D	11-1/4 / 286
H	21-5/8 / 549

Weight 77 lbs. / 35 kg
 External Finish Munsell No. 3Y 7.8 / 1.1

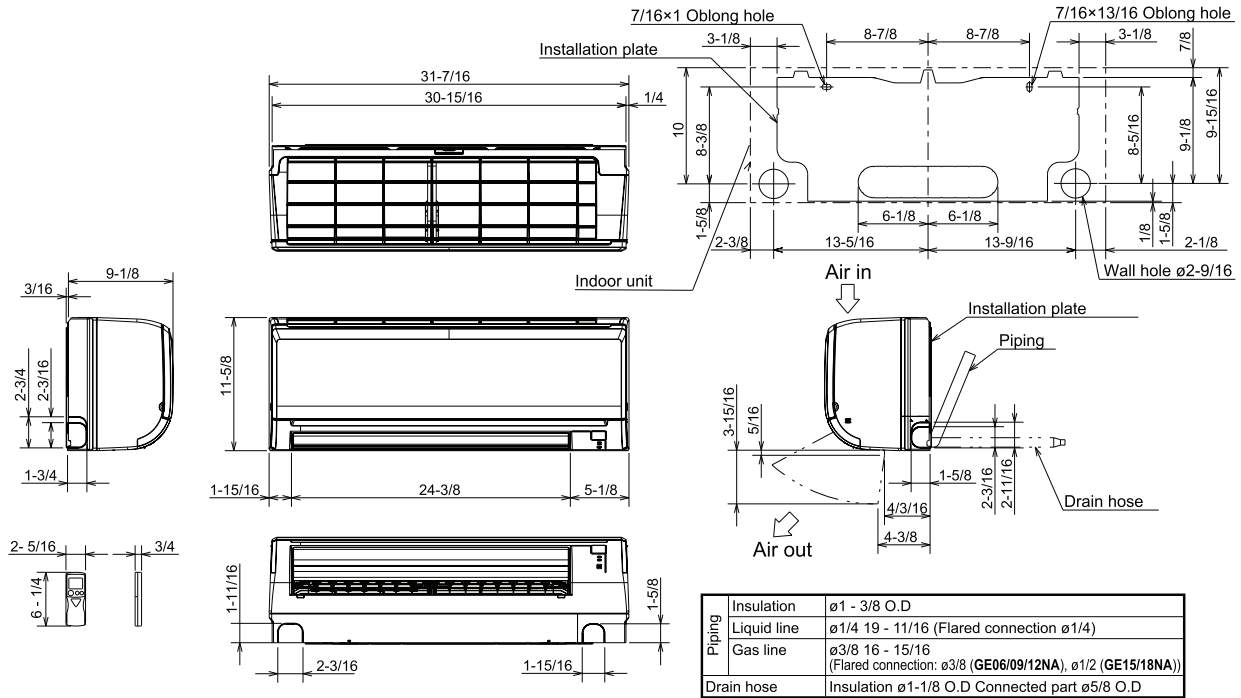
Refrigerant Type R410A
 Refrigerant Pipe Size O.D.
 Gas Side 3/8" / 9.52 mm
 Liquid Side 1/4" / 6.35 mm
 Max. Refrigerant Pipe Length 65 ft. / 20 m
 Max. Refrigerant Pipe Height Difference 40 ft. / 12 m
 Connection Method Flared



DIMENSIONS: MSY-GE12NA & MUY-GE12NA

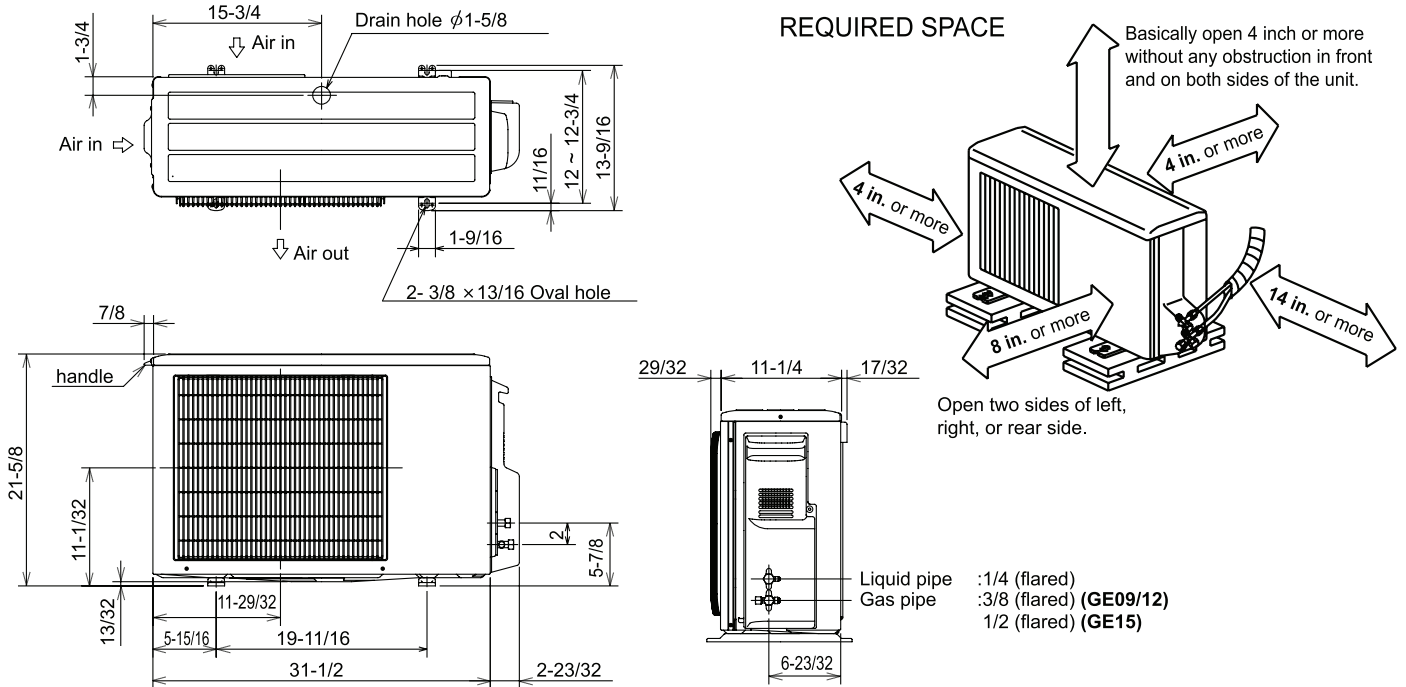
MSY-GE12NA

Unit: inch



MUY-GE12NA

Unit: inch



HVAC Advanced Products Division
3400 Lawrenceville Suwanee Rd
Suwanee, GA 30024
Tele: 678-376-2900 • Fax: 800-889-9904
Toll Free: 800-433-4822 (#3)
www.mehvac.com
Specifications are subject to change without notice.

SUBMITTAL DATA: MSY-GE15NA & MUY-GE15NA

15,000 BTU/H WALL-MOUNTED AIR-CONDITIONING SYSTEMS

Job Name:	Location:	Date:
Purchaser:	Engineer:	
Submitted to:	For <input type="checkbox"/> Reference <input type="checkbox"/> Approval <input type="checkbox"/> Construction	
Unit Designation:	Schedule No.:	

GENERAL FEATURES

- Wall-mounted indoor unit
- Standard Hybrid Catechin Prefilter is included with indoor unit
- Quiet operation
- Choice of fan speeds: Quiet, Low, Medium, High, and Super High; Auto fan speed control also included
- Wireless remote controller is included; PAR-21MAA wired remote controller can be installed as an option
- Indoor unit powered from outdoor unit using A-Control
- Auto restart following a power outage
- Limited warranty: five years on parts and defects and seven years on the compressor

OPTIONAL ACCESSORIES
Outdoor Unit

- Drain Socket Assembly (MAC-860DS)

Indoor Unit

- M-NET Control Adapter (MAC-399IF)
- MA Contact Terminal Interface (MAC-397IF)
- Wired Remote Controller (PAR-21MAA; requires MAC-397IF)
- Condensate Pump (230V; SI3100-230)
- Anti-allergy Enzyme Filter (Two pieces per set; MAC-408FT-E)

Cooling*

Rated Capacity 14,000 Btu/h
 Minimum Capacity 3,100 Btu/h
 SEER 21.0 Btu/h/W
 Total Input 1,080 W
 * Rating Conditions (Cooling) - Indoor: 80°F (27°C) DB, 67°F (19°C) WB; Outdoor: 95°F (35°C) DB, 75°F (24°C) WB.

Electrical Requirements

Power Supply 208 / 230V, 1-Phase, 60 Hz
 Breaker Size 15 A

Voltage

Indoor - Outdoor S1-S2 AC 208 / 230V
 Indoor - Outdoor S2-S3 DC 12-24V
 Indoor - Remote Controller Wireless

OPERATING RANGE

		Indoor Intake Air Temp.	Outdoor Intake Air Temp.
Cooling	Maximum	90°F (32°C) DB, 73°F (23°C) WB	115°F (46°C) DB
	Minimum	67°F (19°C) DB, 57°F (14°C) WB	14°F (-10°C) DB



Indoor Unit: MSY-GE15NA



Outdoor Unit: MUY-GE15NA


 Wireless Remote
Controller

Indoor Unit

MCA 1 A
 Fan Motor 0.76 F.L.A.
 Airflow (Quiet - Lo - Med - Hi - Super Hi)
 Cooling 205 - 272 - 335 - 420 - 533 Dry CFM
 170 - 237 - 300 - 385 - 498 Wet CFM

Sound Pressure Level (Quiet - Lo - Med - Hi - Super Hi)

Cooling 26 - 32 - 38 - 44 - 49 dB(A)

DIMENSIONS	UNIT INCHES / MM
W	31-7/16 / 799
D	9-1/8 / 232
H	11-5/8 / 295

Weight 22 lbs. / 10 kg
 External Finish Munsell No. 1.0Y 9.2 / 0.2
 Field Drainpipe Size O.D. 5/8" / 15.88 mm
 Remote Controller Wireless
 (Optional Wired Remote Controller PAR-21MAA;
 see Data Submittal Sheet)

Outdoor Unit

Compressor DC Inverter-driven Twin Rotary
 MCA 12 A
 Fan Motor 0.50 F.L.A.
 Sound Pressure Level
 Cooling 49 dB(A)

DIMENSIONS	INCHES / MM
W	31-1/2 / 800
D	11-1/4 / 286
H	21-5/8 / 549

Weight 80 lbs. / 37 kg
 External Finish Munsell No. 3Y 7.8 / 1.1

Refrigerant Type R410A
 Refrigerant Pipe Size O.D.

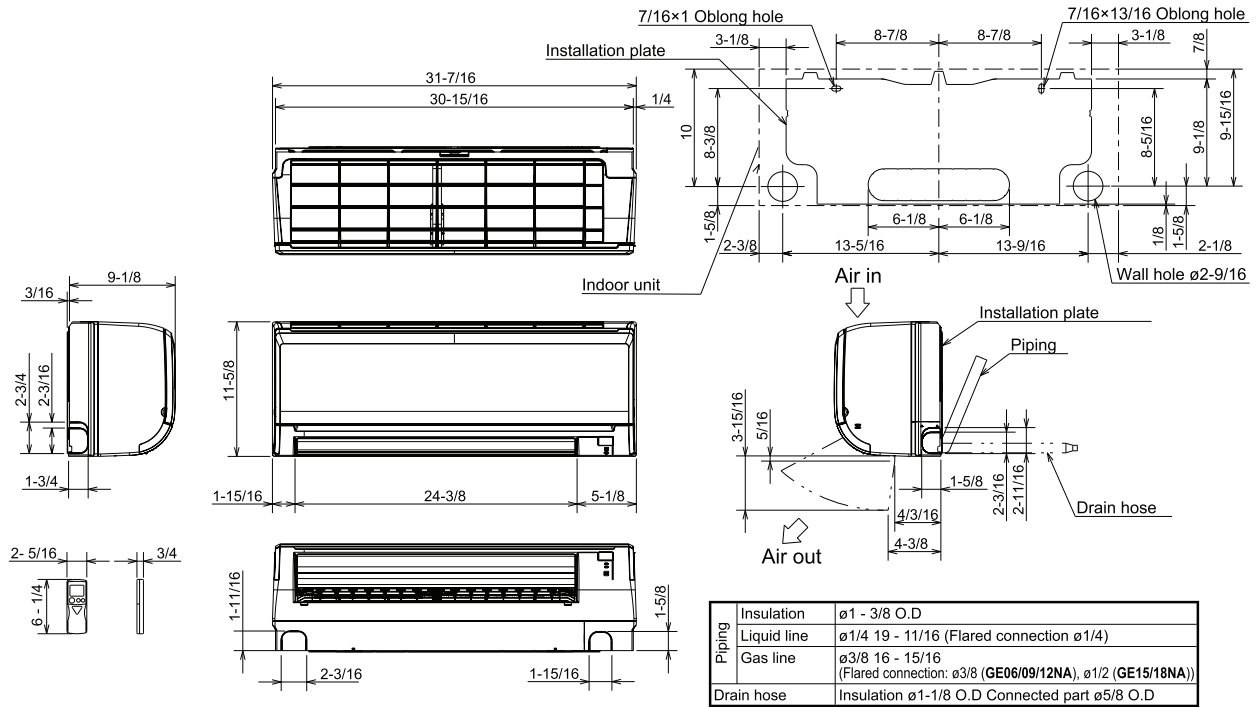
Gas Side 1/2" / 12.7 mm
 Liquid Side 1/4" / 6.35 mm
 Max. Refrigerant Pipe Length 65 ft. / 20 m
 Max. Refrigerant Pipe Height Difference 40 ft. / 12 m
 Connection Method Flared



DIMENSIONS: MSY-GE15NA & MUY-GE15NA

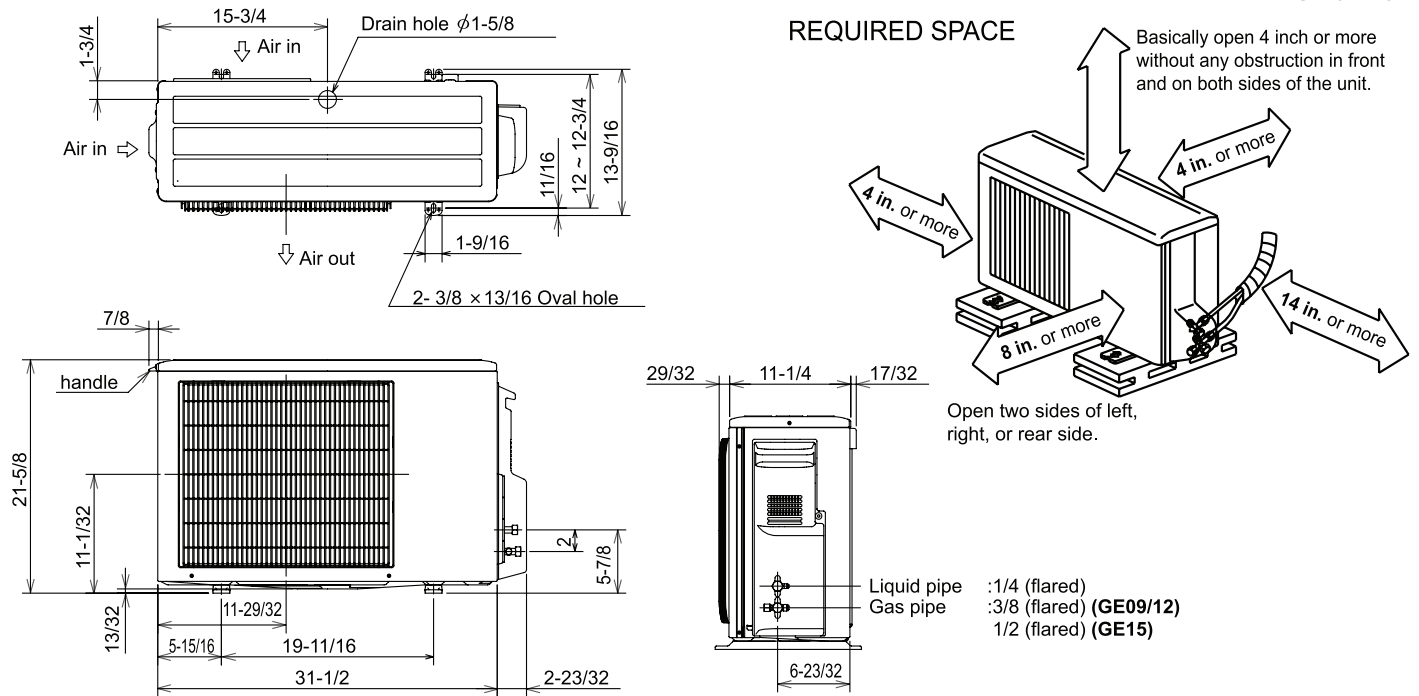
MSY-GE15NA

Unit: inch



MUY-GE15NA

Unit: inch



HVAC Advanced Products Division
 3400 Lawrenceville Suwanee Rd
 Suwanee, GA 30024
 Tele: 678-376-2900 • Fax: 800-889-9904
 Toll Free: 800-433-4822 (#3)
 www.mehvac.com
Specifications are subject to change without notice.

SUBMITTAL DATA: MSY-GE18NA & MUY-GE18NA

18,000 BTU/H WALL-MOUNTED AIR-CONDITIONING SYSTEMS

Job Name:	Location:	Date:
Purchaser:	Engineer:	
Submitted to:	For <input type="checkbox"/> Reference <input type="checkbox"/> Approval <input type="checkbox"/> Construction	
System Designation:	Schedule No.:	

GENERAL FEATURES

- Wall-mounted indoor unit
- Standard Hybrid Catechin Prefilter is included with indoor unit
- Quiet operation
- Choice of fan speeds: Quiet, Low, Medium, High, and Super High; Auto fan speed control also included
- Hand-held Wireless Remote Controller
- Indoor unit powered from outdoor unit using A-Control
- Auto restart following a power outage
- Anti-allergy Enzyme Filter
- Limited warranty: five years on parts and defects and seven years on the compressor

OPTIONAL ACCESSORIES
Outdoor Unit

- Drain Socket Assembly (MAC-811DS)

Indoor Unit

- Condensate Pump (230V; SI3100-230)

Controller Options

- Wall-mounted Wired Controller (PAR-21MAA; req. MAC-3971F)
- MA Contact Terminal Interface (MAC-3971F)
- M-NET Control Adapter (MAC-3991F)
- Remote Temperature Sensor (M21-JKO-307)
- Lockdown Bracket for Hand-held Controller (RCMKP1CB)

Cooling*

Rated Capacity 17,200 Btu/h
 Minimum Capacity 3,700 Btu/h
 SEER 19.2 Btu/h/W
 Total Input 1,640 W

* Rating Conditions (Cooling) - Indoor: 80°F (27°C) DB, 67°F (19°C) WB; Outdoor: 95°F (35°C) DB, 75°F (24°C) WB.

Electrical Requirements

Power Supply 208 / 230V, 1-Phase, 60 Hz
 Breaker Size 15 A

Voltage

Indoor - Outdoor S1-S2 AC 208 / 230V
 Indoor - Outdoor S2-S3 DC 12-24V
 Indoor - Remote Controller Wireless

OPERATING RANGE

		Indoor Intake Air Temp.	Outdoor Intake Air Temp.
Cooling	Maximum	90°F (32°C) DB, 73°F (23°C) WB	115°F (46°C) DB
	Minimum	67°F (19°C) DB, 57°F (14°C) WB	14°F (-10°C) DB



Indoor Unit: MSY-GE18NA



Outdoor Unit: MUY-GE18NA


 Wireless Remote
Controller

Indoor Unit

MCA 1 A
 Fan Motor 0.76 F.L.A.
 Airflow (Quiet - Lo - Med - Hi - Super Hi)
 Cooling 230 - 275 - 339 - 420 - 533 Dry CFM
 194 - 240 - 304 - 385 - 498 Wet CFM

Sound Pressure Level (Quiet - Lo - Med - Hi - Super Hi)

Cooling 28 - 33 - 38 - 44 - 49 dB(A)

DIMENSIONS	UNIT INCHES / MM
W	31-7/16 / 799
D	9-1/8 / 232
H	11-5/8 / 295

Weight 22 lbs. / 10 kg
 External Finish Munsell No. 1.0Y 9.2 / 0.2
 Field Drainpipe Size O.D. 5/8" / 15.88 mm

Outdoor Unit

Compressor DC Inverter-driven Twin Rotary
 MCA 14 A
 Fan Motor 0.93 F.L.A.
 Sound Pressure Level
 Cooling 54 dB(A)

DIMENSIONS	INCHES / MM
W	33-1/16 / 840
D	13 / 330
H	33-7/16 / 849

Weight 119 lbs. / 54 kg
 External Finish Munsell No. 3Y 7.8 / 1.1

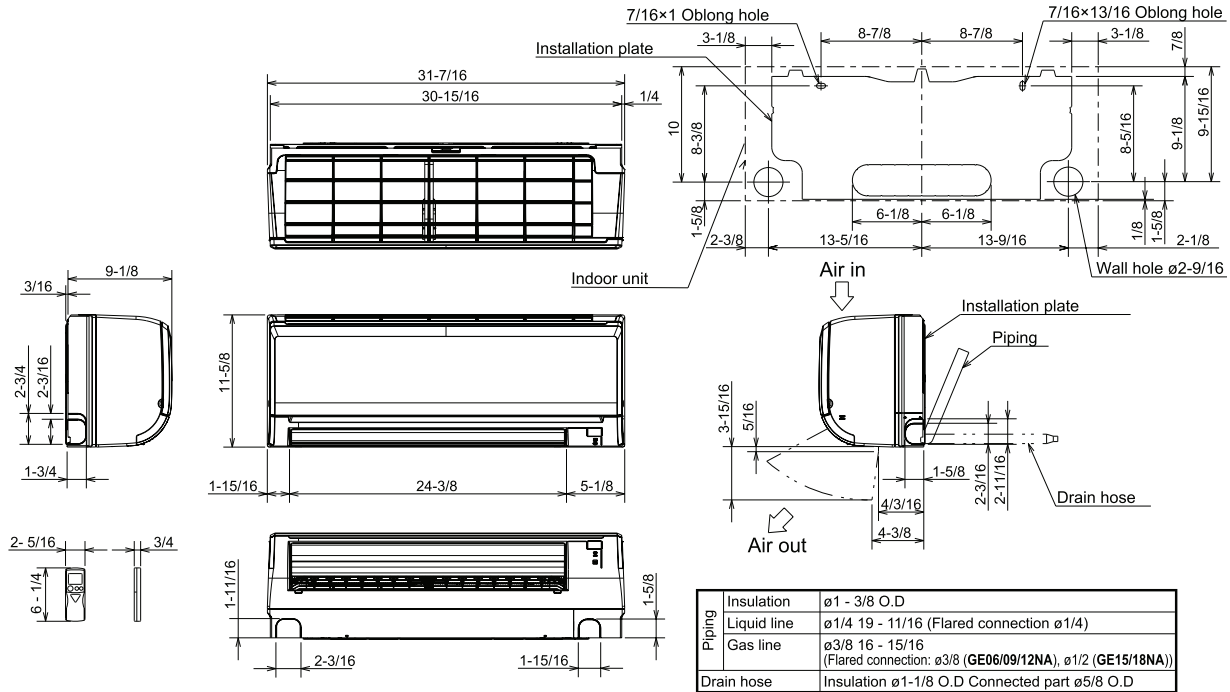
Refrigerant Type R410A
 Refrigerant Pipe Size O.D.
 Gas Side 1/2" / 12.7 mm
 Liquid Side 1/4" / 6.35 mm
 Max. Refrigerant Pipe Length 100 ft. / 30 m
 Max. Refrigerant Pipe Height Difference 50 ft. / 15 m
 Connection Method Flared



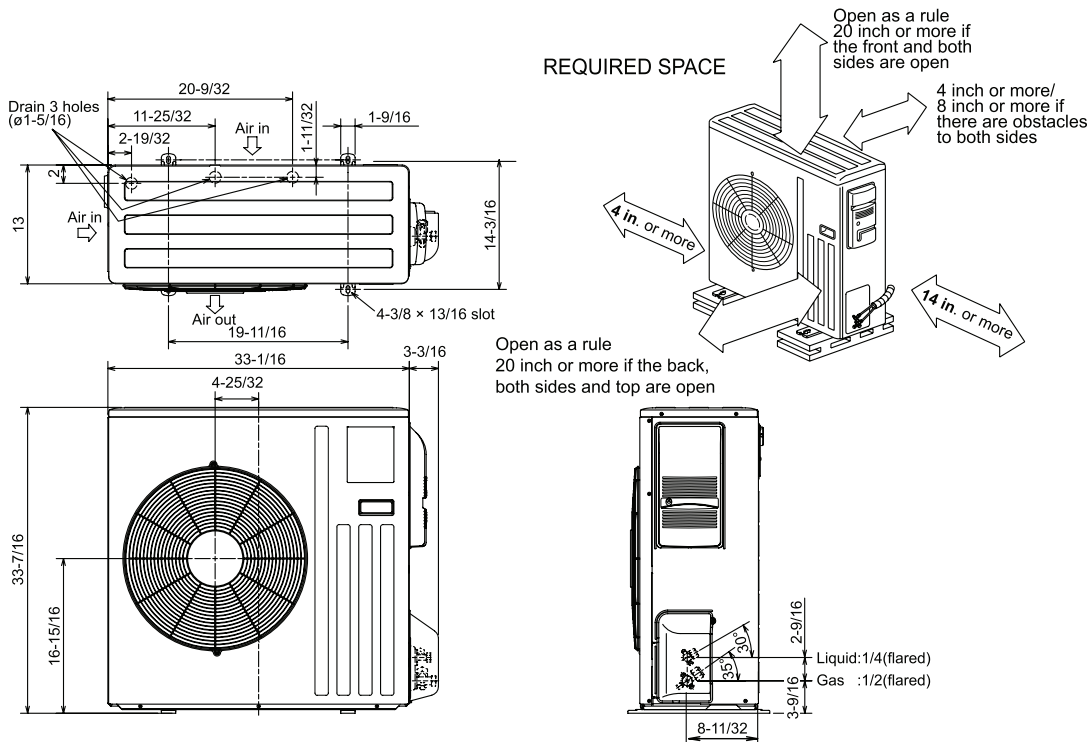
DIMENSIONS: MSY-GE18NA & MUY-GE18NA

MSY-GE18NA

Unit: inch



MUY-GE18NA



Intertek



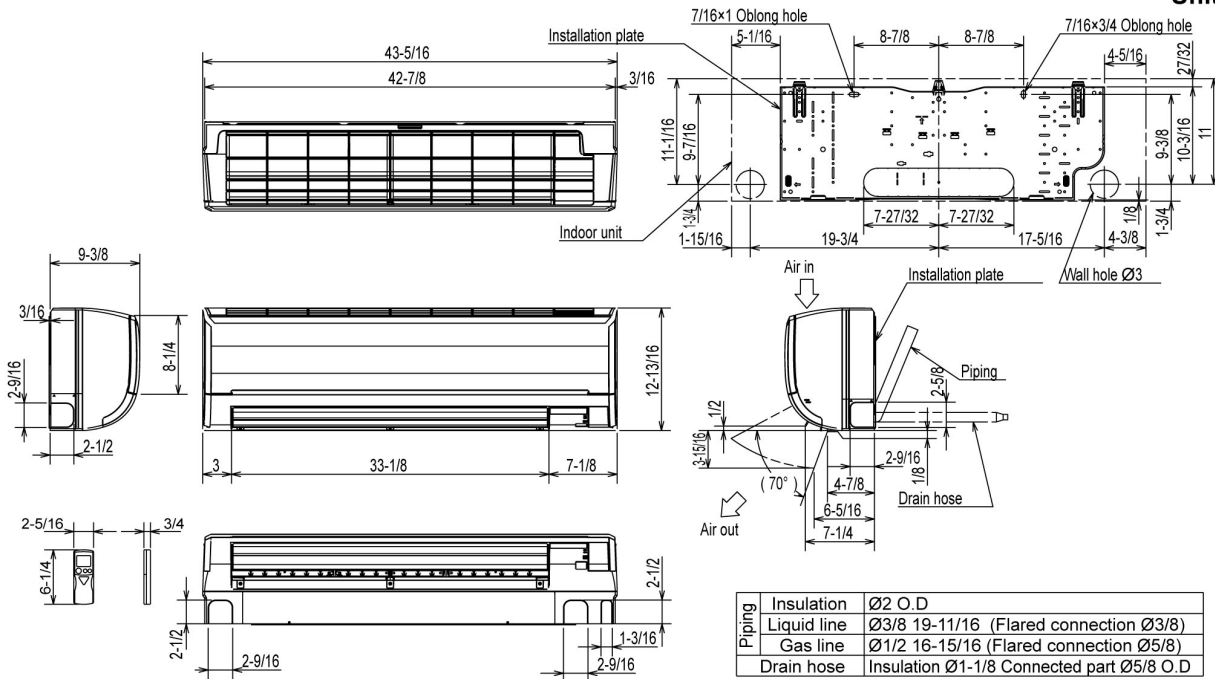
3400 Lawrenceville Suwanee Rd
 Suwanee, GA 30024
 Tele: 678-376-2900 • Fax: 800-889-9904
 Toll Free: 800-433-4822 (#3)
 www.mehvac.com

Specifications are subject to change without notice.

DIMENSIONS: MSY-GE24NA & MUY-GE24NA

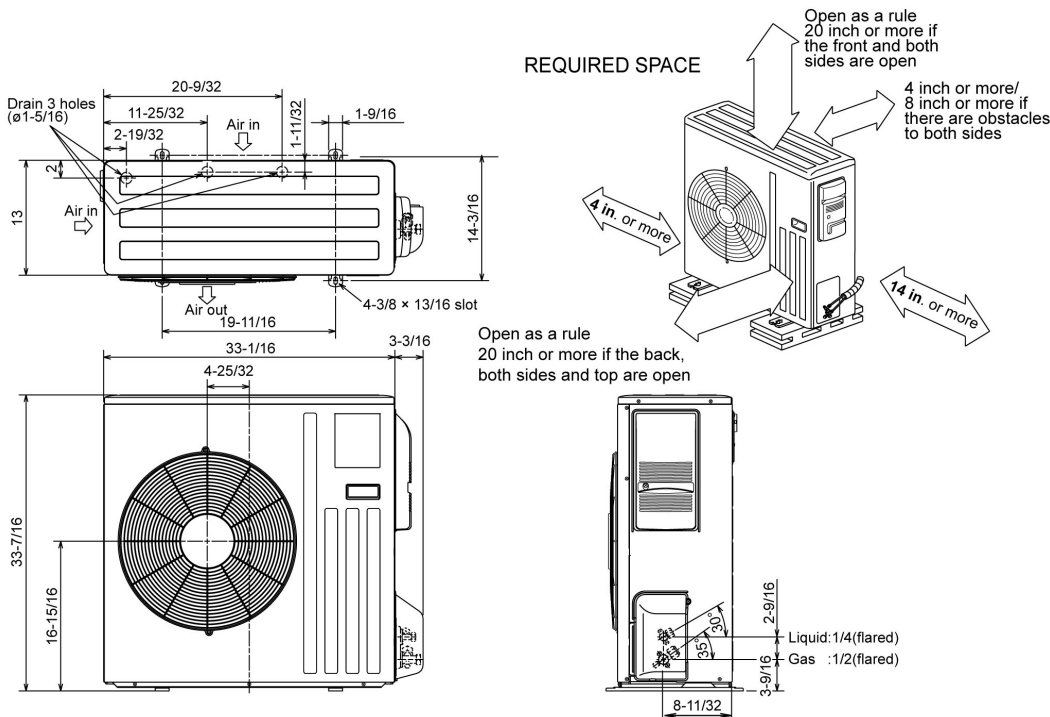
MSY-GE24NA

Unit: inch



MUY-GE24NA

Unit: inch



COOLING & HEATING

1340 Satellite Boulevard, Suwanee, GA 30024
Toll Free: 800-433-4822 www.mehvac.com



SUBMITTAL DATA: MSZ-GE06NA 6,000 BTU/H WALL-MOUNTED INDOOR UNIT FOR MXZ-B MULTI-ZONE HEAT-PUMP SYSTEMS

Job Name:	Location:	Date:
Purchaser:	Engineer:	
Submitted to:	For <input type="checkbox"/> Reference <input type="checkbox"/> Approval <input type="checkbox"/> Construction	
System Designation:	Schedule No.:	

GENERAL FEATURES

- Wall-mounted indoor unit
- Standard Hybrid Catechin Prefilter is included with indoor unit
- Quiet operation
- Choice of fan speeds: Quiet, Low, Medium, High, and Super High; Auto fan speed control also included
- Wireless remote controller is included; PAR-21MAA wired remote controller can be installed as an option
- Indoor unit powered from outdoor unit using A-Control
- Auto restart following a power outage
- Limited warranty: five years on parts and defects and seven years on compressors

OPTIONAL ACCESSORIES
Indoor Unit

- Condensate Pump (230V; SI3100-230)
- Anti-allergy Enzyme Filter (Two pieces per set; MAC-408FT-E)

Controller Options

- Wall-mounted Wired Remote Controller (PAR-21MAA requires MAC-397IF)
- MA Contact Terminal Interface (MAC-397IF)
- M-NET Control Adapter (MAC-399IF)
- Remote Temperature Sensor (M21-JKO-307)
- Lockdown Bracket for Handheld Controller (RCMKP1CB)

Cooling Capacity* 6,000 Btu/h

Heating Capacity* 7,200 Btu/h

* Rating Conditions (Cooling) - Indoor: 80°F (27°C) DB, 67°F (19°C) WB; Outdoor: 95°F (35°C) DB, 75°F (24°C) WB.
 (Heating at 47°F) - Indoor: 70°F (21°C) DB, 60°F (16°C) WB; Outdoor: 47°F (8°C) DB, 43°F (6°C) WB.
(For data on specific indoor units [all ducted, all non-ducted, and both ducted and non-ducted] combinations, see the MXZ-B Technical and Service Manual.)

Electrical Requirements

 Power Supply 208 / 230V, 1-Phase, 60 Hz
 MCA 1 A

Voltage

 Indoor - Outdoor S1-S2 AC 208 / 230V
 Indoor - Outdoor S2-S3 DC 12-24V

Fan Motor 0.76 F.L.A.



Indoor Unit: MSZ-GE06NA



Wireless Remote Controller

Airflow (Quiet - Lo - Med - Hi - Super Hi)

 Cooling 145 - 170 - 237 - 321 - 399 Dry CFM
 109 - 134 - 201 - 286 - 364 Wet CFM
 Heating 145 - 170 - 233 - 321 - 406 CFM

Sound Pressure Level (Quiet - Lo - Med - Hi - Super Hi)

 Cooling 19 - 22 - 30 - 37 - 43 dB(A)
 Heating 19 - 22 - 30 - 37 - 43 dB(A)

DIMENSIONS	UNIT INCHES / MM
W	31-7/16 / 799
D	9-1/8 / 232
H	11-5/8 / 295

 Weight 22 lbs. / 10 kg
 External Finish Munsell No. 1.0Y 9.2 / 0.2
 Field Drainpipe Size O.D. 5/8" / 15.88 mm

Refrigerant Type R410A

Refrigerant Pipe Size O.D.

 Gas Side 3/8" / 9.52 mm
 Liquid Side 1/4" / 6.35 mm
 Connection Method Flared

MXZ-B SERIES HEAT-PUMP OUTDOOR UNITS

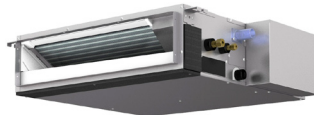

Outdoor Unit: MXZ-4B36NA

MXZ-B MULTI-ZONE SYSTEMS CAN INCLUDE:

- Ducted Indoor Units:
SEZ-KD09,12,15,18NA, PEAD-A24AA
 - Nonducted Indoor Units:
**MSZ-GE06,09,12,15,18,24NA,
 MSZ-FE09,12,18NA, MFZ-KA09,12,18NA,
 PCA-A24KA, SLZ-KA09,12,15NA, and
 PLA-A12,18,24BA**
 - A combination of both Ducted and Nonducted Indoor Units
- Refer to the separate submittal forms for the MSZ-GE, MSZ-FE, MFZ-KA, SEZ-KD, SLZ-KA, PEAD, PCA, PLA Indoor Units, and MXZ Outdoor Units.



MSZ-GE



SEZ-KD and PEAD-A24



MSZ-FE



MFZ-KA



PCA-KA

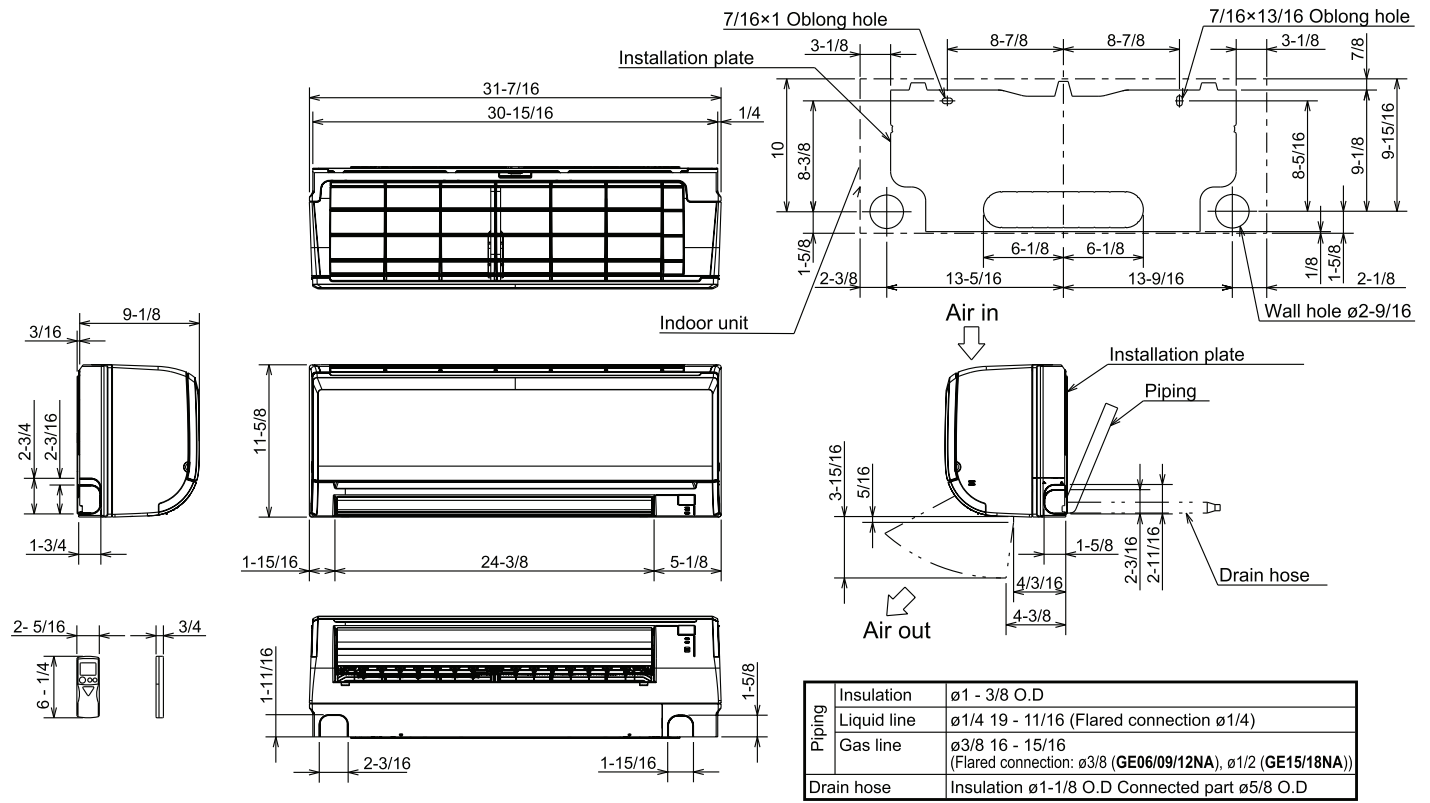


SLZ-KA and PLA-ABA



DIMENSIONS: MSZ-GE06NA

Unit: inch



HVAC Advanced Products Division
3400 Lawrenceville Suwanee Rd
Suwanee, GA 30024
Tele: 678-376-2900 • Fax: 800-889-9904
Toll Free: 800-433-4822 (#3)
www.mehvac.com