

2- TO 5-TON PACKAGED AIR CONDITIONER 13 SEER

Cooling Capacity:
24,000 - 57,500 BTU/h

■ Standard Features

- Energy-efficient compressor with internal relief valve
- PSC blower motor; EEM blower motor on 5-ton units
- Quiet horizontal discharge
- Copper tube / aluminum fin condenser coil
- Totally enclosed, permanently lubricated condenser fan motor
- Fully charged system
- 5 kW to 20 kW electric heat kit available as a field-installed option
- AHRI Certified; ETL Listed

■ Cabinet Features

- Heavy-gauge galvanized-steel cabinet with attractive Nickel Gray powder-paint finish
- Fully insulated blower compartment with convenient access panels
- Louvered condenser coil protection
- One footprint; three heights

■ Contents

Nomenclature.....	2
Accessories	2
Product Specifications.....	3
Expanded Cooling Data	4
Airflow Data.....	16
Heater Kit Data	17
Dimensions	18
Wiring Diagrams.....	19



* Complete warranty details available from your local dealer or at www.daikincomfort.com. To receive the 12-Year Parts Limited Warranty, online registration must be completed within 60 days of installation. Online registration is not required in California or Quebec.

NOMENCLATURE

	D	P	13	C	H	36	4	1	A	*	
	1	2	3,4	5	6	7,8	9	10	11	12	
Brand D - Daikin											Engineering Minor revision
Product Type P - Packaged											Engineering Major revision
SEER 13 - 13 SEER 14 - Up to 14 SEER 15 - Up to 15 SEER											Voltage 1 - 208/230V, 1-phase, 60 Hz 3 - 208/230V, 3-phase, 60 Hz
Unit Type H - Heat Pump C - Air Conditioner											Refrigerant 4 - R-410A
Configuration M - Multi-position H - Horizontal											Tonnage Nominal 24 - 2 Tons 42 - 3½ Tons 30 - 2½ Tons 48 - 4 Tons 36 - 3 Tons 60 - 5 Tons

ACCESSORIES

ACCESSORY DESCRIPTION	ITEM NUMBER		
	SMALL CHASSIS	MEDIUM CHASSIS	LARGE CHASSIS
Downflow Economizer	DDNECNJPCHA	DDNECNJPCHA	DDNECNJPCHA
Downflow Plenum Kit	PCP101	PCP102	PCP103
Downflow Plenum Kit (R-8)	PCP101 R8	PCP102 R8	PCP103 R8
Elbow Flashing w/ R-8 Liner	PCEF101	PCEF102	PCEF103
Emergency Heat Relay	OT/EHR18-60	OT/EHR18-60	OT/EHR18-60
External Horizontal Filter Rack	DPHFRA	DPHFRA	DPHFRA
Horizontal Economizer	DHZECNJPGCHM	DHZECNJPGCHM	DHZECNJPGCHL
Horizontal Manual Damper	PCMD101	PCMD102	PCMD103
Horizontal Motorized Damper	PCMDM101	PCMDM102	PCMDM103
Outdoor Thermostat w/ Lockout Stat	OT18-60A	OT18-60A	OT18-60A
Horizontal Square-to-Round	SQRPCH101	SQRPCH102	SQRPCH103
Square-to-Round	SQRPC101	SQRPC102	SQRPC103

SPECIFICATIONS

	DP13CH 2441A*	DP13CH 3041A*	DP13CH 3641A*	DP13CH 4241A*	DP13CH 4941A*	DP13CH 6041A*
COOLING CAPACITY						
Total BTU/h	22,800	28,600	36,000	41,000	45,500	57,500
Sensible BTU/h	17,100	22,700	26,000	31,600	34,700	43,000
SEER / EER	13.0 / 11.0	13.0 / 11.0	13.0 / 11.0	13.0 / 11.0	13.0 / 11.0	13.0 / 11.0
Decibels	76	76	78	78	80	80
AHRI #	6683024	6683025	6683026	6683027	6683028	6683029
EVAPORATOR MOTOR						
Type	PSC	PSC	PSC	PSC	PSC	EEM
Wheel (D x W)	9 x 6	9 x 6	9 x 8	10 x 8	10 x 8	11 x 8
Nominal Cooling CFM	850	1,050	1,200	1,400	1,600	1,900
RLA / LRA	1.5 / 2.2	1.86 / 3.2	1.86 / 3.2	2.87 / 4.9	2.87 / 4.9	5.8 / 8.0
No. of Speeds	3	3	3	3	3	3
Horsepower - RPM	¼ - 952	⅓ - 1,020	⅓ - 1,020	½ - 1,005	½ - 1,005	¾ - 1,250
EVAPORATOR COIL						
Face Area (ft ²)	4.66	4.66	5.25	6.20	6.20	7.00
Rows Deep / Fins per Inch	3 / 14	3 / 14	3 / 14	4 / 14	4 / 14	4 / 14
Filter Size (")	20 x 20 x 1	20 x 25 x 1	25 x 25 x 1	(2) 20x20x1	(2) 20x20x1	(2) 20x25x1
All-Aluminum Coil	X	X	X	X	X	X
Drain Size (NPT)	¾"	¾"	¾"	¾"	¾"	¾"
Refrigerant Charge (oz.)	63	62	61	88	80	93
CONDENSER FAN / COIL						
Horsepower - RPM	⅙ - 815	⅙ - 815	¼ - 830	¼ - 1,075	¼ - 1,075	¼ - 1,075
RLA / LRA	1.1 / 1.7	1.1 / 1.7	1.5 / 3.0	1.4 / 2.9	1.4 / 2.9	1.4 / 2.9
Fan Diameter / # Fan Blades	22 / 2	22 / 2	22 / 4	22 / 4	22 / 4	22 / 4
Face Area (ft ²)	12.3	12.3	12.3	16	16	19.5
Rows Deep / Fins per Inch	1 / 27	1 / 27	1 / 27	1 / 27	1 / 27	1 / 27
COMPRESSOR						
Quantity / Type	1 / Scroll	1 / Scroll	1 / Scroll	1 / Scroll	1 / Scroll	1 / Scroll
Stage	Single	Single	Single	Single	Single	Single
Compressor RLA / LRA	13.5 / 58.3	12.8 / 64	16.7 / 79	17.9 / 112	19.9 / 109	26.4 / 134
ELECTRICAL DATA						
Voltage-Phase (60 Hz)	208-230/ 1	208-230/ 1	208-230/ 1	208-230/ 1	208-230/ 1	208-230/ 1
Indoor Blower FLA	1.5	1.86	1.86	2.87	2.87	5.8
Outdoor Fan RLA	1.1	1.1	1.5	1.4	1.4	1.4
Total Unit Amps	16.1	15.76	20.06	22.2	24.17	33.6
Min. Circuit Ampacity ¹	19.5	19	24.2	26.6	29.2	40.2
Max. Overcurrent Protection (amps) ²	30	30	40	40	45	60
SHIP WEIGHT (LBS)	305	305	320	375	375	375

¹ Wire size should be determined in accordance with National Electrical Codes. Extensive wire runs will require larger wire sizes.

² May use fuses or HACR-type circuit breakers of the same size as noted.

Note: Always check the S&R plate for electrical data on the unit being installed.

EXPANDED COOLING DATA — DP13CH2441**

IDB	AIRFLOW	OUTDOOR AMBIENT TEMPERATURE																															
		65°F					75°F					85°F					95°F					105°F					115°F						
		59	63	67	71	75	59	63	67	71	75	59	63	67	71	75	59	63	67	71	75	59	63	67	71	75	59	63	67	71	75		
70	MBh	23.2	24.0	26.3	-	22.6	23.5	25.7	-	22.1	22.9	25.1	-	21.6	22.3	24.5	-	20.5	21.2	23.3	-	19.0	19.7	21.5	-	20.5	21.2	23.3	-	19.0	19.7	21.5	-
	S/T	1.00	1.00	1.00	-	1.00	1.00	1.00	-	1.00	1.00	1.00	-	1.00	1.00	1.00	-	1.00	1.00	1.00	-	1.00	1.00	1.00	-	1.00	1.00	1.00	-	1.00	1.00	1.00	-
	ΔT	22	23	25	-	22	23	25	-	21	22	24	-	21	22	24	-	20	21	23	-	18	19	21	-	20	21	23	-	18	19	21	-
	kW	1.63	1.67	1.72	-	1.75	1.79	1.84	-	1.86	1.90	1.96	-	1.95	1.99	2.06	-	2.03	2.07	2.14	-	2.10	2.14	2.21	-	2.03	2.07	2.14	-	2.10	2.14	2.21	-
950	Amps	7.1	7.2	7.4	-	7.6	7.7	7.9	-	8.1	8.3	8.5	-	8.6	8.8	9.0	-	9.0	9.2	9.5	-	9.5	9.7	10.0	-	9.0	9.2	9.5	-	9.5	9.7	10.0	-
	Hi PR	217	234	247	-	244	263	277	-	278	299	315	-	316	340	359	-	356	383	404	-	393	423	447	-	356	383	404	-	393	423	447	-
	Lo PR	110	117	127	-	116	123	135	-	121	128	140	-	127	135	147	-	133	141	154	-	137	146	159	-	133	141	154	-	137	146	159	-
	MBh	22.8	23.7	25.9	-	22.3	23.1	25.3	-	21.8	22.6	24.7	-	21.2	22.0	24.1	-	20.2	20.9	22.9	-	18.7	19.4	21.2	-	20.2	20.9	22.9	-	18.7	19.4	21.2	-
850	S/T	1.00	1.00	1.00	-	1.00	1.00	1.00	-	1.00	1.00	1.00	-	1.00	1.00	1.00	-	1.00	1.00	1.00	-	1.00	1.00	1.00	-	1.00	1.00	1.00	-	1.00	1.00	1.00	-
	ΔT	25	26	28	-	24	25	27	-	24	24	27	-	23	24	26	-	22	23	25	-	20	21	23	-	22	23	25	-	20	21	23	-
	kW	1.63	1.66	1.71	-	1.74	1.78	1.83	-	1.85	1.89	1.95	-	1.94	1.98	2.04	-	2.02	2.06	2.13	-	2.09	2.13	2.20	-	2.02	2.06	2.13	-	2.09	2.13	2.20	-
	Amps	7.0	7.2	7.4	-	7.5	7.7	7.9	-	8.1	8.2	8.5	-	8.5	8.7	9.0	-	9.0	9.2	9.5	-	9.5	9.7	9.9	-	9.0	9.2	9.5	-	9.5	9.7	9.9	-
750	Hi PR	216	232	245	-	242	261	275	-	276	297	313	-	314	338	357	-	353	380	401	-	390	420	443	-	353	380	401	-	390	420	443	-
	Lo PR	109	116	127	-	115	123	134	-	120	127	139	-	126	134	146	-	132	140	153	-	136	145	158	-	132	140	153	-	136	145	158	-
	MBh	21.7	22.5	24.6	-	21.2	22.0	24.1	-	20.7	21.4	23.5	-	20.2	20.9	22.9	-	19.2	19.9	21.8	-	17.8	18.4	20.2	-	19.2	19.9	21.8	-	17.8	18.4	20.2	-
	S/T	1.00	1.00	1.00	-	1.00	1.00	1.00	-	1.00	1.00	1.00	-	1.00	1.00	1.00	-	1.00	1.00	1.00	-	1.00	1.00	1.00	-	1.00	1.00	1.00	-	1.00	1.00	1.00	-
75	ΔT	27	28	30	-	26	27	29	-	25	26	29	-	25	26	28	-	23	24	27	-	20	21	23	-	23	24	27	-	20	21	23	-
	kW	1.65	1.68	1.73	1.78	1.77	1.80	1.86	1.92	1.87	1.91	1.97	2.04	1.97	2.01	2.07	2.14	2.05	2.09	2.16	2.23	2.12	2.16	2.23	2.30	2.05	2.09	2.16	2.23	2.12	2.16	2.23	2.30
	Amps	7.1	7.3	7.5	7.7	7.6	7.8	8.0	8.2	8.2	8.3	8.6	8.8	8.6	8.8	9.1	9.4	9.1	9.3	9.6	9.9	9.6	9.8	10.1	10.4	9.1	9.3	9.6	9.9	9.6	9.8	10.1	10.4
	Hi PR	220	236	250	260	247	265	280	292	280	302	319	332	319	344	363	378	359	387	408	426	397	427	451	470	359	387	408	426	397	427	451	470
950	Lo PR	111	118	129	137	117	125	136	145	122	130	141	151	128	136	149	158	134	143	156	166	139	147	161	171	134	143	156	166	139	147	161	171
	MBh	23.2	23.9	25.9	27.8	22.7	23.4	25.3	27.1	22.1	22.8	24.7	26.5	21.6	22.2	24.1	25.8	20.5	21.1	22.9	24.5	19.3	19.9	21.5	23.1	20.5	21.1	22.9	24.5	19.3	19.9	21.5	23.1
	S/T	1.00	1.00	1.00	1.00	1.00	1.00	1.00	1.00	1.00	1.00	1.00	1.00	1.00	1.00	1.00	1.00	1.00	1.00	1.00	1.00	1.00	1.00	1.00	1.00	1.00	1.00	1.00	1.00	1.00	1.00	1.00	
	ΔT	25	26	28	30	25	25	27	29	24	25	27	29	23	24	26	28	22	23	25	27	21	21	23	25	22	23	25	27	21	21	23	25
850	kW	1.64	1.67	1.72	1.77	1.76	1.79	1.85	1.91	1.86	1.90	1.96	2.02	1.96	2.00	2.06	2.13	2.04	2.08	2.15	2.22	2.10	2.15	2.22	2.29	2.04	2.08	2.15	2.22	2.10	2.15	2.22	2.29
	Amps	7.1	7.2	7.4	7.7	7.6	7.7	7.9	8.2	8.1	8.3	8.5	8.8	8.6	8.8	9.0	9.3	9.1	9.3	9.5	9.8	9.5	9.7	10.0	10.4	9.1	9.3	9.5	9.8	9.5	9.7	10.0	10.4
	Hi PR	218	235	248	259	245	263	278	290	278	300	316	330	317	341	360	376	357	384	405	423	394	424	448	467	357	384	405	423	394	424	448	467
	Lo PR	110	117	128	136	116	124	135	144	121	129	140	150	127	135	148	157	133	142	155	165	138	146	160	170	133	142	155	165	138	146	160	170
750	MBh	22.1	22.7	24.6	26.4	21.5	22.2	24.0	25.8	21.0	21.7	23.4	25.2	20.5	21.1	22.9	24.5	19.5	20.1	21.7	23.3	18.1	18.6	20.1	21.6	19.5	20.1	21.7	23.3	18.1	18.6	20.1	21.6
	S/T	1.00	1.00	1.00	1.00	1.00	1.00	1.00	1.00	1.00	1.00	1.00	1.00	1.00	1.00	1.00	1.00	1.00	1.00	1.00	1.00	1.00	1.00	1.00	1.00	1.00	1.00	1.00	1.00	1.00	1.00	1.00	
	ΔT	27	28	30	32	26	27	29	32	26	27	29	31	25	26	28	30	24	25	27	29	22	23	25	26	24	25	27	29	22	23	25	26
	kW	1.61	1.65	1.69	1.75	1.73	1.77	1.82	1.88	1.83	1.87	1.93	1.99	1.93	1.97	2.03	2.09	2.00	2.05	2.11	2.18	2.07	2.11	2.18	2.25	2.00	2.05	2.11	2.18	2.07	2.11	2.18	2.25
75	Amps	7.0	7.1	7.3	7.6	7.5	7.6	7.8	8.1	8.0	8.2	8.4	8.7	8.5	8.6	8.9	9.2	8.9	9.1	9.4	9.7	9.4	9.6	9.9	10.2	8.9	9.1	9.4	9.7	9.4	9.6	9.9	10.2
	Hi PR	214	230	243	253	240	258	273	284	273	294	310	323	311	334	353	368	350	376	397	414	386	416	439	458	350	376	397	414	386	416	439	458
	Lo PR	108	115	125	133	114	121	132	141	118	126	138	147	124	132	145	154	130	139	151	161	135	144	157	167	130	139	151	161	135	144	157	167
	MBh	22.1	22.7	24.6	26.4	21.5	22.2	24.0	25.8	21.0	21.7	23.4	25.2	20.5	21.1	22.9	24.5	19.5	20.1	21.7	23.3	18.1	18.6	20.1	21.6	19.5	20.1	21.7	23.3	18.1	18.6	20.1	21.6

Shaded area reflects ACCA (TVA) conditions

High and low pressures are measured at the liquid and suction access fittings.

IDB: Entering Indoor Dry Bulb Temperature
 kW = Total system power
 Amps: Unit amps (compressor+ evaporator + condenser fan motors).

EXPANDED COOLING DATA — DP13CH2441** (CONT.)

IDB	AIRFLOW	OUTDOOR AMBIENT TEMPERATURE												ENTERING INDOOR WET BULB TEMPERATURE											
		65°F				75°F				85°F				95°F				105°F				115°F			
		59	63	67	71	59	63	67	71	59	63	67	71	59	63	67	71	59	63	67	71	59	63	67	71
950	MBh	24.0	24.5	26.2	28.0	23.4	23.9	25.6	27.3	22.9	23.4	25.0	26.7	22.3	22.8	24.4	26.0	21.2	21.7	23.1	24.7	19.6	20.1	21.4	22.9
	S/T	1.00	1.00	1.00	1.00	1.00	1.00	1.00	1.00	1.00	1.00	1.00	1.00	1.00	1.00	1.00	1.00	1.00	1.00	1.00	1.00	1.00	1.00	1.00	1.00
	ΔT	23	24	25	27	23	23	25	26	22	22	23	24	22	22	22	24	21	21	21	22	21	19	19	22
	kW	1.66	1.69	1.74	1.80	1.78	1.82	1.87	1.93	1.89	1.93	1.99	2.05	1.98	2.03	2.09	2.16	2.06	2.11	2.18	2.25	2.13	2.18	2.25	2.32
	Amps	7.2	7.3	7.5	7.8	7.7	7.8	8.0	8.3	8.2	8.4	8.6	8.9	8.7	8.9	9.2	9.5	9.2	9.4	9.7	10.0	9.7	9.9	10.2	10.5
80	Hi PR	222	239	252	263	249	268	283	295	283	305	322	336	323	347	367	382	363	391	412	430	401	431	456	475
	Lo PR	112	119	130	139	118	126	137	146	123	131	143	152	129	137	150	160	135	144	157	167	140	149	163	173
	MBh	23.6	24.1	25.8	27.6	23.1	23.6	25.2	26.9	22.5	23.0	24.6	26.3	22.0	22.5	24.0	25.7	20.9	21.3	22.8	24.4	19.3	19.8	21.1	22.6
	S/T	1.00	1.00	1.00	1.00	1.00	1.00	1.00	1.00	1.00	1.00	1.00	1.00	1.00	1.00	1.00	1.00	1.00	1.00	1.00	1.00	1.00	1.00	1.00	1.00
	ΔT	26	26	28	30	25	26	27	29	24	25	27	28	24	24	26	28	23	23	25	26	21	21	23	24
750	kW	1.65	1.68	1.73	1.79	1.77	1.81	1.86	1.92	1.88	1.92	1.98	2.04	1.97	2.01	2.08	2.15	2.05	2.10	2.16	2.23	2.12	2.17	2.24	2.31
	Amps	7.2	7.3	7.5	7.7	7.6	7.8	8.0	8.3	8.2	8.4	8.6	8.9	8.7	8.8	9.1	9.4	9.1	9.3	9.6	9.9	9.6	9.8	10.1	10.4
	Hi PR	220	237	250	261	247	266	281	293	281	303	320	333	320	345	364	380	360	388	410	427	398	428	452	472
	Lo PR	111	118	129	138	118	125	136	145	122	130	142	151	128	136	149	159	134	143	156	166	139	148	162	172
	MBh	22.5	22.9	24.5	26.2	21.9	22.4	23.9	25.6	21.4	21.9	23.4	25.0	20.9	21.3	22.8	24.4	19.8	20.3	21.7	23.2	18.4	18.8	20.1	21.4
85	S/T	1.00	1.00	1.00	1.00	1.00	1.00	1.00	1.00	1.00	1.00	1.00	1.00	1.00	1.00	1.00	1.00	1.00	1.00	1.00	1.00	1.00	1.00	1.00	1.00
	ΔT	28	28	30	32	27	27	29	31	26	27	29	31	26	26	28	30	24	25	27	28	23	23	25	26
	kW	1.67	1.71	1.76	1.81	1.79	1.83	1.89	1.95	1.90	1.94	2.00	2.07	2.00	2.04	2.11	2.17	2.08	2.13	2.19	2.27	2.15	2.20	2.27	2.34
	Amps	7.2	7.4	7.6	7.8	7.7	7.9	8.1	8.4	8.3	8.5	8.7	9.0	8.8	9.0	9.2	9.5	9.3	9.5	9.7	10.1	9.7	10.0	10.3	10.6
	Hi PR	224	241	255	266	252	271	286	298	286	308	325	339	326	351	370	386	367	394	416	434	405	436	460	480
750	Lo PR	113	120	131	140	120	127	139	148	124	132	144	154	130	139	152	161	137	145	159	169	141	150	164	175
	MBh	24.0	24.5	25.7	27.4	23.5	23.9	25.1	26.8	22.9	23.4	24.5	26.1	22.4	22.8	23.9	25.5	21.2	21.7	22.7	24.2	19.7	20.1	21.0	22.4
	S/T	1.00	1.00	1.00	1.00	1.00	1.00	1.00	1.00	1.00	1.00	1.00	1.00	1.00	1.00	1.00	1.00	1.00	1.00	1.00	1.00	1.00	1.00	1.00	1.00
	ΔT	26	27	28	30	25	26	27	29	25	25	26	28	24	25	26	28	23	23	25	26	21	22	23	24
	kW	1.66	1.70	1.75	1.80	1.79	1.82	1.88	1.94	1.89	1.93	1.99	2.06	1.99	2.03	2.09	2.16	2.07	2.11	2.18	2.25	2.14	2.19	2.26	2.33
850	Amps	7.2	7.4	7.6	7.8	7.7	7.8	8.1	8.3	8.3	8.4	8.7	8.9	8.7	8.9	9.2	9.5	9.2	9.4	9.7	10.0	9.7	9.9	10.2	10.5
	Hi PR	223	240	253	264	250	269	284	296	284	306	323	337	324	348	368	383	364	392	414	431	402	433	457	477
	Lo PR	112	120	130	139	119	126	138	147	123	131	143	153	130	138	150	160	136	144	158	168	140	149	163	174
	MBh	22.8	23.3	24.4	26.0	22.3	22.7	23.8	25.4	21.8	22.2	23.3	24.8	21.2	21.7	22.7	24.2	20.2	20.6	21.6	23.0	18.7	19.1	20.0	21.3
	S/T	1.00	1.00	1.00	1.00	1.00	1.00	1.00	1.00	1.00	1.00	1.00	1.00	1.00	1.00	1.00	1.00	1.00	1.00	1.00	1.00	1.00	1.00	1.00	1.00
750	ΔT	28	29	30	32	27	28	29	31	27	27	29	30	26	27	28	30	25	25	26	28	23	23	24	26
	kW	1.64	1.67	1.72	1.77	1.76	1.79	1.85	1.91	1.86	1.90	1.96	2.02	1.96	2.00	2.06	2.13	2.04	2.08	2.15	2.22	2.10	2.15	2.22	2.29
	Amps	7.1	7.2	7.4	7.7	7.6	7.7	7.9	8.2	8.1	8.3	8.5	8.8	8.6	8.8	9.0	9.3	9.1	9.3	9.5	9.8	9.5	9.7	10.0	10.4
	Hi PR	218	235	248	259	245	263	278	290	278	300	316	330	317	341	360	376	357	384	405	423	394	424	448	467
	Lo PR	110	117	128	136	116	124	135	144	121	129	140	150	127	135	147	157	133	142	155	165	138	146	160	170

kW = Total system power
Amps: Unit amps (compressor+ evaporator + condenser fan motors).

Shaded area reflects AHRI (TVA) conditions.

IDB: Entering Indoor Dry Bulb Temperature
High and low pressures are measured at the liquid and suction access fittings.

EXPANDED COOLING DATA — DP13CH3041* * *

IDB	AIRFLOW	OUTDOOR AMBIENT TEMPERATURE												115°F																	
		65°F						75°F						85°F						95°F						105°F					
		59	63	67	71	75	79	59	63	67	71	75	79	59	63	67	71	75	79	59	63	67	71	75	79	59	63	67	71	75	79
70	1180	MBh	28.0	29.0	31.8	-	27.4	28.4	31.1	-	26.7	27.7	30.3	-	26.1	27.0	29.6	-	24.8	25.7	28.1	-	22.9	23.8	26.1	-					
		S/T	0.76	0.64	0.44	-	0.79	0.66	0.46	-	0.81	0.68	0.47	-	0.84	0.70	0.48	-	0.87	0.72	0.50	-	0.87	0.73	0.51	-					
	ΔT	17	14	11	-	17	15	11	-	17	15	11	-	17	15	11	-	17	14	11	-	16	14	10	-						
	kW	2.04	2.08	2.14	-	2.19	2.23	2.30	-	2.32	2.37	2.44	-	2.44	2.49	2.57	-	2.54	2.59	2.67	-	2.62	2.68	2.76	-						
	Amps	8.8	9.0	9.2	-	9.4	9.6	9.8	-	10.0	10.3	10.5	-	10.6	10.8	11.1	-	11.2	11.4	11.7	-	11.8	12.0	12.3	-						
	Hi PR	226	243	256	-	253	272	288	-	288	310	327	-	328	353	373	-	369	397	419	-	408	439	463	-						
	Lo PR	109	116	127	-	116	123	134	-	120	128	139	-	126	134	146	-	132	141	154	-	137	145	159	-						
	70	1050	MBh	27.2	28.2	30.9	-	26.6	27.5	30.2	-	25.9	26.9	29.5	-	25.3	26.2	28.7	-	24.0	24.9	27.3	-	22.3	23.1	25.3	-				
	S/T	0.73	0.61	0.42	-	0.75	0.63	0.44	-	0.77	0.64	0.45	-	0.80	0.67	0.46	-	0.83	0.69	0.48	-	0.83	0.70	0.48	-						
	ΔT	17	15	11	-	18	15	12	-	18	15	12	-	18	15	12	-	17	15	11	-	16	14	11	-						
kW	2.02	2.06	2.13	-	2.17	2.22	2.28	-	2.30	2.35	2.42	-	2.42	2.47	2.55	-	2.52	2.57	2.65	-	2.60	2.66	2.74	-							
Amps	8.8	8.9	9.2	-	9.3	9.5	9.8	-	10.0	10.2	10.5	-	10.5	10.8	11.1	-	11.1	11.3	11.7	-	11.7	11.9	12.2	-							
Hi PR	223	240	254	-	251	270	285	-	285	307	324	-	325	349	369	-	365	393	415	-	404	434	459	-							
Lo PR	108	115	126	-	114	122	133	-	119	126	138	-	125	133	145	-	131	139	152	-	135	144	157	-							
920	920	MBh	25.1	26.0	28.5	-	24.5	25.4	27.9	-	23.9	24.8	27.2	-	23.4	24.2	26.5	-	22.2	23.0	25.2	-	20.6	21.3	23.3	-					
S/T	0.70	0.58	0.41	-	0.73	0.61	0.42	-	0.74	0.62	0.43	-	0.77	0.64	0.44	-	0.80	0.67	0.46	-	0.80	0.67	0.47	-							
ΔT	18	15	12	-	18	15	12	-	18	15	12	-	18	16	12	-	18	15	12	-	17	14	11	-							
kW	1.98	2.02	2.08	-	2.12	2.16	2.23	-	2.25	2.30	2.37	-	2.36	2.41	2.49	-	2.46	2.51	2.59	-	2.54	2.59	2.67	-							
Amps	8.6	8.7	9.0	-	9.1	9.3	9.5	-	9.7	9.9	10.2	-	10.3	10.5	10.8	-	10.8	11.1	11.4	-	11.4	11.6	12.0	-							
Hi PR	217	233	246	-	243	262	276	-	277	298	314	-	315	339	358	-	354	381	403	-	391	421	445	-							
Lo PR	105	112	122	-	111	118	129	-	115	123	134	-	121	129	141	-	127	135	147	-	127	135	147	-							

IDB	AIRFLOW	OUTDOOR AMBIENT TEMPERATURE												115°F																	
		65°F						75°F						85°F						95°F						105°F					
		59	63	67	71	75	79	59	63	67	71	75	79	59	63	67	71	75	79	59	63	67	71	75	79	59	63	67	71	75	79
75	1180	MBh	28.5	29.3	31.8	34.1	27.8	28.7	31.0	33.3	27.2	28.0	30.3	32.5	26.5	27.3	29.5	31.7	25.2	25.9	28.1	30.1	23.3	24.0	26.0	27.9					
		S/T	0.87	0.77	0.59	0.38	0.90	0.80	0.61	0.39	0.92	0.82	0.62	0.40	0.95	0.85	0.64	0.41	0.99	0.88	0.67	0.43	0.99	0.89	0.67	0.43					
	ΔT	19	18	14	10	19	18	15	10	19	18	15	10	20	18	15	10	19	18	15	10	18	17	14	9						
	kW	2.05	2.10	2.16	2.23	2.21	2.25	2.32	2.39	2.34	2.39	2.46	2.54	2.46	2.51	2.59	2.67	2.56	2.61	2.70	2.78	2.64	2.70	2.79	2.88						
	Amps	8.9	9.1	9.3	9.6	9.5	9.6	9.9	10.2	10.1	10.3	10.6	10.9	10.7	10.9	11.2	11.6	11.3	11.5	11.8	12.2	11.8	12.1	12.4	12.9						
	Hi PR	228	245	259	270	256	275	291	303	291	313	331	345	331	357	376	393	373	401	424	442	412	443	468	488						
	Lo PR	110	118	128	137	117	124	136	144	121	129	141	150	127	136	148	158	134	142	155	165	138	147	160	171						
	75	1050	MBh	27.7	28.5	30.8	33.1	27.0	27.8	30.1	32.3	26.4	27.2	29.4	31.6	25.7	26.5	28.7	30.8	24.5	25.2	27.3	29.2	22.7	23.3	25.2	27.1				
	S/T	0.83	0.74	0.56	0.36	0.86	0.77	0.58	0.37	0.88	0.78	0.59	0.38	0.91	0.81	0.61	0.39	0.94	0.84	0.64	0.41	0.95	0.85	0.64	0.41						
	ΔT	20	18	15	10	20	19	15	11	20	19	15	11	20	19	15	11	20	19	15	10	19	17	14	10						
kW	2.04	2.08	2.14	2.21	2.19	2.23	2.30	2.38	2.32	2.37	2.44	2.52	2.44	2.49	2.57	2.65	2.54	2.59	2.67	2.76	2.62	2.68	2.77	2.86							
Amps	8.8	9.0	9.2	9.5	9.4	9.6	9.8	10.1	10.1	10.3	10.5	10.9	10.6	10.8	11.1	11.5	11.2	11.4	11.8	12.1	11.8	12.0	12.3	12.8							
Hi PR	226	243	256	267	253	273	288	300	288	310	327	341	328	353	373	389	369	397	419	437	408	439	463	483							
Lo PR	109	116	127	135	116	123	134	143	120	128	139	149	126	134	147	156	132	141	154	164	137	145	159	169							
75	920	MBh	25.5	26.3	28.5	30.5	24.9	25.7	27.8	29.8	24.4	25.1	27.1	29.1	23.8	24.5	26.5	28.4	22.6	23.2	25.2	27.0	20.9	21.5	23.3	25.0					
S/T	0.80	0.71	0.54	0.35	0.82	0.74	0.56	0.36	0.85	0.76	0.57	0.37	0.87	0.78	0.59	0.38	0.91	0.81	0.61	0.39	0.91	0.82	0.62	0.40							
ΔT	20	19	15	11	21	19	16	11	21	19	16	11	21	19	16	11	21	19	15	11	20	18	14	10							
kW	1.99	2.03	2.09	2.16	2.14	2.18	2.25	2.32	2.27	2.31	2.39	2.46	2.38	2.43	2.51	2.59	2.48	2.53	2.61	2.69	2.56	2.61	2.70	2.78							
Amps	8.6	8.8	9.0	9.3	9.2	9.4	9.6	9.9	9.8	10.0	10.3	10.6	10.4	10.6	10.9	11.2	10.9	11.2	11.5	11.8	11.5	11.7	12.1	12.4							
Hi PR	219	236	249	259	246	264	279	291	279	301	317	331	318	342	362	377	358	385	407	424	395	426	449	469							
Lo PR	106	113	123	131	112	119	130	139	116	124	135	144	122	130	142	151	128	136	149	159	133	141	154	164							

IDB: Entering Indoor Dry Bulb Temperature
 High and low pressures are measured at the liquid and suction access fittings.
 Shaded area reflects ACCA (TVA) conditions
 Amps: Unit amps (compressor+ evaporator + condenser fan motors).
 kW = Total system power

EXPANDED COOLING DATA — DP13CH3041** (CONT.)

IDB	AIRFLOW	OUTDOOR AMBIENT TEMPERATURE												ENTERING INDOOR WET BULB TEMPERATURE												
		65°F				75°F				85°F				95°F				105°F				115°F				
		59	63	67	71	59	63	67	71	59	63	67	71	59	63	67	71	59	63	67	71	59	63	67	71	
80	1180	MBh	29.0	29.6	31.7	33.9	28.3	29.0	30.9	33.1	27.7	28.3	30.2	32.3	27.0	27.6	29.5	31.5	25.6	26.2	28.0	29.9	23.7	24.3	25.9	27.7
		S/T	0.95	0.89	0.72	0.54	1.00	0.92	0.75	0.56	1.00	0.95	0.77	0.58	1.00	1.00	0.79	0.59	1.00	1.00	0.82	0.62	1.00	1.00	0.83	0.62
	ΔT	21	21	18	14	22	21	18	14	21	21	18	14	21	21	18	15	20	20	18	14	19	19	17	13	
	kW	2.07	2.11	2.18	2.24	2.22	2.27	2.34	2.41	2.36	2.41	2.48	2.56	2.48	2.53	2.61	2.69	2.58	2.63	2.72	2.81	2.66	2.72	2.81	2.90	
	Amps	8.9	9.1	9.4	9.6	9.5	9.7	10.0	10.3	10.2	10.4	10.7	11.0	10.8	11.0	11.3	11.7	11.4	11.6	11.9	12.3	11.9	12.2	12.5	13.0	
	Hi PR	230	248	262	273	258	278	294	306	294	316	334	348	335	360	380	397	376	405	428	446	416	448	473	493	
	Lo PR	112	119	130	138	118	125	137	146	123	130	142	152	129	137	149	159	135	143	157	167	140	148	162	173	
	MBh	28.2	28.8	30.7	32.9	27.5	28.1	30.0	32.1	26.9	27.4	29.3	31.3	26.2	26.8	28.6	30.6	24.9	25.4	27.2	29.0	23.1	23.6	25.2	26.9	
	S/T	0.91	0.85	0.69	0.52	0.94	0.88	0.72	0.54	0.96	0.90	0.73	0.55	0.99	0.93	0.76	0.57	1.00	0.97	0.79	0.59	1.00	0.97	0.79	0.59	
	ΔT	22	21	19	15	23	22	19	15	23	22	19	15	23	22	19	15	22	22	19	15	20	20	17	14	
kW	2.05	2.10	2.16	2.23	2.21	2.25	2.32	2.39	2.34	2.39	2.46	2.54	2.46	2.51	2.59	2.67	2.56	2.61	2.70	2.78	2.64	2.70	2.79	2.88		
Amps	8.9	9.1	9.3	9.6	9.5	9.6	9.9	10.2	10.1	10.3	10.6	11.0	10.7	10.9	11.2	11.6	11.3	11.5	11.8	12.2	11.8	12.1	12.4	12.9		
Hi PR	228	245	259	270	256	275	291	303	291	313	331	345	331	357	377	393	373	401	424	442	412	443	468	488		
Lo PR	110	118	128	137	117	124	136	144	121	129	141	150	127	136	148	158	134	142	155	165	138	147	160	171		
MBh	26.0	26.6	28.4	30.3	25.4	25.9	27.7	29.6	24.8	25.3	27.1	28.9	24.2	24.7	26.4	28.2	23.0	23.5	25.1	26.8	21.3	21.7	23.2	24.8		
S/T	0.87	0.82	0.67	0.50	0.90	0.85	0.69	0.52	0.93	0.87	0.71	0.53	0.96	0.90	0.73	0.55	0.99	0.93	0.76	0.57	1.00	0.94	0.76	0.57		
ΔT	23	22	19	15	23	22	19	15	23	22	19	15	23	22	19	15	23	22	19	15	21	20	18	14		
kW	2.01	2.05	2.11	2.17	2.15	2.20	2.27	2.34	2.28	2.33	2.40	2.48	2.40	2.45	2.53	2.61	2.50	2.55	2.63	2.72	2.58	2.63	2.72	2.81		
Amps	8.7	8.9	9.1	9.4	9.2	9.4	9.7	10.0	9.9	10.1	10.4	10.7	10.5	10.7	11.0	11.3	11.0	11.2	11.6	11.9	11.6	11.8	12.1	12.5		
Hi PR	221	238	251	262	248	267	282	294	282	304	321	334	321	346	365	381	362	389	411	429	399	430	454	473		
Lo PR	107	114	124	133	113	120	132	140	118	125	137	146	124	132	144	153	130	138	150	160	134	143	156	166		
85	1180	MBh	29.5	30.1	31.5	33.6	28.8	29.4	30.8	32.8	28.1	28.7	30.0	32.1	27.5	28.0	29.3	31.3	26.1	26.6	27.8	29.7	24.2	24.6	25.8	27.5
		S/T	1.00	0.96	0.87	0.70	1.00	1.00	0.90	0.73	1.00	1.00	0.92	0.75	1.00	1.00	0.95	0.77	1.00	1.00	0.99	0.80	1.00	1.00	0.99	0.81
	ΔT	23	23	21	18	22	23	22	19	22	22	22	19	21	22	22	19	20	21	21	19	19	19	19	17	
	kW	2.09	2.13	2.19	2.26	2.24	2.29	2.36	2.43	2.38	2.43	2.50	2.58	2.50	2.55	2.63	2.72	2.60	2.65	2.74	2.83	2.69	2.75	2.83	2.93	
	Amps	9.0	9.2	9.4	9.7	9.6	9.8	10.1	10.4	10.3	10.5	10.8	11.1	10.9	11.1	11.4	11.8	11.5	11.7	12.0	12.4	12.0	12.3	12.6	13.1	
	Hi PR	233	250	264	276	261	281	297	309	297	319	337	352	338	364	384	401	380	409	432	451	420	452	477	498	
	Lo PR	113	120	131	139	119	127	138	147	124	132	144	153	130	138	151	161	136	145	158	169	141	150	164	174	
	MBh	28.7	29.2	30.6	32.6	28.0	28.5	29.9	31.9	27.3	27.9	29.2	31.1	26.7	27.2	28.5	30.4	25.3	25.8	27.0	28.8	23.5	23.9	25.0	26.7	
	S/T	0.95	0.92	0.83	0.67	0.98	0.95	0.86	0.69	1.00	0.97	0.88	0.71	1.00	1.00	0.91	0.74	1.00	1.00	0.94	0.76	1.00	1.00	0.95	0.77	
	ΔT	24	23	22	19	24	24	22	19	24	24	22	19	23	24	23	20	22	23	22	19	21	21	21	18	
kW	2.07	2.11	2.18	2.24	2.22	2.27	2.34	2.41	2.36	2.41	2.48	2.56	2.48	2.53	2.61	2.69	2.58	2.63	2.72	2.81	2.66	2.72	2.81	2.90		
Amps	8.9	9.1	9.4	9.6	9.5	9.7	10.0	10.3	10.2	10.4	10.7	11.0	10.8	11.0	11.3	11.7	11.4	11.6	11.9	12.3	11.9	12.2	12.5	13.0		
Hi PR	230	248	262	273	258	278	294	306	294	316	334	348	335	360	380	397	376	405	428	446	416	448	473	493		
Lo PR	112	119	130	138	118	125	137	146	123	130	142	152	129	137	149	159	135	143	157	167	140	148	162	173		
MBh	26.4	27.0	28.2	30.1	25.8	26.3	27.6	29.4	25.2	25.7	26.9	28.7	24.6	25.1	26.3	28.0	23.4	23.8	25.0	26.6	21.7	22.1	23.1	24.7		
S/T	0.92	0.88	0.80	0.65	0.95	0.92	0.83	0.67	0.97	0.94	0.85	0.69	1.00	0.97	0.87	0.71	1.00	1.00	0.91	0.74	1.00	1.00	0.91	0.74		
ΔT	24	24	22	19	24	24	23	20	25	24	23	20	25	24	23	20	23	24	23	20	22	22	21	18		
kW	2.02	2.06	2.13	2.19	2.17	2.22	2.28	2.36	2.30	2.35	2.42	2.50	2.42	2.47	2.55	2.63	2.52	2.57	2.65	2.74	2.60	2.66	2.74	2.83		
Amps	8.8	8.9	9.2	9.4	9.3	9.5	9.8	10.1	10.0	10.2	10.5	10.8	10.5	10.8	11.1	11.4	11.1	11.3	11.7	12.0	11.7	11.9	12.2	12.6		
Hi PR	223	240	254	265	251	270	285	297	285	307	324	338	325	349	369	385	365	393	415	433	403	434	458	478		
Lo PR	108	115	126	134	114	122	133	141	119	126	138	147	125	133	145	154	131	139	152	162	135	144	157	167		

IDB: Entering Indoor Dry Bulb Temperature
 High and low pressures are measured at the liquid and suction access fittings.
 Shaded area reflects AHRI (TVA) conditions.
 Amps: Unit amps (compressor+ evaporator + condenser fan motors).
 kW = Total system power

EXPANDED COOLING DATA — DP13CH3641* * *

IDB	AIRFLOW	OUTDOOR AMBIENT TEMPERATURE												INDOOR WET BULB TEMPERATURE												
		65°F				75°F				85°F				95°F				105°F				115°F				
		59	63	67	71	59	63	67	71	59	63	67	71	59	63	67	71	59	63	67	71	59	63	67	71	
70	1350	MBh	34.5	35.8	39.2	-	33.7	34.9	38.3	-	32.9	34.1	37.3	-	32.1	33.3	36.4	-	30.5	31.6	34.6	-	28.2	29.3	32.1	-
		S/T	0.74	0.62	0.43	-	0.77	0.64	0.45	-	0.79	0.66	0.46	-	0.82	0.68	0.47	-	0.85	0.71	0.49	-	0.85	0.71	0.49	-
		ΔT	17	15	11	-	18	15	12	-	18	15	12	-	18	15	12	-	18	15	12	-	16	14	11	-
		kW	2.53	2.59	2.66	-	2.72	2.78	2.86	-	2.89	2.95	3.04	-	3.03	3.10	3.20	-	3.16	3.23	3.33	-	3.26	3.34	3.44	-
		Amps	10.9	11.1	11.4	-	11.6	11.9	12.2	-	12.5	12.7	13.1	-	13.2	13.5	13.9	-	13.9	14.2	14.7	-	14.7	15.0	15.4	-
	HI PR	241	260	274	-	271	291	308	-	308	331	350	-	351	377	399	-	395	425	448	-	436	469	495	-	
	LO PR	108	115	125	-	114	121	132	-	118	126	137	-	124	132	144	-	130	139	151	-	135	143	156	-	
	MBh	33.5	34.7	38.0	-	32.7	33.9	37.1	-	31.9	33.1	36.3	-	31.2	32.3	35.4	-	29.6	30.7	33.6	-	27.4	28.4	31.1	-	
	S/T	0.71	0.59	0.41	-	0.73	0.61	0.43	-	0.75	0.63	0.44	-	0.78	0.65	0.45	-	0.81	0.67	0.47	-	0.81	0.68	0.47	-	
	ΔT	18	16	12	-	18	16	12	-	18	16	12	-	19	16	12	-	18	16	12	-	17	15	11	-	
	kW	2.52	2.57	2.64	-	2.70	2.76	2.84	-	2.86	2.93	3.02	-	3.01	3.07	3.17	-	3.13	3.20	3.30	-	3.24	3.31	3.42	-	
	Amps	10.8	11.0	11.3	-	11.6	11.8	12.1	-	12.4	12.6	13.0	-	13.1	13.4	13.8	-	13.8	14.1	14.5	-	14.5	14.9	15.3	-	
	HI PR	239	257	271	-	268	288	305	-	305	328	346	-	347	374	395	-	391	420	444	-	432	464	490	-	
	LO PR	107	114	124	-	113	120	131	-	117	125	136	-	123	131	143	-	129	137	150	-	133	142	155	-	
	MBh	30.9	32.0	35.1	-	30.2	31.3	34.3	-	29.5	30.5	33.5	-	28.8	29.8	32.7	-	27.3	28.3	31.0	-	25.3	26.2	28.7	-	
	S/T	0.68	0.57	0.40	-	0.71	0.59	0.41	-	0.73	0.61	0.42	-	0.75	0.63	0.43	-	0.78	0.65	0.45	-	0.78	0.66	0.45	-	
	ΔT	18	16	12	-	19	16	12	-	19	16	12	-	19	16	12	-	19	16	12	-	17	15	11	-	
	kW	2.46	2.51	2.58	-	2.64	2.69	2.77	-	2.80	2.86	2.94	-	2.94	3.00	3.09	-	3.06	3.12	3.22	-	3.16	3.23	3.33	-	
	Amps	10.6	10.8	11.1	-	11.3	11.5	11.8	-	12.1	12.3	12.7	-	12.8	13.1	13.4	-	13.5	13.8	14.2	-	14.2	14.5	14.9	-	
	HI PR	232	249	263	-	260	280	295	-	296	318	336	-	337	362	383	-	379	408	431	-	419	451	476	-	
	LO PR	103	110	120	-	109	116	127	-	114	121	132	-	119	127	139	-	125	133	145	-	129	138	150	-	

75	1350	MBh	35.1	36.1	39.1	42.0	34.3	35.3	38.2	41.0	33.4	34.4	37.3	40.0	32.6	33.6	36.4	39.0	31.0	31.9	34.5	37.1	28.7	29.6	32.0	34.3
		S/T	0.84	0.76	0.57	0.37	0.88	0.78	0.59	0.38	0.90	0.80	0.61	0.39	0.93	0.83	0.63	0.40	0.96	0.86	0.65	0.42	0.97	0.87	0.66	0.42
		ΔT	20	19	15	11	20	19	15	11	20	19	15	11	21	19	16	11	20	19	15	11	20	19	17	14
		kW	2.55	2.61	2.69	2.77	2.74	2.80	2.89	2.98	2.91	2.97	3.07	3.16	3.06	3.12	3.22	3.33	3.18	3.25	3.36	3.47	3.29	3.36	3.47	3.59
		Amps	11.0	11.2	11.5	11.9	11.7	12.0	12.3	12.7	12.6	12.8	13.2	13.6	13.3	13.6	14.0	14.4	14.1	14.4	14.8	15.3	14.8	15.1	15.5	16.1
	HI PR	244	262	277	289	274	294	311	324	311	335	353	369	354	381	403	420	399	429	453	472	440	474	500	522	
	LO PR	109	116	126	135	115	122	134	142	120	127	139	148	126	134	146	155	132	140	153	163	136	145	158	168	
	MBh	34.1	35.1	38.0	40.7	33.3	34.2	37.1	39.8	32.5	33.4	36.2	38.8	31.7	32.6	35.3	37.9	30.1	31.0	33.5	36.0	27.9	28.7	31.1	33.3	
	S/T	0.81	0.72	0.55	0.35	0.84	0.75	0.57	0.36	0.86	0.77	0.58	0.37	0.88	0.79	0.60	0.38	0.92	0.82	0.62	0.40	0.93	0.83	0.63	0.40	
	ΔT	21	19	16	11	21	20	16	11	21	20	16	11	21	20	16	11	21	19	16	11	20	18	15	10	
	kW	2.53	2.59	2.67	2.75	2.72	2.78	2.87	2.96	2.89	2.95	3.04	3.14	3.03	3.10	3.20	3.30	3.16	3.23	3.33	3.44	3.27	3.34	3.44	3.56	
	Amps	10.9	11.1	11.4	11.8	11.6	11.9	12.2	12.6	12.5	12.7	13.1	13.5	13.2	13.5	13.9	14.3	13.9	14.2	14.7	15.1	14.7	15.0	15.4	15.9	
	HI PR	241	260	274	286	271	291	308	321	308	331	350	365	351	377	399	416	395	425	448	468	436	469	495	517	
	LO PR	108	115	125	133	114	121	132	141	118	126	137	146	124	132	144	154	130	139	151	161	135	143	157	167	
	MBh	31.4	32.4	35.0	37.6	30.7	31.6	34.2	36.7	30.0	30.9	33.4	35.8	29.2	30.1	32.6	35.0	27.8	28.6	31.0	33.2	25.7	26.5	28.7	30.8	
	S/T	0.78	0.69	0.53	0.34	0.81	0.72	0.55	0.35	0.83	0.74	0.56	0.36	0.85	0.76	0.58	0.37	0.88	0.79	0.60	0.39	0.89	0.80	0.60	0.39	
	ΔT	21	20	16	11	22	20	16	11	22	20	16	11	22	20	16	11	22	20	16	11	20	19	15	10	
	kW	2.48	2.53	2.60	2.68	2.66	2.71	2.80	2.89	2.82	2.88	2.97	3.06	2.96	3.02	3.12	3.22	3.08	3.15	3.25	3.35	3.19	3.25	3.36	3.47	
	Amps	10.7	10.9	11.2	11.5	11.4	11.6	11.9	12.3	12.2	12.4	12.8	13.2	12.9	13.2	13.5	14.0	13.6	13.9	14.3	14.8	14.3	14.6	15.0	15.5	
	HI PR	234	252	266	277	263	283	299	311	299	321	339	354	340	366	387	403	383	412	435	454	423	455	481	501	
	LO PR	105	111	121	129	110	118	128	137	115	122	133	142	121	128	140	149	126	134	147	156	131	139	152	162	

IDB: Entering Indoor Dry Bulb Temperature
 High and low pressures are measured at the liquid and suction access fittings.
 Shaded area reflects ACCA (TVA) conditions
 Amps: Unit amps (compressor+ evaporator + condenser fan motors).
 kW = Total system power

EXPANDED COOLING DATA — DP13CH3641** (CONT.)

IDB	AIRFLOW	OUTDOOR AMBIENT TEMPERATURE												ENTERING INDOOR WET BULB TEMPERATURE												
		65°F				75°F				85°F				95°F				105°F				115°F				
		59	63	67	71	59	63	67	71	59	63	67	71	59	63	67	71	59	63	67	71	59	63	67	71	
80	1350	MBh	35.7	36.5	39.0	41.7	34.9	35.6	38.1	40.7	34.0	34.8	37.2	39.7	33.2	33.9	36.3	38.8	31.5	32.2	34.4	36.8	29.2	29.9	31.9	34.1
		S/T	0.93	0.87	0.71	0.53	0.96	0.90	0.73	0.55	1.00	0.92	0.75	0.56	1.00	0.95	0.78	0.58	1.00	1.00	0.81	0.60	1.00	1.00	0.81	0.61
	ΔT	23	22	19	15	23	22	19	15	23	22	19	15	23	22	19	15	21	22	19	15	20	20	18	14	
	kW	2.57	2.63	2.71	2.79	2.77	2.82	2.91	3.00	2.93	3.00	3.09	3.19	3.08	3.15	3.25	3.36	3.21	3.28	3.39	3.50	3.32	3.39	3.50	3.62	
	Amps	11.1	11.3	11.6	12.0	11.8	12.1	12.4	12.8	12.7	12.9	13.3	13.7	13.4	13.7	14.1	14.6	14.2	14.5	14.9	15.4	14.9	15.2	15.7	16.2	
	HI PR	246	265	280	292	276	297	314	327	314	338	357	372	358	385	407	424	403	433	458	477	445	479	505	527	
	LO PR	110	117	128	136	116	124	135	144	121	128	140	149	127	135	147	157	133	141	154	164	137	146	160	170	
	MBh	34.7	35.4	37.8	40.5	33.9	34.6	37.0	39.5	33.0	33.8	36.1	38.6	32.2	32.9	35.2	37.6	30.6	31.3	33.4	35.7	28.4	29.0	31.0	33.1	
	S/T	0.88	0.83	0.67	0.50	0.92	0.86	0.70	0.52	0.94	0.88	0.72	0.54	0.97	0.91	0.74	0.55	1.00	0.94	0.77	0.57	1.00	0.95	0.77	0.58	
	ΔT	23	22	20	16	24	23	20	16	24	23	20	16	24	23	20	16	23	23	20	16	22	21	18	15	
kW	2.55	2.61	2.69	2.77	2.74	2.80	2.89	2.98	2.91	2.97	3.07	3.17	3.06	3.12	3.22	3.33	3.18	3.25	3.36	3.47	3.29	3.36	3.47	3.59		
Amps	11.0	11.2	11.5	11.9	11.7	12.0	12.3	12.7	12.6	12.8	13.2	13.6	13.3	13.6	14.0	14.4	14.1	14.4	14.8	15.3	14.8	15.1	15.5	16.1		
HI PR	244	262	277	289	274	294	311	324	311	335	354	369	354	381	403	420	399	429	453	472	440	474	500	522		
LO PR	109	116	126	135	115	122	134	142	120	127	139	148	126	134	146	155	132	140	153	163	136	145	158	168		
MBh	32.0	32.7	34.9	37.3	31.2	31.9	34.1	36.5	30.5	31.2	33.3	35.6	29.8	30.4	32.5	34.7	28.3	28.9	30.9	33.0	26.2	26.8	28.6	30.6		
S/T	0.85	0.80	0.65	0.49	0.88	0.83	0.67	0.50	0.91	0.85	0.69	0.52	0.93	0.88	0.71	0.53	0.97	0.91	0.74	0.55	0.98	0.92	0.75	0.56		
ΔT	24	23	20	16	24	23	20	16	24	23	20	16	24	23	20	16	24	23	20	16	22	21	19	15		
kW	2.50	2.55	2.62	2.70	2.68	2.73	2.82	2.91	2.84	2.90	2.99	3.09	2.98	3.05	3.15	3.25	3.11	3.17	3.28	3.38	3.21	3.28	3.39	3.50		
Amps	10.7	11.0	11.3	11.6	11.5	11.7	12.0	12.4	12.3	12.5	12.9	13.3	13.0	13.3	13.7	14.1	13.7	14.0	14.4	14.9	14.4	14.7	15.2	15.7		
HI PR	236	254	269	280	265	286	302	314	302	325	343	358	344	370	391	407	387	416	439	458	427	460	485	506		
LO PR	106	112	123	131	112	119	130	138	116	123	135	143	122	130	141	151	128	136	148	158	132	140	153	163		
85	1350	MBh	36.3	37.0	38.8	41.4	35.5	36.2	37.9	40.4	34.6	35.3	37.0	39.4	33.8	34.4	36.1	38.5	32.1	32.7	34.3	36.6	29.7	30.3	31.7	33.9
		S/T	0.97	0.94	0.85	0.69	1.00	0.97	0.88	0.71	1.00	1.00	0.90	0.73	1.00	1.00	0.93	0.75	1.00	1.00	0.96	0.78	1.00	1.00	0.97	0.79
	ΔT	24	24	22	19	24	24	23	20	24	24	23	20	23	23	23	20	22	22	22	19	20	21	21	18	
	kW	2.59	2.65	2.73	2.81	2.79	2.85	2.93	3.03	2.96	3.02	3.12	3.22	3.11	3.18	3.28	3.38	3.24	3.31	3.41	3.53	3.35	3.42	3.53	3.65	
	Amps	11.2	11.4	11.7	12.1	11.9	12.2	12.5	12.9	12.8	13.0	13.4	13.9	13.5	13.8	14.2	14.7	14.3	14.6	15.0	15.5	15.0	15.3	15.8	16.3	
	HI PR	249	268	283	295	279	300	317	331	317	342	361	376	361	389	411	428	407	438	462	482	449	483	511	533	
	LO PR	111	118	129	137	117	125	136	145	122	130	142	151	128	136	149	158	134	143	156	166	139	148	161	172	
	MBh	35.3	35.9	37.7	40.2	34.4	35.1	36.8	39.2	33.6	34.3	35.9	38.3	32.8	33.4	35.0	37.4	31.2	31.8	33.3	35.5	28.9	29.4	30.8	32.9	
	S/T	0.93	0.89	0.81	0.65	0.96	0.93	0.84	0.68	0.98	0.95	0.86	0.70	1.00	0.98	0.89	0.72	1.00	1.00	0.92	0.75	1.00	1.00	0.93	0.75	
	ΔT	25	25	23	20	25	25	24	20	25	25	24	20	25	25	24	21	24	24	23	20	22	23	22	19	
kW	2.57	2.63	2.71	2.79	2.77	2.82	2.91	3.00	2.93	3.00	3.09	3.19	3.08	3.15	3.25	3.36	3.21	3.28	3.39	3.50	3.32	3.39	3.50	3.62		
Amps	11.1	11.3	11.6	12.0	11.8	12.1	12.4	12.8	12.7	12.9	13.3	13.7	13.4	13.7	14.1	14.6	14.2	14.5	14.9	15.4	14.9	15.2	15.7	16.2		
HI PR	246	265	280	292	276	297	314	327	314	338	357	372	358	385	407	424	403	433	458	477	445	479	505	527		
LO PR	110	117	128	136	116	124	135	144	121	128	140	149	127	135	147	157	133	141	154	164	137	146	160	170		
MBh	32.6	33.2	34.8	37.1	31.8	32.4	33.9	36.2	31.0	31.6	33.1	35.4	30.3	30.9	32.3	34.5	28.8	29.3	30.7	32.8	26.6	27.2	28.4	30.3		
S/T	0.89	0.86	0.78	0.63	0.93	0.89	0.81	0.65	0.95	0.92	0.83	0.67	0.98	0.95	0.85	0.69	1.00	0.98	0.89	0.72	1.00	0.99	0.89	0.72		
ΔT	25	25	24	20	26	25	24	21	26	25	24	21	26	26	24	21	25	25	24	21	23	24	22	19		
kW	2.51	2.57	2.64	2.73	2.70	2.76	2.84	2.93	2.86	2.92	3.02	3.11	3.01	3.07	3.17	3.27	3.13	3.20	3.30	3.41	3.24	3.31	3.42	3.53		
Amps	10.8	11.0	11.3	11.7	11.5	11.8	12.1	12.5	12.4	12.6	13.0	13.4	13.1	13.4	13.8	14.2	13.8	14.1	14.5	15.0	14.5	14.8	15.3	15.8		
HI PR	239	257	271	283	268	288	305	318	305	328	346	361	347	374	394	411	391	420	444	463	431	464	490	511		
LO PR	107	113	124	132	113	120	131	139	117	125	136	145	123	131	143	152	129	137	150	159	133	142	155	165		

IDB: Entering Indoor Dry Bulb Temperature
 High and low pressures are measured at the liquid and suction access fittings.
 Shaded area reflects AHRI (TVA) conditions.
 Amps: Unit amps (compressor+ evaporator + condenser fan motors).
 kW = Total system power

EXPANDED COOLING DATA — DP13CH4241**

IDB	AIRFLOW	OUTDOOR AMBIENT TEMPERATURE												ENTERING INDOOR WET BULB TEMPERATURE												
		65°F				75°F				85°F				95°F				105°F				115°F				
		59	63	67	71	59	63	67	71	59	63	67	71	59	63	67	71	59	63	67	71	59	63	67	71	
1580	MBh	40.2	41.6	45.6	-	39.2	40.7	44.6	-	38.3	39.7	43.5	-	37.4	38.7	42.4	-	35.5	36.8	40.3	-	32.9	34.1	37.3	-	
	S/T	0.77	0.65	0.45	-	0.80	0.67	0.46	-	0.82	0.69	0.48	-	0.85	0.71	0.49	-	0.88	0.74	0.51	-	0.89	0.74	0.51	-	
	ΔT	18	16	12	-	18	16	12	-	18	16	12	-	18	16	12	-	18	16	12	-	17	15	11	-	
	kW	2.77	2.83	2.91	-	2.97	3.03	3.12	-	3.14	3.20	3.30	-	3.29	3.36	3.46	-	3.42	3.49	3.60	-	3.53	3.60	3.72	-	
	Amps	12.3	12.5	12.9	-	13.1	13.4	13.7	-	14.0	14.3	14.7	-	14.8	15.1	15.6	-	15.6	16.0	16.4	-	16.4	16.8	17.3	-	
	HI PR	225	242	256	-	252	272	287	-	287	309	326	-	327	352	372	-	368	396	418	-	406	437	462	-	
	LO PR	110	117	128	-	117	124	135	-	121	129	141	-	127	135	148	-	133	142	155	-	138	147	160	-	
	1410	MBh	39.0	40.4	44.3	-	38.1	39.5	43.3	-	37.2	38.5	42.2	-	36.3	37.6	41.2	-	34.5	35.7	39.1	-	31.9	33.1	36.3	-
		S/T	0.74	0.62	0.43	-	0.77	0.64	0.44	-	0.78	0.66	0.45	-	0.81	0.68	0.47	-	0.84	0.70	0.49	-	0.85	0.71	0.49	-
		ΔT	19	16	12	-	19	16	12	-	19	16	12	-	19	17	13	-	19	16	12	-	18	15	12	-
		kW	2.75	2.81	2.89	-	2.95	3.00	3.09	-	3.12	3.18	3.27	-	3.27	3.33	3.43	-	3.39	3.46	3.57	-	3.50	3.58	3.69	-
		Amps	12.2	12.5	12.8	-	13.0	13.3	13.6	-	13.9	14.2	14.6	-	14.7	15.0	15.4	-	15.5	15.8	16.3	-	16.3	16.6	17.1	-
HI PR		223	240	253	-	250	269	284	-	284	306	323	-	324	348	368	-	364	392	414	-	402	433	457	-	
LO PR		109	116	127	-	115	123	134	-	120	128	139	-	126	134	146	-	132	140	153	-	137	145	159	-	
1240		MBh	36.0	37.3	40.9	-	35.2	36.4	39.9	-	34.3	35.6	39.0	-	33.5	34.7	38.0	-	31.8	33.0	36.1	-	29.5	30.5	33.5	-
		S/T	0.71	0.59	0.41	-	0.74	0.62	0.43	-	0.76	0.63	0.44	-	0.78	0.65	0.45	-	0.81	0.68	0.47	-	0.82	0.68	0.47	-
		ΔT	19	16	12	-	19	17	13	-	19	17	13	-	19	17	13	-	19	17	13	-	18	15	12	-
		kW	2.69	2.74	2.82	-	2.88	2.94	3.02	-	3.04	3.11	3.20	-	3.19	3.25	3.35	-	3.31	3.38	3.49	-	3.42	3.49	3.60	-
		Amps	12.0	12.2	12.5	-	12.7	13.0	13.3	-	13.6	13.9	14.3	-	14.4	14.7	15.1	-	15.2	15.5	15.9	-	15.9	16.2	16.7	-
	HI PR	216	233	246	-	242	261	275	-	276	297	313	-	314	338	357	-	353	380	401	-	390	420	444	-	
	LO PR	106	113	123	-	112	119	130	-	116	124	135	-	122	130	142	-	128	136	149	-	132	141	154	-	
	1580	MBh	40.9	42.1	45.5	48.9	39.9	41.1	44.5	47.7	39.0	40.1	43.4	46.6	38.0	39.1	42.4	45.5	36.1	37.2	40.2	43.2	33.4	34.4	37.3	40.0
		S/T	0.88	0.79	0.60	0.38	0.91	0.82	0.62	0.40	0.94	0.84	0.63	0.41	0.97	0.86	0.65	0.42	1.00	0.90	0.68	0.44	1.00	0.90	0.68	0.44
		ΔT	21	19	16	11	21	20	16	11	21	20	16	11	21	20	16	11	21	19	16	11	19	18	15	10
		kW	2.79	2.85	2.93	3.02	2.99	3.05	3.14	3.23	3.16	3.23	3.32	3.43	3.32	3.38	3.49	3.60	3.45	3.52	3.63	3.74	3.56	3.63	3.75	3.87
		Amps	12.4	12.6	13.0	13.4	13.2	13.5	13.8	14.3	14.1	14.4	14.8	15.3	15.0	15.3	15.7	16.2	15.8	16.1	16.5	17.1	16.6	16.9	17.4	18.0
HI PR		227	245	258	269	255	274	290	302	290	312	330	344	330	355	375	392	372	400	422	440	411	442	467	487	
LO PR		111	119	129	138	118	125	137	146	122	130	142	151	128	137	149	159	135	143	156	167	139	148	162	172	
1410		MBh	39.7	40.8	44.2	47.4	38.7	39.9	43.2	46.3	37.8	38.9	42.2	45.2	36.9	38.0	41.1	44.1	35.1	36.1	39.1	41.9	32.5	33.4	36.2	38.8
		S/T	0.84	0.75	0.57	0.37	0.87	0.78	0.59	0.38	0.89	0.80	0.60	0.39	0.92	0.82	0.62	0.40	0.96	0.85	0.65	0.42	0.96	0.86	0.65	0.42
		ΔT	22	20	16	11	22	20	17	11	22	20	17	11	22	20	17	12	22	20	16	11	20	19	15	11
		kW	2.77	2.83	2.91	2.99	2.97	3.03	3.12	3.21	3.14	3.20	3.30	3.40	3.29	3.36	3.46	3.57	3.42	3.49	3.60	3.71	3.53	3.60	3.72	3.84
		Amps	12.3	12.6	12.9	13.3	13.1	13.4	13.7	14.2	14.0	14.3	14.7	15.2	14.8	15.1	15.6	16.1	15.6	16.0	16.4	17.0	16.4	16.8	17.3	17.8
	HI PR	225	242	256	267	252	272	287	299	287	309	326	340	327	352	372	388	368	396	418	436	407	437	462	482	
	LO PR	110	117	128	136	117	124	135	144	121	129	141	150	127	135	148	157	133	142	155	165	138	147	160	171	
	1240	MBh	36.6	37.7	40.8	43.8	35.8	36.8	39.9	42.8	34.9	35.9	38.9	41.8	34.1	35.1	38.0	40.7	32.4	33.3	36.1	38.7	30.0	30.9	33.4	35.8
		S/T	0.81	0.72	0.55	0.35	0.84	0.75	0.57	0.37	0.86	0.77	0.58	0.37	0.89	0.79	0.60	0.39	0.92	0.82	0.62	0.40	0.93	0.83	0.63	0.40
		ΔT	22	20	17	11	22	20	17	12	22	20	17	12	22	21	17	12	22	20	17	12	21	19	16	11
		kW	2.71	2.76	2.84	2.93	2.90	2.96	3.04	3.14	3.07	3.13	3.22	3.32	3.22	3.28	3.38	3.48	3.34	3.41	3.51	3.62	3.45	3.52	3.63	3.74
		Amps	12.0	12.3	12.6	13.0	12.8	13.1	13.4	13.8	13.7	14.0	14.4	14.8	14.5	14.8	15.2	15.7	15.3	15.6	16.0	16.5	16.0	16.4	16.8	17.4
HI PR		218	235	248	259	245	264	278	290	279	300	317	330	317	341	360	376	357	384	406	423	394	424	448	467	
LO PR		107	114	124	132	113	120	131	140	117	125	136	145	123	131	143	153	129	138	150	160	134	142	155	165	

IDB: Entering Indoor Dry Bulb Temperature
 High and low pressures are measured at the liquid and suction access fittings.
 Shaded area reflects ACCA (TVA) conditions
 kW = Total system power
 Amps: Unit amps (compressor+ evaporator + condenser fan motors).

EXPANDED COOLING DATA — DP13CH4241** (CONT.)

IDB	AIRFLOW	OUTDOOR AMBIENT TEMPERATURE												ENTERING INDOOR WET BULB TEMPERATURE												
		65°F				75°F				85°F				95°F				105°F				115°F				
		59	63	67	71	59	63	67	71	59	63	67	71	59	63	67	71	59	63	67	71	59	63	67	71	
80	1580	MBh	41.6	42.5	45.4	48.5	40.6	41.5	44.3	47.4	39.6	40.5	43.3	46.3	38.7	39.5	42.2	45.1	36.7	37.6	40.1	42.9	34.0	34.8	37.2	39.7
		S/T	0.97	0.91	0.74	0.55	1.00	0.94	0.76	0.57	1.00	0.96	0.78	0.59	1.00	1.00	0.81	0.60	1.00	1.00	0.84	0.63	1.00	1.00	0.85	0.63
	ΔT	23	22	19	16	24	23	20	16	23	23	23	20	16	23	23	20	16	21	22	20	16	20	20	18	15
	kW	2.81	2.87	2.95	3.04	3.01	3.07	3.16	3.26	3.19	3.25	3.35	3.45	3.34	3.41	3.52	3.63	3.47	3.47	3.55	3.66	3.77	3.59	3.66	3.78	3.90
	Amps	12.5	12.7	13.1	13.5	13.3	13.6	13.9	14.4	14.3	14.5	14.9	15.4	15.1	15.4	15.8	16.3	15.9	16.2	16.2	16.7	17.2	16.7	17.0	17.5	18.1
	HI PR	230	247	261	272	258	277	293	305	293	315	333	347	334	359	379	395	375	404	427	445	415	446	471	492	
	LO PR	113	120	131	139	119	126	138	147	124	131	144	153	130	138	151	161	136	145	158	168	141	150	163	174	
	1410	MBh	40.4	41.3	44.1	47.1	39.4	40.3	43.1	46.0	38.5	39.3	42.0	44.9	37.6	38.4	41.0	43.8	35.7	36.5	39.0	41.6	33.0	33.8	36.1	38.6
		S/T	0.92	0.86	0.70	0.53	0.95	0.89	0.73	0.54	0.98	0.92	0.75	0.56	1.00	0.95	0.77	0.58	1.00	0.98	0.80	0.60	1.00	0.99	0.81	0.60
	ΔT	24	23	20	16	25	24	20	16	24	25	24	20	16	24	24	21	16	23	23	20	16	22	22	19	15
kW	2.79	2.85	2.93	3.02	2.99	3.05	3.14	3.23	3.16	3.23	3.32	3.43	3.32	3.38	3.49	3.60	3.45	3.52	3.63	3.74	3.56	3.63	3.75	3.87		
Amps	12.4	12.6	13.0	13.4	13.2	13.5	13.8	14.3	14.1	14.4	14.8	15.3	15.0	15.3	15.7	16.2	15.8	16.1	16.5	17.1	16.6	16.9	17.4	18.0		
HI PR	227	245	258	269	255	274	290	302	290	312	330	344	330	356	375	392	372	400	422	440	411	442	467	487		
LO PR	111	119	129	138	118	125	137	146	122	130	142	151	129	137	149	159	135	143	156	167	139	148	162	172		
1240	MBh	37.3	38.1	40.7	43.5	36.4	37.2	39.7	42.5	35.5	36.3	38.8	41.5	34.7	35.4	37.8	40.5	32.9	33.6	36.0	38.4	30.5	31.2	33.3	35.6	
	S/T	0.89	0.83	0.68	0.51	0.92	0.86	0.70	0.52	0.94	0.88	0.72	0.54	0.97	0.91	0.74	0.56	1.01	0.95	0.77	0.58	1.02	0.96	0.78	0.58	
ΔT	25	23	20	16	25	24	21	17	25	24	21	17	25	24	21	17	25	24	21	16	22	22	19	15		
kW	2.73	2.78	2.86	2.95	2.92	2.98	3.07	3.16	3.09	3.15	3.25	3.35	3.24	3.31	3.41	3.51	3.37	3.44	3.54	3.65	3.48	3.55	3.66	3.77		
Amps	12.1	12.4	12.7	13.1	12.9	13.2	13.5	13.9	13.8	14.1	14.5	14.9	14.6	14.9	15.3	15.8	15.4	15.7	16.2	16.7	16.2	16.5	17.0	17.5		
HI PR	220	237	251	261	247	266	281	293	281	303	320	333	320	345	364	380	360	388	410	427	398	429	453	472		
LO PR	108	115	126	134	114	121	133	141	119	126	138	147	125	133	145	154	131	139	152	162	135	144	157	167		
85	1580	MBh	42.3	43.1	45.2	48.2	41.3	42.1	44.1	47.1	40.3	41.1	43.1	45.9	39.4	40.1	42.0	44.8	37.4	38.1	39.9	42.6	34.6	35.3	37.0	39.4
		S/T	1.00	0.98	0.88	0.71	1.00	0.96	0.87	0.71	1.00	0.99	0.89	0.72	1.00	1.00	0.92	0.75	1.00	1.00	0.96	0.78	1.00	1.00	0.96	0.78
	ΔT	25	24	23	20	24	25	23	20	23	24	23	20	23	23	24	20	22	22	23	20	22	21	22	19	
	kW	2.83	2.89	2.97	3.06	3.03	3.09	3.19	3.28	3.21	3.28	3.38	3.48	3.37	3.44	3.54	3.65	3.50	3.57	3.68	3.80	3.62	3.69	3.81	3.93	
	Amps	12.6	12.8	13.2	13.6	13.4	13.7	14.0	14.5	14.4	14.7	15.1	15.5	15.2	15.5	15.9	16.4	16.0	16.3	16.8	17.4	16.8	17.2	17.7	18.3	
	HI PR	232	250	263	275	260	280	296	308	296	318	336	351	337	363	383	399	379	408	431	449	419	451	476	496	
	LO PR	114	121	132	141	120	128	139	149	125	133	145	154	131	139	152	162	137	146	160	170	142	151	165	176	
	1410	MBh	41.1	41.9	43.9	46.8	40.1	40.9	42.8	45.7	39.2	39.9	41.8	44.6	38.2	39.0	40.8	43.5	36.3	37.0	38.8	41.3	33.6	34.3	35.9	38.3
		S/T	0.96	0.93	0.84	0.68	1.00	0.96	0.87	0.71	1.00	0.99	0.89	0.72	1.00	1.00	0.92	0.75	1.00	1.00	0.96	0.78	1.00	1.00	0.96	0.78
	ΔT	26	25	24	21	26	26	24	21	26	26	24	21	26	25	25	21	24	24	24	21	22	22	23	20	
kW	2.81	2.87	2.95	3.04	3.01	3.07	3.16	3.26	3.19	3.25	3.35	3.45	3.34	3.41	3.52	3.63	3.47	3.55	3.66	3.77	3.59	3.66	3.78	3.90		
Amps	12.5	12.7	13.1	13.5	13.3	13.6	13.9	14.4	14.3	14.5	14.9	15.4	15.1	15.4	15.8	16.3	15.9	16.2	16.7	17.2	16.7	17.0	17.5	18.1		
HI PR	230	247	261	272	258	277	293	305	293	315	333	347	334	359	379	395	375	404	427	445	415	446	471	492		
LO PR	113	120	131	139	119	126	138	147	124	131	144	153	130	138	151	161	136	145	158	168	141	150	163	174		
1240	MBh	37.9	38.6	40.5	43.2	37.0	37.7	39.5	42.2	36.2	36.9	38.6	41.2	35.3	36.0	37.7	40.2	33.5	34.2	35.8	38.2	31.0	31.6	33.1	35.4	
	S/T	0.93	0.90	0.81	0.66	0.96	0.93	0.84	0.68	0.99	0.95	0.86	0.70	1.00	0.98	0.89	0.72	1.00	1.00	0.92	0.75	1.00	1.00	0.93	0.75	
ΔT	26	26	24	21	26	26	25	21	27	26	25	21	26	26	25	21	25	25	24	21	23	23	23	20		
kW	2.75	2.80	2.89	2.97	2.94	3.00	3.09	3.18	3.11	3.18	3.27	3.37	3.26	3.33	3.43	3.54	3.39	3.46	3.57	3.68	3.50	3.58	3.69	3.80		
Amps	12.2	12.5	12.8	13.2	13.0	13.3	13.6	14.0	13.9	14.2	14.6	15.1	14.7	15.0	15.4	15.9	15.5	15.8	16.3	16.8	16.3	16.6	17.1	17.7		
HI PR	223	240	253	264	250	269	284	296	284	306	323	337	324	348	368	384	364	392	414	432	402	433	457	477		
LO PR	109	116	127	135	115	123	134	143	120	128	139	148	126	134	146	156	132	140	153	163	136	145	159	169		

IDB: Entering Indoor Dry Bulb Temperature
 High and low pressures are measured at the liquid and suction access fittings.
 Shaded area reflects AHRI (TVA) conditions.
 Amps: Unit amps (compressor+ evaporator + condenser fan motors).
 kW = Total system power

EXPANDED COOLING DATA — DP13CH4841**

IDB	AIRFLOW	OUTDOOR AMBIENT TEMPERATURE												115°F																	
		65°F						75°F						85°F						95°F						105°F					
		59	63	67	71	75	79	59	63	67	71	75	79	59	63	67	71	75	79	59	63	67	71	75	79	59	63	67	71	75	79
1800	MBh	44.6	46.2	50.6	-	43.5	45.1	49.5	-	42.5	44.1	48.3	-	41.5	43.0	47.1	-	39.4	40.8	44.7	-	36.5	37.8	41.4	-						
	S/T	0.77	0.64	0.44	-	0.79	0.66	0.46	-	0.81	0.68	0.47	-	0.84	0.70	0.49	-	0.87	0.73	0.50	-	0.88	0.73	0.51	-						
	DT	17	15	11	-	18	15	12	-	18	15	12	-	18	15	12	-	18	15	12	-	16	14	11	-						
	kW	3.20	3.27	3.36	-	3.43	3.49	3.60	-	3.62	3.70	3.81	-	3.80	3.87	3.99	-	3.95	4.03	4.15	-	4.07	4.16	4.29	-						
	Amps	13.9	14.2	14.5	-	14.8	15.1	15.5	-	15.9	16.2	16.6	-	16.8	17.1	17.6	-	17.7	18.0	18.5	-	18.5	18.9	19.5	-						
	Hi PR	234	252	266	-	262	282	298	-	298	321	339	-	340	366	386	-	382	411	434	-	422	454	480	-						
Lo PR	112	119	130	-	118	125	137	-	123	130	142	-	129	137	149	-	135	143	157	-	139	148	162	-							
1600	MBh	43.3	44.9	49.2	-	42.3	43.8	48.0	-	41.3	42.8	46.9	-	40.3	41.7	45.7	-	38.3	39.6	43.4	-	35.4	36.7	40.2	-						
	S/T	0.73	0.61	0.42	-	0.76	0.63	0.44	-	0.78	0.65	0.45	-	0.80	0.67	0.46	-	0.83	0.69	0.48	-	0.84	0.70	0.49	-						
	DT	18	16	12	-	18	16	12	-	18	16	12	-	19	16	12	-	18	16	12	-	17	15	11	-						
	kW	3.18	3.24	3.34	-	3.40	3.47	3.57	-	3.60	3.67	3.78	-	3.77	3.85	3.96	-	3.92	4.00	4.12	-	4.04	4.12	4.25	-						
	Amps	13.8	14.1	14.4	-	14.7	15.0	15.4	-	15.7	16.0	16.5	-	16.6	17.0	17.4	-	17.5	17.9	18.4	-	18.4	18.8	19.3	-						
	Hi PR	231	249	263	-	260	279	295	-	295	318	336	-	336	362	382	-	378	407	430	-	418	450	475	-						
Lo PR	110	118	128	-	117	124	136	-	121	129	141	-	127	136	148	-	134	142	155	-	138	147	160	-							
1400	MBh	40.0	41.4	45.4	-	39.0	40.4	44.3	-	38.1	39.5	43.3	-	37.2	38.5	42.2	-	35.3	36.6	40.1	-	32.7	33.9	37.1	-						
	S/T	0.70	0.59	0.41	-	0.73	0.61	0.42	-	0.75	0.63	0.43	-	0.77	0.65	0.45	-	0.80	0.67	0.46	-	0.81	0.68	0.47	-						
	DT	18	16	12	-	19	16	12	-	19	16	12	-	19	16	12	-	19	16	12	-	17	15	11	-						
	kW	3.11	3.17	3.26	-	3.33	3.39	3.49	-	3.52	3.59	3.69	-	3.68	3.76	3.87	-	3.82	3.90	4.02	-	3.95	4.03	4.15	-						
	Amps	13.5	13.8	14.1	-	14.4	14.7	15.0	-	15.4	15.7	16.1	-	16.2	16.6	17.0	-	17.1	17.5	18.0	-	18.0	18.3	18.9	-						
	Hi PR	224	242	255	-	252	271	286	-	286	308	326	-	326	351	371	-	367	395	417	-	406	436	461	-						
Lo PR	107	114	124	-	113	120	131	-	118	125	137	-	124	131	144	-	130	138	150	-	134	143	156	-							
1800	MBh	45.3	46.7	50.5	54.2	44.3	45.6	49.4	53.0	43.2	44.5	48.2	51.7	42.2	43.4	47.0	50.4	40.1	41.3	44.7	47.9	37.1	38.2	41.4	44.4						
	S/T	0.87	0.78	0.59	0.38	0.90	0.81	0.61	0.39	0.93	0.83	0.63	0.40	0.96	0.85	0.65	0.42	0.99	0.89	0.67	0.43	1.00	0.89	0.68	0.44						
	DT	20	19	15	11	20	19	15	11	20	19	15	11	21	19	16	11	21	20	19	15	11	19	17	14	10					
	kW	3.23	3.29	3.38	3.48	3.45	3.52	3.62	3.73	3.65	3.73	3.84	3.95	3.83	3.91	4.02	4.15	3.98	4.06	4.18	4.31	4.10	4.19	4.32	4.46						
	Amps	14.0	14.3	14.7	15.1	14.9	15.2	15.6	16.1	16.0	16.3	16.7	17.3	16.9	17.2	17.7	18.3	17.8	18.2	18.7	19.3	18.7	19.1	19.6	20.3						
	Hi PR	236	254	268	280	265	285	301	314	301	324	342	357	343	369	390	407	386	415	439	458	427	459	485	506						
Lo PR	113	120	131	139	119	127	138	147	124	132	144	153	130	138	151	161	136	145	158	169	141	150	164	174							
1600	MBh	44.0	45.3	49.1	52.7	43.0	44.3	47.9	51.4	42.0	43.2	46.8	50.2	41.0	42.2	45.6	49.0	38.9	40.1	43.4	46.5	36.0	37.1	40.2	43.1						
	S/T	0.83	0.74	0.56	0.36	0.86	0.77	0.58	0.37	0.88	0.79	0.60	0.38	0.91	0.82	0.62	0.40	0.95	0.85	0.64	0.41	0.95	0.85	0.65	0.42						
	DT	21	19	16	11	21	20	16	11	21	20	16	11	21	20	16	11	21	20	19	16	11	20	18	15	10					
	kW	3.21	3.27	3.36	3.46	3.43	3.50	3.60	3.71	3.62	3.70	3.81	3.92	3.80	3.88	3.99	4.12	3.95	4.03	4.15	4.28	4.07	4.16	4.29	4.42						
	Amps	13.9	14.2	14.5	15.0	14.8	15.1	15.5	16.0	15.9	16.2	16.6	17.1	16.8	17.1	17.6	18.1	17.7	18.0	18.5	19.1	18.5	18.9	19.5	20.1						
	Hi PR	234	252	266	277	262	282	298	311	298	321	339	354	340	366	386	403	382	411	434	453	422	454	480	501						
Lo PR	112	119	130	138	118	125	137	146	123	130	142	152	129	137	149	159	135	144	157	167	140	148	162	173							
1400	MBh	40.6	41.8	45.3	48.6	39.7	40.9	44.2	47.5	38.7	39.9	43.2	46.3	37.8	38.9	42.1	45.2	35.9	37.0	40.0	42.9	33.3	34.2	37.1	39.8						
	S/T	0.80	0.72	0.54	0.35	0.83	0.74	0.56	0.36	0.85	0.76	0.58	0.37	0.88	0.79	0.59	0.38	0.91	0.82	0.62	0.40	0.92	0.82	0.62	0.40						
	DT	21	20	16	11	22	20	16	11	22	20	16	11	22	20	16	11	22	20	16	11	20	19	15	10						
	kW	3.14	3.20	3.29	3.38	3.35	3.42	3.52	3.62	3.54	3.61	3.72	3.83	3.71	3.79	3.90	4.02	3.85	3.93	4.05	4.18	3.98	4.06	4.18	4.32						
	Amps	13.6	13.9	14.2	14.7	14.5	14.8	15.2	15.6	15.5	15.8	16.2	16.7	16.4	16.7	17.2	17.7	17.2	17.6	18.1	18.7	18.1	18.5	19.0	19.6						
	Hi PR	227	244	258	269	254	274	289	302	289	311	329	343	330	355	375	391	371	399	421	439	410	441	466	486						
Lo PR	108	115	126	134	114	122	133	141	119	126	138	147	125	133	145	154	131	139	152	162	135	144	157	167							

IDB: Entering Indoor Dry Bulb Temperature
 High and low pressures are measured at the liquid and suction access fittings.
 Shaded area reflects ACCA (TVA) conditions
 Amps: Unit amps (compressor+ evaporator + condenser fan motors).
 kW = Total system power

EXPANDED COOLING DATA — DP13CH4841** (CONT.)

IDB	AIRFLOW	OUTDOOR AMBIENT TEMPERATURE												ENTERING INDOOR WET BULB TEMPERATURE													
		65°F				75°F				85°F				95°F				105°F				115°F					
		59	63	67	71	59	63	67	71	59	63	67	71	59	63	67	71	59	63	67	71	59	63	67	71		
80	1800	MBh	46.1	47.2	50.4	53.9	45.1	46.1	49.2	52.6	44.0	45.0	48.0	51.4	42.9	43.9	46.9	50.1	40.8	41.7	44.5	47.6	37.8	38.6	41.2	44.1	
		S/T	0.96	0.90	0.73	0.55	1.00	0.93	0.76	0.56	1.00	0.95	0.78	0.58	1.00	1.00	0.80	0.60	1.00	1.00	0.83	0.62	1.00	1.00	0.84	0.63	
	1600	DT	23	22	19	15	23	22	19	15	22	22	19	15	22	22	19	15	21	21	19	15	19	20	18	14	
		kW	3.25	3.31	3.41	3.51	3.48	3.55	3.65	3.76	3.68	3.75	3.87	3.98	3.86	3.94	4.06	4.18	4.01	4.09	4.22	4.35	4.14	4.22	4.35	4.49	
	1400	Amps	14.1	14.4	14.8	15.2	15.0	15.3	15.7	16.2	16.1	16.4	16.9	17.4	17.0	17.4	17.9	18.4	17.9	18.3	18.8	19.4	18.8	19.2	19.8	20.4	
		Hi PR	238	257	271	283	268	288	304	317	304	328	346	361	347	373	394	411	390	420	443	462	431	464	490	511	
	85	1800	Lo PR	114	121	132	141	120	128	140	149	125	133	145	155	131	140	153	162	138	146	160	170	142	151	165	176
			MBh	44.8	45.8	48.9	52.3	43.8	44.7	47.8	51.1	42.7	43.7	46.6	49.9	41.7	42.6	45.5	48.6	39.6	40.5	43.2	46.2	36.7	37.5	40.0	42.8
	80	1600	S/T	0.91	0.85	0.70	0.52	0.94	0.89	0.72	0.54	0.97	0.91	0.74	0.55	1.00	0.94	0.76	0.57	1.00	0.97	0.79	0.59	1.00	0.98	0.80	0.60
			DT	23	22	20	16	24	23	20	16	24	23	20	16	24	23	20	16	23	23	20	16	21	21	18	15
1400		kW	3.23	3.29	3.38	3.48	3.45	3.52	3.62	3.73	3.65	3.73	3.84	3.95	3.83	3.91	4.02	4.15	3.98	4.06	4.18	4.31	4.11	4.19	4.32	4.46	
		Amps	14.0	14.3	14.7	15.1	14.9	15.2	15.6	16.1	16.0	16.3	16.7	17.3	16.9	17.2	17.7	18.3	17.8	18.2	18.7	19.3	18.7	19.1	19.6	20.3	
85		1600	Hi PR	236	254	268	280	265	285	301	314	301	324	342	357	343	369	390	407	386	415	439	458	427	459	485	506
			Lo PR	113	120	131	139	119	127	138	147	124	132	144	153	130	138	151	161	136	145	158	169	141	150	164	174
85		1400	MBh	41.4	42.3	45.1	48.3	40.4	41.3	44.1	47.1	39.4	40.3	43.0	46.0	38.5	39.3	42.0	44.9	36.5	37.3	39.9	42.6	33.9	34.6	37.0	39.5
			S/T	0.88	0.82	0.67	0.50	0.91	0.85	0.70	0.52	0.93	0.88	0.71	0.53	0.96	0.90	0.74	0.55	1.00	0.94	0.76	0.57	1.01	0.95	0.77	0.58
85		1800	DT	24	23	20	16	24	23	20	16	24	23	20	16	24	23	20	16	24	23	20	16	22	21	19	15
			kW	3.16	3.22	3.31	3.41	3.38	3.44	3.54	3.65	3.57	3.64	3.75	3.86	3.74	3.82	3.93	4.05	3.88	3.96	4.08	4.21	4.01	4.09	4.22	4.35
	1600	Amps	13.7	14.0	14.3	14.8	14.6	14.9	15.3	15.7	15.6	15.9	16.4	16.9	16.5	16.8	17.3	17.9	17.4	17.7	18.2	18.8	18.2	18.6	19.2	19.8	
		Hi PR	229	246	260	271	257	277	292	305	292	315	332	346	333	358	378	395	375	403	426	444	414	445	470	490	
	1400	Lo PR	109	116	127	135	116	123	134	143	120	128	139	149	126	134	146	156	132	141	154	163	137	145	159	169	
		MBh	47.0	47.9	50.1	53.5	45.9	46.7	49.0	52.2	44.8	45.6	47.8	51.0	43.7	44.5	46.6	49.7	41.5	42.3	44.3	47.3	38.4	39.2	41.0	43.8	
	85	1600	S/T	1.00	0.97	0.87	0.71	1.00	1.00	0.90	0.73	1.00	1.00	0.93	0.75	1.00	1.00	0.96	0.78	1.00	1.00	0.99	0.81	1.00	1.00	1.00	0.81
			DT	24	24	22	19	23	24	23	20	23	23	23	20	22	23	23	20	21	22	22	19	20	20	21	18
	85	1800	kW	3.28	3.34	3.43	3.54	3.50	3.57	3.68	3.79	3.71	3.78	3.90	4.02	3.89	3.97	4.09	4.21	4.04	4.12	4.25	4.38	4.17	4.26	4.39	4.53
			Amps	14.2	14.5	14.9	15.3	15.1	15.4	15.9	16.4	16.2	16.5	17.0	17.5	17.1	17.5	18.0	18.6	18.1	18.5	19.0	19.6	19.0	19.4	20.0	20.6
1600		Hi PR	241	259	274	285	270	291	307	320	307	331	349	364	350	377	398	415	394	424	448	467	435	468	495	516	
		Lo PR	115	122	134	142	121	129	141	150	126	134	147	156	133	141	154	164	139	148	161	172	144	153	167	178	
85		1400	MBh	45.6	46.5	48.7	51.9	44.5	45.4	47.5	50.7	43.5	44.3	46.4	49.5	42.4	43.2	45.3	48.3	40.3	41.1	43.0	45.9	37.3	38.0	39.8	42.5
			S/T	0.96	0.92	0.83	0.67	0.99	0.96	0.86	0.70	1.00	0.98	0.88	0.72	1.00	1.00	0.91	0.74	1.00	1.00	0.95	0.77	1.00	1.00	0.96	0.77
85		1800	DT	25	25	23	20	25	25	24	20	25	25	24	20	24	25	24	21	23	24	23	20	21	22	22	19
			kW	3.25	3.31	3.41	3.51	3.48	3.55	3.65	3.76	3.68	3.75	3.87	3.98	3.86	3.94	4.06	4.18	4.01	4.09	4.22	4.35	4.14	4.22	4.35	4.49
		1600	Amps	14.1	14.4	14.8	15.2	15.0	15.3	15.7	16.2	16.1	16.4	16.9	17.4	17.0	17.4	17.9	18.4	17.9	18.3	18.8	19.4	18.8	19.2	19.8	20.4
			Hi PR	238	257	271	283	268	288	304	317	304	328	346	361	347	373	394	411	390	420	443	462	431	464	490	511
	1400	Lo PR	114	121	132	141	120	128	140	149	125	133	145	155	131	140	153	162	138	146	160	170	142	151	165	176	
		MBh	42.1	42.9	44.9	47.9	41.1	41.9	43.9	46.8	40.1	40.9	42.8	45.7	39.1	39.9	41.8	44.6	37.2	37.9	39.7	42.4	34.4	35.1	36.8	39.2	
	85	1600	S/T	0.92	0.89	0.80	0.65	0.95	0.92	0.83	0.67	0.98	0.94	0.85	0.69	1.00	0.97	0.88	0.71	1.00	1.00	0.91	0.74	1.00	1.00	0.92	0.75
			DT	25	25	24	20	26	25	24	21	26	25	24	21	26	26	24	21	24	25	24	21	23	23	22	19
	85	1400	kW	3.18	3.24	3.33	3.43	3.40	3.47	3.57	3.68	3.60	3.67	3.78	3.89	3.77	3.84	3.96	4.08	3.91	3.99	4.12	4.24	4.04	4.12	4.25	4.38
			Amps	13.8	14.1	14.4	14.9	14.7	15.0	15.4	15.9	15.7	16.0	16.5	17.0	16.6	17.0	17.4	18.0	17.5	17.9	18.4	19.0	18.4	18.8	19.3	20.0
85	1400	Hi PR	231	249	263	274	260	279	295	308	295	318	335	350	336	362	382	399	378	407	430	448	418	450	475	495	
		Lo PR	110	117	128	137	117	124	136	144	121	129	141	150	127	136	148	158	133	142	155	165	138	147	160	171	

IDB: Entering Indoor Dry Bulb Temperature
 High and low pressures are measured at the liquid and suction access fittings.
 Shaded area reflects AHRI (TVA) conditions.
 Amps: Unit amps (compressor+ evaporator + condenser fan motors).
 kW = Total system power

EXPANDED COOLING DATA — DP13CH6041**

IDB	AIRFLOW	OUTDOOR AMBIENT TEMPERATURE																								
		65°F				75°F				85°F				95°F				105°F				115°F				
		59	63	67	71	59	63	67	71	59	63	67	71	59	63	67	71	59	63	67	71	59	63	67	71	
70	1948	MBh	56.3	58.4	64.0	-	55.0	57.0	62.5	-	53.7	55.7	61.0	-	52.4	54.3	59.5	-	49.8	51.6	56.5	-	46.1	47.8	52.4	-
		S/T	0.71	0.59	0.41	-	0.74	0.62	0.43	-	0.76	0.63	0.44	-	0.78	0.65	0.45	-	0.81	0.68	0.47	-	0.82	0.68	0.47	-
	ΔT	19	16	12	-	19	17	13	-	19	17	13	-	19	17	13	-	19	16	13	-	18	15	12	-	
	kW	4.17	4.26	4.39	-	4.49	4.59	4.73	-	4.77	4.88	5.03	-	5.02	5.13	5.30	-	5.23	5.35	5.53	-	5.41	5.54	5.72	-	
	Amps	17.6	17.9	18.4	-	18.8	19.2	19.8	-	20.2	20.7	21.3	-	21.5	22.0	22.6	-	22.7	23.2	23.9	-	24.0	24.5	25.2	-	
	HI PR	249	268	283	-	279	300	317	-	317	341	361	-	361	389	411	-	407	438	462	-	449	483	510	-	
	LO PR	109	116	127	-	116	123	134	-	120	128	140	-	126	134	147	-	132	141	154	-	137	146	159	-	
	1728	MBh	54.7	56.7	62.1	-	53.4	55.4	60.7	-	52.2	54.1	59.2	-	50.9	52.7	57.8	-	48.3	50.1	54.9	-	44.8	46.4	50.9	-
		S/T	0.68	0.57	0.39	-	0.70	0.59	0.41	-	0.72	0.60	0.42	-	0.75	0.62	0.43	-	0.77	0.65	0.45	-	0.78	0.65	0.45	-
	ΔT	20	17	13	-	20	17	13	-	20	17	13	-	20	17	13	-	20	17	13	-	19	16	12	-	
kW	4.14	4.22	4.36	-	4.45	4.55	4.69	-	4.73	4.84	4.99	-	4.98	5.09	5.26	-	5.19	5.30	5.48	-	5.37	5.49	5.67	-		
Amps	17.4	17.8	18.3	-	18.7	19.0	19.6	-	20.1	20.5	21.1	-	21.3	21.8	22.4	-	22.5	23.0	23.7	-	23.8	24.3	25.0	-		
HI PR	246	265	280	-	276	297	314	-	314	338	357	-	358	385	407	-	403	433	457	-	445	479	505	-		
LO PR	108	115	126	-	114	122	133	-	119	127	138	-	125	133	145	-	131	139	152	-	135	144	157	-		
1518	MBh	50.5	52.3	57.3	-	49.3	51.1	56.0	-	48.1	49.9	54.7	-	47.0	48.7	53.3	-	44.6	46.2	50.7	-	41.3	42.8	46.9	-	
	S/T	0.65	0.55	0.38	-	0.68	0.57	0.39	-	0.70	0.58	0.40	-	0.72	0.60	0.42	-	0.75	0.62	0.43	-	0.75	0.63	0.44	-	
ΔT	20	17	13	-	20	18	13	-	20	18	13	-	20	18	13	-	20	17	13	-	19	16	12	-		
kW	4.04	4.12	4.25	-	4.35	4.44	4.58	-	4.62	4.72	4.87	-	4.86	4.96	5.12	-	5.06	5.17	5.34	-	5.23	5.35	5.53	-		
Amps	17.0	17.4	17.9	-	18.2	18.6	19.1	-	19.6	20.0	20.6	-	20.8	21.2	21.9	-	22.0	22.5	23.1	-	23.1	23.7	24.4	-		
HI PR	239	257	271	-	268	288	304	-	305	328	346	-	347	374	394	-	390	420	444	-	431	464	490	-		
LO PR	105	112	122	-	111	118	129	-	115	123	134	-	121	129	141	-	127	135	148	-	131	140	153	-		

75	1948	MBh	57.3	59.0	63.9	68.5	56.0	57.6	62.4	66.9	54.6	56.3	60.9	65.3	53.3	54.9	59.4	63.8	50.6	52.1	56.4	60.6	46.9	48.3	52.3	56.1
		S/T	0.81	0.72	0.55	0.35	0.84	0.75	0.57	0.37	0.86	0.77	0.58	0.37	0.89	0.79	0.60	0.39	0.92	0.82	0.62	0.40	0.93	0.83	0.63	0.40
	ΔT	22	20	17	11	22	20	17	12	22	20	17	12	22	21	17	12	22	20	17	11	21	19	16	11	
	kW	4.20	4.29	4.43	4.57	4.53	4.62	4.77	4.93	4.81	4.92	5.08	5.24	5.06	5.17	5.34	5.52	5.28	5.39	5.57	5.76	5.46	5.58	5.77	5.97	
	Amps	17.7	18.1	18.6	19.2	19.0	19.4	19.9	20.6	20.4	20.9	21.5	22.2	21.7	22.1	22.8	23.6	22.9	23.4	24.1	25.0	24.2	24.7	25.5	26.4	
	HI PR	251	270	285	298	282	303	320	334	321	345	364	380	365	393	415	433	411	442	467	487	454	488	516	538	
	LO PR	111	118	128	137	117	124	136	144	121	129	141	150	128	136	148	158	134	142	155	165	138	147	161	171	
	1728	MBh	55.6	57.3	62.0	66.5	54.3	55.9	60.6	65.0	53.0	54.6	59.1	63.4	51.8	53.3	57.7	61.9	49.2	50.6	54.8	58.8	45.5	46.9	50.8	54.5
		S/T	0.77	0.69	0.52	0.34	0.80	0.72	0.54	0.35	0.82	0.73	0.56	0.36	0.85	0.76	0.57	0.37	0.88	0.79	0.60	0.38	0.89	0.79	0.60	0.39
	ΔT	23	21	17	12	23	21	17	12	23	21	17	12	23	21	18	12	23	21	17	12	21	20	16	11	
kW	4.17	4.26	4.39	4.53	4.49	4.59	4.73	4.89	4.77	4.88	5.03	5.20	5.02	5.13	5.30	5.48	5.23	5.35	5.53	5.71	5.42	5.54	5.72	5.92		
Amps	17.6	17.9	18.4	19.0	18.8	19.2	19.8	20.4	20.2	20.7	21.3	22.0	21.5	22.0	22.6	23.4	22.7	23.2	23.9	24.8	24.0	24.5	25.2	26.1		
HI PR	249	268	283	295	279	300	317	331	317	342	361	376	361	389	411	428	407	438	462	482	449	484	511	533		
LO PR	109	116	127	135	116	123	134	143	120	128	140	149	126	134	147	156	132	141	154	164	137	146	159	169		
1518	MBh	51.3	52.9	57.2	61.4	50.2	51.6	55.9	60.0	49.0	50.4	54.6	58.6	47.8	49.2	53.2	57.1	45.4	46.7	50.6	54.3	42.0	43.3	46.8	50.3	
	S/T	0.74	0.67	0.50	0.32	0.77	0.69	0.52	0.34	0.79	0.71	0.54	0.34	0.82	0.73	0.55	0.36	0.85	0.76	0.57	0.37	0.85	0.76	0.58	0.37	
ΔT	23	21	17	12	23	22	18	12	23	22	18	12	24	22	18	12	23	21	18	12	22	20	16	11		
kW	4.07	4.16	4.29	4.42	4.38	4.47	4.62	4.77	4.66	4.76	4.91	5.07	4.90	5.00	5.17	5.34	5.10	5.21	5.39	5.57	5.28	5.40	5.58	5.76		
Amps	17.1	17.5	18.0	18.6	18.4	18.7	19.3	19.9	19.7	20.2	20.8	21.5	21.0	21.4	22.1	22.8	22.2	22.6	23.3	24.1	23.3	23.9	24.6	25.5		
HI PR	241	260	274	286	271	291	308	321	308	331	350	365	351	377	398	416	394	424	448	468	436	469	495	517		
LO PR	106	113	123	131	112	119	130	139	117	124	135	144	122	130	142	151	128	137	149	159	133	141	154	164		

IDB: Entering Indoor Dry Bulb Temperature
 High and low pressures are measured at the liquid and suction access fittings.
 Shaded area reflects ACCA (TVA) conditions
 Amps: Unit amps (compressor+ evaporator + condenser fan motors).
 kW = Total system power

EXPANDED COOLING DATA — DP13CH6041** (CONT.)

IDB	AIRFLOW	OUTDOOR AMBIENT TEMPERATURE												ENTERING INDOOR WET BULB TEMPERATURE													
		65°F				75°F				85°F				95°F				105°F				115°F					
		59	63	67	71	59	63	67	71	59	63	67	71	59	63	67	71	59	63	67	71	59	63	67	71		
80	1948	MBh	58.3	59.6	63.7	68.1	57.0	58.2	62.2	66.5	55.6	56.8	60.7	64.9	54.3	55.4	59.2	63.3	51.5	52.7	56.3	60.1	47.7	48.8	52.1	55.7	
		S/T	0.89	0.83	0.68	0.51	0.92	0.86	0.70	0.52	0.94	0.88	0.72	0.54	1.00	0.91	0.74	0.56	1.00	0.95	0.77	0.58	1.00	0.96	0.78	0.58	
	1728	ΔT	24	23	20	16	25	24	21	16	25	24	21	16	26	24	21	17	24	24	20	16	23	22	19	15	
		kW	4.24	4.33	4.46	4.61	4.56	4.66	4.81	4.97	4.85	4.96	5.12	5.29	5.11	5.22	5.39	5.57	5.32	5.44	5.62	5.81	5.51	5.63	5.82	6.02	
	1518	Amps	17.8	18.2	18.7	19.4	19.1	19.5	20.1	20.8	20.6	21.0	21.7	22.4	21.8	22.3	23.0	23.8	23.1	23.6	24.4	25.2	24.4	24.9	25.7	26.6	
		HI PR	254	273	288	301	285	306	324	337	324	348	368	384	369	397	419	437	415	446	471	492	458	493	521	543	
	85	1948	LO PR	112	119	130	138	118	126	137	146	123	130	142	152	129	137	150	159	135	144	157	167	140	149	162	173
			MBh	56.6	57.9	61.8	66.1	55.3	56.5	60.4	64.5	54.0	55.2	58.9	63.0	52.7	53.8	57.5	61.5	50.0	51.1	54.6	58.4	46.3	47.4	50.6	54.1
	85	1728	S/T	0.85	0.79	0.65	0.48	0.88	0.82	0.67	0.50	0.90	0.84	0.69	0.51	0.93	0.87	0.71	0.53	0.96	0.90	0.74	0.55	0.97	0.91	0.74	0.55
			ΔT	26	24	21	17	26	25	22	17	26	25	22	17	26	25	22	17	26	25	21	17	24	23	20	16
1518		kW	4.20	4.29	4.43	4.57	4.53	4.62	4.77	4.93	4.81	4.92	5.08	5.24	5.06	5.17	5.35	5.52	5.28	5.39	5.57	5.76	5.46	5.58	5.77	5.97	
		Amps	17.7	18.1	18.6	19.2	19.0	19.4	19.9	20.6	20.4	20.9	21.5	22.2	21.7	22.1	22.8	23.6	22.9	23.4	24.1	25.0	24.2	24.7	25.5	26.4	
85		1948	HI PR	251	270	285	298	282	303	320	334	321	345	364	380	365	393	415	433	411	442	467	487	454	488	516	538
			LO PR	111	118	128	137	117	124	136	144	121	129	141	150	128	136	148	158	134	142	155	165	138	147	161	171
85		1728	MBh	52.3	53.4	57.1	61.0	51.0	52.2	55.7	59.6	49.8	50.9	54.4	58.2	48.6	49.7	53.1	56.7	46.2	47.2	50.4	53.9	42.8	43.7	46.7	49.9
			S/T	0.82	0.77	0.62	0.47	0.85	0.79	0.65	0.48	0.87	0.81	0.66	0.50	0.90	0.84	0.68	0.51	0.93	0.87	0.71	0.53	0.94	0.88	0.72	0.53
85		1948	ΔT	26	25	22	17	26	25	22	17	26	25	22	17	26	25	22	18	26	25	22	17	24	23	20	16
			kW	4.10	4.19	4.32	4.46	4.42	4.51	4.66	4.81	4.69	4.80	4.95	5.11	4.94	5.05	5.21	5.38	5.14	5.26	5.43	5.61	5.32	5.44	5.62	5.81
	1518	Amps	17.3	17.6	18.1	18.7	18.5	18.9	19.4	20.1	19.9	20.3	20.9	21.6	21.1	21.6	22.2	23.0	22.3	22.8	23.5	24.3	23.5	24.1	24.8	25.7	
		HI PR	244	262	277	289	273	294	311	324	311	335	353	369	354	381	402	420	398	429	453	472	440	474	500	522	
	85	1948	LO PR	107	114	125	133	113	121	132	140	118	125	137	146	124	132	144	153	130	138	151	160	134	143	156	166
			MBh	59.3	60.5	63.3	67.6	58.0	59.1	61.9	66.0	56.6	57.7	60.4	64.4	55.2	56.3	58.9	62.9	52.4	53.5	56.0	59.7	48.6	49.5	51.9	55.3
	85	1728	S/T	0.93	0.90	0.81	0.66	0.96	0.93	0.84	0.68	0.99	0.95	0.86	0.70	1.00	0.99	0.89	0.72	1.00	1.00	0.92	0.75	1.00	1.00	0.93	0.75
			ΔT	26	26	24	21	26	26	25	21	26	26	25	21	26	26	25	21	25	25	24	21	25	25	23	20
	85	1948	kW	4.27	4.36	4.50	4.64	4.60	4.70	4.85	5.01	4.89	5.00	5.16	5.33	5.15	5.26	5.43	5.62	5.37	5.49	5.67	5.86	5.55	5.68	5.87	6.07
			Amps	18.0	18.4	18.9	19.5	19.3	19.7	20.3	20.9	20.7	21.2	21.8	22.6	22.0	22.5	23.2	24.0	23.3	23.8	24.6	25.4	24.6	25.1	25.9	26.8
85	1728	HI PR	256	276	291	304	288	309	327	341	327	352	372	388	372	401	423	441	419	451	476	497	463	498	526	549	
		LO PR	113	120	131	139	119	127	138	147	124	132	144	153	130	138	151	161	136	145	158	169	141	150	164	174	
85	1948	MBh	57.6	58.7	61.5	65.6	56.3	57.4	60.1	64.1	54.9	56.0	58.6	62.6	53.6	54.6	57.2	61.0	50.9	51.9	54.4	58.0	47.2	48.1	50.3	53.7	
		S/T	0.89	0.86	0.77	0.63	0.92	0.89	0.80	0.65	0.94	0.91	0.82	0.67	0.97	0.94	0.85	0.69	1.00	0.98	0.88	0.71	1.00	0.98	0.89	0.72	
85	1728	ΔT	27	27	25	22	28	27	26	22	28	27	26	22	28	27	26	22	27	27	25	22	25	25	24	21	
		kW	4.24	4.33	4.46	4.61	4.56	4.66	4.81	4.97	4.85	4.96	5.12	5.29	5.11	5.22	5.39	5.57	5.32	5.44	5.62	5.81	5.51	5.63	5.82	6.02	
85	1518	Amps	17.8	18.2	18.7	19.4	19.1	19.5	20.1	20.8	20.6	21.0	21.7	22.4	21.8	22.3	23.0	23.8	23.1	23.6	24.4	25.2	24.4	24.9	25.7	26.6	
		HI PR	254	273	288	301	285	306	324	337	324	348	368	384	369	397	419	437	415	446	471	492	458	493	521	543	
85	1948	LO PR	112	119	130	138	118	126	137	146	123	130	142	152	129	137	150	159	135	144	157	167	140	149	162	173	
		MBh	53.2	54.2	56.8	60.6	51.9	52.9	55.4	59.2	50.7	51.7	54.1	57.7	49.5	50.4	52.8	56.3	47.0	47.9	50.2	53.5	43.5	44.4	46.5	49.6	
85	1728	S/T	0.86	0.83	0.75	0.60	0.89	0.86	0.77	0.63	0.91	0.88	0.79	0.64	0.94	0.91	0.82	0.66	0.97	0.94	0.85	0.69	0.98	0.95	0.86	0.69	
		ΔT	28	27	26	22	28	27	26	22	28	27	26	22	28	28	26	23	28	27	26	22	26	25	24	21	
85	1518	kW	4.14	4.22	4.36	4.49	4.45	4.55	4.69	4.85	4.73	4.83	4.99	5.16	4.98	5.09	5.25	5.43	5.19	5.30	5.48	5.66	5.37	5.49	5.67	5.86	
		Amps	17.4	17.8	18.3	18.9	18.6	19.0	19.6	20.2	20.1	20.5	21.1	21.8	21.3	21.8	22.4	23.2	22.5	23.0	23.7	24.6	23.7	24.3	25.0	25.9	
85	1948	HI PR	246	265	280	292	276	297	314	327	314	338	357	372	358	385	406	424	402	433	457	477	445	478	505	527	
		LO PR	108	115	126	134	114	122	133	142	119	127	138	147	125	133	145	155	131	139	152	162	135	144	157	168	

IDB: Entering Indoor Dry Bulb Temperature
 High and low pressures are measured at the liquid and suction access fittings.
 Shaded area reflects AHRI (TVA) conditions.
 Amps: Unit amps (compressor+ evaporator + condenser fan motors).
 kW = Total system power

AIRFLOW DATA

MODEL	MOTOR SPEED	VOLTS		E.S.P (IN. OF H ₂ O)							
				0.1	0.2	0.3	0.4	0.5	0.6	0.7	0.8
DP13CH 2441**	Low	230	CFM Watts	680 155	640 150	590 145	555 140	505 130	440 120	340 110	- -
	Med	230	CFM Watts	895 230	855 220	815 215	755 205	700 195	630 180	545 170	390 145
	High	230	CFM Watts	1,185 350	1,130 340	1,070 325	1,010 310	930 295	850 280	760 265	650 245
DP13CH 3041**	Low	230	CFM Watts	1,150 340	1,080 330	1,025 315	975 305	925 295	845 280	- -	- -
	Med	230	CFM Watts	1,335 425	1,275 415	1,205 400	1,135 385	1,075 370	985 350	910 330	845 310
	High	230	CFM Watts	1,435 485	1,355 465	1,280 455	1,200 435	1,120 415	1,030 400	950 385	875 370
DP13CH 3641**	Low	230	CFM Watts	1,180 335	1,125 325	1,075 315	1,020 305	955 295	875 275	655 240	- -
	Med	230	CFM Watts	1,350 435	1,280 420	1,205 405	1,130 385	1,050 375	985 350	910 330	845 310
	High	230	CFM Watts	1,450 495	1,370 480	1,290 465	1,205 440	1,130 425	1,040 400	960 385	885 370
DP13CH 4241**	Low	230	CFM Watts	1,425 450	1,410 445	1,355 430	1,310 420	1,245 405	1,170 390	1,080 370	- -
	Med	230	CFM Watts	1,620 550	1,595 540	1,545 525	1,485 510	1,425 495	1,345 475	1,250 450	1,160 425
	High	230	CFM Watts	1,945 765	1,935 755	1,875 735	1,800 715	1,730 695	1,635 670	1,535 640	1,440 615
DP13CH 4841**	Low	230	CFM Watts	1,425 450	1,410 445	1,355 430	1,310 420	1,245 405	1,170 390	1,080 370	- -
	Med	230	CFM Watts	1,620 550	1,595 540	1,545 525	1,485 510	1,425 495	1,345 475	1,250 450	1,160 425
	High	230	CFM Watts	1,945 765	1,935 755	1,875 735	1,800 715	1,730 695	1,635 670	1,535 640	1,440 615
DP13CH 6041**	"T" 1 Low	230	CFM Watts	1,750 334	1,702 342	1,654 349	1,606 357	1,557 365	1,509 373	1,461 381	1,413 388
	"T" 2 Med	230	CFM Watts	1,967 482	1,919 490	1,871 498	1,823 506	1,774 513	1,726 521	1,678 529	1,630 537
	"T" 3 High	230	CFM Watts	2,106 577	2,058 585	2,009 592	1,961 600	1,913 608	1,865 616	1,817 624	1,768 631

NOTES

- Data shown is dry coil; wet coil pressure drop is approximate.
- 0.1" H₂O, for 2-row indoor coil; 0.2" H₂O, for 3-row indoor coil; and 0.3" H₂O, for 4-row indoor coil
- Data shown does not include filter pressure drop, approx. 0.08" H₂O.
- ALL MODELS SHOULD RUN NO LESS THAN 350 CFM / TON, USE HIGHER SPEED TAP OR NEXT SIZE LARGER BLOWER ASM. See Repair Parts list.
- Reduce airflow by 2% for 208V operation.

HEAT KIT ELECTRICAL DATA (BLOWER ONLY, HEAT MODE)

MODEL AND HEAT KIT USAGE	CIRCUIT #1		CIRCUIT #2		SINGLE-POINT KIT		ACTUAL KW / BTU@ 240V
	MCA ¹	MOP ²	MCA ¹	MOP ²	MCA ¹	MOP ²	
DP13CH2441**	1.9	---	---	---	--	--	---
HKR-05*, HKR-05C*	21 / 25	25 / 25	---	---	24 / 27	25 / 30	4.75 / 16,200
HKR-08*, HKR-08C*	32 / 36	35 / 40	---	---	33 / 38	35 / 40	7 / 23,800
HKR-10*, HKR-10C*	43 / 49	45 / 50	---	---	45 / 51	50 / 60	9.5 / 32,400
DP13CH3041**	2.3	---	---	---	--	--	---
HKR-05*, HKR-05C*	21 / 25	25 / 25	---	---	24 / 27	30 / 30	4.75 / 16,200
HKR-08*, HKR-08C*	32 / 36	35 / 40	---	---	34 / 39	40 / 40	7 / 23,800
HKR-10*, HKR-10C*	43 / 49	45 / 50	---	---	45 / 52	60 / 60	9.5 / 32,400
HKP-15C*	43 / 49	45 / 50	21 / 25	25 / 25	67 / 77	70 / 80	14.25 / 48,600
DP13CH3641**	2.3	---	---	---	--	--	---
HKR-05*, HKR-05C*	21 / 25	25 / 25	---	---	24 / 27	40 / 40	4.75 / 16,200
HKR-08*, HKR-08C*	32 / 36	35 / 40	---	---	34 / 39	40 / 40	7 / 23,800
HKR-10*, HKR-10C*	43 / 49	45 / 50	---	---	45 / 52	60 / 60	9.5 / 32,400
HKP-15C*	43 / 49	45 / 50	21 / 25	25 / 25	67 / 77	70 / 80	14.25 / 48,600
DP13CH4241**	3.6	---	---	---	--	--	---
HKR-05*, HKR-05C*	21 / 25	25 / 25	---	---	27	40 / 40	4.75 / 16,200
HKR-08*, HKR-08C*	32 / 36	35 / 40	---	---	34 / 39	40 / 40	7 / 23,800
HKR-10*, HKR-10C*	43 / 49	45 / 50	---	---	46 / 52	60 / 60	9.5 / 32,400
HKP-15C*	43 / 49	45 / 50	21 / 25	25 / 25	68 / 78	70 / 80	14.25 / 48,600
HKP-20C	43 / 49	45 / 50	43 / 49	45 / 50	90 / 103	90 / 110	19.0 / 64,800
DP13CH4841**	3.6	---	---	---	--	--	---
HKR-05*, HKR-05C*	21 / 25	25 / 25	---	---	29	45	4.75 / 16,200
HKR-08*, HKR-08C*	32 / 36	35 / 40	---	---	34 / 40	45	7 / 23,800
HKR-10*, HKR-10C*	43 / 49	45 / 50	---	---	46 / 53	60 / 60	9.5 / 32,400
HKP-15C	43 / 49	45 / 50	21 / 25	25 / 25	68 / 78	70 / 80	14.25 / 48,600
HKP-20C	43 / 49	45 / 50	43 / 49	45 / 50	90 / 103	90 / 110	19.0 / 64,800
DP13CH6041**	7.5	---	---	---	--	--	---
HKR-05*, HKR-05C*	21 / 25	25 / 25	---	---	40	60	4.75 / 16,200
HKR-08*, HKR-08C*	32 / 36	35 / 40	---	---	40	60	7 / 23,800
HKR-10*, HKR-10C*	43 / 49	45 / 50	---	---	48 / 54	60 / 60	9.5 / 32,400
HKP-15C	43 / 49	45 / 50	21 / 25	25 / 25	70 / 80	80 / 90	14.25 / 48,600
HKP-20C	43 / 49	45 / 50	43 / 49	45 / 50	92 / 105	100 / 110	19.0 / 64,800

¹ Minimum Circuit Ampacity @ 208 / 240 V

² Maximum Overcurrent Protection Device @ 208 / 240 V

* Revision level that may or may not be designated

C Circuit breaker option

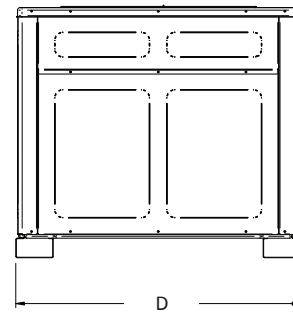
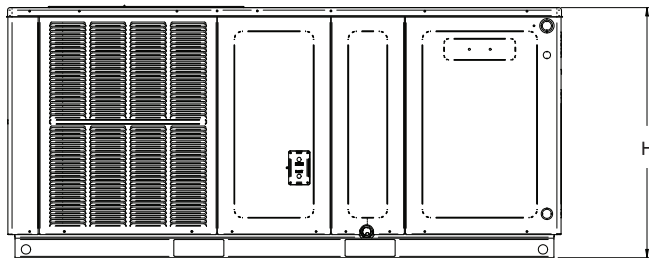
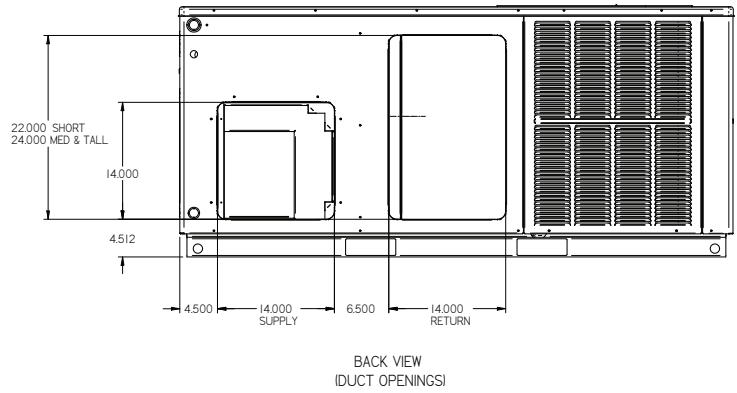
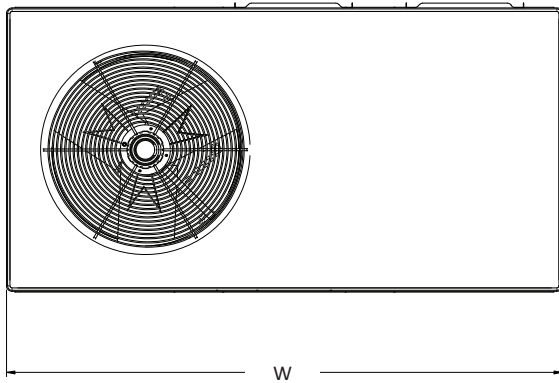
HKP-15C and HKP-20C replace HKR-15C and HKR-20C respectively to meet new UL1995 requirements.

SINGLE-POINT KIT ACCESSORY KITS

Select the single-point kit accessory based on the unit model.

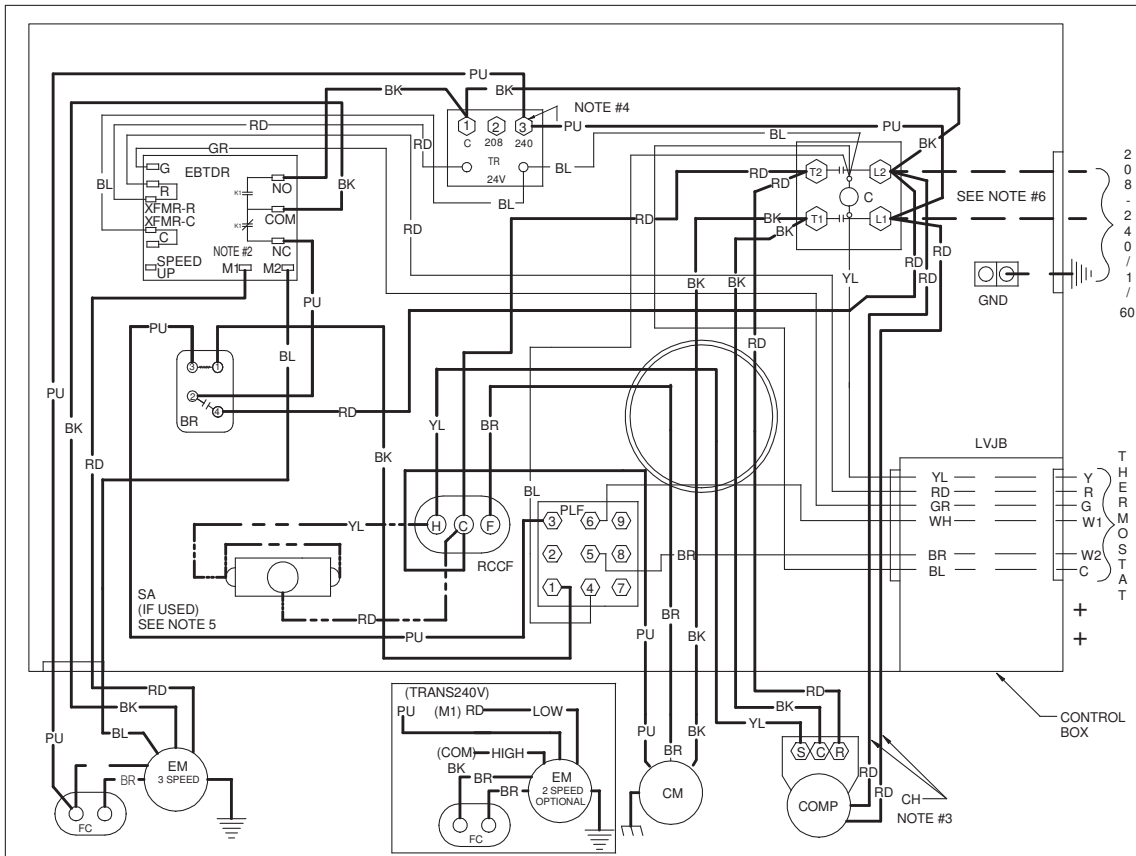
MODEL	SINGLE-POINT KIT
DP13CH2441**	SPK-30
DP13CH3041**	SPK-35
DP13CH3641**	SPK-40
DP13CH4241**	SPK-40
DP13CH4841**	SPK-50
DP13CH6041**	SPK-60

DIMENSIONS



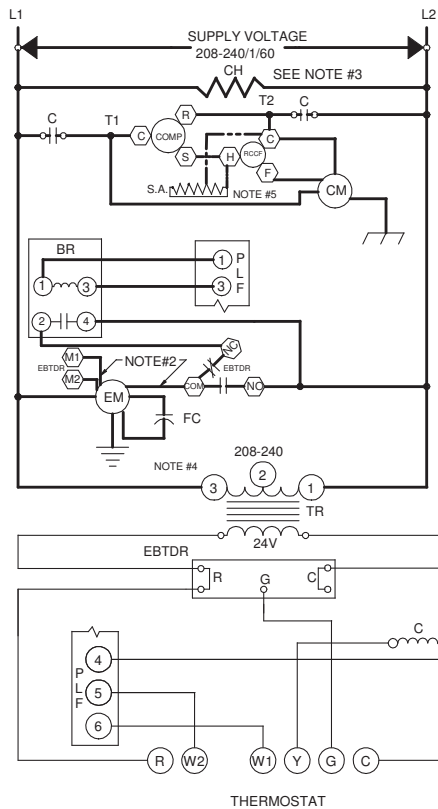
MODEL	DIMENSIONS			CHASSIS SIZE		
	W"	D"	H"	SMALL	MED.	LARGE
DP13CH2441**	66½	34	30	X		
DP13CH3041**	66½	34	30	X		
DP13CH3641**	66½	34	30	X		
DP13CH4241**	66½	34	35		X	
DP13CH4841**	66½	34	35		X	
DP13CH6041**	66½	34	38¾			X

WIRING DIAGRAM — DP13CH24-4841**



High Voltage: Disconnect all power before servicing or installing this unit. Multiple power sources may be present. Failure to do so may cause property damage, personal injury, or death.

WARNING



COMPONENT LEGEND

- BR BLOWER INTERLOCK RELAY
- C CONTACTOR
- CH CRANKCASE HEATER
- CM CONDENSER MOTOR
- COMP COMPRESSOR
- EBTD ELECTRONIC BLOWER TIME DELAY
- R RELAY
- EM EVAPORATOR MOTOR
- FC FAN CAPACITOR
- GND EQUIPMENT GROUND
- LVJB LOW VOLTAGE JUNCTION BOX
- PLF FEMALE PLUG / CONNECTOR
- RCCF RUN CAPACITOR FOR COMPRESSOR AND FAN
- SA START ASSIST
- TR TRANSFORMER

FACTORY WIRING

- LINE VOLTAGE
- LOW VOLTAGE
- OPTIMAL HIGH VOLTAGE
- VOLTAGE

FIELD WIRING

- - HIGH VOLTAGE
- - LOW VOLTAGE

WIRE CODE

- BK BLACK
- BL BLUE
- BR BROWN
- GR GREEN
- OR ORANGE
- PU PURPLE
- RD RED
- WH WHITE
- YL YELLOW

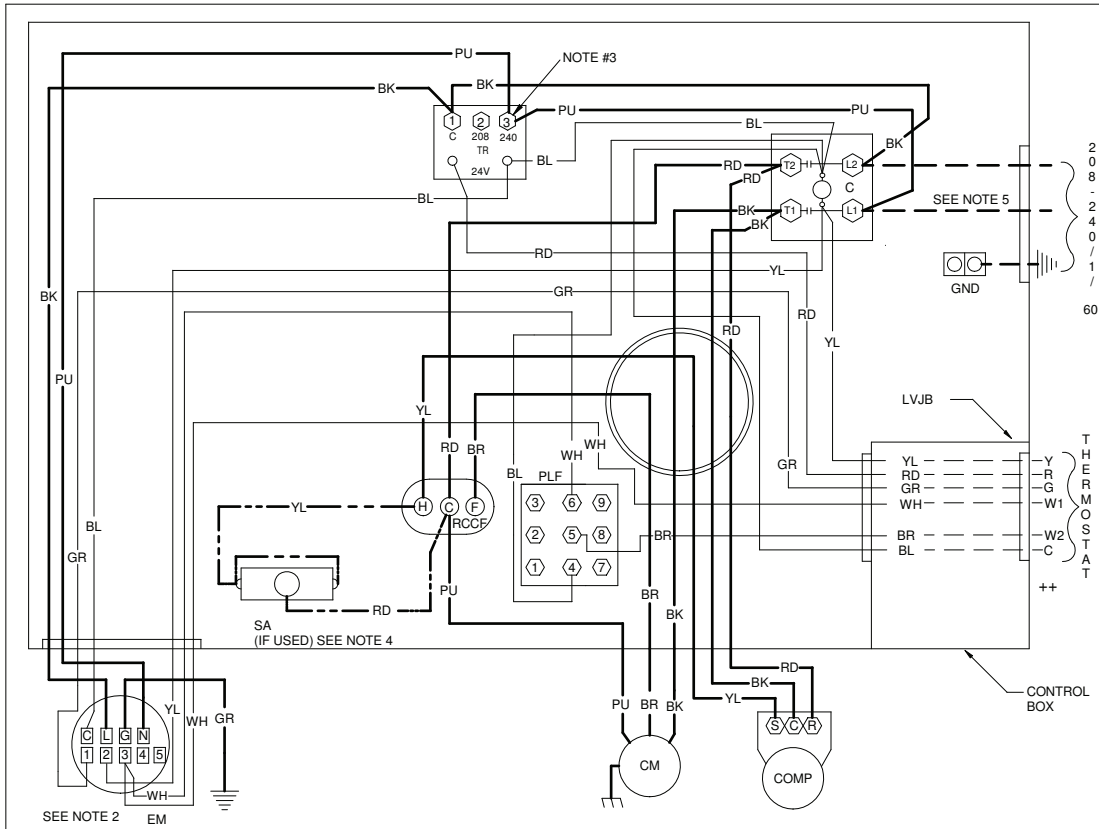
NOTES:

1. REPLACEMENT WIRE MUST BE SAME SIZE AND TYPE INSULATION AS ORIGINAL (AT LEAST 105°C) USE COPPER CONDUCTOR ONLY.
2. TO CHANGE EVAPORATOR MOTOR SPEED REPLACE LEAD ON EBTDR "COM" WITH LEAD ON EBTDR "M1" OR "M2"
3. CRANKCASE HEAT NOT SUPPLIED ON ALL UNITS.
4. FOR 208 VOLT TRANSFORMER OPERATION MOVE PURPLE WIRES FROM TERMINAL 3 TO TERMINAL 2 ON TRANSFORMER.
5. START ASSIST FACTOR EQUIPED WHEN REQUIRED
6. USE COPPER CONDUCTORS ONLY
- ++ USE N.E.C. CLASS 2 WIRE

SEE UNIT RATING PLATE FOR TYPE AND SIZE OF OVER CURRENT PROTECTION

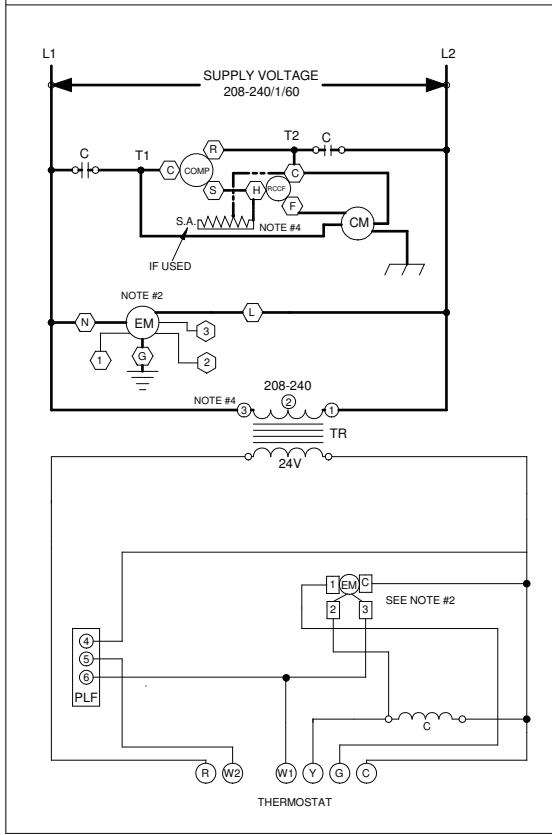
Wiring is subject to change. Always refer to the wiring diagram or the unit for the most up-to-date wiring.

WIRING DIAGRAM — DP13CH6041**



High Voltage: Disconnect all power before servicing or installing this unit. Multiple power sources may be present. Failure to do so may cause property damage, personal injury, or death.

WARNING



- COMPONENT LEGEND**
- C CONTACTOR
 - CM CONDENSER MOTOR
 - COMP COMPRESSOR
 - EM EVAPORATOR MOTOR
 - GND EQUIPMENT GROUND
 - LVJB LOW VOLTAGE JUNCTION BOX
 - PLF FEMALE PLUG / CONNECTOR
 - RCCF RUN CAPACITOR FOR COMPRESSOR AND FAN
 - SA START ASSIST
 - TR TRANSFORMER
- FACTORY WIRING**
- LINE VOLTAGE
 - LOW VOLTAGE
 - OPTIMAL HIGH VOLTAGE
 - VOLTAGE
- FIELD WIRING**
- - - HIGH VOLTAGE
 - - - LOW VOLTAGE
- WIRE CODE**
- BK BLACK
 - BL BLUE
 - BR BROWN
 - GR GREEN
 - OR ORANGE
 - PU PURPLE
 - RD RED
 - WH WHITE
 - YL YELLOW
- NOTES:**
1. REPLACEMENT WIRE MUST BE SAME SIZE AND TYPE INSULATION AS ORIGINAL (AT LEAST 105°C) USE COPPER CONDUCTOR ONLY.
 2. TO CHANGE EVAPORATOR MOTOR SPEED MOVE WHITE AND YELLOW LEADS FROM EM "2" AND "3" TO "4" AND "5". IF BOTH LEADS ARE ENERGIZED, THE HIGHER SPEED SETTING IS USED.
 3. FOR 208 VOLT TRANSFORMER OPERATION MOVE PURPLE WIRES FROM TERMINAL 3 TO TERMINAL 2 ON TRANSFORMER.
 4. START ASSIST FACTOR EQUIPPED WHEN REQUIRED
 5. USE COPPER CONDUCTORS ONLY.
- ++ USE N.E.C. CLASS 2 WIRE

SEE UNIT RATING PLATE FOR TYPE AND SIZE OF OVER CURRENT PROTECTION

208-240/1/60 0140G00407