



Submittal Data Sheet

0.75-Ton Wall Mounted Unit Cooling Only

FTK09NMVJURK09NMVJU

FEATURES

- IR controller included
- Titanium apatite photocatalytic air purification filter (option)
- Hot start technology
- Auto-restart (after power failure)

INDOOR UNIT



BENEFITS

- Quiet operation
- Low ambient cooling operation down to -4° F with field setting and wind baffle (KPW937E4)
- Operating Range - Cooling (50° - 114.8°)
- 12 year limited parts and compressor warranty with online registration
- 5 Year limited parts warranty for commercial applications

OUTDOOR UNIT





Submittal Data Sheet

0.75-Ton Wall Mounted Unit Cooling Only

FTK09NMVJURK09NMVJU

SYSTEM PERFORMANCE

Indoor Unit Model No.	FTK09NMVJU	Indoor Unit Name:	19 SEER AC DUCTLESS ID 3/4 TON
Outdoor Unit Model No.	RK09NMVJU	Outdoor Unit Name:	19 SEER AC DUCTLESS OD 3/4 TON
Rated Cooling Capacity (Btu/hr):	9,000	Rated Cooling Conditions:	Indoor (°F DB/WB): 80 / 67 Ambient (°F DB/WB): 95 / 75
Sensible Capacity (Btu/hr):	8,170	Rated Piping Length(ft):	25
Max/Min Cooling Capacity (Btu/hr):	10,200 / 4,400	Rated Height Difference (ft):	49.00
Cooling Input Power (kW):	0.720	Rated Heating Conditions:	Indoor (°F DB/WB): 70 / 70 Ambient (°F DB/WB): 47 / 43
SEER (Non-Ducted/Ducted):	19.00 /		
EER (Non-Ducted/Ducted):	12.50 /	Heating COP (Non-Ducted/Ducted):	3.7 /

SYSTEM DETAILS

Refrigerant Type:	R-410A	Cooling Operation Range (°F DB):	50 - 115
Holding Refrigerant Charge (lbs):	1.5	Heating Operation Range (°F WB):	-
Additional Charge (lb/ft):	0.01	Max. Pipe Length (Vertical) (ft):	49
Pre-charge Piping (Length) (ft):	32	Cooling Range w/Baffle (°F DB):	0 - 115
Max. Pipe Length (Total) (ft):	66	Heating Range w/Baffle (°F WB):	-
Max Height Separation (Ind to Ind ft):	49		



Submittal Data Sheet

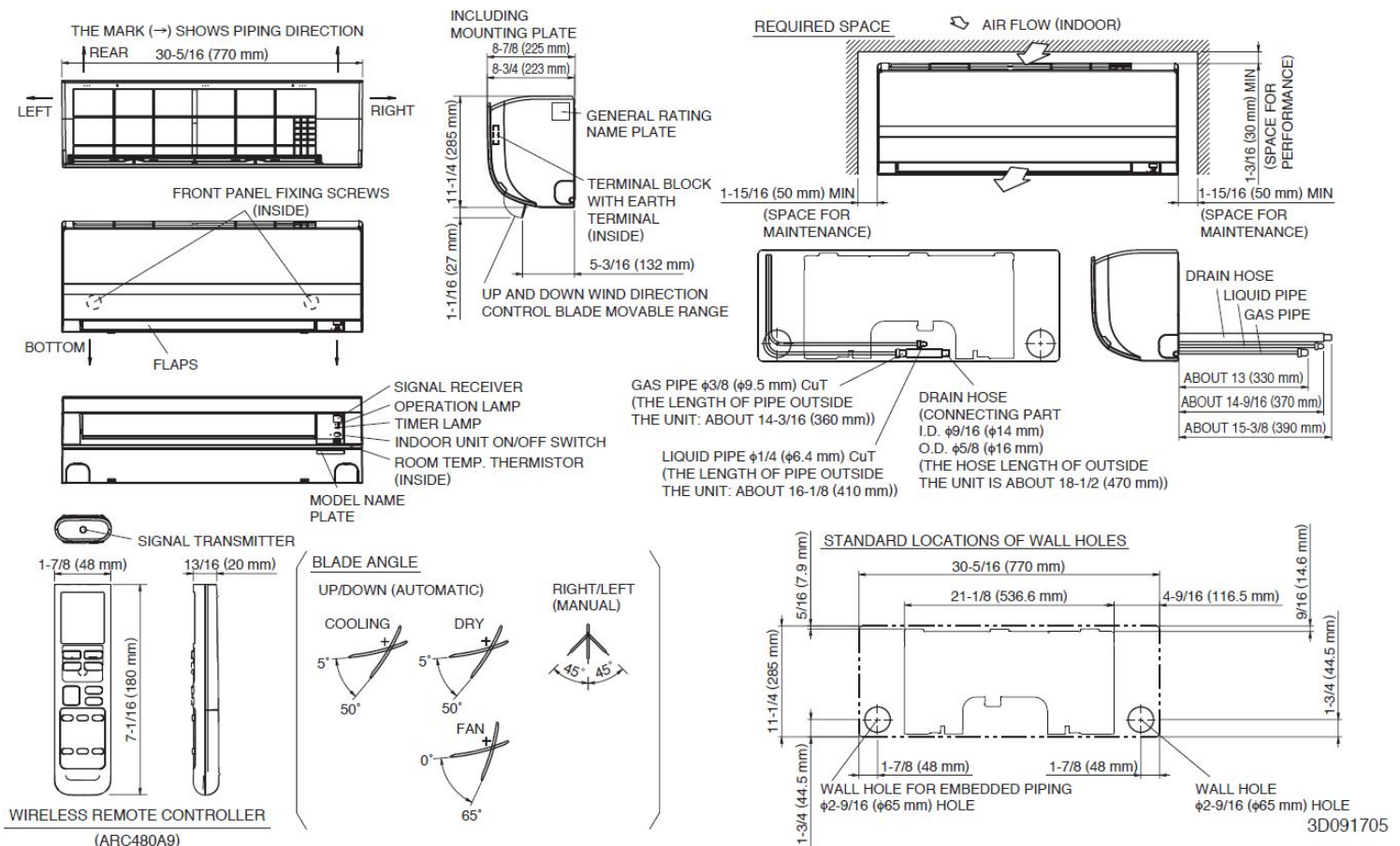
0.75-Ton Wall Mounted Unit Cooling Only

FTK09NMVJURK09NMVJU

INDOOR UNIT DETAILS

Power Supply (V/Hz/Ph):	208-230 / 60 / 1	Airflow Rate (H/M/L/SL) (CFM):	417/297/244/141
Power Supply Connections:	See Outdoor Unit for Electrical Specs	Moisture Removal (Gal/hr):	0.3
Min. Circuit Amps MCA (A):		Gas Pipe Connection (inch):	3/8
Max Overcurrent Protection (MOP) (A):		Liquid Pipe Connection (inch):	1/4
Dimensions (HxWxD) (in):	11-1/4 x 30-5/16 x 8-3/4	Condensate Connection (inch):	5/8
Panel (HxWxD) (in):		Sound Pressure (H/M/L/SL) (dBA):	43/36/30/19
Net Weight (lb):	18	Sound Power Level (dBA):	
Panel Weight (lb):		Ext. Static Pressure (Rated/Max) (inWg):	/

DIMENSIONAL DRAWING - INDOOR UNIT



Daikin North America LLC, 5151 San Felipe, Suite 500, Houston, TX, 77056

Daikin City Generated Submittal Data

www.daikinac.com www.daikincomfort.com

(Daikin's products are subject to continuous improvements. Daikin reserves the right to modify product design, specifications and information in this data sheet without notice and without incurring any obligations)

Submittal Date: 1/13/2017 6:37:01 AM

Page 3 of 4

Submittal Data Sheet

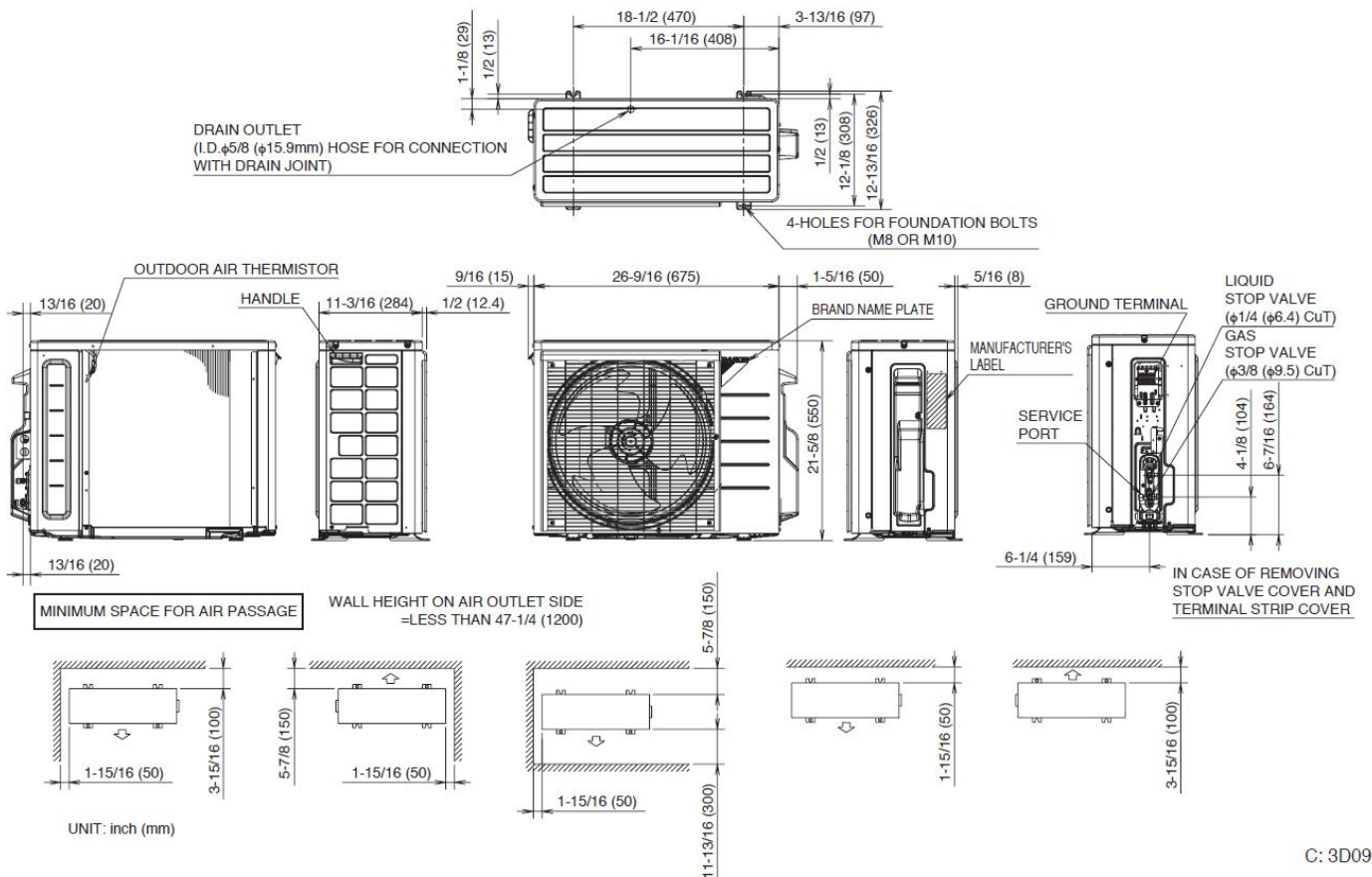
0.75-Ton Wall Mounted Unit Cooling Only

FTK09NMVJURK09NMVJU

OUTDOOR UNIT DETAILS

Power Supply (V/Hz/Ph):	208-230 / 60 / 1	Compressor Type:	Inverter
Power Supply Connections:	L1, L2, Ground	Capacity Control Range (%):	-
Min. Circuit Amps MCA (A):	12.10	Airflow Rate (H) (CFM):	1,102
Max Overcurrent Protection (MOP) (A):	15.00	Gas Pipe Connection (inch):	3/8
Max Starting Current MSC(A):		Liquid Pipe Connection (inch):	1/4
Rated Load Amps RLA(A):	6.8	Sound Pressure (H) (dBA):	46
Dimensions (HxWxD) (in):	21-5/8 x 26-9/16 x 11-3/16	Sound Power Level (dBA):	
Net Weight (lb):	55		

DIMENSIONAL DRAWING - OUTDOOR UNIT



C: 3D092206



Submittal Data Sheet

1.0-Ton Wall Mounted Unit Cooling Only

FTK12NMVJURK12NMVJU

FEATURES

- IR controller included
- Titanium apatite photocatalytic air purification filter (option)
- Hot start technology
- Auto-restart (after power failure)

INDOOR UNIT



BENEFITS

- Quiet operation
- Low ambient cooling operation down to -4° F with field setting and wind baffle (KPW937E4)
- Operating Range - Cooling (50° - 114.8°)
- 12 year limited parts and compressor warranty with online registration
- 5 Year limited parts warranty for commercial applications

OUTDOOR UNIT





Submittal Data Sheet

1.0-Ton Wall Mounted Unit Cooling Only

FTK12NMVJURK12NMVJU

SYSTEM PERFORMANCE

Indoor Unit Model No.	FTK12NMVJU	Indoor Unit Name:	19 SEER AC DUCTLESS ID 1 TON
Outdoor Unit Model No.	RK12NMVJU	Outdoor Unit Name:	19 SEER AC DUCTLESS OD 1 TON
Rated Cooling Capacity (Btu/hr):	10,900	Rated Cooling Conditions:	Indoor (°F DB/WB): 80 / 67 Ambient (°F DB/WB): 95 / 75
Sensible Capacity (Btu/hr):	9,480	Rated Piping Length(ft):	25
Max/Min Cooling Capacity (Btu/hr):	13,300 / 4,400	Rated Height Difference (ft):	49.00
Cooling Input Power (kW):	0.870	Rated Heating Conditions:	Indoor (°F DB/WB): 70 / 70 Ambient (°F DB/WB): 47 / 43
SEER (Non-Ducted/Ducted):	19.00 /		
EER (Non-Ducted/Ducted):	12.50 /	Heating COP (Non-Ducted/Ducted):	3.8 /

SYSTEM DETAILS

Refrigerant Type:	R-410A	Cooling Operation Range (°F DB):	50 - 115
Holding Refrigerant Charge (lbs):	2.1	Heating Operation Range (°F WB):	-
Additional Charge (lb/ft):	0.01	Max. Pipe Length (Vertical) (ft):	49
Pre-charge Piping (Length) (ft):	32	Cooling Range w/Baffle (°F DB):	0 - 115
Max. Pipe Length (Total) (ft):	66	Heating Range w/Baffle (°F WB):	-
Max Height Separation (Ind to Ind ft):	49		



Submittal Data Sheet

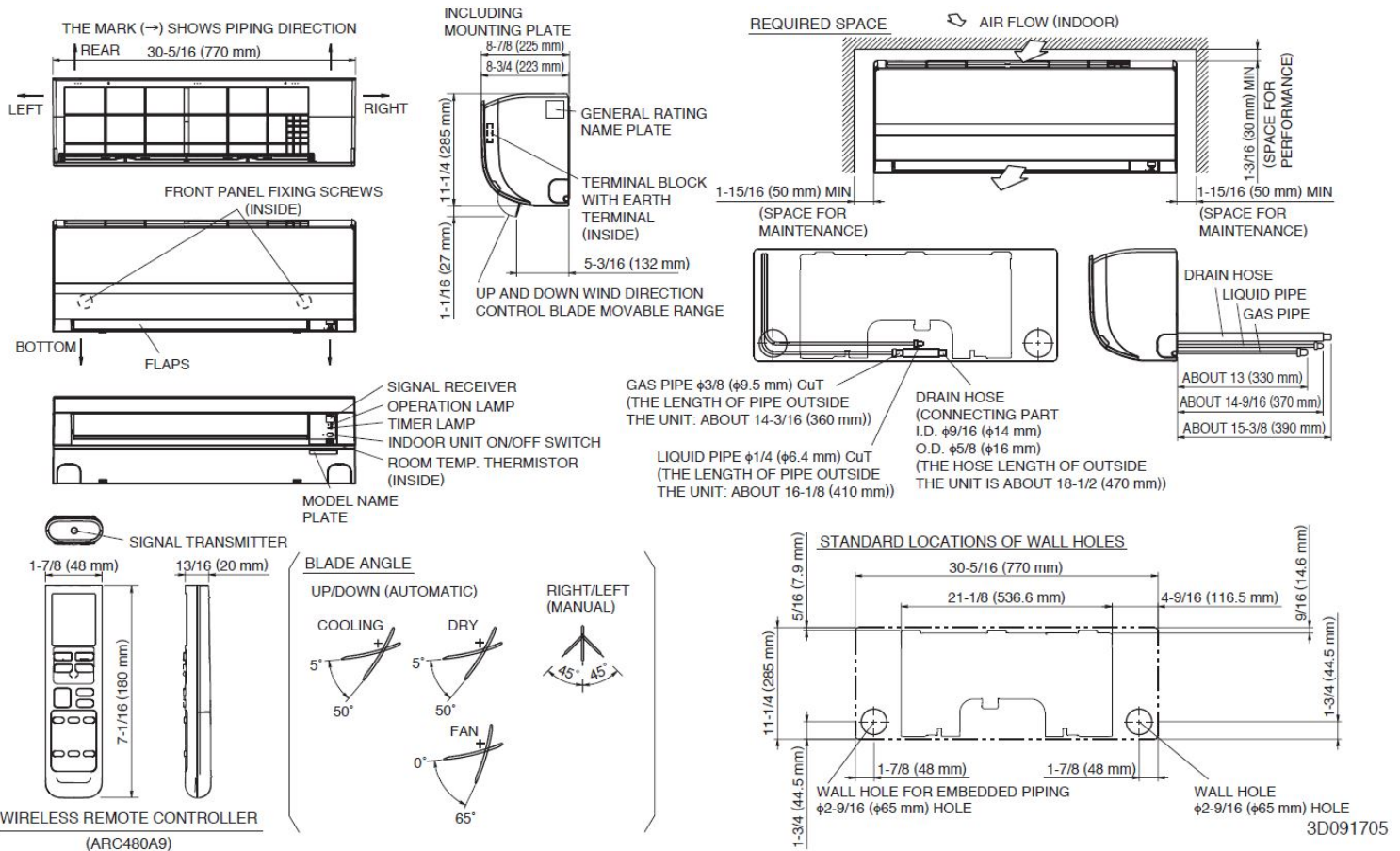
1.0-Ton Wall Mounted Unit Cooling Only

FTK12NMVJURK12NMVJU

INDOOR UNIT DETAILS

Power Supply (V/Hz/Ph):	208-230 / 60 / 1	Airflow Rate (H/M/L/SL) (CFM):	434/311/247/145
Power Supply Connections:	See Outdoor Unit for Electrical Specs	Moisture Removal (Gal/hr):	0.5
Min. Circuit Amps MCA (A):		Gas Pipe Connection (inch):	3/8
Max Overcurrent Protection (MOP) (A):		Liquid Pipe Connection (inch):	1/4
Dimensions (HxWxD) (in):	11-1/4 x 30-5/16 x 8-3/4	Condensate Connection (inch):	5/8
Panel (HxWxD) (in):		Sound Pressure (H/M/L/SL) (dBA):	45/37/30/19
Net Weight (lb):	18	Sound Power Level (dBA):	
Panel Weight (lb):		Ext. Static Pressure (Rated/Max) (inWg):	/

DIMENSIONAL DRAWING - INDOOR UNIT



Submittal Data Sheet

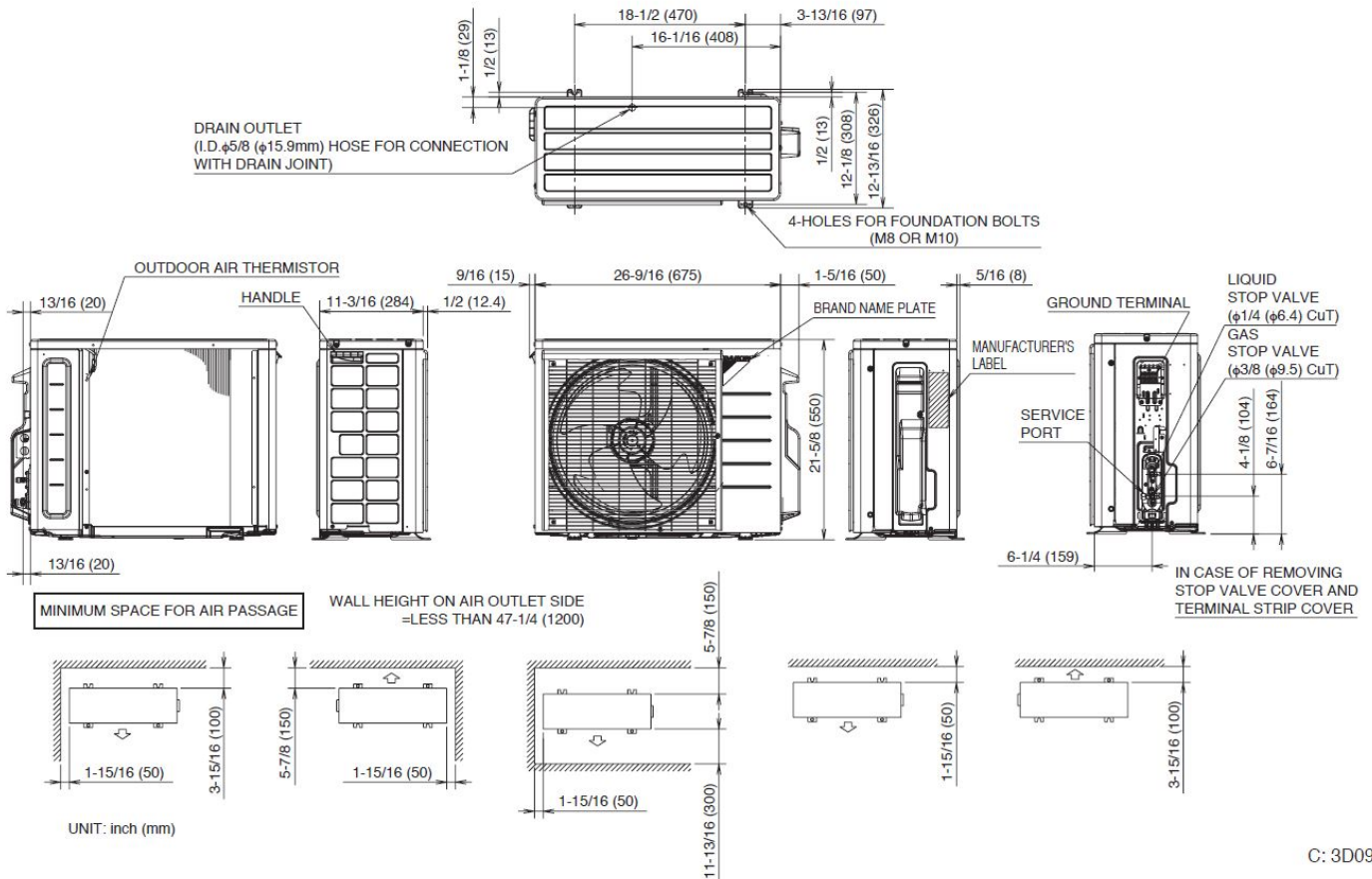
1.0-Ton Wall Mounted Unit Cooling Only

FTK12NMVJURK12NMVJU

OUTDOOR UNIT DETAILS

Power Supply (V/Hz/Ph):	208-230 / 60 / 1	Compressor Type:	Inverter
Power Supply Connections:	L1, L2, Ground	Capacity Control Range (%):	-
Min. Circuit Amps MCA (A):	12.20	Airflow Rate (H) (CFM):	1,105
Max Overcurrent Protection (MOP) (A):	15.00	Gas Pipe Connection (inch):	3/8
Max Starting Current MSC(A):		Liquid Pipe Connection (inch):	1/4
Rated Load Amps RLA(A):	7.5	Sound Pressure (H) (dBA):	49
Dimensions (HxWxD) (in):	21-5/8 x 26-9/16 x 11-3/16	Sound Power Level (dBA):	
Net Weight (lb):	60		

DIMENSIONAL DRAWING - OUTDOOR UNIT



C: 3D092206



Submittal Data Sheet

1.5-Ton Wall Mounted Unit Cooling Only

FTK18NMVJURK18NMVJU

FEATURES

- IR controller included
- Titanium apatite photocatalytic air purification filter (option)
- Hot start technology
- Auto-restart (after power failure)

INDOOR UNIT



BENEFITS

- Quiet operation
- Low ambient cooling operation down to -4° F with field setting and wind baffle (KPW063A4)
- Operating Range - Cooling (50° - 114.8°)
- 12 year limited parts and compressor warranty with online registration
- 5 Year limited parts warranty for commercial applications

OUTDOOR UNIT





Submittal Data Sheet

1.5-Ton Wall Mounted Unit Cooling Only

FTK18NMVJURK18NMVJU

SYSTEM PERFORMANCE

Indoor Unit Model No.	FTK18NMVJU	Indoor Unit Name:	18 SEER AC DUCTLESS ID 1.5 TON
Outdoor Unit Model No.	RK18NMVJU	Outdoor Unit Name:	18 SEER AC DUCTLESS OD 1.5 TON
Rated Cooling Capacity (Btu/hr):	18,000	Rated Cooling Conditions:	Indoor (°F DB/WB): 80 / 67 Ambient (°F DB/WB): 95 / 75
Sensible Capacity (Btu/hr):	14,480	Rated Piping Length(ft):	25
Max/Min Cooling Capacity (Btu/hr):	20,000 / 5,500	Rated Height Difference (ft):	65.60
Cooling Input Power (kW):	1.440	Rated Heating Conditions:	Indoor (°F DB/WB): 70 / 70 Ambient (°F DB/WB): 47 / 43
SEER (Non-Ducted/Ducted):	18.00 /		
EER (Non-Ducted/Ducted):	12.50 /	Heating COP (Non-Ducted/Ducted):	3.7 /

SYSTEM DETAILS

Refrigerant Type:	R-410A	Cooling Operation Range (°F DB):	50 - 115
Holding Refrigerant Charge (lbs):	2.5	Heating Operation Range (°F WB):	-
Additional Charge (lb/ft):	0.01	Max. Pipe Length (Vertical) (ft):	66
Pre-charge Piping (Length) (ft):	32	Cooling Range w/Baffle (°F DB):	0 - 115
Max. Pipe Length (Total) (ft):	98	Heating Range w/Baffle (°F WB):	-
Max Height Separation (Ind to Ind ft):	66		

Submittal Data Sheet

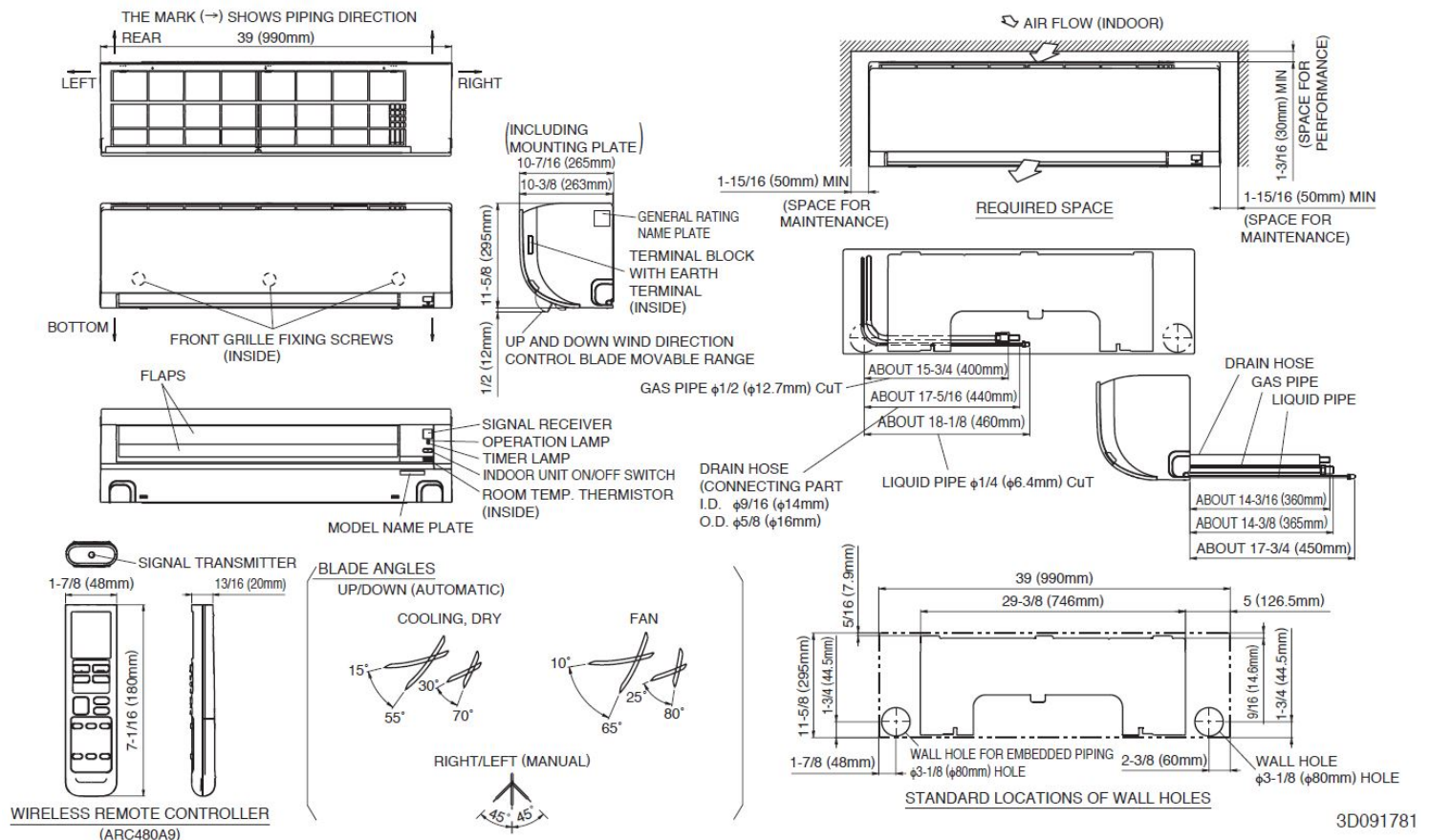
1.5-Ton Wall Mounted Unit Cooling Only

FTK18NMVJURK18NMVJU

INDOOR UNIT DETAILS

Power Supply (V/Hz/Ph):	208-230 / 60 / 1	Airflow Rate (H/M/L/SL) (CFM):	713/579/448/403
Power Supply Connections:	See Outdoor Unit for Electrical Specs	Moisture Removal (Gal/hr):	1.0
Min. Circuit Amps MCA (A):		Gas Pipe Connection (inch):	1/2
Max Overcurrent Protection (MOP) (A):		Liquid Pipe Connection (inch):	1/4
Dimensions (HxWxD) (in):	11-5/8 x 39 x 10-3/8	Condensate Connection (inch):	5/8
Panel (HxWxD) (in):		Sound Pressure (H/M/L/SL) (dBA):	49/44/38/33
Net Weight (lb):	27	Sound Power Level (dBA):	
Panel Weight (lb):		Ext. Static Pressure (Rated/Max) (inWg):	/

DIMENSIONAL DRAWING - INDOOR UNIT



Daikin North America LLC, 5151 San Felipe, Suite 500, Houston, TX, 77056

Daikin City Generated Submittal Data

www.daikinac.com www.daikincomfort.com

(Daikin's products are subject to continuous improvements. Daikin reserves the right to modify product design, specifications and information in this data sheet without notice and without incurring any obligations)

Submittal Date: 1/13/2017 6:37:22 AM

Page 3 of 4



Submittal Data Sheet

2.0-Ton Wall Mounted Unit Cooling Only

FTK24NMVJURK24NMVJU

FEATURES

- IR controller included
- Titanium apatite photocatalytic air purification filter (option)
- Hot start technology
- Auto-restart (after power failure)

INDOOR UNIT



BENEFITS

- Quiet operation
- Low ambient cooling operation down to -4° F with field setting and wind baffle (KPW063A4)
- Operating Range - Cooling (50° - 114.8°)
- 12 year limited parts and compressor warranty with online registration
- 5 Year limited parts warranty for commercial applications

OUTDOOR UNIT





Submittal Data Sheet

2.0-Ton Wall Mounted Unit Cooling Only

FTK24NMVJURK24NMVJU

SYSTEM PERFORMANCE

Indoor Unit Model No.	FTK24NMVJU	Indoor Unit Name:	18 SEER AC DUCTLESS ID 2 TON
Outdoor Unit Model No.	RK24NMVJU	Outdoor Unit Name:	18 SEER AC DUCTLESS OD 2 TON
Rated Cooling Capacity (Btu/hr):	21,200	Rated Cooling Conditions:	Indoor (°F DB/WB): 80 / 67 Ambient (°F DB/WB): 95 / 75
Sensible Capacity (Btu/hr):	15,760	Rated Piping Length(ft):	25
Max/Min Cooling Capacity (Btu/hr):	24,000 / 5,500	Rated Height Difference (ft):	65.60
Cooling Input Power (kW):	1.700	Rated Heating Conditions:	Indoor (°F DB/WB): 70 / 70 Ambient (°F DB/WB): 47 / 43
SEER (Non-Ducted/Ducted):	18.00 /		
EER (Non-Ducted/Ducted):	12.50 /	Heating COP (Non-Ducted/Ducted):	3.7 /

SYSTEM DETAILS

Refrigerant Type:	R-410A	Cooling Operation Range (°F DB):	50 - 115
Holding Refrigerant Charge (lbs):	2.5	Heating Operation Range (°F WB):	-
Additional Charge (lb/ft):	0.01	Max. Pipe Length (Vertical) (ft):	66
Pre-charge Piping (Length) (ft):	32	Cooling Range w/Baffle (°F DB):	0 - 115
Max. Pipe Length (Total) (ft):	98	Heating Range w/Baffle (°F WB):	-
Max Height Separation (Ind to Ind ft):	66		

Submittal Data Sheet

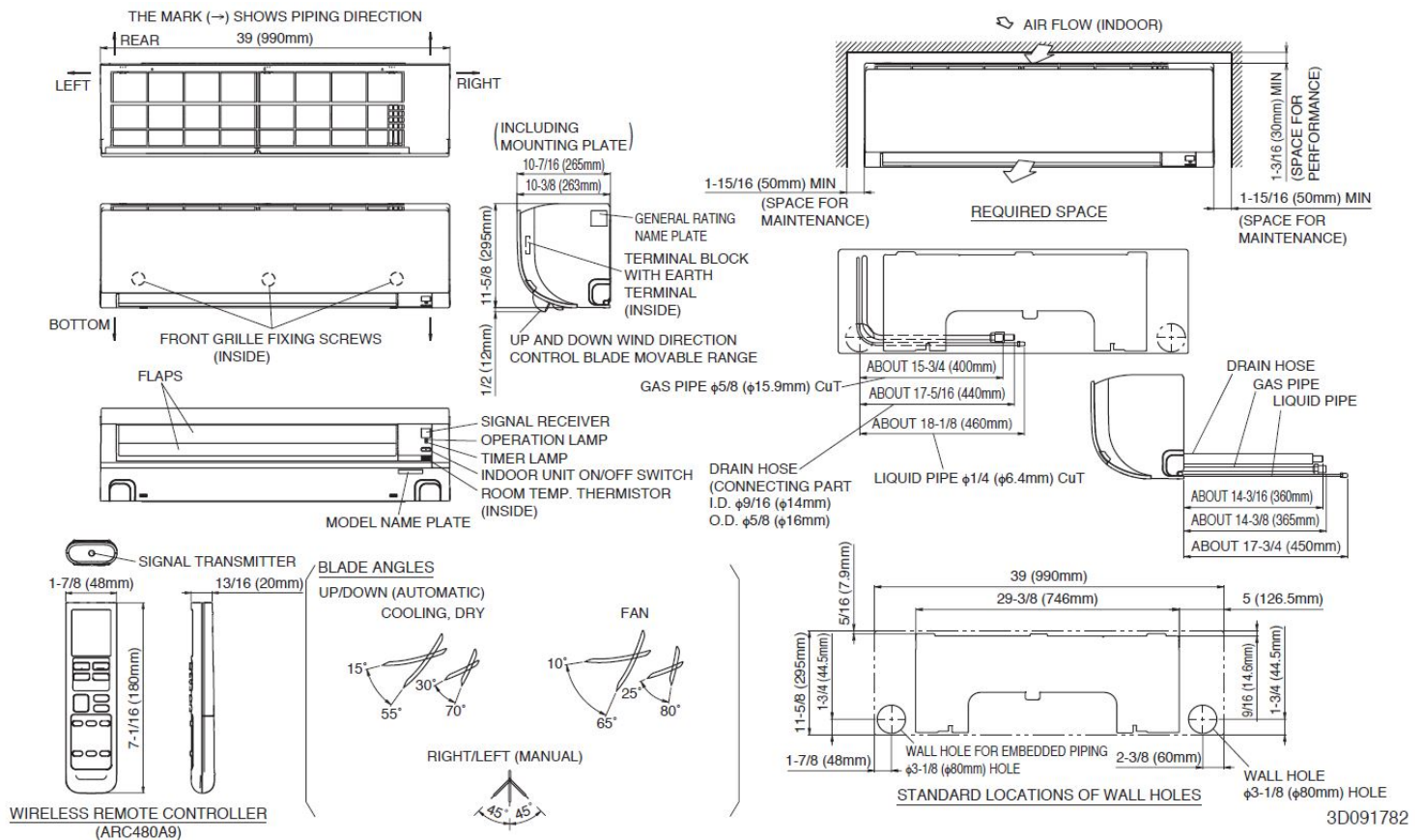
2.0-Ton Wall Mounted Unit Cooling Only

FTK24NMVJURK24NMVJU

INDOOR UNIT DETAILS

Power Supply (V/Hz/Ph):	208-230 / 60 / 1	Airflow Rate (H/M/L/SL) (CFM):	713/579/512/403
Power Supply Connections:	See Outdoor Unit for Electrical Specs	Moisture Removal (Gal/hr):	1.2
Min. Circuit Amps MCA (A):		Gas Pipe Connection (inch):	5/8
Max Overcurrent Protection (MOP) (A):		Liquid Pipe Connection (inch):	1/4
Dimensions (HxWxD) (in):	11-5/8 x 39 x 10-3/8	Condensate Connection (inch):	5/8
Panel (HxWxD) (in):		Sound Pressure (H/M/L/SL) (dBA):	53/45/39/34
Net Weight (lb):	27	Sound Power Level (dBA):	
Panel Weight (lb):		Ext. Static Pressure (Rated/Max) (inWg):	/

DIMENSIONAL DRAWING - INDOOR UNIT





Submittal Data Sheet

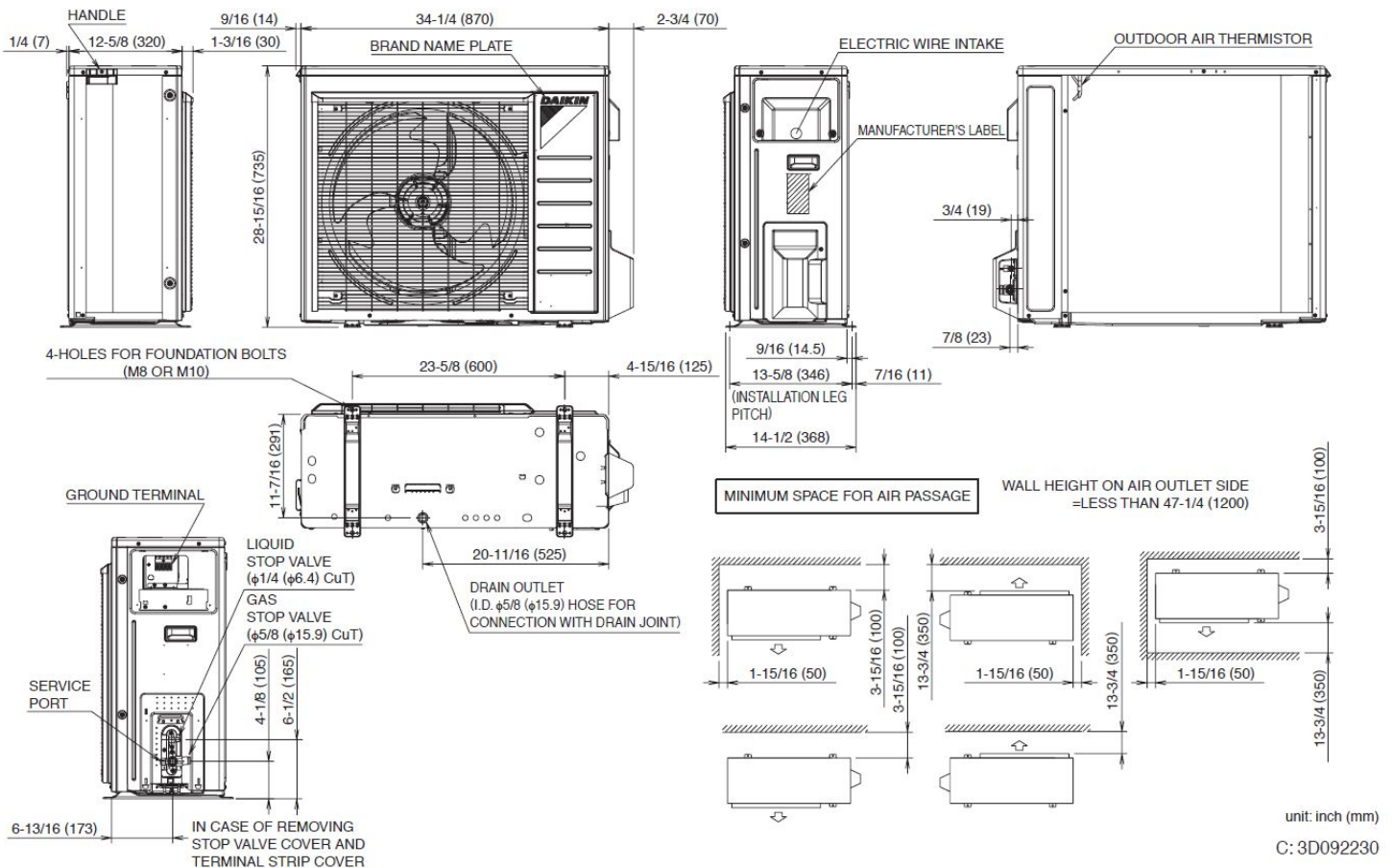
2.0-Ton Wall Mounted Unit Cooling Only

FTK24NMVJURK24NMVJU

OUTDOOR UNIT DETAILS

Power Supply (V/Hz/Ph):	208-230 / 60 / 1	Compressor Type:	Inverter
Power Supply Connections:	L1, L2, Ground	Capacity Control Range (%):	-
Min. Circuit Amps MCA (A):	18.30	Airflow Rate (H) (CFM):	2,101
Max Overcurrent Protection (MOP) (A):	20.00	Gas Pipe Connection (inch):	5/8
Max Starting Current MSC(A):		Liquid Pipe Connection (inch):	1/4
Rated Load Amps RLA(A):	12.0	Sound Pressure (H) (dBA):	55
Dimensions (HxWxD) (in):	28-15/16 x 34-1/4 x 12-5/8	Sound Power Level (dBA):	
Net Weight (lb):	108		

DIMENSIONAL DRAWING - OUTDOOR UNIT



Daikin North America LLC, 5151 San Felipe, Suite 500, Houston, TX, 77056

Daikin City Generated Submittal Data

www.daikinac.com www.daikincomfort.com

(Daikin's products are subject to continuous improvements. Daikin reserves the right to modify product design, specifications and information in this data sheet without notice and without incurring any obligations)

Submittal Date: 1/13/2017 6:37:35 AM

Page 4 of 4