

SERVICE PARTS LIST FOR MITSUBISHI ELECTRIC PACKAGED AIR-CONDITIONERS

Series : MVZ-A•AA4

For use with the R410A

REVISED

Feb. 2015

BWE01432A

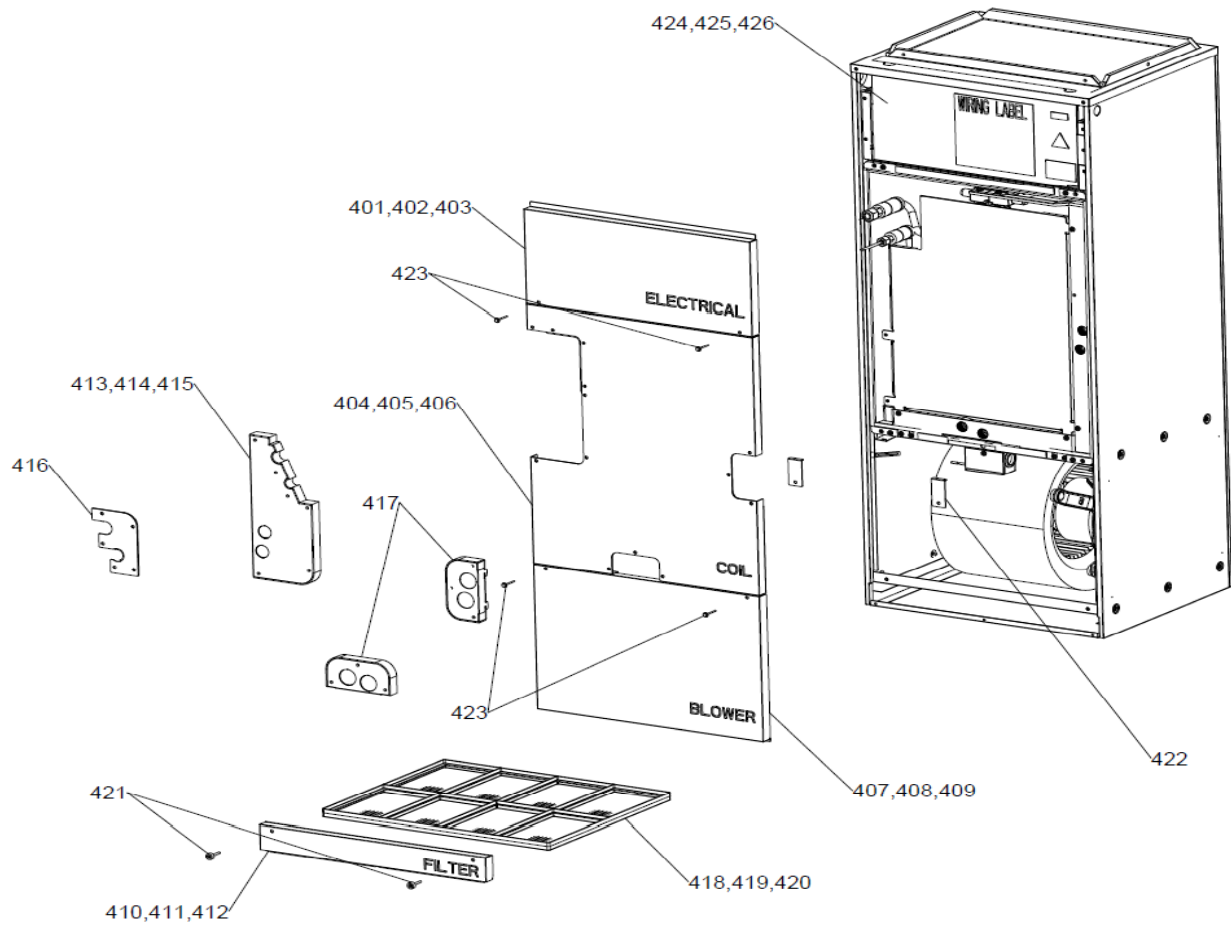
| INDEX |
|------------|
| MVZ-A12AA4 |
| MVZ-A18AA4 |
| MVZ-A24AA4 |
| MVZ-A30AA4 |
| MVZ-A36AA4 |

Part information update day : 2015/02/16

Please change the old catalog (issued Dec. 2014, No.BWE014320) to this new catalog.

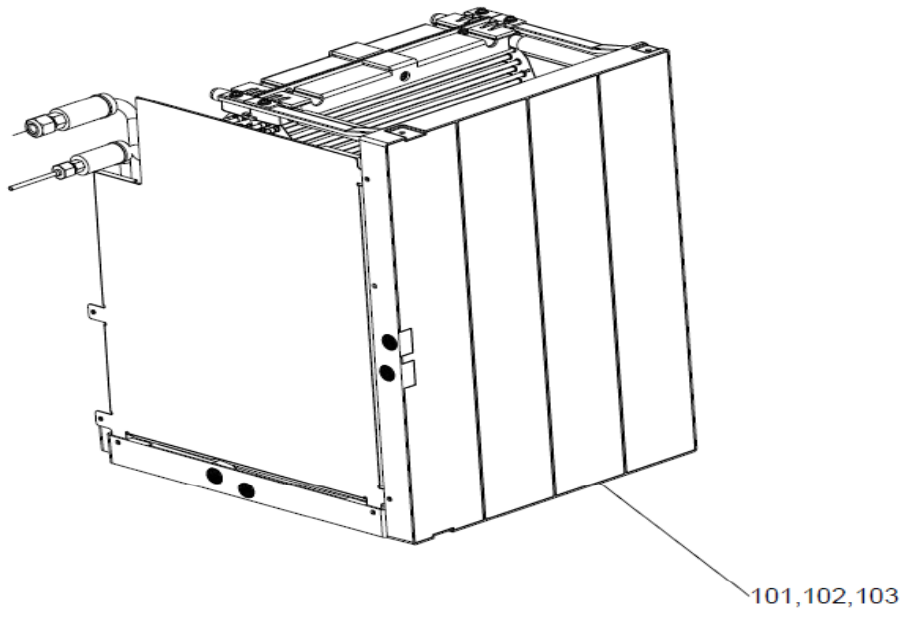
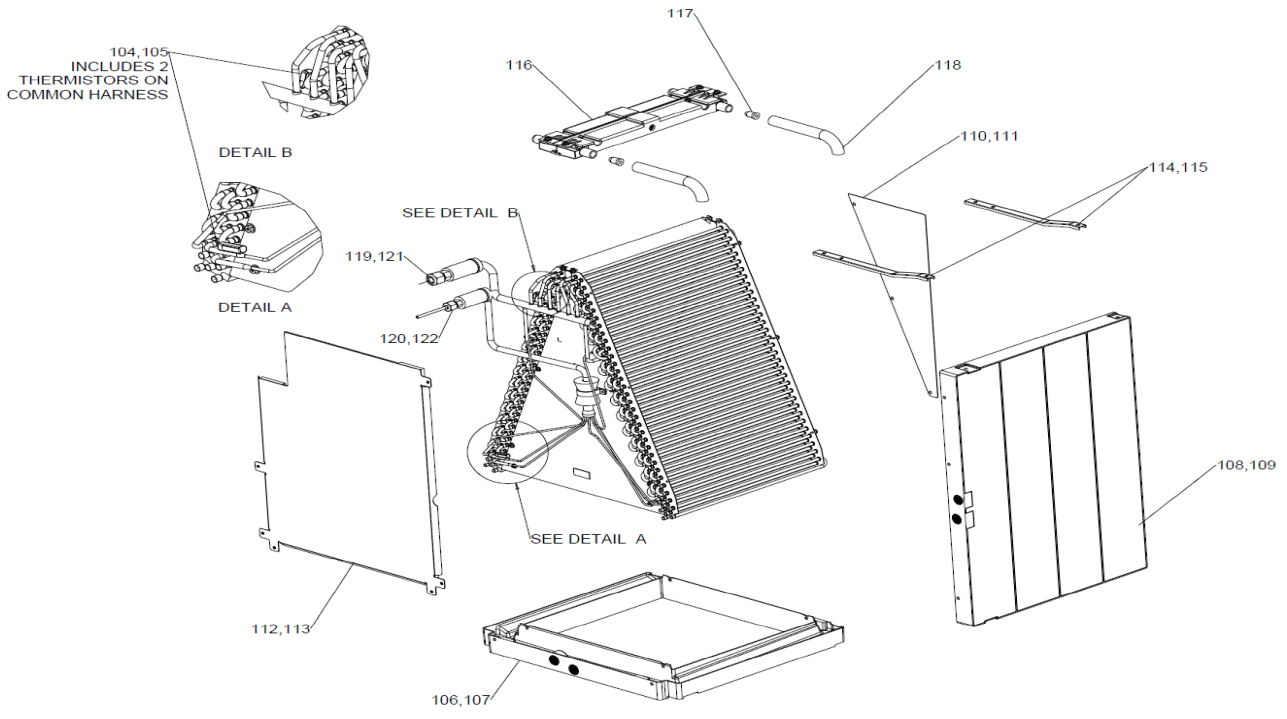
Content of revision : Some of parts are changed.





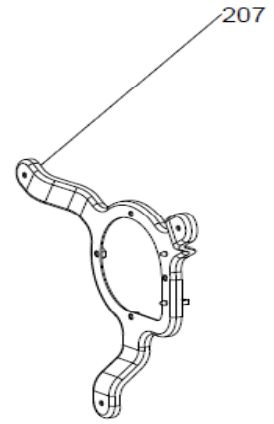
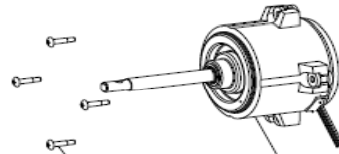
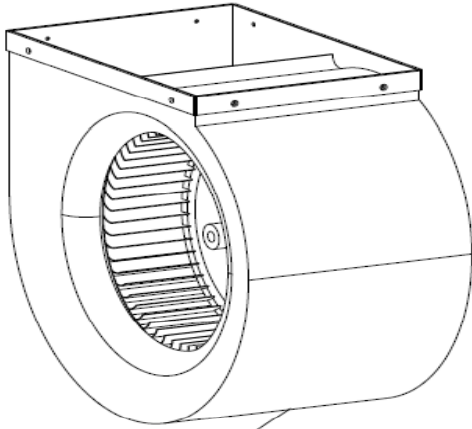
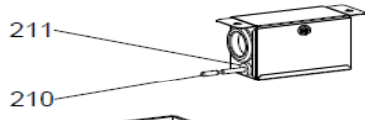
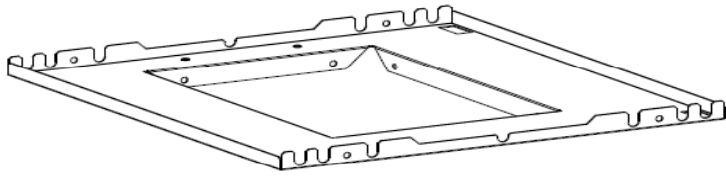
External Parts

| No. | Part No. | Part Name | Spec. | MVZ-A12 | MVZ-A18 | MVZ-A24 | MVZ-A30 | MVZ-A36 | Dwg. No. | Notes for models | Revision info |
|-----|-------------|--------------------------|-------|---------|---------|---------|---------|---------|-------------|------------------|---------------|
| | | | | | | | | | | | |
| 401 | U41 001 638 | FRONT PANEL ELECTRICAL S | | 1 | 1 | 1 | | | PA00C246G01 | | |
| 402 | U41 002 638 | FRONT PANEL ELECTRICAL M | | | | | 1 | 1 | PA00C246G02 | | |
| 403 | | FRONT PANEL ELECTRICAL L | | | | | | | PA00C246G03 | | |
| 404 | U41 001 639 | FRONT PANEL HEX S | | 1 | 1 | 1 | | | PA00B097G01 | | |
| 405 | U41 002 639 | FRONT PANEL HEX M | | | | | 1 | 1 | PA00B097G02 | | |
| 406 | | FRONT PANEL HEX L | | | | | | | PA00B097G03 | | |
| 407 | U41 001 637 | FRONT PANEL BLOWER S | | 1 | 1 | 1 | | | PA00C247G01 | | |
| 408 | U41 002 637 | FRONT PANEL BLOWER M | | | | | 1 | 1 | PA00C247G02 | | |
| 409 | | FRONT PANEL BLOWER L | | | | | | | PA00C247G03 | | |
| 410 | U41 001 636 | FRONT PANEL FILTER S | | 1 | 1 | 1 | | | PA00C251G01 | | |
| 411 | U41 002 636 | FRONT PANEL FILTER M | | | | | 1 | 1 | PA00C251G02 | | |
| 412 | | FRONT PANEL FILTER L | | | | | | | PA00C251G03 | | |
| 413 | U41 001 635 | PIPE/DRAIN PANEL S | | 1 | 1 | 1 | | | PA00C236G01 | | |
| 414 | U41 002 635 | PIPE/DRAIN PANEL M | | | | | 1 | 1 | PA00C236G02 | | |
| 415 | | PIPE/DRAIN PANEL L | | | | | | | PA00C236G03 | | |
| 416 | U41 004 635 | PIPE PANEL | | 1 | 1 | 1 | 1 | 1 | PA00D164G01 | | |
| 417 | U41 005 635 | DRAIN PANEL | | 2 | 2 | 2 | 2 | 2 | PA00D162G01 | | |
| 418 | U41 004 500 | FILTER-PLASTIC S | | 1 | 1 | 1 | | | PA35B051G01 | 16X20 | |
| 419 | U41 005 500 | FILTER-PLASTIC M | | | | | 1 | 1 | PA35B052G01 | 20X20 | |
| 420 | | FILTER-PLASTIC L | | | | | | | PA35B053G01 | 24X20 | |
| 421 | U41 001 087 | PLASTIC THUMBSCREW | | 2 | 2 | 2 | 2 | 2 | PA12D179H01 | M5X35 | |
| 422 | U41 001 086 | COIL BRACKET | | 1 | 1 | 1 | 2 | 2 | PA00D163G01 | | |
| 423 | U41 002 087 | SCREW M5X40 | | 4 | 4 | 4 | 4 | 4 | PA12D177H01 | | |
| 424 | U41 001 812 | COVER CONTROL BOX S | | 1 | 1 | 1 | | | PA02C150H01 | | |
| 425 | U41 002 812 | COVER CONTROL BOX M | | | | | 1 | 1 | PA02C141H01 | | |
| 426 | | COVER CONTROL BOX L | | | | | | | PA02C132H01 | | |



Hex Assembly Parts

| No. | Part No. | Part Name | Spec. | MVZ-A12 | MVZ-A18 | MVZ-A24 | MVZ-A30 | MVZ-A36 | Dwg. No. | Notes for models | Revision info |
|-----|-------------|------------------------|-------|---------|---------|---------|---------|---------|-------------|------------------------|---------------|
| | | | | | | | | | | | |
| 101 | U41 018 480 | HEAT EXCHANGER A12 | | 1 | 1 | | | | PA00B026B01 | Includes all hex parts | |
| 102 | U41 019 480 | HEAT EXCHANGER A24 | | | | 1 | | | PA00B026B02 | Includes all hex parts | |
| 103 | U41 016 480 | HEAT EXCHANGER A30 | | | | | 1 | 1 | PA00B101B01 | Includes all hex parts | |
| 104 | U41 003 200 | THERMISTOR | | 1 | 1 | 1 | | | KB71B945H05 | | |
| 105 | U41 004 200 | THERMISTOR | | | | | 1 | 1 | KB71B945H06 | | |
| 106 | U41 006 529 | DRAIN PAN ASSY LOWER S | | 1 | 1 | 1 | | | PA00B098G01 | | |
| 107 | U41 007 529 | DRAIN PAN ASSY LOWER M | | | | | 1 | 1 | PA00B098G02 | | |
| 108 | U41 009 529 | DRAIN PAN ASSY SIDE S | | 1 | 1 | 1 | | | PA00C248G01 | | |
| 109 | U41 010 529 | DRAIN PAN ASSY SIDE M | | | | | 1 | 1 | PA00C248G02 | | |
| 110 | U41 001 668 | PLATE GUIDE REAR S | | 1 | 1 | 1 | | | PA00D171G01 | | |
| 111 | U41 002 668 | PLATE GUIDE REAR M | | | | | 1 | 1 | PA00D171G02 | | |
| 112 | U41 004 668 | PLATE GUIDE FRONT S | | 1 | 1 | 1 | | | PA00C242G01 | | |
| 113 | U41 005 668 | PLATE GUIDE FRONT M | | | | | 1 | 1 | PA00C242G02 | | |
| 114 | U41 001 662 | SIDE PAN BRACKET S | | 2 | 2 | 2 | | | PA02C077H01 | | |
| 115 | U41 002 662 | SIDE PAN BRACKET M | | | | | 2 | 2 | PA02C078H01 | | |
| 116 | U41 012 529 | DRAIN PAN ASSY TOP | | 2 | 2 | 2 | 2 | 2 | PA00C279G01 | | |
| 117 | U41 002 558 | PLUG-TOP DRAIN PAN | | 4 | 4 | 4 | 4 | 4 | C126C778H17 | | |
| 118 | U41 001 525 | HOSE-TOP DRAIN PAN | | 2 | 2 | 2 | 2 | 2 | PA27D214H02 | | |
| 119 | U41 003 122 | NUT FLARE 1/2F | | 1 | 1 | | | | BG12S008H02 | | |
| 120 | U41 001 122 | NUT FLARE 5/8 | | | | 1 | 1 | 1 | BG12S826H03 | | |
| 121 | U41 004 122 | NUT FLARE 1/4 | | 1 | 1 | | | | Z211A143H01 | | |
| 122 | U41 002 122 | NUT FLARE 3/8 | | | | 1 | 1 | 1 | Z211A143H06 | | |



213

204,205

201,202

| No. | Part No. | Part Name | Spec. | MVZ-A12 | MVZ-A18 | MVZ-A24 | MVZ-A30 | MVZ-A36 | Dwg. No. | Notes for models | Revision info |
|-----|-------------|-----------------------|-------|---------|---------|---------|---------|---------|-------------|------------------|---------------|
| | | | | | | | | | | | |
| 201 | U41 005 129 | FAN CASE S | | 1 | 1 | 1 | | | PA00C249G01 | | |
| 202 | U41 006 129 | FAN CASE M | | | | | 1 | 1 | PA00C249G02 | | |
| 203 | | FAN CASE L | | | | | | | PA00C249G03 | | |
| 204 | U41 003 128 | BLOWER MOTOR S | | 1 | 1 | 1 | | | PA61B071H02 | | |
| 205 | U41 004 128 | BLOWER MOTOR M | | | | | 1 | 1 | PA61B072H02 | | |
| 206 | | BLOWER MOTOR L | | | | | | | PA61B073H03 | | |
| 207 | U41 001 130 | MOTOR BRACKET S M | | 1 | 1 | 1 | 1 | 1 | PA00D167G02 | | |
| 208 | | MOTOR BRACKET L | | | | | | | PA00D168G01 | | |
| 209 | | RUBBER GROMMET | | | | | | | PA32D195H01 | | |
| 210 | U41 001 287 | THERMISTOR RETURN AIR | | 1 | 1 | 1 | 1 | 1 | PA71C160H01 | | |
| 211 | U41 002 104 | BUSHING SRB-R-2 | | 1 | 1 | 1 | 1 | 1 | KB32K138H01 | | |
| 213 | U41 005 087 | BOLT MOTOR (S, M) | | 4 | 4 | 4 | 4 | 4 | PA12D178H01 | | |
| 214 | | BOLT MOTOR (L) | | | | | | | PA12D194H01 | | |



Control Box Parts

| No. | Part No. | Part Name | Spec. | MVZ-A12 | MVZ-A18 | MVZ-A24 | MVZ-A30 | MVZ-A36 | Dwg. No. | Notes for models | Revision info |
|-----|-------------|---------------------|-------|---------|---------|---------|---------|---------|-------------|------------------|---------------|
| | | | | | | | | | | | |
| 301 | U41 008 280 | PCA ASSY PVA/MVZ | | 1 | 1 | 1 | 1 | 1 | PA95D226G02 | INCLUDES NO.306 | Chg. |
| 302 | U41 005 280 | PCA BOARD POWER | | 1 | 1 | 1 | | | KE95B740F04 | | Chg. |
| 303 | U41 006 280 | PCA BOARD POWER | | | | | 1 | 1 | KE95B740F05 | | Chg. |
| 304 | U41 004 246 | TERMINAL BLOCK ASSY | | 1 | 1 | 1 | 1 | 1 | BH00C267G02 | | |
| 305 | U41 003 246 | TERMINAL BLOCK | | 1 | 1 | 1 | 1 | 1 | BG00R200G62 | | |
| 306 | U41 001 G08 | JUMPER CONNECTOR | | 1 | 1 | 1 | 1 | 1 | BB00M192G08 | CN4F | |

mitsubishi electric corporation

BWE01432A (20150228)