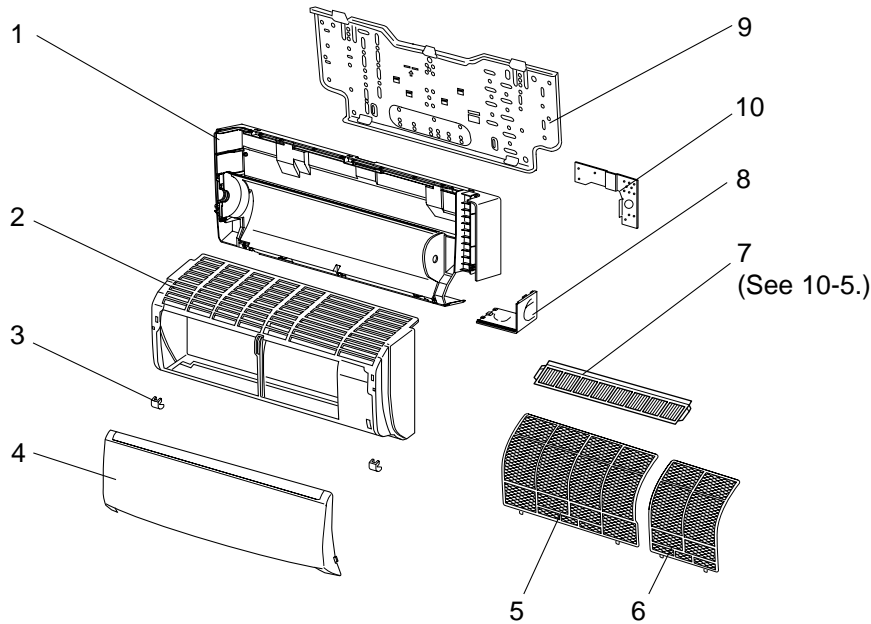


10-1. PARTS LIST (non-RoHS compliant)

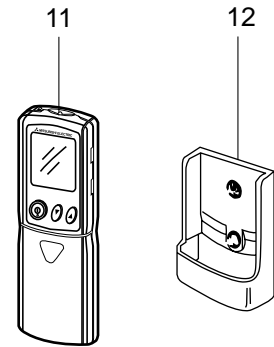
MS-A09WA

MS-A12WA

1. INDOOR UNIT STRUCTURAL PARTS



2. ACCESSORY AND REMOTE CONTROLLER



1. INDOOR UNIT STRUCTURAL PARTS

| No. | Part No. | Part name | Symbol in Wiring Diagram | Q'ty/unit | | Remarks |
|-----|-------------|-----------------------------|--------------------------|-----------|----------|------------------|
| | | | | MS-A09WA | MS-A12WA | |
| 1 | E02 A32 234 | BOX | | 1 | 1 | |
| 2 | E02 A49 000 | PANEL ASSEMBLY | | 1 | 1 | Including No.3,4 |
| 3 | E02 913 067 | SCREW CAP | | 2 | 2 | 2PCS/SET |
| 4 | E02 915 010 | FRONT PANEL | | 1 | 1 | |
| 5 | E02 915 100 | CATECHIN AIR FILTER (LEFT) | | 1 | 1 | |
| 6 | E02 916 100 | CATECHIN AIR FILTER (RIGHT) | | 1 | 1 | |
| 7 | — | AIR CLEANING FILTER | | 1 | 1 | MAC-415FT-E |
| 8 | E02 A32 975 | CORNER BOX (RIGHT) | | 1 | 1 | |
| 9 | E02 913 970 | INSTALLATION PLATE | | 1 | 1 | |
| 10 | E02 A49 978 | CONDUIT PLATE | | 1 | 1 | |

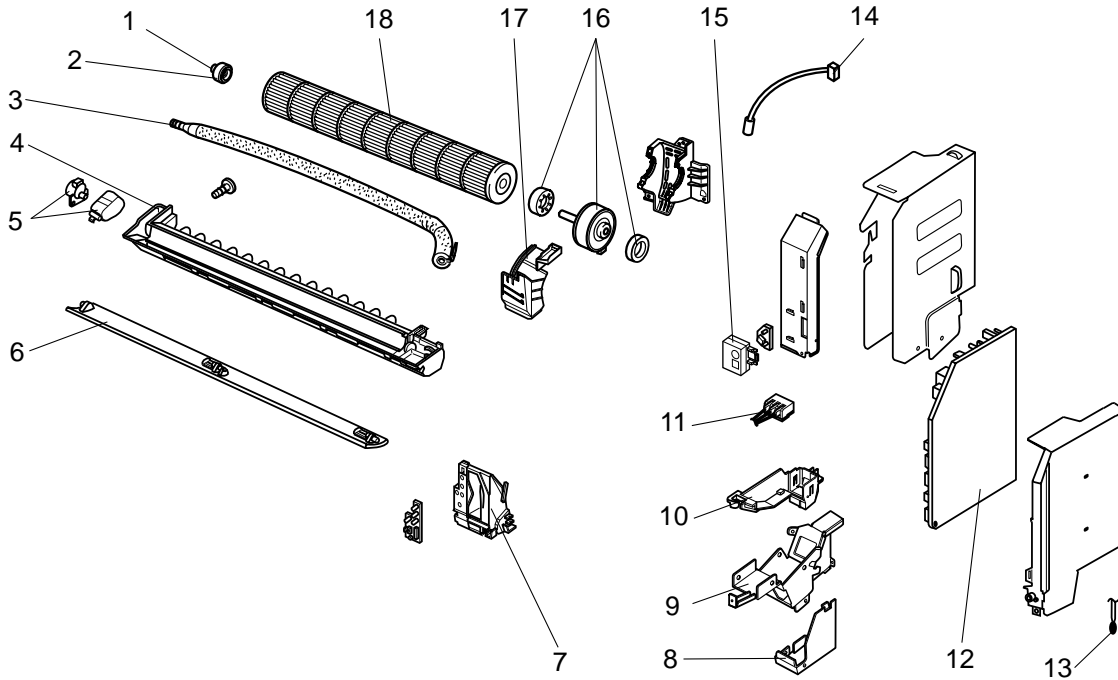
2. ACCESSORY AND REMOTE CONTROLLER

| | | | | | | |
|----|-------------|--------------------------|--|---|---|-------|
| 11 | E02 A49 426 | REMOTE CONTROLLER | | 1 | 1 | KM06C |
| 12 | E02 527 083 | REMOTE CONTROLLER HOLDER | | 1 | 1 | |

MS-A09WA

MS-A12WA

3. INDOOR UNIT ELECTRICAL PARTS AND FUNCTIONAL PARTS



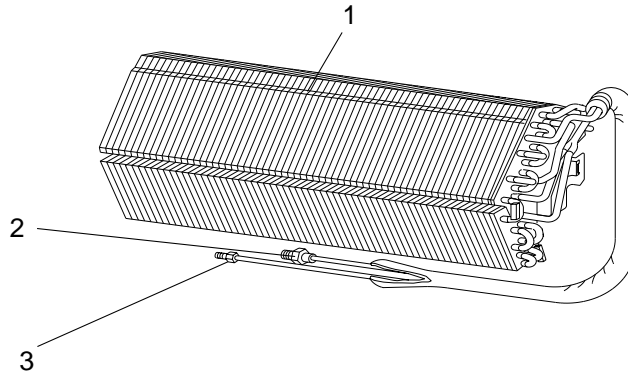
| No. | Part No. | Part name | Symbol in Wiring Diagram | Q'ty/unit | | Remarks |
|-----|-------------|--|--------------------------|-----------|----------|--------------|
| | | | | MS-A09WA | MS-A12WA | |
| 1 | E02 751 509 | BEARING MOUNT | | 1 | 1 | |
| 2 | E02 001 504 | SLEEVE BEARING | | 1 | 1 | |
| 3 | E02 897 702 | DRAIN HOSE | | 1 | 1 | |
| 4 | E02 A49 235 | NOZZLE ASSEMBLY | | 1 | 1 | |
| 5 | E02 897 303 | VANE MOTOR UNIT (HORIZONTAL) | MV | 1 | 1 | UP & DOWN |
| 6 | E02 913 040 | HORIZONTAL VANE | | 1 | 1 | |
| 7 | E02 913 095 | POWER MONITOR RECEIVER P.C. BOARD HOLDER | | 1 | 1 | |
| 8 | E02 A49 979 | CONDUIT COVER | | 1 | 1 | |
| 9 | E02 A49 780 | TERMINAL BLOCK COVER | | 1 | 1 | |
| 10 | E02 A49 779 | TERMINAL BLOCK HOLDER | | 1 | 1 | |
| 11 | E02 A49 375 | TERMINAL BLOCK | TB | 1 | 1 | |
| 12 | E02 A49 452 | ELECTRONIC CONTROL P.C. BOARD *1 | | 1 | | AUTO RESTART |
| | E02 A50 452 | ELECTRONIC CONTROL P.C. BOARD *1 | | | 1 | AUTO RESTART |
| 13 | E02 897 308 | ROOM TEMPERATURE THERMISTOR | RT11 | 1 | 1 | |
| 14 | E02 897 307 | INDOOR COIL THERMISTOR | RT12 | 1 | 1 | |
| 15 | E02 915 782 | SWITCH HOLDER | | 1 | 1 | |
| 16 | E02 A49 300 | INDOOR FAN MOTOR *2 | MF | 1 | 1 | RC0H30-□ □ |
| 17 | E02 897 333 | MOTOR BAND | | 1 | 1 | |
| 18 | E02 897 302 | LINE FLOW FAN | | 1 | 1 | |

*1 Including SW P.C. BOARD and POWER MONITOR RECEIVER P.C. BOARD

*2 Including FAN MOTOR RUBBER MOUNT (2 PCS/SET)

MS-A09WA
MS-A12WA

4. INDOOR UNIT HEAT EXCHANGER



| No. | Part No. | Part name | Symbol in Wiring Diagram | Q'ty/unit | | Remarks |
|-----|-------------|-----------------------|--------------------------|-----------|----------|---------|
| | | | | MS-A09WA | MS-A12WA | |
| 1 | E02 A49 620 | INDOOR HEAT EXCHANGER | | 1 | | |
| | E02 A50 620 | INDOOR HEAT EXCHANGER | | | 1 | |
| 2 | E02 151 666 | UNION (GAS) | | 1 | | φ3/8 |
| | E02 155 666 | UNION (GAS) | | | 1 | φ1/2 |
| 3 | E02 151 667 | UNION (LIQUID) | | 1 | 1 | φ1/4 |

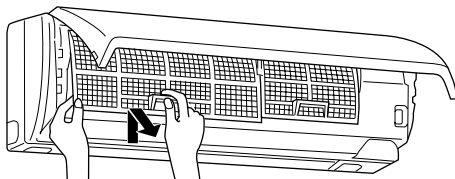
5. AIR CLEANING FILTER (ANTI-ALLERGY ENZYME FILTER)

- AIR CLEANING FILTER removes fine dust of 0.01 micron from air by means of static electricity.
- Normal life of AIR CLEANING FILTER is 1 year.
If AIR CLEANING FILTER is to be washed, soak AIR CLEANING FILTER in water (when showing dirt, in lukewarm water) and rinse it delicately, without removing the filter from the frame about once every 3 months.
- Clogged AIR CLEANING FILTER may reduce the air conditioner capacity or cause frost on the air outlet.
- Do not remove or attach AIR CLEANING FILTER during unit operation.

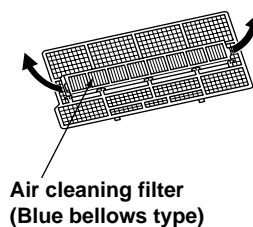
| Model | Part No. |
|----------------------|-------------|
| MS-A09WA MS-A12WA | MAC-415FT-E |

Replacement of the air cleaning filter

- (1) Remove the catechin air filter(left one).
The air cleaning filter is not attached to the right side catechin air filter.



- (2) Remove the air cleaning filter(Blue bellows type) from the catechin air filter.

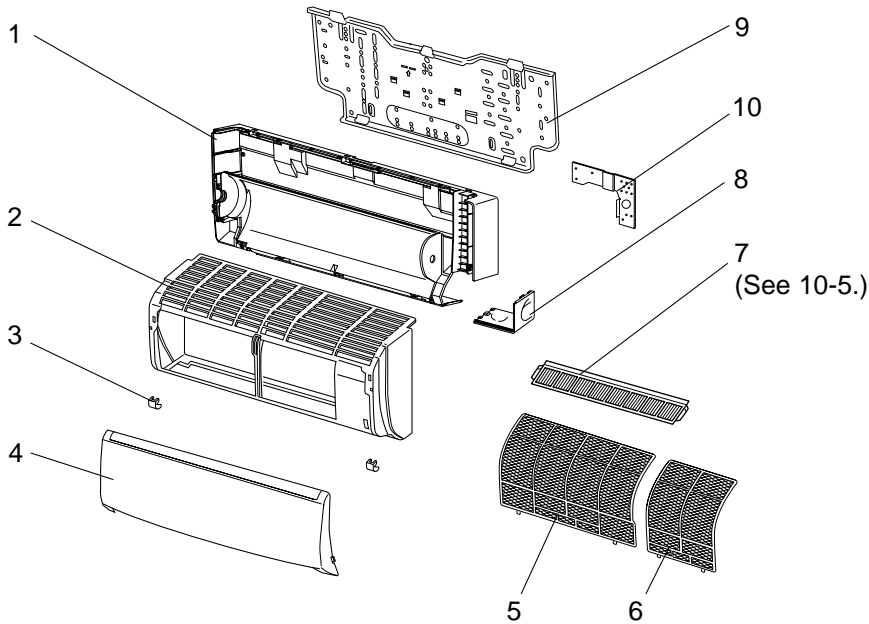


10-2. RoHS PARTS LIST (RoHS compliant)

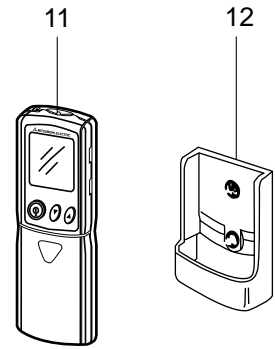
MS-A09WA

MS-A12WA

1. INDOOR UNIT STRUCTURAL PARTS



2. ACCESSORY AND REMOTE CONTROLLER



1. INDOOR UNIT STRUCTURAL PARTS

| No. | RoHS | Part No. | Part name | Symbol in Wiring Diagram | Q'ty/unit | | | | Remarks |
|-----|------|-------------|-----------------------------|--------------------------|-----------|-----|----------|-----|------------------|
| | | | | | MS-A09WA | | MS-A12WA | | |
| | | | | | | - 1 | | - 1 | |
| 1 | G | E12 A32 234 | BOX | | 1 | 1 | 1 | 1 | |
| 2 | G | E12 A49 000 | PANEL ASSEMBLY | | 1 | 1 | 1 | 1 | Including No.3,4 |
| 3 | G | E12 913 067 | SCREW CAP | | 2 | 2 | 2 | 2 | 2PCS/SET |
| 4 | G | E12 915 010 | FRONT PANEL | | 1 | 1 | 1 | 1 | |
| 5 | G | E12 915 100 | CATECHIN AIR FILTER (LEFT) | | 1 | 1 | 1 | 1 | |
| 6 | G | E12 916 100 | CATECHIN AIR FILTER (RIGHT) | | 1 | 1 | 1 | 1 | |
| 7 | G | — | AIR CLEANING FILTER | | 1 | 1 | 1 | 1 | MAC-415FT-E |
| 8 | G | E12 A32 975 | CORNER BOX (RIGHT) | | 1 | 1 | 1 | 1 | |
| 9 | G | E12 913 970 | INSTALLATION PLATE | | 1 | 1 | 1 | 1 | |
| 10 | G | E12 A49 978 | CONDUIT PLATE | | 1 | | 1 | | |

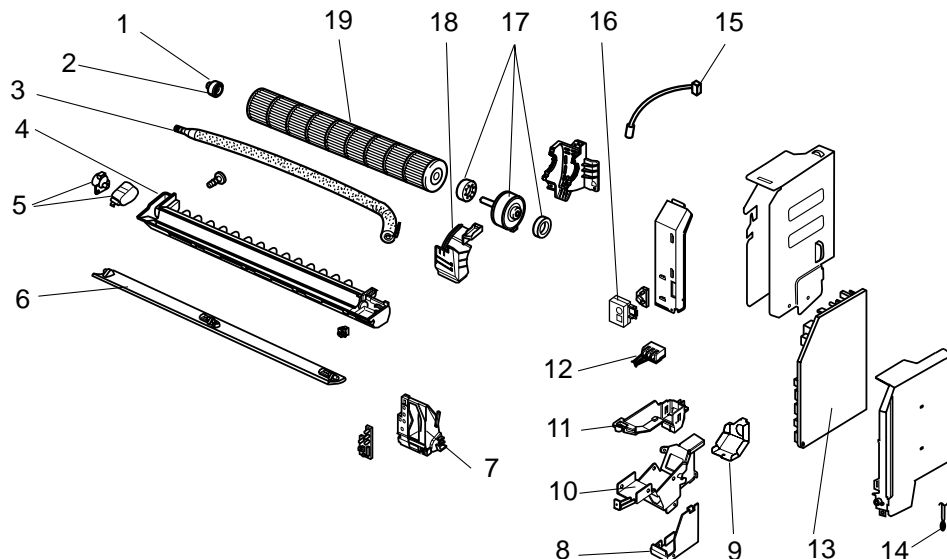
2. ACCESSORY AND REMOTE CONTROLLER

| | | | | | | | | | |
|----|---|-------------|--------------------------|--|---|---|---|---|-------|
| 11 | G | E12 A49 426 | REMOTE CONTROLLER | | 1 | | 1 | | KM06C |
| 11 | G | E12 C30 426 | REMOTE CONTROLLER | | | 1 | | 1 | KM07L |
| 12 | G | E12 527 083 | REMOTE CONTROLLER HOLDER | | 1 | 1 | 1 | 1 | |

MS-A09WA

MS-A12WA

3. INDOOR UNIT ELECTRICAL PARTS AND FUNCTIONAL PARTS



| No. | RoHS | Part No. | Part name | Symbol in Wiring Diagram | Q'ty/unit | | | | Remarks |
|-----|------|-------------|--|--------------------------|-----------|---|----------|---|--------------|
| | | | | | MS-A09WA | | MS-A12WA | | |
| | | | | | - | 1 | - | 1 | |
| 1 | G | E12 751 509 | BEARING MOUNT | | 1 | 1 | 1 | 1 | |
| 2 | G | E12 001 504 | SLEEVE BEARING | | 1 | 1 | 1 | 1 | |
| 3 | G | E12 897 702 | DRAIN HOSE | | 1 | 1 | 1 | 1 | |
| 4 | G | E12 A49 235 | NOZZLE ASSEMBLY | | 1 | 1 | 1 | 1 | |
| 5 | G | E12 897 303 | VANE MOTOR UNIT (HORIZONTAL) | MV | 1 | 1 | 1 | 1 | UP & DOWN |
| 6 | G | E12 913 040 | HORIZONTAL VANE | | 1 | 1 | 1 | 1 | |
| 7 | G | E12 915 095 | POWER MONITOR RECEIVER P.C. BOARD HOLDER | | 1 | 1 | 1 | 1 | |
| 8 | G | E12 A49 979 | CONDUIT COVER | | 1 | | 1 | | |
| 9 | G | E12 C30 979 | CONDUIT COVER | | | 1 | | 1 | |
| 10 | G | E12 A49 780 | TERMINAL BLOCK COVER | | 1 | | 1 | | |
| | G | E12 C30 780 | TERMINAL BLOCK COVER | | | 1 | | 1 | |
| 11 | G | E12 A49 779 | TERMINAL BLOCK HOLDER | | 1 | | 1 | | |
| | G | E12 C30 779 | TERMINAL BLOCK HOLDER | | | 1 | | 1 | |
| 12 | G | E12 A49 375 | TERMINAL BLOCK | TB | 1 | 1 | 1 | 1 | |
| 13 | G | E12 A49 452 | ELECTRONIC CONTROL P.C. BOARD *1 | | 1 | 1 | | | AUTO RESTART |
| | G | E12 A50 452 | ELECTRONIC CONTROL P.C. BOARD *1 | | | | 1 | 1 | AUTO RESTART |
| 14 | G | E12 897 308 | ROOM TEMPERATURE THERMISTOR | RT11 | 1 | 1 | 1 | 1 | |
| 15 | G | E12 897 307 | INDOOR COIL THERMISTOR | RT12 | 1 | 1 | 1 | 1 | |
| 16 | G | E12 915 782 | SWITCH HOLDER | | 1 | 1 | 1 | 1 | |
| 17 | G | E12 A49 300 | INDOOR FAN MOTOR *2 | MF | 1 | 1 | 1 | 1 | RC0H30-□ □ |
| 18 | G | E12 897 333 | MOTOR BAND | | 1 | 1 | 1 | 1 | |
| 19 | G | E12 897 302 | LINE FLOW FAN | | 1 | 1 | 1 | 1 | |

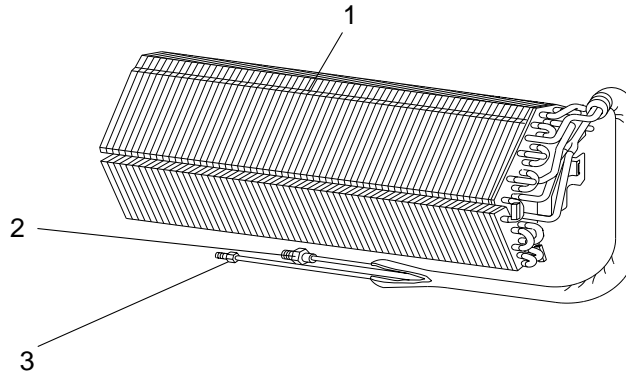
*1 Including SW P.C. BOARD and POWER MONITOR RECEIVER P.C. BOARD

*2 Including FAN MOTOR RUBBER MOUNT (2 PCS/SET)

MS-A09WA

MS-A12WA

4. INDOOR UNIT HEAT EXCHANGER



| No. | RoHS | Part No. | Part name | Symbol in Wiring Diagram | Q'ty/unit | | | | Remarks |
|-----|------|-------------|-----------------------|--------------------------|-----------|-----|----------|-----|---------|
| | | | | | MS-A09WA | | MS-A12WA | | |
| 1 | G | E12 A49 620 | INDOOR HEAT EXCHANGER | | 1 | - 1 | | - 1 | |
| | G | E12 A50 620 | INDOOR HEAT EXCHANGER | | | | 1 | 1 | |
| 2 | G | E12 151 666 | UNION (GAS) | | 1 | 1 | | | φ3/8 |
| | G | E12 155 666 | UNION (GAS) | | | | 1 | 1 | φ1/2 |
| 3 | G | E12 151 667 | UNION (LIQUID) | | 1 | 1 | 1 | 1 | φ1/4 |

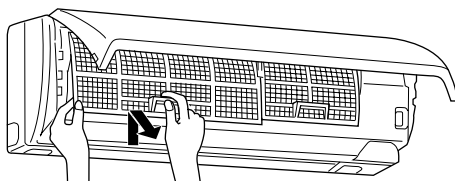
5. AIR CLEANING FILTER (ANTI-ALLERGY ENZYME FILTER)

- AIR CLEANING FILTER removes fine dust of 0.01 micron from air by means of static electricity.
- Normal life of AIR CLEANING FILTER is 1 year.
If AIR CLEANING FILTER is to be washed, soak AIR CLEANING FILTER in water (when showing dirt, in lukewarm water) and rinse it delicately, without removing the filter from the frame about once every 3 months.
- Clogged AIR CLEANING FILTER may reduce the air conditioner capacity or cause frost on the air outlet.
- Do not remove or attach AIR CLEANING FILTER during unit operation.

| Model | Part No. |
|----------------------|-------------|
| MS-A09WA MS-A12WA | MAC-415FT-E |

Replacement of the air cleaning filter

- (1) Remove the catechin air filter(left one).
The air cleaning filter is not attached to the right side catechin air filter.



- (2) Remove the air cleaning filter(Blue bellows type) from the catechin air filter.

