



**DUCTLESS SPLIT
MULTI DUCTLESS SPLIT
PACKAGED TERMINAL (PTAC)
THROUGH-THE-WALL (TTW)**

**SUPERIOR COMFORT
FOR THE GLOBAL MARKETPLACE**

2015



AIR CONDITIONING



***SUPERIOR COMFORT
FOR THE GLOBAL MARKETPLACE***

TABLE OF CONTENTS



THE TECHNOLOGY of air conditioning is only part of the daily focus at Gree. We are absolutely committed to continually advancing the performance of our product line, with a never-satisfied approach to R&D. But we're also intensely interested in delivering superior customer service, unparalleled global leadership and planetwide environmental stewardship. That's the Gree formula for success, and it's one that brings true comfort to the world.

CHECK US OUT ON THE WEB AT:
WWW.GREECOMFORT.COM



FIRST LOOK

MEET THE GREE FAMILY 4-5

DUCTLESS SPLIT

TERRA 6-9

NEO 10-13

RIO 14-17

U-MATCH 18-23

MULTI DUCTLESS SPLIT

+MULTI 24-29

SUPER +MULTI 30-35

PACKAGED TERMINAL (PTAC)

E-TAC 36-39

THROUGH-THE-WALL (TTW)

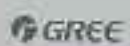
T2600 40-41

IN THE PIPELINE

MULTI 21 42

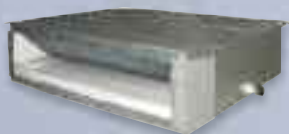
CROWN 43

VIREO 44-45



66

Simply elegant. Simply efficient.



GREE SPANS THE GLOBE.

For decades, the world's most respected HVAC brands have depended on Gree to manufacture top-quality systems to the most exacting specifications. So it's no surprise that we've quickly built a devoted following for our own brands, and are continuing to expand the Gree family of products into so many new areas. Guided by our dual objectives of performance and efficiency, Gree offers an unparalleled assortment of comfort solutions for the global marketplace.

A PIONEERING APPROACH.

Innovative thinking is a way of life at Gree, where we're constantly seeking new ways to improve each product. And we've found it in such ideas as energy-saving inverter technology, corrosion-resistant condenser coils, temperature-sensing remote controllers, bacteria-controlling photocatalytic filters, intelligent defrosting technology and more.

THE PROOF IS IN THE COMFORT.

Wherever you turn, in virtually every corner of every continent, you'll find people experiencing comfortable indoor climate control, courtesy of Gree. In fact, one of every three air conditioners in the world is made by Gree. Think about that. You don't build a 33% share worldwide without proven testing, vertical integration, smart innovations and day-to-day reliability.



**DUCTLESS
SPLIT**

TERRA

NEO

RIO

U-MATCH

**MULTI
DUCTLESS
SPLIT**

+MULTI

SUPER +MULTI

**PACKAGED
TERMINAL (PTAC)
E-TAC**

**THROUGH-
THE-WALL
ROOM**

T2600

IN THE PIPELINE

MULTI21

CROWN

VIRO

**EARTH FRIENDLY & EFFICIENT
GREECOMFORT.COM
855.452.0005**



DUCTLESS SPLIT

TERRA

NEO

RIO

U-MATCH

MULTI DUCTLESS SPLIT

+MULTI

SUPER +MULTI

PACKAGED TERMINAL (PTAC)

E-TAC

THROUGH- THE-WALL ROOM

T2600

IN THE PIPELINE

MULTI21

CROWN

VIREO

TERRA

SAVE ENERGY, PROTECT THE ENVIRONMENT.

THE FUTURE OF COMFORT IS HERE.

Firmly positioned at the top of the spectrum of high-efficiency air conditioners, you'll find TERRA ductless wall mount heat pump systems to be the most advanced of all our heat/cool product lines. TERRA leads the Gree family in features, functionality, energy efficiency and environmental friendliness. Despite their unparalleled performance, TERRA units draw little attention to themselves during actual use. The sleek, contemporary design quietly fades into the background of any decor – even the most modern. But its effects are certainly felt by all those seeking comfort. Users appreciate the highly intuitive wireless remote controller, with built-in I FEEL functionality for unprecedented personal comfort control. The latest G-10 Inverter technology powers each unit, and all TERRA systems are intelligently engineered for maximum energy efficiency. Air quality is improved by our state-of-the-art photocatalytic filter and X-fan, which inhibits mildew growth and eliminates up to 99.9% of bacteria and viruses. All in all, it's easy to see how TERRA has built a global reputation for energy-efficient comfort.

ADVANCED FEATURES

- Highest Efficiency - G10 Inverter Technology
- 4-way Airflow Operation (Swing)
- Waterfall Heating Airflow
- 7 Fan Speeds-from Mute to Turbo
- Gold Fin Condenser
- Photocatalytic Filter
- I-Feel Function
- Low Ambient Cooling to 5°F on select models
- Optional Wired Tether Controller
- Low Voltage Start-up
- Intelligent Defrost
- Intelligent Pre-heating
- Three Comfortable Sleep Modes
- Dry Anti-mildew Function
- LED Display
- Self-Diagnosis
- Memory Function 24-hour Timer
- Control Lock
- Fan Delay Function
- Energy Saving Function





- **HIGH EFFICIENCY,
UP TO 27 SEER**
- **UNPARALLELED
PERFORMANCE**
- **ADVANCED
AIRFLOW DESIGN**
- **WIDE RANGE
OF SIZES**
- **EASY COMFORT
CONTROL**



EARTH FRIENDLY & EFFICIENT
GREECOMFORT.COM
855.452.0005



TERRA



TERRA heat pump systems are all about creating a comfortable environment where people can thrive. We achieve this through advanced features like the "I FEEL" function, which uses the remote to sense temperatures and adjust air flow for optimum comfort. Energy savings are an important added bonus in that equation, and TERRA units are relentlessly focused on reducing power consumption and maximizing savings.

Advanced Mode Control
for energy savings, quietness,
sleep comfort and more

Two-stage filter

*First prevents dust and dirt clogs,
while the second works toward
improved Indoor Air Quality*



4-Way Airflow

with remote-controlled swing louvers



*Temperature
Sensing Remote
Controller*



*Optional Wired
Tether Controller*

TERRA heat pump systems are truly that – a system – engineered to work in harmony for maximum comfort, efficiency and energy savings. Indoor unit, outdoor unit, remote controller and optional wired tether controller were all designed with the end user in mind. Easy, intuitive operation is important to you, which is why it will always be important to us.

G10 Inverter Technology

*powers the outdoor unit,
for enhanced performance
across the board*



MODEL		TERRA09HP230V1A	TERRA12HP230V1A	TERRA18HP230V1B	TERRA24HP230V1B
System Type		HEAT PUMP			
Power Supply		208-230V / 60Hz	208-230V / 60Hz	208-230V / 60Hz	208-230V / 60Hz
Rated Current Cooling	Amps	5.7	6.0	8.0	9.8
Rated Current Heating	Amps	7.0	7.5	8.4	11.4
SYSTEM PERFORMANCE					
Cooling Capacity (Min-Max)	Btu/h	9,000 (3,500-9,600)	12,000 (3,100-13,000)	18,000 (3,412-22,178)	24,000 (6,824-29,343)
Heating Capacity (Min-Max)	Btu/h	9,800 (2,200-11,000)	13,000 (2,400-14,000)	25,000 (3,412-23,202)	25,000 (7,506-37,532)
SEER/EER		27 / 14.5	25 / 12.8	21 / 12.5	21 / 12.5
HSPF/COP		9.0 / 3.8	9.0 / 3.5	10.0 / 3.5	10.0 / 3.2
ENERGY STAR		YES	YES	YES	YES
INDOOR UNIT					
Air Flow (Min-Max)	CFM	118 - 418	118 - 453	282 - 559	294 - 647
Sound Pressure Level (Min-Max)	db(A)	23 - 42	24 - 44	33 - 51	38 - 52
Unit Size (WxHxD)	in	34.1 x 11.5 x 8.2	34.1 x 11.5 x 8.2	40.1 x 12.6 x 9.1	46.4 x 12.8 x 10.4
Package Size (WxHxD)	in	37.2 x 14.9 x 11.7	37.2 x 14.9 x 11.7	43.2 x 15.6 x 13.4	49.2 x 16.2 x 14.0
Net / Gross (Packaged) Wt.	lbs	24 / 31	24 / 31	31 / 39	39 / 47
OUTDOOR UNIT					
Compressor Type		DC INVERTER-DRIVEN			
Sound Pressure Level	db(A)	49	49	66	69
Unit Dimension (WxHxD)	in	35.4 x 23.5 x 14.9	35.4 x 23.5 x 14.9	37.6 x 27.6 x 15.6	38.6 x 31.1 x 16.8
Package Dimension (WxHxD)	in	37.3 x 25.4 x 16.5	37.3 x 25.4 x 16.5	40.5 x 29.5 x 18	42.6 x 33.7 x 19.2
Net / Gross (Packaged) Wt.	lbs	86 / 90	87 / 92	108 / 118	154 / 165
Refrigerant / Charge	oz	R410A / 45.9	R410A / 45.9	R410A / 56.4	R410A / 91.7
INSTALLATION					
Line Set Size (Liquid - Suction)	in	1/4" - 1/2"	1/4" - 1/2"	1/4" - 5/8"	1/4" - 5/8"
Pre-Charge	ft	25	25	25	25
Max. Line Run	ft	50	66	82	98
Max. Elevation	ft	33	33	33	33
MCA	Amps	10	10	15	20
MOCP	Amps	15	15	20	30
Interconnecting wire	AWG14 / 4	AWG14 / 4	AWG14 / 4	AWG14 / 4	AWG14 / 4
Limited Warranty*		5-Year Parts / 7-Year Compressor			

* See Limited Warranty Document for details. Product specification subject to change without notice; please consult technical specifications for details. Actual product appearance may vary from images shown.





DUCTLESS SPLIT

TERRA

NEO

RIO

U-MATCH

MULTI DUCTLESS SPLIT

+MULTI

SUPER +MULTI

PACKAGED TERMINAL (PTAC)

E-TAC

THROUGH- THE-WALL ROOM

T2600

IN THE PIPELINE

MULTI21

CROWN

VIREO

neo

FIGHT THE HEAT AND STILL BE KIND TO THE ENVIRONMENT.

SUSTAINABLE AND ENERGY EFFICIENT

For sustainability and energy efficiency, Gree's NEO Series is at the head of its class. With up to 22 SEER and an Energy Star rating on select models, NEO is the most advanced ductless mini split system designed for single zone applications in your home. Traditional heating and cooling systems rely on long stretches of ductwork resulting in significant energy loss and higher energy bills. In contrast, ductless NEO systems drastically reduce energy loss with cutting edge features like their built-in fan delay function, air flow direction control, and innovative defrost feature which operates only when needed. Adding to NEO's superior sustainability is its gold fin condenser, which protects it from external corrosion thus giving NEO an extended operating life. And with its intelligent sleep function and quiet operation, you'll rest easily knowing that NEO is kind to the environment while providing you with maximum comfort.

ADVANCED FEATURES

- High Efficiency Inverter Technology (Up to 22 SEER)
- Gold Fin Condenser
- Sleep Function Options
- Intelligent Defrost
- I-Feel Function
- Low Ambient Cooling to 5°F (230V systems)
- Intelligent Pre-heating
- Auto Swing (Vertical)
- Multiple Fan Speeds
- Memory Function
- Compact and Quiet Design
- Fan Delay
- Dry Mode
- Auto Clean
- Timer
- Self Diagnosis Function
- Control Lock
- LED Display

Optional Wired
Tether Controller





- **HIGH EFFICIENCY, UP TO 22 SEER**
- **EFFICIENT DUCTLESS DESIGN**
- **RUGGED CONSTRUCTION**
- **MULTIPLE FAN SPEEDS**
- **QUIET COMFORT**



Temperature
Sensing Remote
Controller

INNOVATIVE PRODUCTS come from manufacturers like Gree who are committed to the future. Our NEO Series delivers the highest quality home heating and cooling units engineered to meet the demands of today's consumers. At Gree, our research and development technicians are continually inventing ways to revolutionize modern day comfort.

EARTH FRIENDLY & EFFICIENT
GREECOMFORT.COM
855.452.0005



neo

MODEL		NEO09HP115V1A	NEO12HP115V1A	NEO09HP230V1A	NEO12HP230V1A
System Type		HEAT PUMP			
Power Supply		115V / 60Hz	115V / 60Hz	208-230V/60Hz	208-230V / 60Hz
Rated Current Cooling	Amps	8.2	12	2.8	4.5
Rated Current Heating	Amps	8.5	14.5	3.0	5.2
SYSTEM PERFORMANCE					
Cooling Cap (Min-Max)	Btu/h	9,000 (2,559-11,601)	12,000 (2,661-13,307)	9,000 (3,500-9,600)	12,000 (3,100-13,000)
Heating Cap (Min-Max)	Btu/h	9,500 (2,423-12,966)	13,000 (2,900-13,989)	9,800 (2,200-11,000)	13,000 (2,400-14,000)
SEER/EER		22 / 13.2	20 / 12.0	22 / 14.2	20 / 12.0
HSPF/COP		9.8 / 4.0	9.6 / 3.2	9.2 / 3.8	9.2 / 3.2
ENERGY STAR		YES	YES	YES	YES
INDOOR UNIT					
Air Flow (Min-Max)	CFM	206 - 335	206 - 335	218 - 306	218 - 335
Sound Pressure Level (Min-Max)	db(A)	32 - 40	33 - 42	32 - 42	33 - 44
Unit Size (WxHxD)	in	33.3 x 10.8 x 7.1	33.3 x 10.8 x 7.1	33.3 x 10.8 x 7.1	33.3 x 10.8 x 7.1
Package Size (WxHxD)	in	36.1 x 14.5 x 10.1	36.1 x 14.5 x 10.1	36.1 x 14.6 x 10.2	36.1 x 14.6 x 10.2
Net / Gross (Packaged) Wt.	lbs	21 / 28	21 / 28	22 / 29	22 / 29
OUTDOOR UNIT					
Compressor Type		DC INVERTER-DRIVEN			
Sound Pressure Level	db(A)	50	52	50	52
Unit Dimension (WxHxD)		33.4 x 21.3 x 12.6	33.4 x 21.3 x 12.6	33.4 x 21.3 x 12.6	33.4 x 23.2 x 12.6
Package Dimension (WxHxD)	in	34.7 x 14.3 x 23.4	34.7 x 14.3 x 23.4	34.6 x 22.8 x 14.1	34.7 x 25.4 x 14.3
Net / Gross (Packaged) Wt.	lbs	74 / 83	76 / 85	79 / 90	88 / 97
Refrigerant / Charge	oz	R410A / 41.3	R410A / 45.9	R410A / 45.9	R410A / 45.9
INSTALLATION					
Line Set Size (Liquid - Suction)	in	1/4" - 3/8"	1/4" - 3/8"	1/4" - 3/8"	1/4" - 3/8"
Pre-Charge	ft	25	25	25	25
Max. Line Run	ft	50	66	50	66
Max. Elevation	ft	33	33	33	33
MCA	Amps	20	20	10	10
MOCP	Amps	30	30	15	15
Interconnecting wire			AWG14 / 4		
Ambient Cooling Operating Range			5~109 F		
Ambient Heating Operating Range			5~75 F		

GREE'S NEO SERIES HEATING AND COOLING SYSTEMS are engineered with advanced features designed to give you peace of mind and a good night's sleep. NEO's high efficiency inverter technology achieves a rating as high as 22 SEER, and its innovative defrost feature reduces energy loss and consumption. For your personal comfort, the intelligent sleep function allows you to program a cycle tailored to your own sleeping pattern, saving energy and lowering utility costs.

MODEL		NEO18HP230V1A	NEO24HP230V1A	NEO30HP230V1A	NEO36HP230V1A
System Type		HEAT PUMP			
Power Supply		208-230V / 60Hz	208-230V / 60Hz	208-230V / 60Hz	208-230V / 60Hz
Rated Current Cooling	Amps	6.7	7.9	12.1	17.4
Rated Current Heating	Amps	7.3	9.3	12.5	17.9
SYSTEM PERFORMANCE					
Cooling Cap (Min-Max)	Btu/h	18,000 (5,970-22,350)	21,400 (9,600-25,000)	28,000 (9,500-30,000)	33,600 (7,400-36,000)
Heating Cap (Min-Max)	Btu/h	19,800 (4,100-22,000)	23,000 (4,300-26,000)	28,400 (10,000-33,000)	34,600 (15,000-36,000)
SEER/EER		18 / 12.0	18 / 12.0	16 / 9.3	16 / 8.2
HSPF/COP		10.0/3.5	10.0 / 3.2	8.2 / 2.9	8.2/2.5
ENERGY STAR		YES	YES		
INDOOR UNIT					
Air Flow (Min-Max)	CFM	324 - 500	353 - 588	412 - 706	412 - 736
Sound Pressure Level (Min-Max)	db(A)	35 - 49	37 - 53	47 - 57	49 - 59
Unit Size (WxHxD)	in	37.0 x 11.7 x 7.9	39.7 x 12.4 x 8.6	53.1 x 12.8 x 10.0	53.1 x 12.8 x 10.0
Package Size (WxHxD)	in	39.8 x 15 x 11.2	42.4 x 15.7 x 12.9	56.7 x 16.6 x 14.1	56.7 x 16.6 x 14.1
Net / Gross (Packaged) Wt.	lbs	24 / 31	30 / 38	44 / 60	44 / 60
OUTDOOR UNIT					
Compressor Type		DC INVERTER-DRIVEN TWIN ROTARY			
Sound Pressure Level	db(A)	56	58	62	65
Unit Dimension (WxHxD)	in	37.6 x 27.6 x 15.6	38.6 x 31.1 x 16.8	38.6 x 31.1 x 16.8	38.6 x 31.1 x 16.8
Package Dimension (WxHxD)	in	40.5 x 29.0 x 18.5	42.6 x 33.7 x 19.2	42.6 x 33.7 x 19.2	42.6 x 33.7 x 19.2
Net / Gross (Packaged) Wt.	lbs	99 / 110	132 / 146	154 / 163	161 / 170
Refrigerant / Charge	oz	R410A / 49.4	R410A / 56.4	R410A / 84.7	R410A / 91.7
INSTALLATION					
Line Set Size (Liquid - Suction)	in	1/4" - 1/2"	1/4" - 5/8"	1/4" - 5/8"	1/4" - 5/8"
Pre-Charge	ft	25	25	25	25
Max. Line Run	ft	82	82	100	100
Max. Elevation	ft	33	33	33	33
MCA	Amps	13	16	20	25
MOCP	Amps	20	25	30	35
Interconnecting wire			AWG14 / 4		
Ambient Cooling Operating Range			5~109 F		
Ambient Heating Operating Range			5~75 F		

* See Limited Warranty Document for details. Product specification subject to change without notice; please consult technical specifications for details. Actual product appearance may vary from images shown.



On select models

EARTH FRIENDLY & EFFICIENT
GREECOMFORT.COM
855.452.0005



DUCTLESS SPLIT

TERRA

NEO

RIO

U-MATCH

MULTI DUCTLESS SPLIT

+MULTI

SUPER +MULTI

PACKAGED TERMINAL (PTAC)

E-TAC

THROUGH- THE-WALL ROOM

T2600

IN THE PIPELINE

MULTI21

CROWN

VIREO

BEING COOL DOESN'T HAVE TO COME AT A PRICE.

EXTRAORDINARY COMFORT AND VALUE

You don't need to sacrifice comfort to save money on your utility bills. The RIO is not only economical; it is packed with innovative features that ensure a pleasant home environment while still providing energy savings. With a design that is compact and features Gree's high efficiency G10 inverter technology, RIO systems achieve a 16 SEER rating for all sizes and models. Every RIO is engineered to maintain steady temperature cycles for maximum comfort, and the Comfortable Sleep Mode function ensures whisper quiet operation. Cost effective attributes such as intelligent defrost and low voltage start-up guarantee a reduction of energy loss. Through our commitment to product research and development, RIO gives you low ambient cooling to 5°F (208-230V systems), multiple fan speeds and intelligent pre-heating. And RIO's dry anti-mildew function and self-diagnosis capabilities dramatically minimize the need to spend time or money caring for your RIO system.

ADVANCED FEATURES

- High Efficiency Inverter Technology
- 16 SEER Efficiency all sizes
- Low Ambient Cooling to 5°F (230V systems)
- Low Voltage Start-up
- Intelligent Defrost
- Intelligent Pre-heating
- Comfortable Sleep Mode
- Auto Swing (Vertical)
- Multiple Fan Speeds
- Dry Anti-mildew Function
- LED Display
- Automatic Operation
- Self-diagnosis
- Memory Function
- Timer
- Control Lock





- **HIGH EFFICIENCY,
UP TO 16 SEER**
- **G10 INVERTER
TECHNOLOGY**
- **INTELLIGENT
DEFROST**
- **SELF-DIAGNOSIS
FUNCTIONS**
- **SIMPLE
OPERATION**



EARTH FRIENDLY & EFFICIENT
GREECOMFORT.COM
855.452.0005



RIO



STAYING COOL can really be a pain in your wallet. When you consider that you likely spend more on heating and cooling your home than on running lights, appliances and electronics combined, it makes economic sense to choose a system that will reduce your energy consumption. RIO is the smart choice for those seeking lower utility bills and higher comfort.



Temperature
Sensing Remote
Controller



ENERGY EFFICIENCY is not only important for our planet's future; it enables you to better enjoy the world you are living in right now. Gree stands out as a leading developer and manufacturer of the most energy efficient and environmentally friendly systems on the market today, providing comfort for here and now, and hereafter.

MODEL		RIO09HP115V1A	RIO12HP115V1A	RIO09HP230V1B	RIO12HP230V1B	RIO18HP230V1A	RIO24HP230V1A
System Type		HEAT PUMP					
Power Supply		115V / 60Hz	115V / 60Hz	208-230V / 60Hz	208-230V / 60Hz	208-230V / 60Hz	208-230V / 60Hz
Rated Current Cooling	Amps	9.0	15.0	3.9	5.4	7.9	11.5
Rated Current Heating	Amps	9.5	15.5	3.4	4.7	11.2	12.0
SYSTEM PERFORMANCE							
Cooling Capacity (Min-Max)	Btu/h	9,000 (3,500-11,000)	11,800 (3,300-12,500)	9,000 (3,800-11,500)	12,000 (3,300-12,500)	18,000 (4,500-21,000)	22,000 (6,400-24,000)
Heating Capacity (Min-Max)	Btu/h	9,800 (2,500-11,000)	13,000 (3,400-13,500)	9,000 (3,300-11,500)	12,000 (3,400-12,500)	23,000 (4,000-23,000)	26,600 (4,100-26,600)
SEER/EER		16 / 12.0	16 / 9.4	16 / 10.2	16 / 9.8	16 / 11.1	16 / 10.0
HSPF/COP		8.6 / 3.5	8.6 / 2.9	8.5 / 3.4	8.5 / 3.4	8.5 / 2.8	9.5 / 3.0
INDOOR UNIT							
Air Flow (Min-Max)	CFM	188 - 329	200 - 341	141 - 330	153 - 341	271 - 471	206 - 589
Sound Pressure Level (Min-Max)	db(A)	32 - 40	32 - 40	26 - 43	28 - 44	34 - 48	34 - 49
Unit Size (WxHxD)	in	30.3 x 11.1 x 7.9	30.3 x 11.1 x 7.9	30.3 x 11.1 x 7.9	30.3 x 11.1 x 7.9	34 x 12.0 x 8.5	39.7 x 12.4 x 8.7
Package Size (WxHxD)	in	33.3 x 13.6 x 10.9	33.3 x 13.6 x 10.9	33.3 x 13.9 x 10.9	33.3 x 13.9 x 10.9	37.3 x 15.1 x 12.2	42.4 x 15.7 x 12.9
Net / Gross (Packaged) Wt.	lbs	19 / 26	19 / 26	19 / 25	20 / 27	27 / 35	33 / 44
OUTDOOR UNIT							
Compressor Type		DC INVERTER-DRIVEN TWIN ROTARY					
Sound Pressure Level	db(A)	53	55	49	52	56	53
Unit Dimension (WxHxD)	in	33.4 x 21.2 x 12.6	33.4 x 21.2 x 12.6	28.0 x 21.7 x 12.5	28.0 x 21.7 x 12.5	37.6 x 27.6 x 15.6	37.6 x 27.6 x 15.6
Package Dimension (WxHxD)	in	34.7 x 23.4 x 14.3	34.7 x 23.4 x 14.3	30.5 x 23.9 x 13.8	30.5 x 23.9 x 13.8	40.5 x 29.5 x 18.0	40.5 x 29.5 x 18.0
Net / Gross (Packaged) Wt.	lbs	75 / 84	75 / 84	64 / 73	68 / 77	106 / 117	115 / 126
Refrigerant / Charge	oz	R410A / 37	R410A / 40.6	R410A / 26.1	R410A / 35.3	R410A / 45.9	R410A / 54.7
INSTALLATION							
Line Set Size (Liquid - Suction)	in	1/4" - 3/8"	1/4" - 3/8"	1/4" - 3/8"	1/4" - 3/8"	1/4" - 1/2"	1/4" - 1/2"
Pre-Charge	ft	25	25	25	25	25	25
Max. Line Run	ft	66	66	50	50	82	82
Max. Elevation	ft	33	33	33	33	33	33
MCA	Amps	13	15	10	10	15	16
MOCP	Amps	20	25	15	15	25	25
Interconnecting wire		AWG14 / 4	AWG14 / 4	AWG14 / 4	AWG14 / 4	AWG14 / 4	AWG14 / 4
Limited Warranty*		5-Year Parts / 7-Year Compressor					

* See Limited Warranty Document for details. Product specification subject to change without notice; please consult technical specifications for details. Actual product appearance may vary from images shown.





DUCTLESS SPLIT

TERRA

NEO

RIO

U-MATCH

MULTI DUCTLESS SPLIT

+MULTI

SUPER +MULTI

PACKAGED TERMINAL (PTAC)

E-TAC

THROUGH- THE-WALL ROOM

T2600

IN THE PIPELINE

MULTI21

CROWN

VIREO

U-MATCH

NOTABLE COMFORT, UNOBTRUSIVE STYLING

CLIMATE CONTROL SOLUTIONS FOR EVERY COMMERCIAL NEED

Powered by Gree's G10 inverter technology, the U-Match Series offers the most energy efficient solutions for a wide range of commercial climate control needs. U-Match systems are available in a choice of three sleek indoor options: Ceiling Cassette, Slim Duct or Universal Floor/Ceiling units. Each is united – through a one-to-one match – with the outdoor G10 Inverter Heat Pump, which uses variable frequency, ensuring steady operation and eliminating harsh stop-and-start cycles. This is not only environmentally friendly, it also results in higher comfort, energy- and cost-efficiency, and prolonged service life. The U-Match system guarantees quiet operation – somewhere between a whisper and a normal conversation – while providing enough power to cool indoor spaces all the way down to 0°F. Indoor units are available in various sizes to create individual solutions for any commercial building owner's requirements, and all are designed to provide quiet and unobtrusive performance. All you will notice is the comfort.

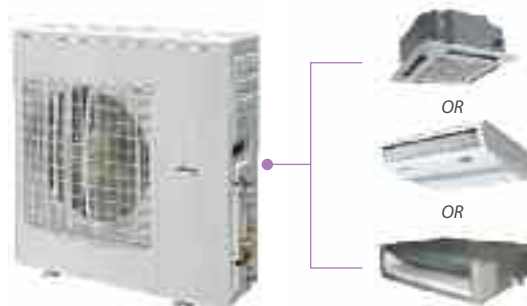
ADVANCED FEATURES

- G-10 Inverter control
- Heavy Gauge Steel Cabinet
- Sound Levels down to 56 DB on outdoor units
- Low Ambient Cooling down to 0°F
- R410A Refrigerant
- Multi-point Diagnostics
- Multi Speed Fans
- Swing Louvers
- Cleanable Air Filters
- Remote Controller or Wired Tether Controller available with select models
- Power Failure Recovery



SYSTEM CONFIGURATION DIAGRAM

Select one of the following:





- **HIGH EFFICIENCY, UP TO 20 SEER**
- **FOUR INDOOR UNIT OPTIONS**
- **DESIGNED FOR LIMITED SPACES**
- **VERSATILE CHOICES**
- **ONE-TO-ONE CONFIGURATIONS**



EARTH FRIENDLY & EFFICIENT
GREECOMFORT.COM
855.452.0005



U-MATCH



Ceiling Cassette

Suitable for any room; installs easily in suspended ceilings.



Universal Floor & Ceiling Units

Slender, lightweight and attractive; ideal for limited spaces. Suspend from ceiling or mount low on wall.



Slim Concealed Duct

Hides away above suspended ceiling or in closet space; delivers air via ducting or suitable ceiling or wall grilles.



Optional Wired Tether Controller



Optional Remote Controller

LEADING THE WAY as the manufacturer of one-third of the world's HVAC products, Gree has become the proven global leader in energy-efficient, technically progressive air conditioners. Our commitment to research and development leads to progressive heating and cooling technology and innovative solutions designed to deliver the highest comfort with the most advanced energy efficiency.

U-Match Inverter Heat Pump

Our G10 inverter technology saves energy, reduces outdoor noise and keeps room temperature steady.



OUTDOOR UNIT		UMAT18HP230V1AO	UMAT24HP230V1AO	UMAT30HP230V1AO	UMAT36HP230V1AO	UMAT42HP230V1AO	UMAT48HP230V1AO
System Type		HEAT PUMP					
Power Supply		208/230V / 60Hz	208/230V / 60Hz	208/230V / 60Hz	208/230V / 60Hz	208/230V / 60Hz	208/230V / 60Hz
Rated Current Cooling	Amps	12.8	19.4	20.0	23.8	24.3	34.3
Rated Current Heating	Amps	12.3	20.5	21.0	24.3	25.1	33.3
SYSTEM PERFORMANCE							
Cooling Capacity (Min-Max)	Btu/h	17,100 (5,400-18,700)	23,800 (8,200-29,000)	28,200 (8,800-31,400)	34,000 (10,800-39,000)	39,500 (11,000-41,000)	48,000 (20,400-50,500)
Heating Capacity (Min-Max)	Btu/h	18,400 (4,700-22,200)	27,200 (8,200-32,400)	31,200 (8,200-33,600)	41,000 (9,800-49,500)	44,000 (12,000-51,000)	54,500 (17,500-61,500)
SEER/EER		16 / 10.1	16 / 10.7	20 / 10.4	16 / 10.4	16 / 8.9	16 / 8.7
HSPF/COP		9 / 10.2	9 / 11.5	9 / 12.5	9 / 10.9	9 / 9.8	9 / 11.3
OUTDOOR UNIT							
Compressor Type		DC INVERTER-DRIVEN TWIN ROTARY					
Sound Pressure Level	db(A)	56	57	58	63	61	59
Unit Dim (LxWxH)	in	37.6 x 27.6 x 15.6	38.6 x 31.1 x 16.8	38.6 x 31.1 x 16.8	43.6 x 43.3 x 17.3	37.7 x 53.1 x 16.2	37.7 x 53.1 x 16.2
Package Dim (LxWxH)	in	40.5 x 29.5 x 18.0	42.6 x 33.7 x 19.2	42.6 x 33.7 x 19.2	45.6 x 48.6 x 19.4	41.1 x 59.1 x 17.8	41.1 x 59.1 x 17.8
Net / Gross (Packaged) Wt.	lbs	106 / 115	152 / 163	159 / 180	205 / 223	210 / 232	232 / 254
Refrigerant / Charge	oz	R410A / 49.4	R410A / 77.6	R410A / 84.7	R410A / 123.5	R410A / 130.5	R410A / 141.1
INSTALLATION							
Line Set Size (Liquid - Suction)	in	1/4" - 1/2" Flared	3/8" - 5/8" Flared	3/8" - 5/8" Flared	3/8" - 5/8" Flared	3/8" - 5/8" Flared	3/8" - 5/8" Flared
Pre-Charge	ft	25	25	25	25	25	25
Max. Line Run	ft	66	98	98	98	164	164
Max. Elevation	ft	49	49	49	49	98	98
MCA	Amps	17	24	24	29	31	45
MOCP/Breaker Size	Amps	25	40	40	45	50	70
Interconnecting Wire		AWG14 / 4	AWG14 / 4	AWG14 / 4	AWG14 / 4	AWG14 / 4	AWG14 / 4
Ambient Cooling Operating Range	°F °C	0 ~ 115 -17 ~ 46	0 ~ 115 -17 ~ 46	0 ~ 115 -17 ~ 46	0 ~ 115 -17 ~ 46	0 ~ 115 -17 ~ 46	0 ~ 115 -17 ~ 46
Ambient Heating Operating Range	°F °C	0 ~ 75 -17 ~ 24	0 ~ 75 -17 ~ 24	0 ~ 75 -17 ~ 24	0 ~ 75 -17 ~ 24	0 ~ 75 -17 ~ 24	0 ~ 75 -17 ~ 24
Limited Warranty*		5-Year Parts / 7-Year Compressor					

* See Limited Warranty Document for details. Product specification subject to change without notice; please consult technical specifications for details. Actual product appearance may vary from images shown.





UMatch
MODELS

INDOOR UNIT		UMAT18HP230V1AC	UMAT24HP230V1AC	UMAT30HP230V1AC	UMAT36HP230V1AC	UMAT42HP230V1AC	UMAT48HP230V1AC
System Type		HEAT PUMP					
Power Supply		208/230V / 60Hz	208/230V / 60Hz	208/230V / 60Hz	208/230V / 60Hz	208/230V / 60Hz	208/230V / 60Hz
Cooling Cap (Min-Max)	Btu/h	17,100 (5,400-18,700)	23,800 (8,200-29,000)	28,200 (8,800-31,400)	34,000 (10,800-39,000)	39,500 (11,000-41,000)	48,000 (20,400-50,500)
Heating Cap (Min-Max)	Btu/h	18,400 (4,700-22,200)	27,200 (8,200-32,400)	31,200 (8,200-33,600)	41,000 (9,800-49,500)	44,000 (12,000-51,000)	54,500 (17,500-61,500)
Airflow (Max)	CFM	445	765	880	1,095	1,095	1,350
Sound Pressure Level (Min-Max)	db(A)	37 - 47	38 - 47	40 - 49	43 - 51	43 - 51	41 - 53
Unit Dim (LxWxH)	in	26.2 x 23.5 x 9.4	36.1 x 33.1 x 9.4	36.1 x 33.1 x 12.6	36.1 x 33.1 x 12.6	36.1 x 33.1 x 12.6	35.8 x 35.8 x 11.4
Package Dim (LxWxH)	in	30.4 x 28.9 x 11.8	45.2 x 37.7 x 13.4	45.2 x 37.7 x 16.5	45.2 x 37.7 x 16.5	45.2 x 37.7 x 16.5	40.3 x 39.1 x 14.8
Net / Gross (Packaged) Wt.	lbs	44 / 53	60 / 84	71 / 97	71 / 97	71 / 97	95 / 110
Line Set Size (Liquid - Suction)	in	1/4" - 1/2" Flared	3/8" - 5/8" Flared	3/8" - 5/8" Flared	3/8" - 5/8" Flared	3/8" - 5/8" Flared	3/8" - 5/8" Flared
PART NUMBER		UMAT18GRILLE	UMAT24GRILLE	UMAT30GRILLE	UMAT36GRILLE	UMAT42GRILLE	UMAT48GRILLE
Unit Dim (LxWxH)	in	26.4 x 26.4 x 2.0	37.5 x 37.5 x 2.4	37.5 x 37.5 x 2.4	37.5 x 37.5 x 2.4	37.5 x 37.5 x 2.4	40.9 x 40.9 x 2.6
Package Dim (LxWxH)	in	30.0 x 30.0 x 4.1	40.7 x 40.9 x 5.2	40.7 x 40.9 x 5.2	40.7 x 40.9 x 5.2	40.7 x 40.9 x 5.2	44.8 x 44.8 x 5.5
Net / Gross (Packaged) Wt.	lbs	8 / 11	15 / 24	15 / 24	15 / 24	15 / 24	18 / 27

* See Limited Warranty Document for details. Product specification subject to change without notice; please consult technical specifications for details.
Actual product appearance may vary from images shown.

CEILING CASSETTE

UMatch
MODELS

INDOOR UNIT		UMAT18HP230V1AD	UMAT24HP230V1AD	UMAT30HP230V1AD	UMAT36HP230V1AD	UMAT42HP230V1AD	UMAT48HP230V1AD
System Type		HEAT PUMP					
Power Supply		208/230V / 60Hz	208/230V / 60Hz	208/230V / 60Hz	208/230V / 60Hz	208/230V / 60Hz	208/230V / 60Hz
Cooling Cap (Min-Max)	Btu/h	17,100 (5,400-19,800)	23,800 (7,400-29,000)	28,200 (8,200-29,600)	34,000 (10,800-39,000)	39,500 (12,000-42,500)	48,000 (20,400-49,500)
Heating Cap (Min-Max)	Btu/h	18,800 (4,700-23,200)	27,200 (8,200-32,400)	31,200 (8,200-33,600)	41,000 (9,800-49,500)	44,000 (13,000-52,500)	54,500 (17,500-58,500)
Airflow (Max)	CFM	585	820	820	1,175	1,175	1,470
Sound Pressure Level (Min-Max)	db(A)	28 - 40	40 - 47	40 - 47	44 - 53	44 - 53	45 - 55
Unit Dim (LxWxH)	in	40.8 x 28.4 x 10.5	50.4 x 22.0 x 10.6	50.4 x 22.0 x 10.6	48.3 x 30.5 x 11.4	48.3 x 30.5 x 11.4	52.8 x 29.5 x 13.8
Package Dim (LxWxH)	in	44.2 x 31.4 x 12.7	53.1 x 23.5 x 11.1	53.1 x 23.5 x 11.1	52.7 x 34.5 x 12.0	52.7 x 34.5 x 12.0	56.0 x 33.0 x 17.0
Net / Gross (Packaged) Wt.	lbs	73 / 84	75 / 86	75 / 86	101 / 117	101 / 117	124 / 143
Line Set Size	in	1/4" - 1/2" Flared	3/8" - 5/8" Flared	3/8" - 5/8" Flared	3/8" - 5/8" Flared	3/8" - 5/8" Flared	3/8" - 5/8" Flared

* See Limited Warranty Document for details. Product specification subject to change without notice; please consult technical specifications for details.
Actual product appearance may vary from images shown.

SLIM CONCEALED DUCT

INDOOR UNIT		UMAT18HP230V1AF	UMAT24HP230V1AF	UMAT30HP230V1AF	UMAT36HP230V1AF	UMAT42HP230V1AF	UMAT48HP230V1AF
System Type		HEAT PUMP					
Power Supply		208/230V / 60Hz	208/230V / 60Hz	208/230V / 60Hz	208/230V / 60Hz	208/230V / 60Hz	208/230V / 60Hz
Cooling Cap (Min-Max)	Btu/h	17,100 (5,400-19,800)	23,800 (8,200-27,800)	28,200 (8,800-31,400)	34,000 (10,800-39,000)	39,500 (12,000-42,500)	48,000 (20,400-50,500)
Heating Cap (Min-Max)	Btu/h	19,100 (4,700-23,200)	27,200 (8,200-30,600)	31,200 (8,200-33,600)	41,000 (9,800-49,500)	44,000 (13,000-52,500)	54,500 (17,500-61,500)
Airflow (Max)	CFM	585	705	880	1,115	1,115	1,350
Sound Pressure Level (Min-Max)	db(A)	32 - 44	40 - 49	38 - 49	46 - 54	47 - 55	46 - 56
Unit Dim (LxWxH)	in	40.8 x 27.6 x 8.9	40.8 x 27.6 x 8.9	55.9 x 27.6 x 9.6	55.9 x 27.6 x 9.6	55.9 x 27.6 x 9.6	66.9 x 27.6 x 9.6
Package Dim (LxWxH)	in	52.9 x 32.4 x 12.4	52.9 x 32.4 x 12.4	60.9 x 32.6 x 13.6	60.9 x 32.6 x 13.6	60.9 x 32.6 x 13.6	72.0 x 32.6 x 13.6
Net / Gross (Packaged) Wt.	lbs	86 / 106	88 / 110	106 / 124	106 / 123	110 / 128	130 / 150
Line Set Size (Liquid - Suction)	in	1/4" - 1/2" Flared	3/8" - 5/8" Flared	3/8" - 5/8" Flared	3/8" - 5/8" Flared	3/8" - 5/8" Flared	3/8" - 5/8" Flared

* See Limited Warranty Document for details. Product specification subject to change without notice; please consult technical specifications for details.
Actual product appearance may vary from images shown.

UNIVERSAL FLOOR / CEILING UNIT





DUCTLESS
SPLIT

TERRA

NEO

RIO

U-MATCH

**MULTI
DUCTLESS
SPLIT**

+MULTI

SUPER +MULTI

PACKAGED
TERMINAL (PTAC)

E-TAC

THROUGH-
THE-WALL
ROOM

T2600

IN THE PIPELINE

MULTI21

CROWN

VIREO



IT ALL FITS TOGETHER FOR COMFORT.

DESIGN FLEXIBILITY AND MAXIMUM COMFORT

The highly versatile +Multi systems, featuring Gree's remarkably efficient low frequency G10 inverter-driven compressor and Eco-friendly R410A refrigerant, are among the most advanced ductless split heat pumps available anywhere today. Providing year-round energy efficient heating and cooling for up to five separate indoor zones with one outdoor unit, +Multi systems are perfect for both residential and light commercial applications. Whether you choose Wall Mount, Ceiling Cassette, Concealed Duct, Universal Floor/Ceiling, Mini-Console, or any combination of all five indoor units, you have the flexibility to create a unique +Multi system to suit your own personal layout and design. Our reliable G10 technology gives you maximum efficiency, achieving up to 16 SEER, which results in reduced energy consumption and waste. The +Multi ductless system, with I-FEEL function wireless remote control, lets you enjoy ultimate comfort in every room without bulky distribution boxes or long stretches of leaky ductwork.

ADVANCED FEATURES

- G-10 Inverter Control
- Heavy Gauge Steel Cabinet
- Sound Levels down to 56 DB on outdoor unit
- Low Ambient Cooling down to 5°F
- R410A Refrigerant
- Multi-point Diagnostics
- Multi Speed Fans
- Swing Louvers
- Cleanable Air Filters
- Infrared Remote Controller
- Wired Tether Controller on select models
- Power Failure Recovery



SYSTEM CONFIGURATION DIAGRAM





- **HIGH EFFICIENCY, UP TO 16 SEER**
- **ULTIMATE INTERIOR FLEXIBILITY**
- **FIVE INDOOR UNIT CHOICES**
- **IDEAL FOR RESIDENTIAL AND COMMERCIAL SPACES**
- **SUPERIOR COMFORT**



*42,000 BTU Multi-Room
Ductless Heat Pump*



*18,000 BTU Multi-Room
Ductless Heat Pump*

EARTH FRIENDLY & EFFICIENT
GREECOMFORT.COM
855.452.0005



+MULTI

GREE



High-Wall Units

Unobtrusive yet powerful, provides comfort and fits into any decor.

ZONE-BY-ZONE COMFORT complete in one system. +Multi constantly monitors the comfort levels in each zone and adjusts compressor speed and refrigerant flow accordingly. Our innovative design not only eliminates temperature swings typical of conventional stop-and-start HVAC systems, it uses significantly less energy.



Universal Floor & Ceiling Units

Slender, lightweight and attractive; ideal for limited spaces. Suspend from ceiling or mount low on wall.



Mini Floor Console

Great space saver. Only 8 3/4" deep. Mounts as low as 6" from floor.



Slim Concealed Duct

Hides away above suspended ceiling or in closet space; delivers air via ducting or suitable ceiling or wall grilles.



Ceiling Cassette

Suitable for any room; installs easily in suspended ceilings.



Infrared Remote Controller



Wired Tether Controller on select models

DESIGNED FOR DURABILITY, each +Multi system is engineered for long-lasting service. Gree's multi-room ductless inverter heat pumps are built to stand up to harsh conditions with heavy gauge rolled steel, and are finished with durable powder coat paint. Our enhanced Gold-Fin coating not only provides condenser coil protection from corrosion, it also improves hydrophilic properties and efficiency. These are just a few more reasons why so many depend on +Multi systems for their reliability and longevity.

OUTDOOR UNIT HP INVERTER		MULTI18HP230V1AO	MULTI24HP230V1AO	MULTI30HP230V1AO	MULTI36HP230V1AO	MULTI42HP230V1AO
System Type		HEAT PUMP				
Power Supply		208-230V/60Hz	208-230V/60Hz	208-230V/60Hz	208-230V/60Hz	208-230V/60Hz
Rated Current Cooling	Amps	7.6	13.5	15.3	19.2	19.5
Rated Current Heating	Amps	7.5	12.4	12.6	15.8	20.5
SYSTEM PERFORMANCE						
Cooling Capacity (Min-Max)	Btu/h	18,000 (7,000-21,000)	26,000 (7,500-33,000)	29,000 (7,500-34,000)	34,000 (8,530-34,120)	41,000 (8,530-46,403)
Heating Capacity (Min-Max)	Btu/h	19,000 (8,530-22,600)	29,000 (7,500-35,000)	30,400 (7,500-36,000)	35,800 (10,663-40,944)	44,500 (10,663-47,768)
Operation Range-Cooling	deg F	23~118	23~118	23~118	23~118	23~118
Operation Range-Heating	deg F	5~81	5~81	5~81	5~81	5~81
OUTDOOR UNIT						
Compressor Type		DC INVERTER-DRIVEN TWIN ROTARY				
Sound Pressure Level	db(A)	56	56	59	57	58
Unit Dimension (WxHxD)	in	35.4 x 23.5 x 14.9	37.2 x 27.6 x 15.6	36.2 x 31.1 x 16.8	38.5 x 31.2 x 15	40 x 43.5 x 17.4
Pkg. Dimension (WxHxD)	in	37.3 x 25.4 x 16.5	40.5 x 29.5 x 18	40.5 x 29.5 x 18	42.7 x 33.7 x 19.2	45.6 x 48.7 x 19.4
Net/Gross Weight	lbs	95 / 106	135 / 146	153 / 165	161 / 172	225 / 247
Condenser Coil type		COPPER/ALUMINUM WITH GOLD FIN COATING				
Max # Indoor Units		2	3	4	4	5
Refrigerant/Charge	oz	R410A / 47.6	R410A / 77.6	R410A / 102.3	R410A / 91.7	R410A / 169.3
Port Size (Liquid-Suction)	in	1/4" - 3/8"	1/4" - 3/8"	1/4" - 3/8"	1/4" - 3/8"	1/4" - 3/8"
Port Size (Liquid-Suction)	in	1/4" - 3/8"	1/4" - 3/8"	1/4" - 3/8"	1/4" - 3/8"	1/4" - 3/8"
Port Size (Liquid-Suction)	in		1/4" - 3/8"	1/4" - 3/8"	1/4" - 1/2"	1/4" - 1/2"
Port Size (Liquid-Suction)	in			1/4" - 3/8"	1/4" - 5/8"	1/4" - 1/2"
Port Size (Liquid-Suction)	in					1/4" - 5/8"
Pre-Charge	ft	33	98	131	131	164
Add. Refrigerant Charge	oz	0.2	0.2	0.2	0.2	0.2
Additional Feet Max. Total Piping Length	ft	66	230	230	230	262
Max. Equivalent Length (Outdoor to last Indoor Unit)	ft	33	66	66	82	82
Max./ Elevation (Outdoor to Indoor Unit)	ft	33	66	66	82	82
MCA	Amps	13	20	26	28	29
MOCP	Amps	25	30	45	45	50

* See Limited Warranty Document for details. Product specification subject to change without notice; please consult technical specifications for details. Actual product appearance may vary from images shown.





INDOOR UNIT		CAS12HP230V1AC		CAS18HP230V1AC		CAS24HP230V1AC	
System Type	HEAT PUMP						
Nominal Capacity-Cooling	Btu/h	11,946		15,359		22,867	
Nominal Capacity-Heating	Btu/h	13,652		17,065		27,304	
Power Supply		208~230V / 60Hz		208~230V / 60Hz		208~230V / 60Hz	
Airflow (Min-Max)	CFM	251 - 353		251 - 353		456 - 694	
Sound Pressure Level (Min-Max)	db(A)	42 - 46		42 - 46		35 - 39	
Unit Dimension (WxHxD)	in	22.5 x 22.5 x 9		22.5 x 22.5 x 9		33 x 33 x 9.5	
Package Dimension (WxHxD)	in	33.5 x 29 x 13		33.5 x 29 x 13		38 x 38 x 13	
Net / Gross (Packaged) Weight	lbs	40 / 51		40 / 51		62 / 77	
Piping Connections:	Gas/Suction	in	Φ3/8		Φ1/2		Φ5/8
	Liquid	in	Φ1/4		Φ1/4		Φ3/8
PART NUMBER - DISCHARGE GRILLE		CASGRILLE1SM		CASGRILLE1SM		CASGRILLE1LG	
	DECORATIVE DISCHARGE GRILLE						
Unit Dimension (WxHxD)	in	25.5 x 25.5 x 2		25.5 x 25.5 x 2		37.5 x 37.5 x 2.5	
Package Dimension (WxHxD)	in	29 x 26.5 x 4.5		29 x 26.5 x 4.5		41 x 40.5 x 5	
Net / Gross (Packaged) Weight	lbs	6/8		6/8		6.5/10	

* See Limited Warranty Document for details. Product specification subject to change without notice; please consult technical specifications for details.
Actual product appearance may vary from images shown.

CEILING CASSETTE



INDOOR UNIT		DUCT09HP230V1AD		DUCT12HP230V1AD		DUCT18HP230V1AD		DUCT24HP230V1AD	
System Type		HEAT PUMP							
Nominal Capacity-Cooling		Btu/h	8,533		11,946		15,359		24,232
Nominal Capacity-Heating		Btu/h	9,556		13,140		18,772		27,304
Power Supply			208~230V / 60Hz		208~230V / 60Hz		208~230V / 60Hz		208~230V / 60Hz
Airflow (Min-Max)		CFM	147 / 265		177 / 394		294 / 412		324 / 589
Sound Pressure Level (Min-Max)		db(A)	31 / 37		32 / 39		33 / 41		34 / 42
Unit Dimension (WxHxD)		in	27.5 x 24 x 7.8		27.5 x 24 x 7.9		35.5 x 24 x 7.9		43.5 x 24 x 7.9
Package Dimension (WxHxD)		in	35 x 29 x 12		35 x 29 x 12		44 x 29 x 12		52 x 29 x 12
Net / Gross (Packaged) Weight		lbs	49 / 60		51 / 64		60 / 79		68 / 90
Piping Connections: Gas/Suction Liquid		in	Φ3/8		Φ3/8		Φ1/2		Φ5/8
		in	Φ1/4		Φ1/4		Φ1/4		Φ3/8

* See Limited Warranty Document for details. Product specification subject to change without notice; please consult technical specifications for details.
Actual product appearance may vary from images shown.

SLIM CONCEALED DUCT



INDOOR UNIT		FLR09HP230V1AF		FLR12HP230V1AF		FLR18HP230V1AF		FLR24HP230V1AF	
System Type		HEAT PUMP							
Nominal Capacity-Cooling		Btu/h	8,533		11,946		17,065		22,867
Nominal Capacity-Heating		Btu/h	9,556		13,140		18,772		27,304
Power Supply			208~230V / 60Hz		208~230V / 60Hz		208~230V / 60Hz		208~230V / 60Hz
Airflow (Min-Max)		CFM	265 - 383		265 - 383		294 - 559		412 - 736
Sound Pressure Level (Min-Max)		db(A)	36 - 40		36 - 40		40 - 45		44 - 48
Unit Dimension (WxHxD)		in	48 x 27.5 x 9		48 x 27.5 x 9		48 x 27.5 x 9		48 x 27.5 x 9
Package Dimension (WxHxD)		in	53 x 32 x 12.5		53 x 32 x 12.5		53 x 32 x 12.5		53 x 32 x 12.5
Net / Gross (Packaged) Weight		lbs	88 / 110		88 / 110		88 / 110		100 / 120
Piping Connections:	Gas/Suction	in	Φ3/8		Φ3/8		Φ1/2		Φ5/8
	Liquid	in	Φ1/4		Φ1/4		Φ1/4		Φ3/8

* See Limited Warranty Document for details. Product specification subject to change without notice; please consult technical specifications for details.
Actual product appearance may vary from images shown.

UNIVERSAL FLOOR / CEILING UNIT



INDOOR UNIT		NEO09HP230V1AH		NEO12HP230V1AH		NEO18HP230V1AH	
System Type	HEAT PUMP						
Nominal Capacity-Cooling	Btu/h	9,000		12,000		18,000	
Nominal Capacity-Heating	Btu/h	9,800		13,000		19,800	
Power Supply		208~230V / 60Hz		208~230V / 60Hz		208~230V / 60Hz	
Running Current	Amp	0.17		0.17		0.32	
Airflow (Min-Max)	CFM	218 - 306		217 - 335		324 - 500	
Sound Pressure Level (Min-Max)	db(A)	32 - 42		33 - 44		35 - 49	
Unit Dimension (WxHxD)	in	33.3 x 10.8 x 8.5		33.3 x 10.8 x 8.5		37.0 x 11.7 x 7.9	
Package Dimension (WxHxD)	in	36.1 x 14.6 x 10.2		36.1 x 14.6 x 10.2		39.8 x 15.0 x 11.2	
Net / Gross (Packaged) Weight	lbs	22/29		22/29		24/31	
Piping Connections: Liq-Gas/Suction	in	Φ1/4-Φ3/8		Φ1/4-Φ3/8		Φ1/4-Φ1/2	

* See Limited Warranty Document for details. Product specification subject to change without notice; please consult technical specifications for details.
Actual product appearance may vary from images shown.

NEO HIGH-WALL UNIT



INDOOR UNIT		CONS09HP230V1AF		CONS12HP230V1AF		CONS18HP230V1AF	
System Type		HEAT PUMP					
Nominal Capacity-Cooling		Btu/h	8,874		11,946		18,089
Nominal Capacity-Heating		Btu/h	9,556		12,969		19,795
Power Supply			208~230V / 60Hz		208~230V / 60Hz		208~230V / 60Hz
Airflow (Min-Max)		CFM	147 - 294		165 - 353		188 - 383
Sound Pressure Level (Min-Max)		db(A)	25 - 40		27 - 43		33 - 48
Unit Dimension (WxHxD)		in	27.5 x 24 x 8.5		27.5 x 24 x 8.5		27.5 x 24 x 8.5
Package Dimension (WxHxD)		in	31 x 28 x 11		31 x 28 x 11		31 x 28 x 11
Net / Gross (Packaged) Weight		lbs	30/40		30/40		30/40
Piping Connections:	Gas/Suction	in	Φ3/8		Φ3/8		Φ1/2
	Liquid	in	Φ1/4		Φ1/4		Φ1/4

* See Limited Warranty Document for details. Product specification subject to change without notice; please consult technical specifications for details.
Actual product appearance may vary from images shown.

MINI FLOOR CONSOLE



EARTH FRIENDLY & EFFICIENT
GREECOMFORT.COM
855.452.0005



DUCTLESS
SPLIT

TERRA

NEO

RIO

U-MATCH

MULTI
DUCTLESS
SPLIT

+MULTI

SUPER +MULTI

PACKAGED
TERMINAL (PTAC)

E-TAC

THROUGH-
THE-WALL
ROOM

T2600

IN THE PIPELINE

MULTI21

CROWN

VIREO

GREE **SUPER**

THE CONFIGURATIONS, AND COMFORT, ARE SUPER.

MULTIPLE ROOM SOLUTIONS TO SUIT YOUR NEEDS

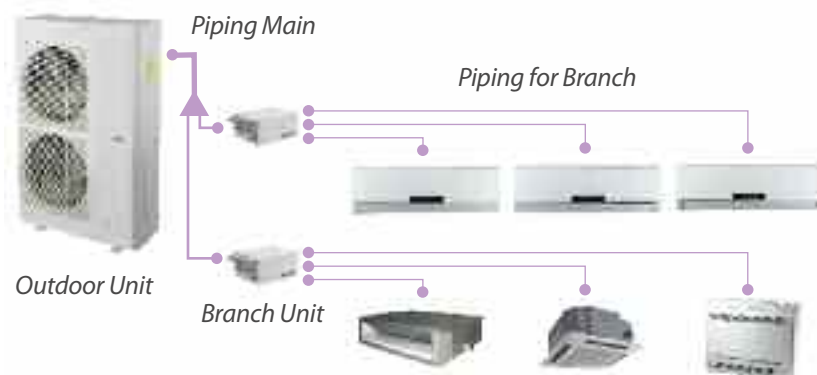
Thanks to Gree's Super +Multi systems, no heating and cooling project is too large to handle. For unsurpassed flexibility in heating and cooling multiple rooms, Gree offers you 2-port or 3-port BU Modules allowing one outdoor unit to connect to as many as 8 (48,000 Btu/h) or 9 zones (56,000 Btu/h). Piping length ranging from up to 140 feet to 476 feet (total sum of all piping) depending on the model gives you longer refrigerant line capabilities and offers you more choices when determining the location of indoor units. Like our other systems, the Super +Multi utilizes G10 inverter technology which reduces energy consumption while providing whisper-quiet operation with sound levels down to 57 decibels on outdoor unit. Eco-friendly R410 refrigerant, low ambient cooling down to 5°F, intelligent defrost, and multi-point diagnostics are among the many features engineered to provide maximum comfort together with the highest energy efficiency possible.

ADVANCED FEATURES

- G-10 Inverter Control
- Branch Unit Module for Multi-Port Connections
- Heavy Gauge Steel Cabinet
- Sound Levels down to 57 DB on outdoor units
- Low Ambient Cooling down to 5°F
- R410A Refrigerant
- Multi-point Diagnostics
- Multi Speed Fans
- Swing Louvers
- Cleanable Air Filters
- Infrared Remote Controller
- Wired Tether Controller on select models



SYSTEM CONFIGURATION DIAGRAM





- **HIGH EFFICIENCY, UP TO 16 SEER**
- **CONNECT UP TO NINE INDOOR UNITS**
- **FIVE INDOOR DESIGN OPTIONS**
- **ENERGY EFFICIENT AND RELIABLE**
- **ACCOMMODATES UP TO 476' OF PIPING (TOTAL SUM OF ALL PIPING)**

Branch Unit Expander Module allows simplified connections to all indoor units



*Super +Multi
Outdoor Unit*

EARTH FRIENDLY & EFFICIENT
GREECOMFORT.COM
855.452.0005



GREER+ SUPER



High-Wall Units

Unobtrusive yet powerful, provides comfort and fits into any decor.

ADVANCED G10 TECHNOLOGY

means better energy efficiency. Gree's outdoor units are engineered to operate at a steady revolution by using variable frequency to drive the compressor, causing gradual power increases and decreases. So, instead of running at maximum capacity then shutting off over and over again like conventional compressors, our systems run much more efficiently without those harsh start/stop cycles. With G10 technology, desired temperature is reached more quickly and maintained evenly, giving you a higher level of comfort along with energy savings.



Infrared Remote Controller



Wired Tether Controller on select models

Universal Floor & Ceiling Units

Slender, lightweight and attractive; ideal for limited spaces. Suspend from ceiling or mount low on wall.



Mini Floor Console

Great space saver. Mounts as low as six inches from floor.



Slim Concealed Duct

Hides away above suspended ceiling or in closet space; delivers air via ducting or suitable ceiling or wall grilles.



Ceiling Cassette

Suitable for any room; installs easily in suspended ceilings.



QUIET YET POWERFUL, Super +Multi zone inverter heat pump systems operate at an ultra low frequency with minimal vibration and more stability which results in very low outdoor sound levels. Though the compressor unit is quiet, it is powerful enough to cool indoor zones to a low 5°F, and has heating capabilities ranging from 5 to 81°F. No matter what the temperature is outside, Gree's Super +Multi systems have the power to accommodate most needs.

OUTDOOR UNIT HP INVERTER			MULTI48HP230V1AO	MULTI56HP230V1AO
Cooling Capacity	Btu/h		47,800 (3,412 - 54,592)	52,900 (3,412 - 61,416)
Heating Capacity	Btu/h		54,000 (4,094 - 59,369)	61,400 (4,094 - 63,212)
Power Supply V/Hz				
Rated Current (A) Cooling	Amps		23	25
Rated Current (A) Heating	Amps		20	23
Operating Range-Cooling	deg F		5-118	5-118
Operating Range-Heating	deg F		-4 ~75	-4 ~75
Sound Pressure Level	dB(A)		57	57
Max No. Indoor Units			8	9
Refrigerant			R410A	R410A
Connecting Pipe Diameter	Gas	in	Φ5/8	Φ5/8
	Liquid	in	Φ3/8	Φ3/8
Max. Total Piping Length (FT)	ft		476	476
Max. Equivalent Length (Outdoor to Last Indoor)	ft		230	230
Max. Elevation (Outdoor to Indoor Unit)	ft		99	99
Unit Dimension (WxHxD)	in		35 x 53 x 15	35 x 53 x 15
Package Dimension (WxHxD)	in		35 x 53 x 15	35 x 53 x 18
Net/Gross Weight	lbs		256/276	256/276

BU PORT EXPANDER MODULES			RFX12A	RFX13A
No. of IDU Can Connect	Btu/h		2	3
Power Supply	Btu/h		208 ~ 230V60Hz	208 ~ 230V60Hz
Rated Current	Amps		3.2	3.2
Connection Method	Amps		FLARE	FLARE
Connecting Pipe Dia. (To IDU)	Gas/Suction	in	Φ3/8	Φ3/8
	Liquid	in	Φ1/4	Φ1/4
Connecting Pipe Dia. (To ODU)	Gas/Suction	in	Φ5/8	Φ5/8
	Liquid	in	Φ3/8	Φ3/8
Maximum Connect	ft		2	3
Maximum Equivalent Length (BU To Last Indoor)	ft		60	60
Unit Dimension (WxHxD)	in		20.9 x 12.3 x 7.2	20.9 x 12.3 x 7.2
Package Dimension (WxHxD)	in		27.0 x 15.5 x 10.6	27.0 x 15.5 x 10.6
Net/Gross Weight	lbs		12 / 16	13 / 17

* See Limited Warranty Document for details. Product specification subject to change without notice; please consult technical specifications for details. Actual product appearance may vary from images shown.





INDOOR UNIT		CAS12HP230V1AC		CAS18HP230V1AC		CAS24HP230V1AC	
System Type	HEAT PUMP						
Nominal Capacity-Cooling	Btu/h	11,946		15,359		22,867	
Nominal Capacity-Heating	Btu/h	13,652		17,065		27,304	
Power Supply		208~230V / 60Hz		208~230V / 60Hz		208~230V / 60Hz	
Airflow (Min-Max)	CFM	251 - 353		251 - 353		456 - 694	
Sound Pressure Level (Min-Max)	db(A)	42 - 46		42 - 46		35 - 39	
Unit Dimension (WxHxD)	in	22.5 x 22.5 x 9		22.5 x 22.5 x 9		33 x 33 x 9.5	
Package Dimension (WxHxD)	in	33.5 x 29 x 13		33.5 x 29 x 13		38 x 38 x 13	
Net / Gross (Packaged) Weight	lbs	40 / 51		40 / 51		62 / 77	
Piping Connections:	Gas/Suction	in	Φ3/8		Φ1/2		Φ5/8
	Liquid	in	Φ1/4		Φ1/4		Φ3/8
PART NUMBER - DISCHARGE GRILLE		CASGRILLE1SM		CASGRILLE1SM		CASGRILLE1LG	
	DECORATIVE DISCHARGE GRILLE						
Unit Dimension (WxHxD)	in	25.5 x 25.5 x 2		25.5 x 25.5 x 2		37.5 x 37.5 x 2.5	
Package Dimension (WxHxD)	in	29 x 26.5 x 4.5		29 x 26.5 x 4.5		41 x 40.5 x 5	
Net / Gross (Packaged) Weight	lbs	6/8		6/8		6.5/10	

* See Limited Warranty Document for details. Product specification subject to change without notice; please consult technical specifications for details.
Actual product appearance may vary from images shown.

CEILING CASSETTE



INDOOR UNIT		DUCT09HP230V1AD		DUCT12HP230V1AD		DUCT18HP230V1AD		DUCT24HP230V1AD	
System Type		HEAT PUMP							
Nominal Capacity-Cooling		Btu/h	8,533		11,946		15,359		24,232
Nominal Capacity-Heating		Btu/h	9,556		13,140		18,772		27,304
Power Supply			208~230V / 60Hz		208~230V / 60Hz		208~230V / 60Hz		208~230V / 60Hz
Airflow (Min-Max)		CFM	147 / 265		177 / 394		294 / 412		324 / 589
Sound Pressure Level (Min-Max)		db(A)	31 / 37		32 / 39		33 / 41		34 / 42
Unit Dimension (WxHxD)		in	27.5 x 24 x 7.8		27.5 x 24 x 7.9		35.5 x 24 x 7.9		43.5 x 24 x 7.9
Package Dimension (WxHxD)		in	35 x 29 x 12		35 x 29 x 12		44 x 29 x 12		52 x 29 x 12
Net / Gross (Packaged) Weight		lbs	49 / 60		51 / 64		60 / 79		68 / 90
Piping Connections: Gas/Suction		in	Φ3/8		Φ3/8		Φ1/2		Φ5/8
Liquid		in	Φ1/4		Φ1/4		Φ1/4		Φ3/8

* See Limited Warranty Document for details. Product specification subject to change without notice; please consult technical specifications for details.
Actual product appearance may vary from images shown.

SLIM CONCEALED DUCT



INDOOR UNIT		FLR09HP230V1AF		FLR12HP230V1AF		FLR18HP230V1AF		FLR24HP230V1AF	
System Type		HEAT PUMP							
Nominal Capacity-Cooling		Btu/h	8,533		11,946		17,065		22,867
Nominal Capacity-Heating		Btu/h	9,556		13,140		18,772		27,304
Power Supply			208~230V / 60Hz		208~230V / 60Hz		208~230V / 60Hz		208~230V / 60Hz
Airflow (Min-Max)		CFM	265 - 383		265 - 383		294 - 559		412 - 736
Sound Pressure Level (Min-Max)		db(A)	36 - 40		36 - 40		40 - 45		44 - 48
Unit Dimension (WxHxD)		in	48 x 27.5 x 9		48 x 27.5 x 9		48 x 27.5 x 9		48 x 27.5 x 9
Package Dimension (WxHxD)		in	53 x 32 x 12.5		53 x 32 x 12.5		53 x 32 x 12.5		53 x 32 x 12.5
Net / Gross (Packaged) Weight		lbs	88 / 110		88 / 110		88 / 110		100 / 120
Piping Connections:	Gas/Suction	in	Φ3/8		Φ3/8		Φ1/2		Φ5/8
	Liquid	in	Φ1/4		Φ1/4		Φ1/4		Φ3/8

* See Limited Warranty Document for details. Product specification subject to change without notice; please consult technical specifications for details.
Actual product appearance may vary from images shown.

UNIVERSAL FLOOR / CEILING UNIT



INDOOR UNIT			NEO09HP230V1AH		NEO12HP230V1AH		NEO18HP230V1AH	
System Type	HEAT PUMP							
Nominal Capacity-Cooling	Btu/h	9,000		12,000		18,000		
Nominal Capacity-Heating	Btu/h	9,800		13,000		19,800		
Power Supply		208~230V / 60Hz		208~230V / 60Hz		208~230V / 60Hz		
Running Current	Amp	0.17		0.17		0.32		
Airflow (Min-Max)	CFM	218 - 306		217 - 335		324 - 500		
Sound Pressure Level (Min-Max)	db(A)	32 - 42		33 - 44		35 - 49		
Unit Dimension (WxHxD)	in	33.3 x 10.8 x 8.5		33.3 x 10.8 x 8.5		37.0 x 11.7 x 7.9		
Package Dimension (WxHxD)	in	36.1 x 14.6 x 10.2		36.1 x 14.6 x 10.2		39.8 x 15.0 x 11.2		
Net / Gross (Packaged) Weight	lbs	22/29		22/29		24/31		
Piping Connections: Liq-Gas/Suction	in	Φ1/4-Φ3/8		Φ1/4-Φ3/8		Φ1/4-Φ1/2		

* See Limited Warranty Document for details. Product specification subject to change without notice; please consult technical specifications for details.
Actual product appearance may vary from images shown.

NEO HIGH-WALL UNIT



INDOOR UNIT		CONS09HP230V1AF		CONS12HP230V1AF		CONS18HP230V1AF	
System Type		HEAT PUMP					
Nominal Capacity-Cooling		Btu/h	8,874		11,946		18,089
Nominal Capacity-Heating		Btu/h	9,556		12,969		19,795
Power Supply			208~230V / 60Hz		208~230V / 60Hz		208~230V / 60Hz
Airflow (Min-Max)		CFM	147 - 294		165 - 353		188 - 383
Sound Pressure Level (Min-Max)		db(A)	25 - 40		27 - 43		33 - 48
Unit Dimension (WxHxD)		in	27.5 x 24 x 8.5		27.5 x 24 x 8.5		27.5 x 24 x 8.5
Package Dimension (WxHxD)		in	31 x 28 x 11		31 x 28 x 11		31 x 28 x 11
Net / Gross (Packaged) Weight		lbs	30/40		30/40		30/40
Piping Connections:	Gas/Suction	in	Φ3/8		Φ3/8		Φ1/2
	Liquid	in	Φ1/4		Φ1/4		Φ1/4

* See Limited Warranty Document for details. Product specification subject to change without notice; please consult technical specifications for details.
Actual product appearance may vary from images shown.

MINI FLOOR CONSOLE



EARTH FRIENDLY & EFFICIENT
GREECOMFORT.COM
855.452.0005



**DUCTLESS
SPLIT**

TERRA

NEO

RIO

U-MATCH

**MULTI
DUCTLESS
SPLIT**

+MULTI

SUPER +MULTI

**PACKAGED
TERMINAL (PTAC)**

E-TAC

**THROUGH-
THE-WALL
ROOM**

T2600

IN THE PIPELINE

MULTI21

CROWN

VIREO



A COOL CROWD-PLEASER FOR GUESTS AS WELL AS OWNERS.

CLIMATE CONTROL MADE SIMPLE

With its impressive array of features and benefits, the Gree E-TAC is the perfect solution for heating and cooling hospitality, healthcare and specialty residential installations. Occupants and owners alike will appreciate the E-TAC for its bi-fan motor configuration, which ensures whisper quiet operation while providing the highest level of energy efficiency with ratings up to 12.2 EER. Energy-smart technology, like the programmable sleep timer mode which automatically turns the unit off, allows you to keep heating and cooling expenses down while at the same time guarantees optimal personal comfort. Controls that are easy to use, and a large digital display make E-TAC simple for guests to operate. You can also connect the unit to wired or wireless wall thermostats in non-programmed or deluxe 7-day programmable designs. The Gree E-TAC lets you manage energy usage by giving you preset adjustable factory temperature limits, so guests as well as owners stay in control of their indoor environment.

ADVANCED FEATURES

- Intelligent Technology with On-Board Diagnostics
- Wall Thermostat Interface
- Optional Infrared Remote Controller
- Silencer System with Aero-Quiet Fan
- Preset Adjustable Factory Setpoint Limits
- Energy-Efficient Operation
- Programmable Sleep Timer Mode for Automatic Shutoff
- Dry-Mode Dehumidification
- Easy-to-Use Controls; Large Digital Display
- Three Fan Speeds
- Power Interruption Restart
- Freeze Protection
- Large Assortment of Optional Accessories to Complement any Architecture
- Easy Retrofitting into most Competitive Wall Sleeves (without a kit)
- 5-year Limited Warranty
- Optional Outdoor Coil Sea Coast Protection available on select models

Optional
Remote
Controller



ACCESSORIES

Include Wall Sleeves, Rear Grille,
Sub Base and many other options





- **EFFICIENT OPERATION, UP TO 12.2 SEER**
- **CONTROLS EXPENSES MAXIMIZES COMFORT**
- **IDEAL FOR HOSPITALITY AND INSTITUTIONAL USE**
- **PROGRAMMABLE OPERATION**
- **BEST-IN-CLASS LIMITED WARRANTY**



SPECIFICALLY DESIGNED to serve the demanding requirements of hospitality, healthcare and specialty residential installations, the E-TAC line is more than a PTAC – it is a fully “Engineered Terminal Air Conditioner,” and it is setting a new standard for excellence and energy efficiency, worldwide.

EARTH FRIENDLY & EFFICIENT
GREECOMFORT.COM
855.452.0005



INDOOR AIR QUALITY has been shown to have a great effect on health, and depends largely on your HVAC system. Your well-being is important to us, which is why our E-TAC, with its unique fresh air vent system, is designed to allow adequate fresh air intake. Building owners can easily introduce up to 65 CFM of fresh outdoor air via a hidden two-position lever. Just one more way Gree strives to deliver ultimate comfort and control.



Remote
Controller
sold separately

Temperature setpoint
limits are preset at the factory,
but are adjustable – giving you
complete control.

No kit required
for quick retrofitting
into most competitive
wall sleeves.

Programmable modes
for dehumidification, sleep timing,
quiet and more.



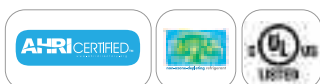
User-friendly
control panel with large
digital display makes operation
easy for all guests and residents.

Note:
External Grille and Cabinet Sold Separately

GREE'S DEPENDABILITY is recognized worldwide for excellence and reliability. All E-TACs provide peace of mind by delivering steadfast service backed by the best-in-class limited warranty and coverage. Maintenance is a breeze thanks to easy access to air filters and condenser coil, as well as E-TAC's nine-point diagnostics featuring self-check/self-correct, so you can rest assured your E-TAC will perform the way it should.

208/230V HEAT/COOL MODELS								
MODEL NUMBER	VOLTAGE RANGE	COOLING	CAPACITY* (BTUH)		HEATER (KW)	EER	COP	CHASSIS SHIP WT. (LBS)
			REV. CYC.	HEATING ELECTRIC				
ETAC-07HC230V15A-A	187-253	7,600 / 7,700	N/A	5,200/6,800	1.6/2.0	12.2/12.0	NA	126
ETAC-07HC230V20A-A	187-253	7,600 / 7,700	N/A	8,300/10,200	2.4/3.0	12.2/12.0	NA	126
ETAC-09HC230V15A-A	187-253	8,800 / 9,000	N/A	5,200/6,800	1.6/2.0	11.4/11.3	NA	128
ETAC-09HC230V20A-A	187-253	8,800 / 9,000	N/A	8,300/10,200	2.4/3.0	11.4/11.3	NA	128
ETAC-12HC230V15A-A	187-253	11,800 / 12,000	N/A	5,200/6,800	1.6/2.0	10.5/10.7	NA	132
ETAC-12HC230V20A-A	187-253	11,800 / 12,000	N/A	8,300/10,200	2.4/3.0	10.5/10.7	NA	132
ETAC-12HC230V30A-A	187-253	11,800 / 12,000	N/A	13,900/17,000	4.1/5.0	10.5/10.7	NA	132
ETAC-15HC230V20A-A	187-253	14,600 / 15,000	N/A	8,300/10,200	2.4/3.0	9.7/9.8	NA	141
ETAC-15HC230V30A-A	187-253	14,600 / 15,000	N/A	13,900/17,000	4.1/5.0	9.7/9.8	NA	141
208/230V HEAT PUMP MODELS								
ETAC-07HP230V15B-A	187-253	7,600/7,700	6,100/6,300	5,200/6,800	1.6/2.0	12.2/12.0	3.4/3.4	126
ETAC-07HP230V20B-A	187-253	7,600/7,700	6,100/6,300	8,300/10,200	2.4/3.0	12.2/12.0	3.4/3.4	126
ETAC-09HP230V15B-A	187-253	8,800/9,000	7,900/8,100	5,200/6,800	1.6/2.0	11.4/11.3	3.3/3.3	130
ETAC-09HP230V20B-A	187-253	8,800/9,000	7,900/8,100	8,300/10,200	2.4/3.0	11.4/11.3	3.3/3.3	130
ETAC-12HP230V15A-A	187-253	11,800/12,000	10,500/10,700	5,200/6,800	1.6/2.0	10.5/10.7	3.1/3.1	135
ETAC-12HP230V20A-A	187-253	11,800/12,000	10,500/10,700	8,300/10,200	2.4/3.0	10.5/10.7	3.1/3.1	135
ETAC-12HP230V30A-A	187-253	11,800/12,000	10,500/10,700	13,900/17,000	4.1/5.0	10.5/10.7	3.1/3.1	135
ETAC-15HP230V20B-A	187-253	14,200/14,500	13,000/13,300	8,300/10,200	2.4/3.0	9.7/9.8	3.0/3.0	143
ETAC-15HP230V30B-A	187-253	14,200/14,500	13,000/13,300	13,900/17,000	4.1/5.0	9.7/9.8	3.0/3.0	143
265V HEAT/COOL MODELS								
ETAC-07HC265V20B-A	239-292	7,700	N/A	10,200	3.0	12.0	NA	124
ETAC-07HC265V20B-A	239-292	9,000	N/A	10,200	3.0	11.3	NA	126
ETAC-12HC265V20A-A	239-292	12,000	N/A	10,200	3.0	10.7	NA	132
ETAC-12HC265V30A-A	239-292	12,000	N/A	17,000	5.0	10.7	NA	132
ETAC-15HC265V20A-A	239-292	15,000	N/A	10,200	3.0	9.8	NA	141
ETAC-15HC265V30A-A	239-292	15,000	N/A	17,000	5.0	9.8	NA	141
265V HEAT PUMP MODELS								
ETAC-07HC265V20A-A	239-292	7,700	6,300	10,200	3.0	12.0	3.4	124
ETAC-07HC265V20A-A	239-292	9,300	8,100	10,200	3.0	11.3	3.3	131
ETAC-09HC265V20A-A	239-292	12,000	10,700	10,200	3.0	10.7	3.1	135
ETAC-09HC265V30A-A	239-292	12,000	10,700	17,000	5.0	10.7	3.1	135
ETAC-12HC265V20A-A	239-292	14,500	13,300	10,200	3.0	9.8	3.0	140
ETAC-12HC265V30A-A	239-292	14,500	13,300	17,000	5.0	9.8	3.0	140

* See Limited Warranty Document for details. Product specification subject to change without notice; please consult technical specifications for details. Actual product appearance may vary from images shown.



EARTH FRIENDLY & EFFICIENT
GREECOMFORT.COM
855.452.0005



DUCTLESS
SPLIT

TERRA

NEO

RIO

U-MATCH

MULTI
DUCTLESS
SPLIT

+MULTI

SUPER +MULTI

PACKAGED
TERMINAL (PTAC)

E-TAC

THROUGH-
THE-WALL
ROOM

T2600

IN THE PIPELINE

MULTI21

CROWN

VIREO

T2600

2600 TTW

THE EFFICIENCY IS BUILT RIGHT IN.

THROUGH-THE-WALL COMFORT

Packed with features to save money while delivering season-long comfort, the T2600 is both sleek and rugged, with a timeless look that's built to stand the test of time. Operation and maintenance is a breeze, with a simple, digital touch-pad control panel and large, easy-to-read LED display. Single-button mode selection lets you choose cool, dry or heat (on select models), or fan-only with just one touch. Programmable operation with electronic setpoint limits and three speed fan selection lets users make easy adjustments every time.

**Easy Touchpad Controls
and LED Display**



Adjustable Airflow Control

Wireless
Remote
Controller

**Note: External Cabinet
and Outdoor Grille
Sold Separately**
(Part #: 26TTWSLEEVE)



THE MANY FEATURES OF THE T2600 INCLUDE: Electronic Setpoint Limits, Programmable Fan Operation, Compressor Start/Stop Time Guard, Power Failure Recovery, Adjustable Three-Speed Fan, Aero-Quiet Indoor Blower Wheel, Dual Motor Technology, Rugged Metal Construction, Digital Thermostat Touch-Pad Control Panel, Easy-to-Read LED Display, Directional Airflow Control, Easy-Out Front-Access Polymer Air Filter, Filter Alarm, Infrared Remote Controller, One-Button Mode Selection, Sleep Mode, Timer Mode, Dry Mode, Optional Privacy Lock. Fits most standard wall sleeves.

MODEL	26TTW09AC115V1A	26TTW12AC115V1A	26TTW09AC230V1A	26TTW12AC230V1A	26TTW09HC230V1A	26TTW12HC230V1A
System Type		COOLING ONLY			COOLING WITH ELECTRIC HEAT	
Voltage	115V	115V	208 / 230V	208 / 230V	208 / 230V	208 / 230V
Capacity (BtuH)	9,300	11,800	9,100 / 9,300	11,800 / 12,000	9,100 / 9,300	11,800 / 12,000
Current (Amps)	8.7	11.0	4.7 / 4.3	6.1 / 5.7	4.7 / 4.3	6.1 / 5.7
Power (Watts)	950	1200	930/950	1200-1220	930/950	1200-1220
EER	9.8	9.8	9.8 / 9.8	9.8 / 9.8	9.8 / 9.8	9.8 / 9.8
Moisture Removal (Pts/Hr)	2.32	3.49	2.32	3.49	2.32	3.49
Air Flow CFM (Min-Max)	235 - 282	235 - 282	235 - 282	235 - 282	223 - 270	223 - 270
Plug Config (NEMA#)	NEMA5-15P	NEMA5-15P	NEMA6-15P	NEMA6-15P	NEMA6-20P	NEMA6-20P
Power Cord Length (in)	96	96	72	72	72	72
Unit Width (in)	26.0	26.0	26.0	26.0	26.0	26.0
Unit Height (in)	15.6	15.6	15.6	15.6	15.6	15.6
Unit Depth (in)	21.2	21.2	21.2	21.2	21.2	21.2
Net / Gross (Packaged) Wt.	74 / 87	80 / 93	71/84	78 / 92	73 / 86	81 / 94
MODEL	26TTW09HP115V1A	26TTW09HP230V1A	26TTW12HP230V1A	26TTW07HP230V1A		
System Type		HEAT PUMP				
COOLING						
Voltage	115V	208 / 230V	208 / 230V	208 / 230V		
Capacity (BtuH)	9,000	9,100 / 9,300	11,500 / 17,000	7,200 / 7,400		
Current (Amps)	8.4	4.8 / 4.4	6.1 / 5.6	3.5 / 3.2		
Power (Watts)	920	940 / 960	1200 / 1220	680 / 700		
EER	9.8	9.7 / 9.7	9.6 / 9.6	10.6 / 10.6		
Moisture Removal (Pts/Hr)	2.32	2.32	3.49	1.37		
System Type		HEAT PUMP				
HEATING						
Capacity (BtuH)	8,500	8,600 / 8,800	11,200 / 11,400	6,600 / 6,800		
Current (Amps)	7.6	4.3 / 4.0	5.9 / 5.4	3.2 / 2.9		
Power (Watts)	830	840/860	1140/1160	620/640		
COP	3.0	3.0 / 3.0	2.9 / 2.9	3.1 / 3.1		
Air Flow CFM (Min-Max)	223 - 270	223 - 270	223 - 270	223 - 270		
Plug Config (NEMA#)	NEMA5-15P	NEMA6-20P	NEMA6-20P	NEMA6-20P		
Power Cord Length (in)	96	72	72	72		
Unit Width (in)	26.0	26.0	26.0	26.0		
Unit Height (in)	15.6	15.6	15.6	15.6		
Unit Depth (in)	21.2	21.2	21.2	21.2		
Net / Gross (Packaged) Wt.	78 / 91	86 / 99	83 / 96	76 / 89		

* See Limited Warranty Document for details. Product specification subject to change without notice; please consult technical specifications for details. Actual product appearance may vary from images shown.





MULTI21

GREE MULTI21

**DUCTLESS
SPLIT**

TERRA

NEO

RIO

U-MATCH

**MULTI
DUCTLESS
SPLIT**

+MULTI

SUPER +MULTI

**PACKAGED
TERMINAL (PTAC)**

E-TAC

**THROUGH-
THE-WALL
ROOM**

T2600

IN THE PIPELINE

MULTI21

CROWN

VIREO

THE VERSATILITY OF +MULTI WITH EVEN GREATER EFFICIENCY.

COMING SOON FROM GREE

In our ongoing effort to deliver outstanding comfort control and efficiency, Gree is developing the new Multi 21 Ductless System. It will feature all the outstanding advantages of the +Multi line but with a SEER rating of up to 21.



Temperature
Sensing Remote
Controller

CROWN

CROWN

- UP TO 30.5 SEER
- INFINITY HEATING DOWN TO -20°F
- 180° OF AIRFLOW
- LOCAL WIFI CONTROL



CROWN: A NEW JEWEL IN THE GREE PRODUCT LINE.

THE ULTIMATE COMBINATION OF BEAUTY AND FUNCTIONALITY

Soon to be available, the new Crown High-Wall Ductless Mini-Split systems will add a regal touch to any room. In 9,000, 12,000 and 18,000 BTU configurations, these elegant units will deliver powerful, efficient cooling and heating – with up to 30.5 SEER – while remaining quietly unobtrusive in any decor.

EARTH FRIENDLY & EFFICIENT
GREECOMFORT.COM
855.452.0005



DUCTLESS
SPLIT

TERRA

NEO

RIO

U-MATCH

MULTI
DUCTLESS
SPLIT

+MULTI

SUPER +MULTI

PACKAGED
TERMINAL (PTAC)

E-TAC

THROUGH-
THE-WALL
ROOM

T2600

IN THE PIPELINE

MULTI21

CROWN

VIREO



SOON TO BE AVAILABLE...

ADVANCED, ELEGANT AND ENERGY EFFICIENT

Also on the way from the Gree development team is the new, Energy Star-compliant, Vireo line. Never before has it been so easy to maintain constant indoor comfort, no matter the outdoor conditions. Vireo has you covered with a multitude of features that help you live well and stay comfortable, all controlled easily – either with the wireless infrared remote controller or optional Wired Tether controller. With the advanced I FEEL mode, for example, Vireo senses the temperature surrounding the remote controller, then adjusts air flow and temperature accordingly to create maximum comfort in all the right places. In heating mode, the system guards against bothersome chills with its intelligent pre-heating feature which delays the fan until the coil has warmed up to keep it from blowing cold air into the room. Every part of the room can stay comfortable by adjusting vertical swing louvers in multiple directions, including continuous sweep. And three different sleep modes automatically adjust the temperature to guarantee a good night's rest. With four different fan speeds for maximum comfort and whisper quiet operation, you won't even notice how hard Vireo is working to keep you comfortable.

ADVANCED FEATURES

- Highest Efficiency - G10 Inverter Technology
- 9,000 - 36,000 Btu Models
- Heat Pump Advantage
- Rugged Construction
- Whisper Quiet Operation
- Multi-Speed Fan
- Intelligent Defrost
- Gold Fin Condenser
- Low-Voltage Startup
- Time Guard
- Power Failure Mode
- Intelligent Pre-Heating
- Polymeric Air Filters
- Wireless Remote Controller or Optional Wired Tether Controller
- Timer Mode
- "I Feel" Mode
- Swing Louver Control
- Privacy Lock Mode

Compact and slim, the Vireo line is subtle in appearance, inconspicuously fitting into any living space. Indoors, it's sleek and sophisticated, while outdoors it's rugged and strong. The system's corrosion-resistant Gold Fin condenser coating not only maintains excellent heat transfer properties, it helps protect from harsh conditions, providing years of reliable service.

- Sleep Mode
- Quiet Mode
- Energy Saving Mode
- Fahrenheit/Celsius Display Settings
- Self-Diagnosis





- **HIGH EFFICIENCY, UP TO 23 SEER**
- **ELEGANT STYLING**
- **SUPERIOR AIRFLOW CONTROL**
- **QUIET OPERATION**
- **WIRELESS COMFORT CONTROL**



Temperature Sensing Remote Controller



Optional Wired Tether Controller

EARTH FRIENDLY & EFFICIENT
GREECOMFORT.COM
855.452.0005



NOTES

**DUCTLESS
SPLIT**

TERRA

NEO

RIO

U-MATCH

**MULTI
DUCTLESS
SPLIT**

+MULTI

SUPER +MULTI

**PACKAGED
TERMINAL (PTAC)**

E-TAC

**THROUGH-
THE-WALL
ROOM**

T2600

IN THE PIPELINE

MULTI21

CROWN

VIREO



**SPECIFICATIONS ARE SUBJECT TO CHANGE WITHOUT NOTICE. MANUFACTURER RESERVES THE RIGHT TO DISCONTINUE, OR CHANGE AT ANY TIME, SPECIFICATIONS OR DESIGNS WITHOUT NOTICE OR WITHOUT INCURRING OBLIGATIONS.
©2015. ALL RIGHTS RESERVED.**

**LIMITED WARRANTY COVERAGE FOR GREE DUCT-FREE UNITS IS FIVE (5) YEARS FOR PARTS, SEVEN (7) YEARS FOR COMPRESSOR.
LIMITED WARRANTY COVERAGE FOR GREE E-TAC AND T2600 UNITS IS FIVE (5) YEARS.
SEE COMPLETE PRODUCT WARRANTY STATEMENT FOR FULL DETAILS ON ALL LIMITED WARRANTY COVERAGE.**

**FOR MORE INFORMATION, VISIT GREECOMFORT.COM OR CALL
GREE CUSTOMER CARE LINE: 855.452.0005**

