

# VENTILATION PRODUCTS

# Table of Contents



## **ENERGY STAR® CERTIFIED EXHAUST FANS**

DC Motor Exhaust Fans	Page 3
ECO-Exhaust Fans	Page 4
ECO-Exhaust Fans with Light	Page 5
Variable Speed Fans	Page 6
Quiet Exhaust Fans	Page 7
Snap-In Exhaust Fans	Page 8

---

## **EXHAUST FANS WITH LIGHTS**

Exhaust Fans with Light	Page 9
Decorative Exhaust Fans with Light	Page 10

---

## **EXHAUST FANS**

Snap-In Exhaust Fans	Page 11
Economical Series Exhaust Fans	Page 11
Garage/Through the Wall Exhaust Fan	Page 11

---

## **HIGH VOLUME EXHAUST FANS**

High Volume Exhaust Fans	Page 12
--------------------------	---------

---

## **HEATERS**

Combination Heaters	Page 13
Bulb Heater with Exhaust Fan	Page 13

---

## **FIRE RATED EXHAUST FANS (UL263, UL555C)**

Fire Rated Exhaust Fans	Page 14
<b>ENERGY STAR Certified Fire Rated Exhaust Fans</b>	Page 15

---

Switches and Timers	Page 16
Accessories	Page 17
Specifications	Pages 18 - 19

# DC Motor Exhaust Fans



CALGreen



D4 Series



DL4 Series

- **ENERGY STAR® version 4.0 Certified**
- Energy efficient DC motor maintains CFM ratings across multiple static pressures and is suitable for continuous operation
- Solution for **ASHRAE 62.2** continuous whole house ventilation  
**Ventilation calculation:** (Total sq. ft. of home/100) + ((# of bedrooms+1) x 7.5 cfm)  
 For best fan selection round the min ventilation # up to the nearest 0 - ex. 45 CFM should be rounded up to 50 CFM
- Can be used to comply with California Title 24 as well as CALGreen (humidity sensing models meet the CALGreen requirements for use in bathrooms)
- 6" Round duct connector with gasketed damper protects against backdrafts and seals the duct better than any other damper on the market today
- Listed for installation over a tub or shower on a GFCI circuit
- Hanger bar installation
- Available in contractor packs (see your local representative for details)
- **DL SERIES: INCLUDED** 8 watt LED lamp with night light feature (4 watt max bulb not included)

MODEL	CFM RANGE @ .1 SP	SONES @ .1 SP	MAX. FAN WATTS	SPEEDS	LIGHTING	LISTING	DUCT SIZE	HOUSING SIZE
<b>ECO-EXHAUST FANS</b>								
D4S	40 - 120	<0.3	7.3	Single	N/A	ETL	6"	12 $\frac{1}{2}$ "W x 12 $\frac{3}{4}$ "D x 9 $\frac{7}{8}$ "H
D4D	40 - 120	<0.3	7.3	Dual	N/A	ETL	6"	12 $\frac{1}{2}$ "W x 12 $\frac{3}{4}$ "D x 9 $\frac{7}{8}$ "H
DL4S	30 - 120	<0.3	7.4	Single	8 W LED	ETL	6"	12 $\frac{1}{2}$ "W x 12 $\frac{3}{4}$ "D x 9 $\frac{7}{8}$ "H
DL4D	30 - 120	<0.3	7.4	Dual	8 W LED	ETL	6"	12 $\frac{1}{2}$ "W x 12 $\frac{3}{4}$ "D x 9 $\frac{7}{8}$ "H
<b>ECO-EXHAUST FANS with MOTION SENSOR</b>								
Integrated motion sensor detects occupancy of the room and turns the fan on (or to high speed for dual speed models) and keeps it running for the preset time after the room is vacated before automatically turning the fan off (or back to low speed). Timer can be set from 30 seconds to 80 minutes.								
D4SG	40 - 120	<0.3	7.3	Single	N/A	ETL	6"	12 $\frac{1}{2}$ "W x 12 $\frac{3}{4}$ "D x 9 $\frac{7}{8}$ "H
D4DG	40 - 120	<0.3	7.3	Dual	N/A	ETL	6"	12 $\frac{1}{2}$ "W x 12 $\frac{3}{4}$ "D x 9 $\frac{7}{8}$ "H
DL4SG	30 - 120	<0.3	7.4	Single	8 W LED	ETL	6"	12 $\frac{1}{2}$ "W x 12 $\frac{3}{4}$ "D x 9 $\frac{7}{8}$ "H
DL4DG	30 - 120	<0.3	7.4	Dual	8 W LED	ETL	6"	12 $\frac{1}{2}$ "W x 12 $\frac{3}{4}$ "D x 9 $\frac{7}{8}$ "H
<b>ECO-EXHAUST FANS with MOTION SENSOR and HUMIDITY SENSOR</b>								
Integrated motion sensor detects occupancy of the room and turns the fan to high speed and keeps it running for the preset time after the room is vacated before automatically turning the fan back to low speed. Timer can be set from 30 seconds to 80 minutes. Integrated humidistat senses the humidity level of the room and turns the fan to high speed until the humidity level is below the preset level. Can be set up to 80% RH. The fan can also be activated through a wall control switch.								
D4SGH	40 - 120	<0.3	7.3	Single	N/A	ETL	6"	12 $\frac{1}{2}$ "W x 12 $\frac{3}{4}$ "D x 9 $\frac{7}{8}$ "H
D4DGH	40 - 120	<0.3	7.3	Dual	N/A	ETL	6"	12 $\frac{1}{2}$ "W x 12 $\frac{3}{4}$ "D x 9 $\frac{7}{8}$ "H
DL4SGH	30 - 120	<0.3	7.4	Single	8 W LED	ETL	6"	12 $\frac{1}{2}$ "W x 12 $\frac{3}{4}$ "D x 9 $\frac{7}{8}$ "H
DL4DGH	30 - 120	<0.3	7.4	Dual	8 W LED	ETL	6"	12 $\frac{1}{2}$ "W x 12 $\frac{3}{4}$ "D x 9 $\frac{7}{8}$ "H
<b>ECO-EXHAUST FANS with HUMIDITY SENSOR</b>								
Integrated humidistat senses the humidity level of the room and turns the fan to high speed until the humidity level is below the preset level. Can be set up to 80% RH. The fan can also be activated through a wall control switch.								
D4SH	40 - 120	<0.3	7.3	Single	N/A	ETL	6"	12 $\frac{1}{2}$ "W x 12 $\frac{3}{4}$ "D x 9 $\frac{7}{8}$ "H
D4DH	40 - 120	<0.3	7.3	Dual	N/A	ETL	6"	12 $\frac{1}{2}$ "W x 12 $\frac{3}{4}$ "D x 9 $\frac{7}{8}$ "H
DL4SH	30 - 120	<0.3	7.4	Single	8 W LED	ETL	6"	12 $\frac{1}{2}$ "W x 12 $\frac{3}{4}$ "D x 9 $\frac{7}{8}$ "H
DL4DH	30 - 120	<0.3	7.4	Dual	8 W LED	ETL	6"	12 $\frac{1}{2}$ "W x 12 $\frac{3}{4}$ "D x 9 $\frac{7}{8}$ "H



# ECO-Exhaust Fans



E and EH Series



EG and EGH Series

- **ENERGY STAR® version 4.0 Certified**
- Solution for **ASHRAE 62.2** continuous whole house ventilation  
**Ventilation calculation:** (Total sq. ft. of home/100) + ((# of bedrooms+1) x 7.5 cfm)  
 For best fan selection round the min ventilation # up to the nearest 0 - ex. 45 CFM should be rounded up to 50 CFM
- Boost speed provides extra ventilation for installation with higher static pressure and ensures airflow requirements are met when used to comply with ASHRAE 62.2
- Can be used to comply with California Title 24 as well as CALGreen (humidity sensing models meet the CALGreen requirements for use in bathrooms)
- 6" Round duct connector with gasketed damper protects against backdrafts and seals the duct better than any other damper on the market today
- Listed for installation over a tub or shower on a GFCI circuit
- Hanger bar installation
- Available in contractor packs (see your local representative for details)

MODEL	CFM @ .1 SP	CFM @ .25 SP	SONES @ .1 SP	MAX. FAN WATTS	LIGHTING	LISTING	DUCT SIZE	HOUSING SIZE
<b>ECO-EXHAUST FANS</b>								
E80S	80	84 <sup>1</sup>	<0.3	37.0	N/A	ETL	6"	12 <sup>7</sup> / <sub>8</sub> "W x 12 <sup>3</sup> / <sub>4</sub> "D x 9 <sup>7</sup> / <sub>8</sub> "H
E80D	80/30	84 <sup>1</sup>	<0.3	37.0	N/A	ETL	6"	12 <sup>7</sup> / <sub>8</sub> "W x 12 <sup>3</sup> / <sub>4</sub> "D x 9 <sup>7</sup> / <sub>8</sub> "H
E110S	110	111 <sup>2</sup>	<0.3	37.0	N/A	ETL	6"	12 <sup>7</sup> / <sub>8</sub> "W x 12 <sup>3</sup> / <sub>4</sub> "D x 9 <sup>7</sup> / <sub>8</sub> "H
E110D	110/50	111 <sup>2</sup>	<0.3	37.0	N/A	ETL	6"	12 <sup>7</sup> / <sub>8</sub> "W x 12 <sup>3</sup> / <sub>4</sub> "D x 9 <sup>7</sup> / <sub>8</sub> "H
E130S	130	113 <sup>3</sup>	<0.3	37.0	N/A	ETL	6"	12 <sup>7</sup> / <sub>8</sub> "W x 12 <sup>3</sup> / <sub>4</sub> "D x 9 <sup>7</sup> / <sub>8</sub> "H
E130D	130/50	113 <sup>3</sup>	<0.3	37.0	N/A	ETL	6"	12 <sup>7</sup> / <sub>8</sub> "W x 12 <sup>3</sup> / <sub>4</sub> "D x 9 <sup>7</sup> / <sub>8</sub> "H
<b>ECO-EXHAUST FANS with MOTION SENSOR</b>								
Integrated motion sensor detects occupancy of the room and turns the fan on (or to high speed for dual speed models) and keeps it running for the preset time after the room is vacated before automatically turning the fan off (or back to low speed). Timer can be set from 30 seconds to 80 minutes.								
E80SG	80	84 <sup>1</sup>	<0.3	37.0	N/A	ETL	6"	12 <sup>7</sup> / <sub>8</sub> "W x 12 <sup>3</sup> / <sub>4</sub> "D x 9 <sup>7</sup> / <sub>8</sub> "H
E80DG	80/30	84 <sup>1</sup>	<0.3	37.0	N/A	ETL	6"	12 <sup>7</sup> / <sub>8</sub> "W x 12 <sup>3</sup> / <sub>4</sub> "D x 9 <sup>7</sup> / <sub>8</sub> "H
E130SG	130	113 <sup>3</sup>	<0.3	37.0	N/A	ETL	6"	12 <sup>7</sup> / <sub>8</sub> "W x 12 <sup>3</sup> / <sub>4</sub> "D x 9 <sup>7</sup> / <sub>8</sub> "H
E130DG	130/50	113 <sup>3</sup>	<0.3	37.0	N/A	ETL	6"	12 <sup>7</sup> / <sub>8</sub> "W x 12 <sup>3</sup> / <sub>4</sub> "D x 9 <sup>7</sup> / <sub>8</sub> "H
<b>ECO-EXHAUST FANS with MOTION SENSOR and HUMIDITY SENSOR</b>								
Integrated motion sensor detects occupancy of the room and turns the fan on (or to high speed for dual speed models) and keeps it running for the preset time after the room is vacated before automatically turning the fan off (or back to low speed). Timer can be set from 30 seconds to 80 minutes. Integrated humidistat senses the humidity level of the room and turns the fan on (or to high speed for dual speed models) until the humidity level is below the preset level. Can be set up to 80% RH. The fan can also be activated through a wall control switch.								
E80SGH	80	84 <sup>1</sup>	<0.3	37.0	N/A	ETL	6"	12 <sup>7</sup> / <sub>8</sub> "W x 12 <sup>3</sup> / <sub>4</sub> "D x 9 <sup>7</sup> / <sub>8</sub> "H
E80DGH	80/30	84 <sup>1</sup>	<0.3	37.0	N/A	ETL	6"	12 <sup>7</sup> / <sub>8</sub> "W x 12 <sup>3</sup> / <sub>4</sub> "D x 9 <sup>7</sup> / <sub>8</sub> "H
E130SGH	130	113 <sup>3</sup>	<0.3	37.0	N/A	ETL	6"	12 <sup>7</sup> / <sub>8</sub> "W x 12 <sup>3</sup> / <sub>4</sub> "D x 9 <sup>7</sup> / <sub>8</sub> "H
E130DGH	130/50	113 <sup>3</sup>	<0.3	37.0	N/A	ETL	6"	12 <sup>7</sup> / <sub>8</sub> "W x 12 <sup>3</sup> / <sub>4</sub> "D x 9 <sup>7</sup> / <sub>8</sub> "H
<b>ECO-EXHAUST FANS with HUMIDITY SENSOR</b>								
Integrated humidistat senses the humidity level of the room and turns the fan on (or to high speed for dual speed models) until the humidity level is below the preset level. Can be set up to 80% RH. The fan can also be activated through a wall control switch.								
E80SH	80	84 <sup>1</sup>	<0.3	37.0	N/A	ETL	6"	12 <sup>7</sup> / <sub>8</sub> "W x 12 <sup>3</sup> / <sub>4</sub> "D x 9 <sup>7</sup> / <sub>8</sub> "H
E80DH	80/30	84 <sup>1</sup>	<0.3	37.0	N/A	ETL	6"	12 <sup>7</sup> / <sub>8</sub> "W x 12 <sup>3</sup> / <sub>4</sub> "D x 9 <sup>7</sup> / <sub>8</sub> "H
E130SH	130	113 <sup>3</sup>	<0.3	37.0	N/A	ETL	6"	12 <sup>7</sup> / <sub>8</sub> "W x 12 <sup>3</sup> / <sub>4</sub> "D x 9 <sup>7</sup> / <sub>8</sub> "H
E130DH	130/50	113 <sup>3</sup>	<0.3	37.0	N/A	ETL	6"	12 <sup>7</sup> / <sub>8</sub> "W x 12 <sup>3</sup> / <sub>4</sub> "D x 9 <sup>7</sup> / <sub>8</sub> "H

<sup>1</sup> Boost speed provides 84 CFM @ .25 Static Pressure, 0.7 sones • <sup>2</sup> Boost speed provides 111 CFM @ .25 Static Pressure, 0.6 sones  
<sup>3</sup> Boost speed provides 113 CFM @ .25 Static Pressure, 0.7 sones



# ECO-Exhaust Fans with Light



CALGreen



EF and EFH Series



EFG and EFGH Series

- **ENERGY STAR® version 4.0 Certified**
- Solution for **ASHRAE 62.2** continuous whole house ventilation  
**Ventilation calculation:** (Total sq. ft. of home/100) + ((# of bedrooms+1) x 7.5 cfm)  
 For best fan selection round the min ventilation # up to the nearest 0 - ex. 45 CFM should be rounded up to 50 CFM
- Boost speed provides extra ventilation for installation with higher static pressure and ensures airflow requirements are met when used to comply with ASHRAE 62.2
- Can be used to comply with California Title 24 as well as CALGreen (humidity sensing models meet the CALGreen requirements for use in bathrooms)
- **INCLUDED** 26 watt high efficacy fluorescent lamp
- Night light feature (4 watt maximum bulb not included)
- 6" Round duct connector with gasketed damper protects against backdrafts and seals the duct better than any other damper on the market today
- Listed for installation over a tub or shower on a GFCI circuit
- Hanger bar installation
- Available in contractor packs (see your local representative for details)

MODEL	CFM @ .1 SP	CFM @ .25 SP	SONES @ .1 SP	MAX. FAN WATTS	LIGHTING	LISTING	DUCT SIZE	HOUSING SIZE
<b>ECO-EXHAUST FANS with LIGHT</b>								
EF80S	80	82 <sup>1</sup>	<0.3 <sup>1</sup>	37.0	26 W CFL	ETL	6"	12 <sup>7</sup> / <sub>8</sub> "W x 12 <sup>3</sup> / <sub>4</sub> "D x 9 <sup>7</sup> / <sub>8</sub> "H
EF80D	80/30	82 <sup>1</sup>	<0.3 <sup>1</sup>	37.0	26 W CFL	ETL	6"	12 <sup>7</sup> / <sub>8</sub> "W x 12 <sup>3</sup> / <sub>4</sub> "D x 9 <sup>7</sup> / <sub>8</sub> "H
EF130S	130	112 <sup>4</sup>	<0.3 <sup>4</sup>	37.0	26 W CFL	ETL	6"	12 <sup>7</sup> / <sub>8</sub> "W x 12 <sup>3</sup> / <sub>4</sub> "D x 9 <sup>7</sup> / <sub>8</sub> "H
EF130D	130/50	112 <sup>4</sup>	<0.3 <sup>4</sup>	37.0	26 W CFL	ETL	6"	12 <sup>7</sup> / <sub>8</sub> "W x 12 <sup>3</sup> / <sub>4</sub> "D x 9 <sup>7</sup> / <sub>8</sub> "H
<b>ECO-EXHAUST FANS with MOTION SENSOR and LIGHT</b>								
Integrated motion sensor detects occupancy of the room and turns the fan on (or to high speed for dual speed models) and keeps it running for the preset time after the room is vacated before automatically turning the fan off (or back to low speed). Timer can be set from 30 seconds to 80 minutes.								
EF80SG	80	82 <sup>1</sup>	<0.3 <sup>1</sup>	37.0	26 W CFL	ETL	6"	12 <sup>7</sup> / <sub>8</sub> "W x 12 <sup>3</sup> / <sub>4</sub> "D x 9 <sup>7</sup> / <sub>8</sub> "H
EF80DG	80/30	82 <sup>1</sup>	<0.3 <sup>1</sup>	37.0	26 W CFL	ETL	6"	12 <sup>7</sup> / <sub>8</sub> "W x 12 <sup>3</sup> / <sub>4</sub> "D x 9 <sup>7</sup> / <sub>8</sub> "H
EF130SG	130	112 <sup>4</sup>	<0.3 <sup>4</sup>	37.0	26 W CFL	ETL	6"	12 <sup>7</sup> / <sub>8</sub> "W x 12 <sup>3</sup> / <sub>4</sub> "D x 9 <sup>7</sup> / <sub>8</sub> "H
EF130DG	130/50	112 <sup>4</sup>	<0.3 <sup>4</sup>	37.0	26 W CFL	ETL	6"	12 <sup>7</sup> / <sub>8</sub> "W x 12 <sup>3</sup> / <sub>4</sub> "D x 9 <sup>7</sup> / <sub>8</sub> "H
<b>ECO-EXHAUST FANS with MOTION SENSOR, HUMIDITY SENSOR and LIGHT</b>								
Integrated motion sensor detects occupancy of the room and turns the fan on (or to high speed for dual speed models) and keeps it running for the preset time after the room is vacated before automatically turning the fan off (or back to low speed). Timer can be set from 30 seconds to 80 minutes. Integrated humidistat senses the humidity level of the room and turns the fan on (or to high speed for dual speed models) until the humidity level is below the preset level. The fan can also be activated through a wall control switch.								
EF80SGH	80	82 <sup>1</sup>	<0.3 <sup>1</sup>	37.0	26 W CFL	ETL	6"	12 <sup>7</sup> / <sub>8</sub> "W x 12 <sup>3</sup> / <sub>4</sub> "D x 9 <sup>7</sup> / <sub>8</sub> "H
EF80DGH	80/30	82 <sup>1</sup>	<0.3 <sup>1</sup>	37.0	26 W CFL	ETL	6"	12 <sup>7</sup> / <sub>8</sub> "W x 12 <sup>3</sup> / <sub>4</sub> "D x 9 <sup>7</sup> / <sub>8</sub> "H
EF130SGH	130	112 <sup>4</sup>	<0.3 <sup>4</sup>	37.0	26 W CFL	ETL	6"	12 <sup>7</sup> / <sub>8</sub> "W x 12 <sup>3</sup> / <sub>4</sub> "D x 9 <sup>7</sup> / <sub>8</sub> "H
EF130DGH	130/50	112 <sup>4</sup>	<0.3 <sup>4</sup>	37.0	26 W CFL	ETL	6"	12 <sup>7</sup> / <sub>8</sub> "W x 12 <sup>3</sup> / <sub>4</sub> "D x 9 <sup>7</sup> / <sub>8</sub> "H
<b>ECO-EXHAUST FANS with HUMIDITY SENSOR and LIGHT</b>								
Integrated humidistat senses the humidity level of the room and turns the fan on (or to high speed for dual speed models) until the humidity level is below the preset level. Can be set up to 80% RH. The fan can also be activated through a wall control switch.								
EF80SH	80	82 <sup>1</sup>	<0.3 <sup>1</sup>	37.0	26 W CFL	ETL	6"	12 <sup>7</sup> / <sub>8</sub> "W x 12 <sup>3</sup> / <sub>4</sub> "D x 9 <sup>7</sup> / <sub>8</sub> "H
EF80DH	80/30	82 <sup>1</sup>	<0.3 <sup>1</sup>	37.0	26 W CFL	ETL	6"	12 <sup>7</sup> / <sub>8</sub> "W x 12 <sup>3</sup> / <sub>4</sub> "D x 9 <sup>7</sup> / <sub>8</sub> "H
EF130SH	130	112 <sup>4</sup>	<0.3 <sup>4</sup>	37.0	26 W CFL	ETL	6"	12 <sup>7</sup> / <sub>8</sub> "W x 12 <sup>3</sup> / <sub>4</sub> "D x 9 <sup>7</sup> / <sub>8</sub> "H
EF130DH	130/50	112 <sup>4</sup>	<0.3 <sup>4</sup>	37.0	26 W CFL	ETL	6"	12 <sup>7</sup> / <sub>8</sub> "W x 12 <sup>3</sup> / <sub>4</sub> "D x 9 <sup>7</sup> / <sub>8</sub> "H

<sup>1</sup> Boost speed provides 84 CFM @ .25 Static Pressure, 0.7 sones • <sup>4</sup> Boost speed provides 112 CFM @ .25 Static Pressure, 0.7 sones



# Variable Speed Exhaust Fans



EVD and EVDH



EVFD and EVFDH



- **ENERGY STAR® version 4.0 Certified**

- Solution for **ASHRAE 62.2** continuous whole house ventilation

**Ventilation calculation:** (Total sq. ft. of home/100) + ((# of bedrooms+1) x 7.5 cfm)

For best fan selection round the min ventilation # up to the nearest 0 - ex. 45 CFM should be rounded up to 50 CFM

- Can be used to comply with California Title 24 as well as CALGreen (humidity sensing models meet the CALGreen requirements for use in bathrooms)
- 8 capacity settings on low speed allow the fan to be set to the required exhaust rate for continuous ventilation. Low speed set points include: 30, 40, 50, 60, 70, 90, 100 and 120 CFM
- High speed rapidly clears the air of moisture, odors or other contaminants. High speed set points include: 80, 110, 130 and Boost
- Boost speed provides extra ventilation for installation with higher static pressure and ensures airflow requirements are met when used to comply with ASHRAE 62.2
- 6" Round duct connector with gasketed damper protects against backdrafts and seals the duct better than any other damper on the market today
- Listed for installation over a tub or shower on a GFCI circuit
- Hanger bar installation
- Available in contractor packs (see your local representative for details)
- **EVF SERIES: INCLUDED** 26 watt high efficacy fluorescent lamp with night light feature (4 watt maximum bulb not included)

MODEL	CFM RANGE @ .1 SP	BOOST SPEED	SONES @ .1 SP	MAX. FAN WATTS	LIGHTING	LISTING	DUCT SIZE	HOUSING SIZE
<b>ECO-EXHAUST FANS</b>								
EVD	30 - 150	150 @ 0.6 Sones <sup>3</sup>	<0.3 <sup>3</sup>	37.0	N/A	ETL	6"	12 <sup>1</sup> / <sub>8</sub> "W x 12 <sup>3</sup> / <sub>4</sub> "D x 9 <sup>7</sup> / <sub>8</sub> "H
EVFD	30 - 150	150 @ 0.6 Sones <sup>4</sup>	<0.3 <sup>4</sup>	37.0	26 W CFL	ETL	6"	12 <sup>1</sup> / <sub>8</sub> "W x 12 <sup>3</sup> / <sub>4</sub> "D x 9 <sup>7</sup> / <sub>8</sub> "H
<b>ECO-EXHAUST FANS with MOTION SENSOR</b>								
Integrated motion sensor detects occupancy of the room and turns the fan to high speed and keeps it running for the preset time after the room is vacated before automatically turning the fan back to low speed. Timer can be set from 30 seconds to 80 minutes.								
EVDG	30 - 150	150 @ 0.6 Sones <sup>3</sup>	<0.3 <sup>3</sup>	37.0	N/A	ETL	6"	12 <sup>1</sup> / <sub>8</sub> "W x 12 <sup>3</sup> / <sub>4</sub> "D x 9 <sup>7</sup> / <sub>8</sub> "H
EVFDG	30 - 150	150 @ 0.6 Sones <sup>4</sup>	<0.3 <sup>4</sup>	37.0	26 W CFL	ETL	6"	12 <sup>1</sup> / <sub>8</sub> "W x 12 <sup>3</sup> / <sub>4</sub> "D x 9 <sup>7</sup> / <sub>8</sub> "H
<b>ECO-EXHAUST FANS with MOTION SENSOR and HUMIDITY SENSOR</b>								
Integrated motion sensor detects occupancy of the room and turns the fan to high speed and keeps it running for the preset time after the room is vacated before automatically turning the fan back to low speed. Timer can be set from 30 seconds to 80 minutes. Integrated humidistat senses the humidity level of the room and turns the fan to high speed until the humidity level is below the preset level. Can be set up to 80% RH. The fan can also be activated through a wall control switch.								
EVDGH	30 - 150	150 @ 0.6 Sones <sup>3</sup>	<0.3 <sup>3</sup>	37.0	N/A	ETL	6"	12 <sup>1</sup> / <sub>8</sub> "W x 12 <sup>3</sup> / <sub>4</sub> "D x 9 <sup>7</sup> / <sub>8</sub> "H
EVFDGH	30 - 150	150 @ 0.6 Sones <sup>4</sup>	<0.3 <sup>4</sup>	37.0	26 W CFL	ETL	6"	12 <sup>1</sup> / <sub>8</sub> "W x 12 <sup>3</sup> / <sub>4</sub> "D x 9 <sup>7</sup> / <sub>8</sub> "H
<b>ECO-EXHAUST FANS with HUMIDITY SENSOR</b>								
Integrated humidistat senses the humidity level of the room and turns the fan to high speed until the humidity level is below the preset level. Can be set up to 80% RH. The fan can also be activated through a wall control switch.								
EVDH	30 - 150	150 @ 0.6 Sones <sup>3</sup>	<0.3 <sup>3</sup>	37.0	N/A	ETL	6"	12 <sup>1</sup> / <sub>8</sub> "W x 12 <sup>3</sup> / <sub>4</sub> "D x 9 <sup>7</sup> / <sub>8</sub> "H
EVFDH	30 - 150	150 @ 0.6 Sones <sup>4</sup>	<0.3 <sup>4</sup>	37.0	26 W CFL	ETL	6"	12 <sup>1</sup> / <sub>8</sub> "W x 12 <sup>3</sup> / <sub>4</sub> "D x 9 <sup>7</sup> / <sub>8</sub> "H

<sup>3</sup> Boost speed provides 113 CFM @ .25 Static Pressure, 0.6 sones • <sup>4</sup> Boost speed provides 112 CFM @ .25 Static Pressure, 0.7 sones



# Quiet Exhaust Fans



CALGreen



AK150LS, AK200LS, AK280LS



AKF and AKFH Series  
NEW LEDAK SERIES!



AKLS6 and AKLS6H Series



AK and AKH Series



- **ENERGY STAR® version 4.0 Certified**
- Solutions for **ASHRAE 62.2** continuous whole house ventilation or local ventilation (models with a sone rating of 1.0 or below can be used for whole house ventilation)
- Can be used to comply with California Title 24 as well as CALGreen (humidity sensing models meet the CALGreen requirements for use in bathrooms)
- Round duct connector with damper protects against backdrafts
- Listed for installation over a tub or shower on a GFCI circuit
- Hanger bar installation
- Available in contractor packs (see page 17 for details)
- **AKF SERIES:** Moonstone glass light lens with **INCLUDED** 26 watt high efficacy GU24 base fluorescent lamp, 4 Watt night light feature (night light bulb not included)
- **LEDAK SERIES:** Moonstone glass light lens with **INCLUDED** 6 watt GU24 base LED lamp, night light option operates at 20% of the main light.

MODEL	CFM @ .1 SP	CFM @ .25 SP	SONES @ .1 SP	MAX. FAN WATTS	LIGHTING	LISTING	DUCT SIZE	HOUSING SIZE
<b>QUIET EXHAUST FANS</b>								
AK80LS6	80	57	0.5	25.2	N/A	UL	6"	10 $\frac{1}{8}$ "W x 9 $\frac{3}{8}$ "D x 7 $\frac{7}{8}$ "H
AK90LS6	90	65	0.8	25.7	N/A	UL	6"	10 $\frac{1}{8}$ "W x 9 $\frac{3}{8}$ "D x 7 $\frac{7}{8}$ "H
AK100LS6	100	78	1.0	26.6	N/A	UL	6"	10 $\frac{1}{8}$ "W x 9 $\frac{3}{8}$ "D x 7 $\frac{7}{8}$ "H
AK110LS6	110	99	1.4	29.0	N/A	UL	6"	10 $\frac{1}{8}$ "W x 9 $\frac{3}{8}$ "D x 7 $\frac{7}{8}$ "H
AK150LS	150	116	0.8	37.0	N/A	ETL	6"	12 $\frac{1}{8}$ "W x 12 $\frac{3}{4}$ "D x 9 $\frac{1}{8}$ "H
AK200LS	200	183	1.2	57.0	N/A	UL	6"	12 $\frac{1}{8}$ "W x 12 $\frac{3}{4}$ "D x 9 $\frac{1}{8}$ "H
AK280LS	280	257	3.0	65.7	N/A	UL	6"	12 $\frac{1}{8}$ "W x 12 $\frac{3}{4}$ "D x 9 $\frac{1}{8}$ "H
AK80LS-1	80	68	1.0	28.1	N/A	UL	4"	10 $\frac{1}{8}$ "W x 9 $\frac{3}{8}$ "D x 7 $\frac{7}{8}$ "H
AK50S	50	40	0.5	14.5	N/A	UL	4"	10 $\frac{1}{8}$ "W x 9 $\frac{3}{8}$ "D x 7 $\frac{7}{8}$ "H
AKF50	50	35	0.3	16.0	26 W CFL	UL	4"	10 $\frac{1}{8}$ "W x 9 $\frac{3}{8}$ "D x 7 $\frac{7}{8}$ "H
AK80	80	63	1.5	27.6	N/A	UL	4"	10 $\frac{1}{8}$ "W x 9 $\frac{3}{8}$ "D x 7 $\frac{7}{8}$ "H
AKF80LS	80	70	1.0	27.6	26 W CFL	UL	4"	10 $\frac{1}{8}$ "W x 9 $\frac{3}{8}$ "D x 7 $\frac{7}{8}$ "H
LEDAK80	80	70	1.0	27.6	6 W LED	UL	4"	10 $\frac{1}{8}$ "W x 9 $\frac{3}{8}$ "D x 7 $\frac{7}{8}$ "H
AK90	90	75	1.5	25.4	N/A	UL	4"	10 $\frac{1}{8}$ "W x 9 $\frac{3}{8}$ "D x 7 $\frac{7}{8}$ "H
AK110PN	100	83	2.0	26.4	N/A	UL	4"	10 $\frac{1}{8}$ "W x 9 $\frac{3}{8}$ "D x 7 $\frac{7}{8}$ "H
AK100D	100 / 50	83	2.0 / 0.4	26.4	N/A	UL	4"	10 $\frac{1}{8}$ "W x 9 $\frac{3}{8}$ "D x 7 $\frac{7}{8}$ "H
AKF100	100	83	2.0	26.5	26 W CFL	UL	4"	10 $\frac{1}{8}$ "W x 9 $\frac{3}{8}$ "D x 7 $\frac{7}{8}$ "H
LEDAK100	100	83	2.0	26.5	6 W LED	UL	4"	10 $\frac{1}{8}$ "W x 9 $\frac{3}{8}$ "D x 7 $\frac{7}{8}$ "H
AKF100D4	100 / 50	83	2.0 / 0.4	26.5	26 W CFL	UL	4"	10 $\frac{1}{8}$ "W x 9 $\frac{3}{8}$ "D x 7 $\frac{7}{8}$ "H
LEDAK100D	100 / 50	83	2.0 / 0.4	26.5	6 W LED	UL	4"	10 $\frac{1}{8}$ "W x 9 $\frac{3}{8}$ "D x 7 $\frac{7}{8}$ "H
<b>QUIET EXHAUST FANS with HUMIDITY SENSOR</b>								
Integrated humidistat senses the humidity level of the room and turns the fan on (or to high speed for dual speed models) until the humidity level is below the preset level. Can be set up to 80% RH. The fan can also be activated through a wall control switch.								
AK80H	80	68	1.0	28.1	N/A	UL	4"	10 $\frac{1}{8}$ "W x 9 $\frac{3}{8}$ "D x 7 $\frac{7}{8}$ "H
AKF80H	80	70	1.0	27.6	26 W CFL	UL	4"	10 $\frac{1}{8}$ "W x 9 $\frac{3}{8}$ "D x 7 $\frac{7}{8}$ "H
LEDAK80H	80	70	1.0	27.6	6 W LED	UL	4"	10 $\frac{1}{8}$ "W x 9 $\frac{3}{8}$ "D x 7 $\frac{7}{8}$ "H
AK100H	100	83	2.0	26.4	N/A	UL	4"	10 $\frac{1}{8}$ "W x 9 $\frac{3}{8}$ "D x 7 $\frac{7}{8}$ "H
AKF100H	100	83	2.0	26.5	26 W CFL	UL	4"	10 $\frac{1}{8}$ "W x 9 $\frac{3}{8}$ "D x 7 $\frac{7}{8}$ "H
LEDAK100H	100	83	2.0	26.5	6 W LED	UL	4"	10 $\frac{1}{8}$ "W x 9 $\frac{3}{8}$ "D x 7 $\frac{7}{8}$ "H
AK80LS6H	80	57	0.5	25.2	N/A	UL	6"	10 $\frac{1}{8}$ "W x 9 $\frac{3}{8}$ "D x 7 $\frac{7}{8}$ "H
AK100LS6H	100	78	1.0	26.6	N/A	UL	6"	10 $\frac{1}{8}$ "W x 9 $\frac{3}{8}$ "D x 7 $\frac{7}{8}$ "H

# SNAP-IN Exhaust Fans



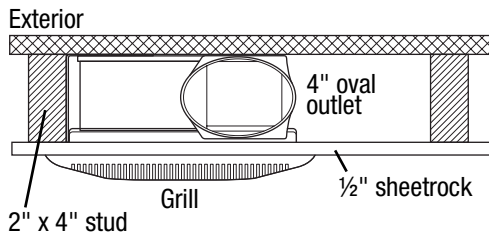
BFQ Series



BFQF Series



BFQW Series



- **ENERGY STAR® version 4.0 Certified**
- Solutions for **ASHRAE 62.2** continuous whole house ventilation or local ventilation (models with a sone rating of 1.0 or below can be used for whole house ventilation)
- Can be used to comply with California Title 24 as well as CALGreen
- 4" Round duct connector with damper protects against backdrafts
- UL Listed high-impact plastic housing will not rust or corrode over time and is listed for installation over a tub or shower on a GFCI circuit
- Installs using the included SNAP-IN mounting system with wire nuts and a romex connector included and can be wall mounted in 2" x 6" construction
- Available in contractor packs (see page 17 for details)
- See page 11 for additional higher volume models
- **BFQF SERIES: INCLUDED** 26 watt high efficacy GU24 base fluorescent lamp

**BFQW SERIES** can be wall mounted into standard 2" x 4" studs.



## SNAP-IN INSTALLATION



**NAIL** the included bracket in place.  
**SNAP** the naturally sound absorbent molded plastic housing into the bracket.  
**WIRE** the fan with the included wire nuts and strain relief. Attach the ducting and **YOU'RE DONE!**



MODEL	CFM @ .1 SP	CFM @ .25 SP	SONES @ .1 SP	MAX. FAN WATTS	LIGHTING	LISTING	DUCT SIZE	HOUSING SIZE
<b>SNAP-IN EXHAUST FAN</b>								
BFQ50	50	36	0.6	17.4	N/A	UL	4"	9½"W x 8½"D x 4¾"H
BFQF50	50	44	0.8	17.8	26 W CFL	UL	4"	9½"W x 8½"D x 4¾"H
BFQ75	70	55	1.5	23.5	N/A	UL	4"	9½"W x 8½"D x 4¾"H
BFQF70	70	58	2.0	22.6	26 W CFL	UL	4"	9½"W x 8½"D x 4¾"H
<b>SNAP-IN EXHAUST FAN with OVAL DUCT CONNECTION</b>								
Can be wall mounted into standard 2" x 4" studs. Standard 4" round ducting can be formed to fit over oval duct connector.								
BFQ50W	50	44	0.8	16.5	N/A	UL	4"	9½"W x 8½"D x 3¾"H
BFQ70W	70	56	1.5	22.3	N/A	UL	4"	9½"W x 8½"D x 3¾"H



# Exhaust Fans with Light



AK100L

## Deluxe Series with Light (AK100L)

- Moonstone glass light lens disperses the light evenly throughout the room
- Utilizes a 26W medium base energy efficient fluorescent lamp\* (up to a 100W type A19 incandescent bulb can also be used), 7 watt night-light feature
- Plastic damper protects against backdrafts and ensures quiet operation
- Easily installs using the included adjustable hanging brackets

## Deluxe Round Series with Light (AK863L, AK864L)

- Moonstone glass light lens disperses the light evenly throughout the room
- Utilizes a 26W medium base energy efficient fluorescent lamp\* (up to a 100W type A19 incandescent bulb can also be used), 7 watt night-light feature (AK863L ONLY)
- Round grill makes unit easier to visually center within room
- Plastic damper protects against backdrafts and ensures quiet operation
- Easily installs using the included adjustable hanging brackets



AK863L, AK864L

## Economical Series with Light (ASLC)

- Utilizes a 26W medium base energy efficient fluorescent lamp\* (up to a 100W type A19 incandescent bulb can also be used)
- Plastic damper protects against backdrafts and ensures quiet operation
- Easily installs using the double thick keyhole mounting tabs or the included hanging brackets
- Available in contractor packs



ASLC Series

MODEL	CFM @ .1 SP	SONES @ .1 SP	ASHRAE 62.2	LIGHTING*	LISTING	DUCT SIZE	HOUSING SIZE
<b>DELUXE EXHAUST FAN with LIGHT (AK100L)</b>							
AK100L	100	2.5	Local	A19 or Medium Base CFL, 7W night light	UL	4"	9 $\frac{3}{8}$ "W x 10 $\frac{1}{4}$ "D x 7 $\frac{1}{8}$ "H
<b>DELUXE ROUND EXHAUST FAN with LIGHT (AK863L, AK864L)</b>							
AK863L	100	3.5	-	A19 or Medium Base CFL, 7W night light	UL	4"	9 $\frac{1}{8}$ "W x 9 $\frac{1}{4}$ "D x 5 $\frac{7}{8}$ "H
AK864L	100	3.5	-	A19 or Medium Base CFL	UL	4"	9 $\frac{1}{8}$ "W x 9 $\frac{1}{4}$ "D x 5 $\frac{7}{8}$ "H
<b>ECONOMICAL EXHAUST FAN with LIGHT (AS Series)</b>							
ASLC50	50	3.0	Local	A19 or Medium Base CFL	UL	4"	7 $\frac{3}{8}$ "W x 7 $\frac{1}{2}$ "D x 5 $\frac{7}{8}$ "H
ASLC70	70	4.0	-	A19 or Medium Base CFL	UL	4"	7 $\frac{3}{8}$ "W x 7 $\frac{1}{2}$ "D x 5 $\frac{7}{8}$ "H
ASLC90	90	2.5	Local	A19 or Medium Base CFL	UL	4"	9 $\frac{1}{8}$ "W x 9"D x 5 $\frac{7}{8}$ "H
ASLC120	120	4.0	-	A19 or Medium Base CFL	UL	4"	9 $\frac{1}{8}$ "W x 9"D x 5 $\frac{7}{8}$ "H
<b>ECONOMICAL SERIES with LIGHT CONTRACTOR PACKS</b>							
HOUSING MODEL	HOUSING TYPE	DUCT TYPE	MOTOR/BLADE/GRILL MODELS		#PER PACK		
ASLCHSG	Standard	4" plastic	ASLC50MBG (50 CFM / 3.0 Sones) ASLC70MBG (70 CFM / 4.0 Sones)		4		

\* Bulbs not included



# Decorative Exhaust Fans with Light



Model AKLC701



Model AKLC702



Model AKLC703



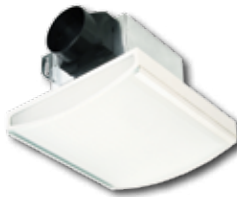
Model DRLC701



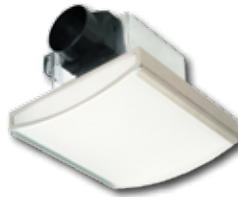
Model DRLC702



Model DRLC703



Model AKLC70SLW



Model AKLC70SLN



Model AKLC70DW



Model AKLC70DRSB



Model AKLC70RCB



Model AKLC70SNS

- Decorative grills and light lenses enhance the decor of your bathroom
- Glass light lens disperses light throughout the room (model AKLC70RCB features a plastic light lens)
- 4" round duct collar with plastic damper protects against backdrafts and ensures quiet operation
- Exhaust fan and lighting can be wired to operate separately
- Easily installs using the included adjustable hanging brackets

### Models AKLC701, AKLC702, AKLC703, DRLC701, DRLC702, DRLC703:

1 1/2" diameter round grill makes unit easier to visually center within the room

Utilizes 2 - 26W medium base energy efficient fluorescent lamps\* (60W type A19 incandescent bulbs can also be used)

### Models AKLC70SLN, AKLC70SLW:

Utilizes 2 - 26W medium base energy efficient fluorescent lamps\* (60W type A15 incandescent bulbs can also be used)

### Models AKLC70DW, AKLC70SNS:

Utilizes 2 - 26W medium base energy efficient fluorescent lamps\* (60W type A19 incandescent bulbs can also be used)

### Models AKLC70RCB:

Utilizes 1 - 18W medium base energy efficient fluorescent lamp\* (60W type A19 incandescent bulb can also be used)

### Models AKLC70DRSB:

Utilizes 3 - 26W medium base energy efficient fluorescent lamps\* (60W type A15 incandescent bulbs can also be used)

MODEL	FINISH	CFM @ .1 SP	SONES @ .1 SP	ASHRAE 62.2	LIGHTING*	LISTING	DUCT SIZE	HOUSING SIZE
<b>DECORATIVE QUIET ROUND EXHAUST FANS with LIGHT</b>								
AKLC701	Oil Rubbed Bronze	70	2.5	Local	2 - 26W Fluorescent or 2 - 60W	UL	4"	7 3/8"W x 7 7/8"D x 5 7/8"H
AKLC702	Nickel	70	2.5	Local	2 - 26W Fluorescent or 2 - 60W	UL	4"	7 3/8"W x 7 7/8"D x 5 7/8"H
AKLC703	White	70	2.5	Local	2 - 26W Fluorescent or 2 - 60W	UL	4"	7 3/8"W x 7 7/8"D x 5 7/8"H
<b>DECORATIVE QUIET EXHAUST FANS with LIGHT</b>								
AKLC70SLN	Nickel	70	2.5	Local	2 - 26W Fluorescent or 2 - 60W	UL	4"	7 3/8"W x 7 7/8"D x 5 7/8"H
AKLC70SLW	White	70	2.5	Local	2 - 26W Fluorescent or 2 - 60W	UL	4"	7 3/8"W x 7 7/8"D x 5 7/8"H
AKLC70DW	White	70	2.5	Local	2 - 26W Fluorescent or 2 - 60W	UL	4"	7 3/8"W x 7 7/8"D x 5 7/8"H
AKLC70RCB	Chrome	70	2.5	Local	18W Fluorescent or 60W	UL	4"	7 3/8"W x 7 7/8"D x 5 7/8"H
AKLC70DRSB	Black	70	2.5	Local	2 - 26W Fluorescent or 2 - 60W	UL	4"	7 3/8"W x 7 7/8"D x 5 7/8"H
AKLC70SNS	Nickel	70	2.5	Local	2 - 26W Fluorescent or 2 - 60W	UL	4"	7 3/8"W x 7 7/8"D x 5 7/8"H
<b>DECORATIVE ROUND EXHAUST FANS with LIGHT</b>								
DRLC701	Oil Rubbed Bronze	70	4.0	-	2 - 26W Fluorescent or 2 - 60W	UL	4"	7 3/8"W x 7 7/8"D x 5 7/8"H
DRLC702	Nickel	70	4.0	-	2 - 26W Fluorescent or 2 - 60W	UL	4"	7 3/8"W x 7 7/8"D x 5 7/8"H
DRLC703	White	70	4.0	-	2 - 26W Fluorescent or 2 - 60W	UL	4"	7 3/8"W x 7 7/8"D x 5 7/8"H

\* Bulbs not included





## SNAP-IN Series (BFQ)

- 4" Round duct connector with damper protects against backdrafts
- UL Listed high impact plastic housing will not rust or corrode over time and is listed for installation over a tub or shower on a GFCI circuit
- Installs using the included SNAP-IN mounting system with wire nuts and a romex connector included and can be wall mounted in 2" x 6" construction
- Available in contractor packs (see page 17 for details)

BFQ Series



## Economical Series (AS)

- Plastic damper protects against backdrafts and ensures quiet operation
- Easily installs using the double thick keyhole mounting tabs
- Available in contractor packs (see page 17 for details)

AS54



AS Series

## Garage/Through the Wall Exhaust Fan (EWF-180)

- Spring loaded aluminum back draft damper prevents backdrafts
- 8" round diameter housing for maximum air flow can be installed into walls 4" to 9" thick
- Direct to outdoors exhaust design eliminates the need for ducting



EWF-180

MODEL	CFM @ .1 SP	SONES @ .1 SP	ASHRAE 62.2	LIGHTING	LISTING	DUCT SIZE	HOUSING SIZE
<b>SNAP-IN EXHAUST FAN (BFQ Series)</b>							
BFQ80	80	2.0	Local	N/A	UL	4"	9½"W x 8½"D x 4¾"H
BFQ90	90	2.5	Local	N/A	UL	4"	9½"W x 8½"D x 4¾"H
BFQ110	100	3.5	-	N/A	UL	4"	9½"W x 8½"D x 4¾"H
BFQ140	120	4.0	-	N/A	UL	4"	9½"W x 8½"D x 4¾"H
<b>ECONOMICAL EXHAUST FAN (AS Series)</b>							
AS54	50	3.0	Local	N/A	UL	4"	7¼"W x 7¼"D x 4¾"H
AS50	50	3.0	-	N/A	UL	3"	7¼"W x 7¼"D x 3¾"H
AS70	70	4.0	-	N/A	UL	3"	7¼"W x 7¼"D x 3¾"H
<b>GARAGE/WALL EXHAUST FAN (EWF-180)</b>							
EWF-180	180	6.5	-	N/A	UL	8"	14¼"W x 4½"-9½"D x 14¼"H



# High Volume Exhaust Fans



AK Series



## High Volume Series

- 4½" x 18½" duct connector with 2 aluminum backdraft dampers
- Painted white, metal grill
- Insulated housing with motors & blowers mounted on vibration isolators
- 24" on center joists mounting using the supplied mounting angles or hung for suspended ceilings using 1/4-20 support rod
- Can be adapted for top discharge mounting, straight through inline or right angle inline (hardware not provided)
- Uses forward curved non overloading polymeric blower wheels
- Wiring access from top or side
- Easy service access through large removable access panel or through the grill



Air King model OA10V transitions the 4½" x 18½" duct collar to 10" round (available separately)



MODEL	CFM @ .1 SP	SONES @ .1 SP	ASHRAE 62.2	GRILL	LISTING	DUCT SIZE	HOUSING SIZE
<b>HIGH VOLUME EXHAUST FAN</b>							
AK400	420	1.5	Local	Metal	ETL	4½" x 18½"	21½"W x 12¾"D x 12¾"H
AK500	520	2.5	Local	Metal	ETL	4½" x 18½"	21½"W x 12¾"D x 12¾"H
AK600	620	3.5	-	Metal	ETL	4½" x 18½"	21½"W x 12¾"D x 12¾"H



AK927

AK55L, AK965L,  
AK964

AK917



### Ceramic Heater Element

The ceramic heating element produces heat by passing current through a self regulating ceramic heating element. The element adjusts itself to the surface temperature, regulating it to produce a constant heat. As air is passed through the element, it will adjust to maintain the temperature.

## COMBINATION CERAMIC HEATERS (HEAT/LIGHT/VENT)

- Self-regulating ceramic heating element provides 1,350 watts of safe ceramic warmth
- Able to be installed on a 15 amp circuit
- Utilizes a 26W medium base energy efficient fluorescent lamp  
(up to a 100W type A19 incandescent bulb can also be used)

## DELUXE COMBINATION HEATERS (HEAT/LIGHT/NIGHT LIGHT/VENT)

- Control switches are included with the unit
- Utilizes a 26W medium base energy efficient fluorescent lamp  
(up to a 100W type A19 incandescent bulb can also be used)
- Easily installs using the included adjustable hanging brackets.

## COMBINATION HEATERS (HEAT/LIGHT/VENT)

- Utilizes a 26W medium base energy efficient fluorescent lamp  
(up to a 100W type A19 incandescent bulb can also be used)
- Easily installs using the included adjustable hanging brackets.

## BULB HEATERS with EXHAUST FAN

- Rated type IC for ceiling insulated to R-40
- Utilizes 250 watt maximum type R40 medium base infrared lamp (lamp not included)
- Easily installs using the included adjustable hanging brackets.

MODEL	CFM @ .1 SP	SONES @ .1 SP	HEATING ELEMENT	LIGHTING	LIGHT LENS	LISTING	DUCT SIZE	HOUSING SIZE
<b>COMBINATION CERAMIC HEATER</b>								
AK55L	70	5.0	1,350W Ceramic	A19 or Medium Base CFL	Glass	UL	4"	14½"W x 8¾"D x 6½"H
<b>DELUXE COMBINATION HEATER</b>								
AK965L	70	3.5	1,500W NiChrome Wire	A19 or Medium Base CFL	Glass	UL	4"	14½"W x 8¾"D x 6½"H
<b>COMBINATION HEATER</b>								
AK964	70	3.5	1,500W NiChrome Wire	A19 or Medium Base CFL	Glass	UL	4"	14½"W x 8¾"D x 6½"H
<b>BULB HEATER</b>								
AK917	70	3.5	250W Bulb	250W Heat Bulb	-	UL	4"	8"W x 8"D x 5⅝"H
AK927	70	3.5	2-250W Bulbs	2-250W Heat Bulbs	-	UL	4"	8"W x 13⅞"D x 5⅝"H



# Fire Rated Exhaust Fans



FRAK Series

## UL263/UL555C

**CLASSIFIED CLASSIFIED**  
for Wood Frame Construction

### Not all Fans are Created Equal

Life Safety Professionals work hard to develop and enforce building codes to eliminate or reduce potential threats. Nothing can be more frustrating and sometimes more costly than not having the correct product to comply with the building code for your project.

### Wood is a Combustible Material

When you're building a multi-family residential project using wood frame construction you'll need to comply with stringent requirements to prevent the spread of fire. These are likely to include the use of fire rated products for ceiling penetrations such as bathroom exhaust fans. Air King Fire Rated Fans have been tested and are UL Listed for use in wood frame construction and have been successfully tested by UL in more designs than any major manufacturer.

You will see competitor certifications that will say "For use in any fire resistive floor or roof-ceiling assembly". That doesn't necessarily mean UL listed for wood frame construction. Wood construction is NOT fire resistive; wood is a combustible material that fire fighters usually consider fuel. The UL requirement for listing in this case requires mounting and testing of the fan in each approved design above an actual fire. You know you have the right product for the application when the manufacturer provides the design numbers for which the product was tested. No design number - Not UL Listed for wood frame construction.

Air King Fire Rated Fans, on the other hand, are UL Listed for the greatest number of wood frame designs at the time of this printing. Be sure you have the right product and save yourself a lot of time and trouble by starting with Air King.



FRAS Series

### Fire Rated Series

- Three part system that includes a housing, motor/blade/grill and damper
- Available in single packs or in contractor packs of 4
- Low profile and durable, all metal grill with a painted, white finish
- Easily installs using the included adjustable hanging brackets
- UL Listed as fan/damper assembly for the following Wood Frame Construction designs:

L501 L502 L503 L506 L507 L508 L512 L513 L514 L515  
L516 L517 L519 L522 L523 L533 L537 L545 L581 L583



MODEL	CFM @ .1 SP	SONES @ .1 SP	ASHRAE 62.2	CONTRACTOR PACK (MOTOR/HOUSING/DAMPER)	LISTING	DUCT SIZE	HOUSING SIZE
<b>FRAS SERIES FIRE RATED EXHAUST FANS</b>							
FRAS50	50	3.0	-	FA50T / AKFH1 / AKFD1	UL	3"	7¾"W x 7¾"D x 5⅞"H
FRAS70	70	5.0	-	FA70T / AKFH1 / AKFD1	UL	3"	7¾"W x 7¾"D x 5⅞"H
<b>FRAK SERIES FIRE RATED EXHAUST FANS</b>							
FRAK110	110	2.0	Local	FAK110T / AKFH2 / AKFD2	UL	4"	10⅞"W x 9⅞"D x 7⅞"H
FRAK130	130	2.5	Local	FAK130T / AKFH2 / AKFD2	UL	4"	10⅞"W x 9⅞"D x 7⅞"H

# Quiet Fire Rated Exhaust Fans



CALGreen



FRAK Series

## ENERGY STAR® Certified Fire Rated Series

- **ENERGY STAR® version 4.0 Certified**
- Solutions for **ASHRAE 62.2** continuous whole house ventilation or local ventilation (models with a sone rating of 1.0 or below can be used for whole house ventilation)
- Can be used to comply with California Title 24 as well as CALGreen (humidity sensing models meet the CALGreen requirements for use in bathrooms)
- Three part system that includes a housing, motor/blade/grill and damper
- 4" Round spring loaded metal damper protects against backdrafts
- Available in single packs or in contractor packs of 4
- Low profile and durable, all metal grill with a painted, white finish
- Easily installs using the included adjustable hanging brackets
- UL Listed as fan/damper assembly for the following Wood Frame Construction designs:

L501 L502 L503 L506 L507 L508 L512 L513 L514 L515  
L516 L517 L519 L522 L523 L533 L537 L545 L581 L583

MODEL	CFM @ .1 SP	CFM @ .25 SP	SONES @ .1 SP	MAX. FAN WATTS	CONTRACTOR PACK (MOTOR/HOUSING/DAMPER)	LISTING	DUCT SIZE	HOUSING SIZE
<b>FIRE RATED EXHAUST FANS</b>								
FRAK50S	50	39	0.6	16.0	FAK80T / AKFH2 / AKFD2	UL	4"	10¾"W x 9¼"D x 7⅞"H
FRAK80	80	68	1.0	28.1	FAK80T / AKFH2 / AKFD2	UL	4"	10¾"W x 9¼"D x 7⅞"H
FRAK90	90	73	1.5	24.2	FAK90T / AKFH2 / AKFD2	UL	4"	10¾"W x 9¼"D x 7⅞"H
FRAK100	100	82	2.0	25.5	FAK100T / AKFH2 / AKFD2	UL	4"	10¾"W x 9¼"D x 7⅞"H
FRAK100D	100 / 50	82	2.0 / 0.8	25.5	N/A	UL	4"	10¾"W x 9¼"D x 7⅞"H
<b>FIRE RATED EXHAUST FANS with HUMIDITY SENSOR</b>								
Integrated humidistat senses the humidity level of the room and turns the fan on (or to high speed for dual speed models) until the humidity level is below the preset level. Can be set up to 80% RH. The fan can also be activated through a wall control switch.								
FRAK80H	80	68	1.0	28.1	FAK80T / AKFH2H / AKFD2	UL	4"	10¾"W x 9¼"D x 7⅞"H
FRAK90H	90	73	1.5	24.2	FAK80T / AKFH2H / AKFD2	UL	4"	10¾"W x 9¼"D x 7⅞"H
FRAK100H	100	82	2.0	25.5	FAK80T / AKFH2H / AKFD2	UL	4"	10¾"W x 9¼"D x 7⅞"H



# Switches and Timers

## ON/OFF SWITCHES

**Model AKS2:** White rocker style switch that allows the user independent on/off control of 2 functions such as fan and light.

**Model AKS3:** White rocker style switch that allows the user independent on/off control of 3 functions such as fan, light and night light.

**Model AKS4:** White rocker style switch that allows the user independent on/off control of 4 functions such as fan, light, night light, and additional room light.

## TIMER SWITCHES

**Model AKPT62:** White, 24 hour - 7 day programmable switch with 7 On and 7 Off events per day and single push button controls. One touch push button override and LCD display screen. Includes rechargeable battery that provides up to 30 days of battery backup. **Rated for Fluorescent lights, Motors up to 1 HP, 15A Resistive/Tungsten.** Ideal for ASHRAE 62.2 installations and exhaust fans used to comply with the California Title 24 requirements.

**Model AKEDT2:** White or Almond color (both color options included with the switch) electronic delay timer that turns the fan and light on simultaneously while offering an electronic, automatic delay timer that allows the user to turn the light off while the fan continues to operate for an additional 20, 40, or 60 minutes before automatically turning off. The duration of operation time for the fan can easily be adjusted with the touch of the electronic button. **Rated for Fluorescent lights.**

**Model AKDT60W:** White, delay timer that turns the fan and light on simultaneously while offering an automatic delay timer that allows the user to turn the light off while the fan continues to operate for an additional preset time before automatically turning off. The duration of operation time for the fan can be adjusted from 1 to 60 minutes. Also available in Ivory color - Model **AKDT60I.**

**Model AKDT63W:** White, delay timer that turns the fan and light on simultaneously while offering an automatic delay timer that allows the user to turn the light off while the fan continues to operate for an additional preset time before automatically turning off. The duration of operation time for the fan can be adjusted from 1 to 60 minutes. Switch features a center Off position that allows the user to turn all functions off when selected. Also available in Ivory color - Model **AKDT63I.**

**Models AKT120, AKT8H:** White or Almond color (both color options included with the switch) timer that allows the user to electronically set the time up to 120 minutes (AKT120) in 15 minute increments or 8 hours (AKT8H) in 1 hour increments using the touch pad controls.

**Models AKT60, AKT15:** White or Almond color (both color options included with the switch) timer that allows the user to set the time up to 60 minutes (AKT60) or 15 minutes (AKT15).

## SENSOR CONTROLS

**Model AKOSW:** White, occupancy sensor automatically turns the fan on when the room is occupied and continues to run for up to 30 minutes after the room is vacated. **Rated for Fluorescent lights** and the wall plate is included. Also available in Ivory color - Model **AKOSI.**

**Model AKVSW:** White, vacancy sensor is manually turned on with the push button power switch then automatically turns the fan off after 30 minutes once the room is no longer occupied. **Rated for Fluorescent lights** and the wall plate is included. **California Title 24 compliant.** Also available in Ivory color - Model **AKVSI.**

## SPECIALTY CONTROLS

**Model AKPAT3:** White, 24 hour - 20 available ON/OFF position programmable switch. 3-way capable with manual push-button for temporary or continuous override of automatic programming. LCD display screen. **Rated for Fluorescent lights, Motors up to 1/2 HP, 15A Resistive/Tungsten.** Ideal for ASHRAE 62.2 installations and exhaust fans used to comply with the California Title 24 requirements.

**Model DH55:** White, dehumidistat automatically turns the unit on/off according to the humidity level of the room and is easily adjusted to maximize the system.

**Model AKT724H:** White, electromechanical switch features an AM/PM dial format, capable of up to 36 on/off cycles per 24 hours with a manual OFF-ON-AUTO setting. Fits standard electrical boxes and includes a white wall plate.

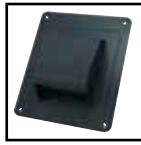
**Model SC25:** Rotary type variable speed controller for manual adjustment of fan's CFM performance. For use with inline fans and any other fans that are rated for variable speed control. Rated for up to 2.5 amp load. Fits standard electrical boxes and includes a metal wall plate.



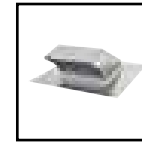
## ROOF CAPS



**RCB810:** Includes plastic 4" round roof cap, 8' of 4" round flexible ducting, 3" to 4" adapter and 2 zip ties



**RCB:** ABS Plastic roof cap with damper and bird screen. Accepts up to 4" round ducting

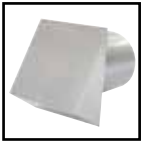


Roof caps with bird screens and dampers  
**PRC10R:** Galvanized steel, accepts 10" round ducting  
**PRC8R:** Galvanized steel, accepts 8" round ducting  
**PRC6R:** Galvanized steel, accepts 6" round ducting

## WALL CAPS



Aluminum wall caps with dampers  
**WC3NS:** 3" round ducting  
**WC4NS:** 4" round ducting



Wall caps with dampers  
**PWC10R:** Galvanized steel, accepts 10" round ducting  
**PWC8R:** Galvanized steel, accepts 8" round ducting  
**PWC6R:** Galvanized steel, accepts 6" round ducting

## LIGHT FIXTURES



**26SBL:** GU24 26 watt high efficacy self ballasted fluorescent lamp  
**18SBL:** GU24 18 watt high efficacy self ballasted fluorescent lamp



**26WFB:** 26 watt, high efficacy compact fluorescent 4 pin triple tube lamp



**AK8LED40:** GU24 8 watt LED lamp, 4000K  
**AK6LED40:** GU24 6 watt LED lamp, 4000K

## DUCTING ACCESSORIES



Metal back draft dampers  
**BDD4R:** 4" round ducting  
**BDD6R:** 6" round ducting  
**BDD8R:** 8" round ducting  
**BDD10R:** 10" round ducting  
**BDD12R:** 12" round ducting



**AK46R:** Galvanized steel 4" round to 6" round duct transition  
**AK34R:** Galvanized steel 3" round to 4" round duct transition



**OA10V:** Galvanized steel 4 1/2" x 18 1/2" to 10" round duct transition

## CONTRACTOR PACKS

HOUSINGS	MOTOR/BLADE/GRILL	#PER PACK	CFM/SONES	DUCT SIZE	SINGLE PACK MODEL #	SINGLE PACK PAGE
<b>ENERGY STAR® CERTIFIED HUMIDITY SENSING SERIES</b>						
AK-1HA	AK80LS1T	4	80/1.0	4" plastic	AK80H	7
	AK110PNT	4	100/1.5	4" plastic	AK100H	7
<b>ENERGY STAR CERTIFIED SERIES</b>						
AK-2A6	AK80LS6T	4	80/0.5	6" plastic	AK80LS6	7
	AK90LS6T	4	90/0.8	6" plastic	AK90LS6	7
	AK100LS6T	4	100/1.0	6" plastic	AK100LS6	7
	AK110LS6T	4	110/1.4	6" plastic	AK110LS6	7
AK-1HSG	AK80LS1T	4	80/1.0	4" plastic	AK80LS-1	7
	AK80MBG	4	80/1.5	4" plastic	AK80	7
	AK90MBG	4	90/1.5	4" plastic	AK90	7
	AK110PNT	4	100/1.5	4" plastic	AK110PN	7
BFQHSG	BFQ50T	4	50/0.5	4" plastic	BFQ50	8
	BFQ75T	4	70/1.5	4" plastic	BFQ75	8
	BFQ80T	4	80/2.0	4" plastic	BFQ80	8
BFQ2HSG	BFQ50T	4	50/0.5	4" plastic	BFQ50W	8
	BFQ75T	4	70/1.5	4" plastic	BFQ75W	8
<b>ENERGY STAR CERTIFIED HUMIDITY SENSING SERIES with LIGHT</b>						
AK-3HA	AKF80T	4	80/1.0	4" plastic	AKF80H	7
	AKF100T	4	100/1.5	4" plastic	AKF100H	7
<b>ENERGY STAR CERTIFIED SERIES with LIGHT</b>						
AK-3HSG	AKF50T	4	50/0.5	4" plastic	AKF50	7
	AKF80T	4	80/1.0	4" plastic	AKF80LS	7
	AKF100T	4	100/1.5	4" plastic	AKF100	7
BFQFHSG	BFQF50T	4	50/0.5	4" plastic	BFQF50	8
	BFQF70T	4	70/1.5	4" plastic	BFQF70	8

HOUSINGS	MOTOR/BLADE/GRILL	#PER PACK	CFM/SONES	DUCT SIZE	SINGLE PACK MODEL #	SINGLE PACK PAGE
<b>SNAP-IN SERIES</b>						
BFQHSG	BFQ90MBG	4	90/2.5	4" plastic	BFQ90	11
	BFQ110MBG	4	100/3.5	4" plastic	BFQ110	11
	BFQ140MBG	4	120/4.0	4" plastic	BFQ140	11
BFQ2HSG	BFQ80T	4	80/2.0	4" plastic	BFQ80W	11
<b>ADVANTAGE SERIES</b>						
ASHSG	AS50MBG	6	50/3.0	3" plastic	AS50	11
	AS70MBG	6	70/4.0	3" plastic	AS70	11
AWCHSG <sup>4</sup>	AS50MBG	6	50/3.0	3" plastic	N/A	11
	AS70MBG	6	70/4.0	3" plastic	N/A	11
ASMTLHSG	AS50MBG	6	50/3.0	3" metal	N/A	11
	AS70MBG	6	70/4.0	3" metal	N/A	11
ATL18HSG <sup>5</sup>	AS50MBG	18 / 6	50/3.0	4" plastic	N/A	11
	AS70MBG	18 / 6	70/4.0	4" plastic	N/A	11
<b>ADVANTAGE SERIES with LIGHT</b>						
ASLCHSG	ASLC50MBG	4	50/3.0	4" plastic	ASLC50	9
	ASLC70MBG	4	70/4.0	4" plastic	ASLC70	9
<b>COMBINATION CERAMIC HEATERS</b>						
AK55LHSG	AK55LT	1	70/5.0	4" metal	AK55L	13
<b>FIRE RATED SERIES</b>						

See pages 14 and 15 for contractor pack configurations

<sup>4</sup> Wago® Quick Connect Housing, includes Wago® Wall Nuts™ for wiring connection  
<sup>5</sup> ATL18HSG sold in packs of 18, model AS54 utilizes ATL18HSG and AS50MBG



# Specifications

MODEL	CFM	SONES	SOUND LEVEL	LIGHTING	ENERGY STAR	CALGREEN	ASHRAE 62.2	LISTING	DUCT SIZE	HOUSING SIZE	PAGE
AK100D	100/50	2.0 / 0.4	Very Quiet	N/A	YES	Other Rooms	Whole Building/Local	UL	4"	10 1/2"W x 9 3/4"D x 7 7/8"H	7
AK80H	80	1.0	Very Quiet	N/A	YES	Bathrooms	Whole Building/Local	ETL	4"	10 1/2"W x 9 3/4"D x 7 7/8"H	7
AK100H	100	2.0	Quiet	N/A	YES	Bathrooms	Local	ETL	4"	10 1/2"W x 9 3/4"D x 7 7/8"H	7
AK80LS6H	80	0.5	Very Quiet	N/A	YES	Bathrooms	Whole Building/Local	UL	6"	10 1/2"W x 9 3/4"D x 7 7/8"H	7
AK100LS6H	100	1.0	Very Quiet	N/A	YES	Bathrooms	Whole Building/Local	ETL	6"	10 1/2"W x 9 3/4"D x 7 7/8"H	7
AKF50	50	0.3	Very Quiet	Fluorescent	YES	Other Rooms	Whole Building/Local	UL	4"	10 1/2"W x 9 3/4"D x 7 7/8"H	7
AKF80LS	80	1.0	Very Quiet	Fluorescent	YES	Other Rooms	Whole Building/Local	UL	4"	10 1/2"W x 9 3/4"D x 7 7/8"H	7
LEDAK80	80	1.0	Very Quiet	LED	YES	Other Rooms	Whole Building/Local	UL	4"	10 1/2"W x 9 3/4"D x 7 7/8"H	7
AKF100	100	2.0	Quiet	Fluorescent	YES	Other Rooms	Local	UL	4"	10 1/2"W x 9 3/4"D x 7 7/8"H	7
LEDAK100	100	2.0	Quiet	LED	YES	Other Rooms	Local	UL	4"	10 1/2"W x 9 3/4"D x 7 7/8"H	7
AKF100D4	100/50	2.0 / 0.4	Very Quiet	Fluorescent	YES	Other Rooms	Whole Building/Local	UL	4"	10 1/2"W x 9 3/4"D x 7 7/8"H	7
LEDAK100D	100/50	2.0 / 0.4	Very Quiet	LED	YES	Other Rooms	Whole Building/Local	UL	4"	10 1/2"W x 9 3/4"D x 7 7/8"H	7
AKF80H	80	1.0	Very Quiet	Fluorescent	YES	Bathrooms	Whole Building/Local	ETL	4"	10 1/2"W x 9 3/4"D x 7 7/8"H	7
LEDAK80H	80	1.0	Very Quiet	LED	YES	Bathrooms	Whole Building/Local	ETL	4"	10 1/2"W x 9 3/4"D x 7 7/8"H	7
AKF100H	100	2.0	Quiet	Fluorescent	YES	Bathrooms	Local	ETL	4"	10 1/2"W x 9 3/4"D x 7 7/8"H	7
LEDAK100H	100	2.0	Quiet	LED	YES	Bathrooms	Local	ETL	4"	10 1/2"W x 9 3/4"D x 7 7/8"H	7
BFQ50	50	0.6	Very Quiet	N/A	YES	Other Rooms	Whole Building/Local	UL	4"	9 1/2"W x 8 1/2"D x 4 3/4"H	8
BFQ75	70	1.5	Quiet	N/A	YES	Other Rooms	Local	UL	4"	9 1/2"W x 8 1/2"D x 4 3/4"H	8
BFQ50W	50	0.8	Very Quiet	N/A	YES	Other Rooms	Whole Building/Local	UL	4"	9 1/2"W x 8 1/2"D x 3 3/4"H	8
BFQ70W	70	1.5	Quiet	N/A	YES	Other Rooms	Local	UL	4"	9 1/2"W x 8 1/2"D x 3 3/4"H	8
BFQ50	50	0.8	Very Quiet	Fluorescent	YES	Other Rooms	Whole Building/Local	UL	4"	9 1/2"W x 8 1/2"D x 3 3/4"H	8
BFQF70	70	2.0	Quiet	Fluorescent	YES	Other Rooms	Local	UL	4"	9 1/2"W x 8 1/2"D x 5 3/4"H	8
AK100L	100	2.5	Quiet	Incandescent	NO	NO	Local	UL	4"	9 1/2"W x 10 1/2"D x 7 7/8"H	9
AK863L	100	3.5	Moderate	Incandescent	NO	NO	NO	UL	4"	9 1/2"W x 9 1/4"D x 5 1/2"H	9
AK864L	100	3.5	Moderate	Incandescent	NO	NO	NO	UL	4"	9 1/2"W x 9 1/4"D x 5 1/2"H	9
ASLC50	50	3.0	Quiet	Incandescent	NO	NO	Local	UL	4"	7 3/4"W x 7 3/4"D x 5 1/2"H	9
ASLC70	70	4.0	Moderate	Incandescent	NO	NO	NO	UL	4"	7 3/4"W x 7 3/4"D x 5 1/2"H	9
ASLC90	90	2.5	Quiet	Incandescent	NO	NO	Local	UL	4"	9 1/2"W x 9 1/4"D x 5 1/2"H	9
ASLC120	120	4.0	Moderate	Incandescent	NO	NO	NO	UL	4"	9 1/2"W x 9 1/4"D x 5 1/2"H	9
AKLC701	70	2.5	Quiet	Incandescent	NO	NO	Local	UL	4"	7 3/4"W x 7 3/4"D x 5 1/2"H	10
AKLC702	70	2.5	Quiet	Incandescent	NO	NO	Local	UL	4"	7 3/4"W x 7 3/4"D x 5 1/2"H	10
AKLC703	70	2.5	Quiet	Incandescent	NO	NO	Local	UL	4"	7 3/4"W x 7 3/4"D x 5 1/2"H	10
AKLC70SLN	70	2.5	Quiet	Incandescent	NO	NO	Local	UL	4"	7 3/4"W x 7 3/4"D x 5 1/2"H	10
AKLC70SLW	70	2.5	Quiet	Incandescent	NO	NO	Local	UL	4"	7 3/4"W x 7 3/4"D x 5 1/2"H	10
AKLC70DW	70	2.5	Quiet	Incandescent	NO	NO	Local	UL	4"	7 3/4"W x 7 3/4"D x 5 1/2"H	10
AKLC70RCB	70	2.5	Quiet	Incandescent	NO	NO	Local	UL	4"	7 3/4"W x 7 3/4"D x 5 1/2"H	10
AKLC70RSB	70	2.5	Quiet	Incandescent	NO	NO	Local	UL	4"	7 3/4"W x 7 3/4"D x 5 1/2"H	10
AKLC70SNS	70	2.5	Quiet	Incandescent	NO	NO	Local	UL	4"	7 3/4"W x 7 3/4"D x 5 1/2"H	10
DRLC701	70	4.0	Moderate	Incandescent	NO	NO	NO	UL	4"	7 3/4"W x 7 3/4"D x 5 1/2"H	10
DRLC702	70	4.0	Moderate	Incandescent	NO	NO	NO	UL	4"	7 3/4"W x 7 3/4"D x 5 1/2"H	10
DRLC703	70	4.0	Moderate	Incandescent	NO	NO	NO	UL	4"	7 3/4"W x 7 3/4"D x 5 1/2"H	10
BFQ80	80	2.0	Quiet	N/A	NO	NO	Local	UL	4"	9 1/2"W x 8 1/2"D x 4 3/4"H	11
BFQ90	90	2.5	Quiet	N/A	NO	NO	Local	UL	4"	9 1/2"W x 8 1/2"D x 4 3/4"H	11
BFQ110	100	3.5	Moderate	N/A	NO	NO	NO	UL	4"	9 1/2"W x 8 1/2"D x 4 3/4"H	11
BFQ140	120	4.0	Moderate	N/A	NO	NO	NO	UL	4"	9 1/2"W x 8 1/2"D x 4 3/4"H	11
AS54	50	3.0	Quiet	N/A	NO	NO	Local	UL	4"	7 1/4"W x 7 1/4"D x 3 3/4"H	11
AS50	50	3.0	Quiet	N/A	NO	NO	NO	UL	3"	7 1/4"W x 7 1/4"D x 3 3/4"H	11
AS70	70	4.0	High	N/A	NO	NO	NO	UL	3"	7 1/4"W x 7 1/4"D x 3 3/4"H	11
EFW-180	180	6.5	High	N/A	NO	NO	NO	UL	8"	14 1/4"W x 4 5/8"-9 1/2"D x 14 1/4"H	11
AK400	420	1.5	Quiet	N/A	NO	NO	Local	ETL	4 1/2x18 1/2"	23 1/2"W x 12 3/4"D x 12 3/4"H	12
AK500	520	2.5	Quiet	N/A	NO	NO	Local	ETL	4 1/2x18 1/2"	23 1/2"W x 12 3/4"D x 12 3/4"H	12
AK600	620	3.5	Moderate	N/A	NO	NO	NO	ETL	4 1/2x18 1/2"	23 1/2"W x 12 3/4"D x 12 3/4"H	12
AK55L	70	5.0	High	Incandescent	NO	NO	NO	UL	4"	14 1/2"W x 8 3/4"D x 6 1/2"H	13
AK965L	70	3.5	Moderate	Incandescent	NO	NO	NO	UL	4"	14 1/2"W x 8 3/4"D x 6 1/2"H	13
AK964	70	3.5	Moderate	Incandescent	NO	NO	NO	UL	4"	14 1/2"W x 8 3/4"D x 6 1/2"H	13
AK917	70	3.5	Moderate	Heat Lamp	NO	NO	NO	UL	4"	8"W x 8"D x 5 1/2"H	13
AK927	70	3.5	Moderate	Heat Lamp	NO	NO	NO	UL	4"	8"W x 13 1/8"D x 5 1/2"H	13
FRAS50	50	3.0	Quiet	N/A	NO	NO	NO	UL	3"	7 3/4"W x 7 3/4"D x 5 1/2"H	14
FRAS70	70	5.0	High	N/A	NO	NO	NO	UL	3"	7 3/4"W x 7 3/4"D x 5 1/2"H	14
FRAK110	110	2.0	Quiet	N/A	NO	NO	Local	UL	4"	10 1/2"W x 9 3/4"D x 7 7/8"H	14
FRAK130	130	2.5	Quiet	N/A	NO	NO	Local	UL	4"	10 1/2"W x 9 3/4"D x 7 7/8"H	14
FRAK50S	50	0.6	Very Quiet	N/A	YES	Other Rooms	Whole Building/Local	UL	4"	10 3/4"W x 9 1/4"D x 7 7/8"H	15
FRAK80	80	1.0	Very Quiet	N/A	YES	Other Rooms	Whole Building/Local	UL	4"	10 3/4"W x 9 1/4"D x 7 7/8"H	15
FRAK90	90	1.5	Quiet	N/A	YES	Other Rooms	Local	UL	4"	10 3/4"W x 9 1/4"D x 7 7/8"H	15
FRAK100	100	2.0	Quiet	N/A	YES	Other Rooms	Local	UL	4"	10 3/4"W x 9 1/4"D x 7 7/8"H	15
FRAK100D	100/50	2.0 / 0.8	Very Quiet	N/A	YES	Other Rooms	Whole Building/Local	UL	4"	10 3/4"W x 9 1/4"D x 7 7/8"H	15
FRAK80H	80	1.0	Very Quiet	N/A	YES	Bathrooms	Whole Building/Local	UL	4"	10 3/4"W x 9 1/4"D x 7 7/8"H	15
FRAK90H	90	1.5	Quiet	N/A	YES	Bathrooms	Local	UL	4"	10 3/4"W x 9 1/4"D x 7 7/8"H	15
FRAK100H	100	2.0	Quiet	N/A	YES	Bathrooms	Local	UL	4"	10 3/4"W x 9 1/4"D x 7 7/8"H	15

Whole Building/Local refers to sound ratings for ventilation fans under ASHRAE 62.2. This standard requires continuously and intermittently operated fans to be rated 1 sone or less.



# TOTAL HOME VENTILATION



Exhaust Fans & Range Hoods Featured In

## The **ABC** Green Home™ 3.0

AFFORDABLE • BUILDABLE • CERTIFIED



West Chester, PA 19380 • Phone 877-304-3785  
www.airkinglimited.com



Printed using low VOC inks on a composite of post consumer fiber, recycled paper and virgin pulp derived from sustainably managed forests.